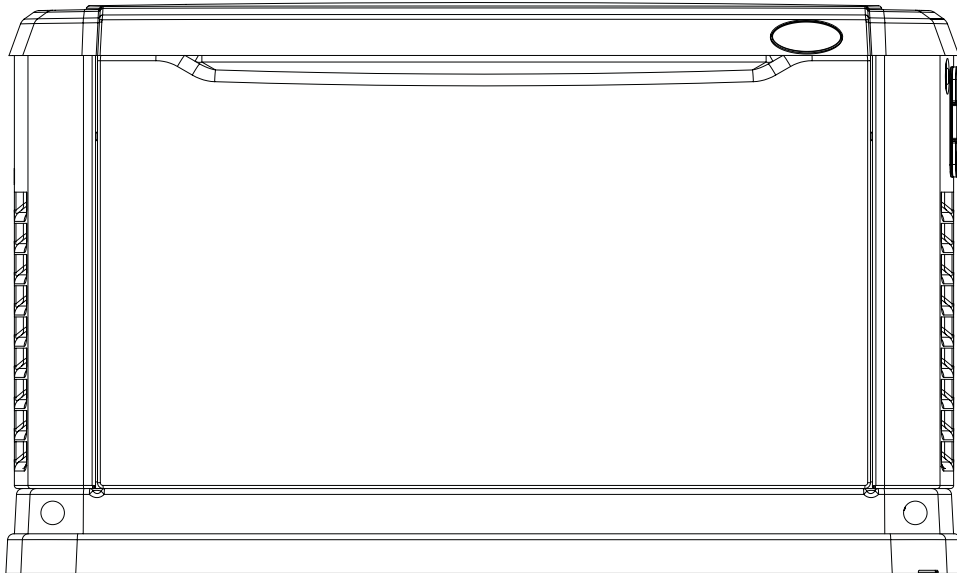


Owner's Manual

8, 10, 12, 14, 16, 17 & 20kW Air-cooled, Automatic Standby Generators



DO NOT LIFT UNIT BY ROOF!

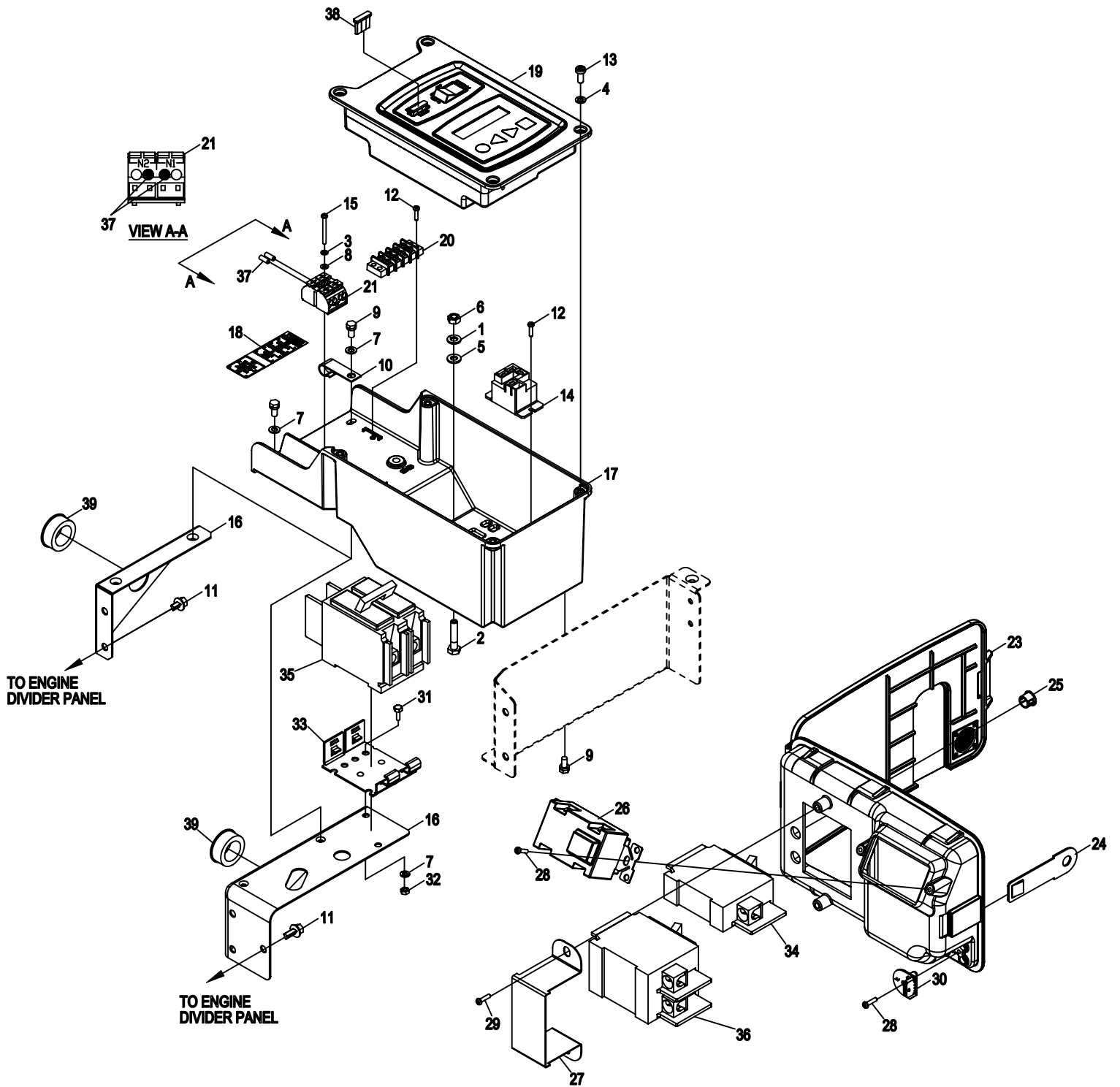


Not intended for use as Primary Power in place of utility
or in life-support applications.



—  **DANGER**  —

DEADLY EXHAUST FUMES. OUTDOOR INSTALLATION ONLY!



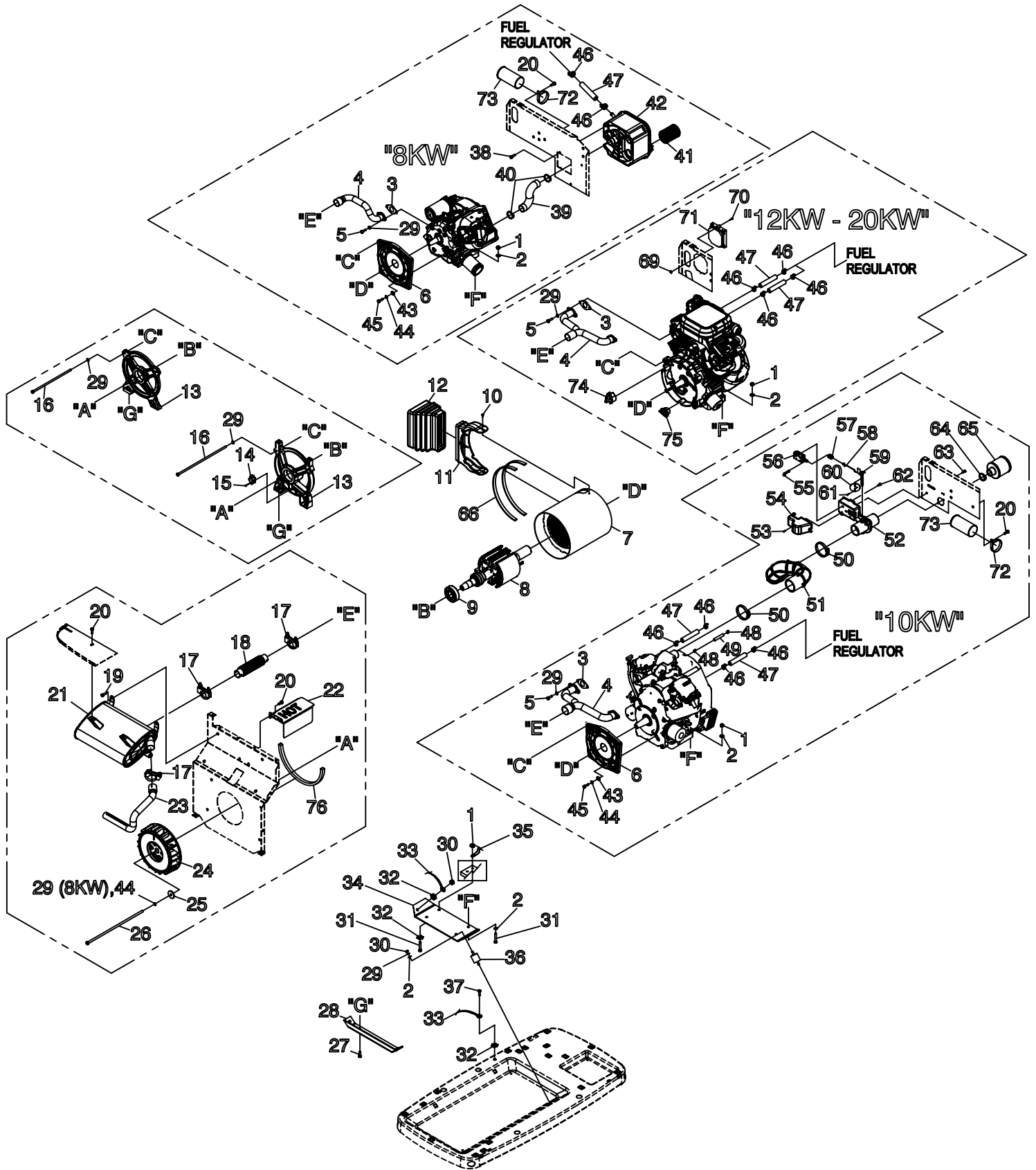
EXPLODED VIEW:
 CONTROL PANEL
 DRAWING #: 0G7538

EXPLODED VIEW: CONTROL PANEL

DRAWING #: 0G7538

APPLICABLE TO: 2008 HSB

ITEM	PART #	QTY.	DESCRIPTION
1	022097	3	WASHER LOCK M6-1/4
2	0G6131	3	SCREW HHC M6-1.0 X 30 C8.8
3	043182	1	WASHER LOCK M3
4	049226	4	WASHER LOCK M5
5	049811	3	WASHER FLAT M6
6	049813	3	NUT HEX M6 X 1.0 G8 YEL CHR
7	051713	4	WASHER FLAT M5 (8kw)
	051713	2	WASHER FLAT M5 (10kw, 14kw, 17kw, & 20kw)
8	052777	1	WASHER FLAT M3
9	066482	4	SCREW HHC M5-0.8 X 10 SEMS
10	082121C	1	CLIP-J VINYL COAT .625 ID (10kw, 14kw, 17kw, & 20kw)
11	090388	3	SCREW HHTT M6-1.0 X 12 ZINC (8kw)
	090388	2	SCREW HHTT M6-1.0 X 12 ZINC (10kw)
	0C1069	2	SCREW HHTT M6-1.0 X 8 ZINC (14kw, 17kw, & 20kw)
12	0G9002	2	SCREW PPHM M3-0.5 X 12 SEMS (8kw)
	0G9002	4	SCREW PPHM M3-0.5 X 12 SEMS (10kw, 14kw, 17kw, & 20kw)
13	091526	4	SCREW PPHM M5-0.8 X 12 ZNC
14	0C2174	1	RELAY 12V 25A SPST (10kw, 14kw, 17kw, & 20kw)
15	0E3969	1	SCREW PPHM M3-0.5 X 30
16	0G7820	1	BRKT CTRL PNL BACK 8KW
	0G7652	1	BRKT CTRL PNL BACK 10/14/17/20KW
17	0G7801	1	BASE CONTROL BOX 2008 HSB
18	0G7802	1	DECAL CUSTOMER CONN HSB
19	0G7901	1	ASSY CTRL PNL 2008 AC HSB (8kw)
	0G7806	1	ASSY CTRL PANEL 2008 AC HSB (10kw, 14kw, 17kw, & 20kw)
20	0G7871	1	BLOCK TERM 4POS 15A
21	0D7393R	1	TERM BLOCK 2P UL 12-20AWG
22	0G7837	1	HARNES, C/PNL 08 S-CYL HSB (NOT SHOWN) (8kw)
	0G7835	1	HARNES, C/PNL 08 VT HSB (NOT SHOWN) (10, 14, 17, & 20kw)
23	0G7464	1	ASSY CONTROL BOX (17kw, & 20kw)
	0G7464A	1	ASSY CONTROL BOX (10kw, & 14kw)
24	0G7445	1	EYE HASP CNTRL PANEL (10kw, 14kw, 17kw, & 20kw)
25	0G7819	2	PLUG PLASTIC DOME 7/16" (10kw, 14kw, 17kw, & 20kw)
26	0E4261	1	OUTLET, 15A GFCI DUPLEX WHITE (17kw, & 20kw)
27	0G7537	1	CB BRACKET CONTROL BOX (10kw, 14kw, 17kw, & 20kw)
28	0G7621	3	SCREW HH HI-LO M4 X 10MM (17kw, & 20kw)
	0G7621	1	SCREW HH HI-LO M4 X 10MM (10kw, & 14kw)
29	0G7717	2	SCREW REDUCED HH HI-LO M6X10MM (10kw, 14kw, 17kw, & 20kw)
30	0G7714	1	ASSY PCB TRIP LED DISPLAY (17kw, & 20kw)
	0G7714A	1	ASSY, DUAL LED DISPLAY (10kw, & 14kw)
31	045770	2	SCREW HHC M5-0.8 X 10 C8.8 (8kw)
32	082025	2	NUT HEX LOCK M5-0.8 NYINS ZINC (8kw)
33	0E7890	1	BRKT CB MTG BACK (8kw)
34	0G7568	1	CB 0015A 1P 120V S BQ1 LB (17kw, & 20kw)
35	0E7886B	1	CB 0035A 2P 240V S BQ2 LB (8kw)
36	0E7886D	1	CB 0045A 2P 240V S BQ2 LB (10kw)
	0E7886F	1	CB 0060A 2P 240V S BQ2 LB (14kw)
	0E7886J	1	CB 0065A 2P 240V S BQ2 LB (17kw)
	0E7886H	1	CB 0100A 2P 240V S BQ2 LB (20kw)
37	0D7393S	2	CAP LOCKOUT
38	0D7178T	REF	FUSE, ATO TYPE 7.5AMP (BROWN)
39	023484F	1	SNAP BUSHING



EXPLODED VIEW: POWER HEAD

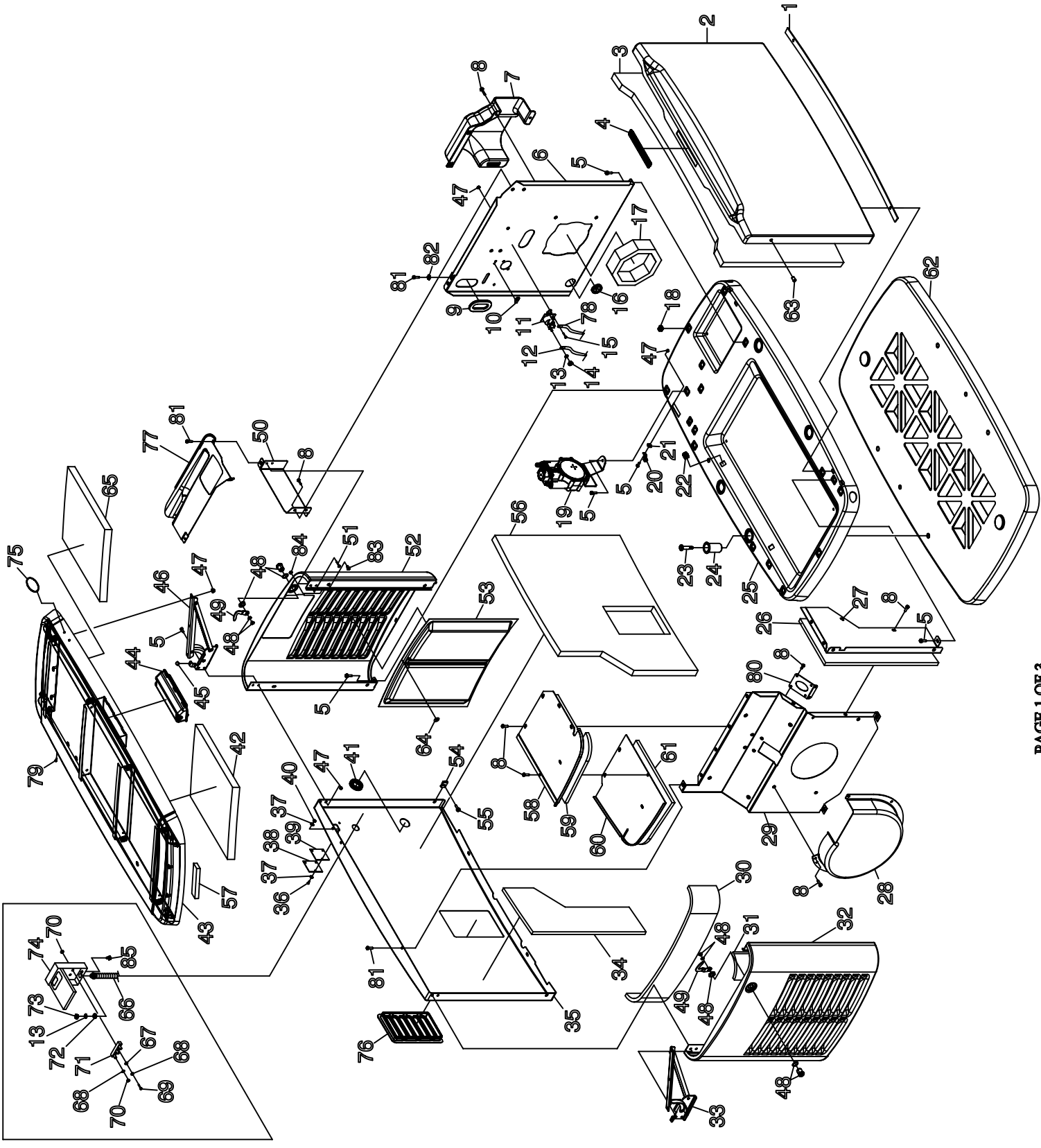
DRAWING #: 0G7746

APPLICABLE TO: 2008 HSB

ITEM	PART #	QTY.	DESCRIPTION
1	049820	4	NUT LOCK HEX M8-1.25 NYLON INSERT
2	022145	9	WASHER FLAT M8-5/16
3	090239	1	GASKET, EXHAUST (8KW)
	0E9369	2	GASKET, EXHAUST (10KW)
	0C4138	2	GASKET, EXHAUST
4	0G7236	1	MANIFOLD, EXHAUST (8KW)
	0F8115	1	MANIFOLD, EXHAUST (10KW)
	0F7799	1	MANIFOLD, EXHAUST
5	040976	2	SCREW SHC M8-1.25 X 20 (8KW)
	040976	4	SCREW SHC M8-1.25 X 20
6	0G7080	1	ENGINE ADAPTOR CASTING (8KW & 10KW)
7	0G7030C	1	STATOR (8KW)
	0G7031C	1	STATOR (10KW)
	0G7324C	1	STATOR (12KW & 14KW)
	0G7325C	1	STATOR (16KW & 17KW)
	0G7326C	1	STATOR (20KW)
8	0G7035C	1	ROTOR (8KW)
	0G7036C	1	ROTOR (10KW)
	0G7321C	1	ROTOR (12KW & 14KW)
	0G7322C	1	ROTOR (16KW & 17KW)
	0G7323C	1	ROTOR (20KW)
9	056482	1	BEARING
10	045756	2	SCREW HHTT M6-1.0 X 10
11	0G7255	1	ALTERNATOR AIR IN DUCT (8KW & 10KW)
	0G7256	1	ALTERNATOR AIR IN DUCT
12	0G7257	1	ALTERNATOR AIR IN BELLOWS
13	0G7081	1	BEARING CARRIER (8KW & 10KW)
	0F7774	1	BEARING CARRIER
14	066386	1	ASSEMBLY BRUSH HOLDER
15	066849	2	SCREW HHTT M5-0.8 X 16 (12KW - 20KW)
16	0G7360	4	BOLT, IHCS M8-1.25 X 300 (8KW & 10KW)
	0D1846	4	BOLT, IHCS M8-1.25 X 345 (12KW - 17KW)
	0D3549	4	BOLT, IHCS M8-1.25 X 400
17	0D5823	3	U-BOLT 5/16" X 1.62" WITH SADDLE
18	0G7283	1	FLEX PIPE (8KW & 10KW)
	0F6528	1	FLEX PIPE (12KW - 17KW)
19	0C5453	4	SCREW HHTT M8-1.2 X 12
20	090388	4	SCREW TAPTITE M6-1.0 X 12
	090388	5	SCREW TAPTITE M6-1.0 X 12 (8KW & 10KW)
21	0G7336	1	MUFFLER
22	0G7566	1	FLEX COVER (8KW & 10KW)
	0G7586	1	FLEX COVER
23	0G7454	1	TAIL PIPE
24	0C8096	1	FAN, CURVED BLADE (8KW)
	0F8998	1	FAN CURVED BLADE (10KW)
	0E9579	1	FAN CURVED BLADE
25	049451	1	WASHER FLAT .406 ID X 1.62 OD
26	029092	1	BOLT IHHC 5/16-24 X 11.25" (8KW)
	0G7365	1	BOLT IHHC 3/8-24 X 12.50" (10KW)
	0D1838	1	BOLT IHHC 3/8-24 X 15.50" (12KW - 17KW)
	0G7408	1	BOLT IHHC 3/8-24 X 17.50"
27	059637	2	SCREW TAPTITE 3/8-16 X 3/4"
28	0G6629A	1	BRACKET, ALTERNATOR MOUNTING (8KW & 10KW)
	0G6629B	1	BRACKET, ALTERNATOR MOUNTING (12KW - 17KW)
	0G6629C	1	BRACKET, ALTERNATOR MOUNTING
29	022129	10	WASHER LOCK M8-5/16 (8KW)
	022129	11	WASHER LOCK M8-5/16
30	022259	4	NUT LOCK HEX 5/16-18

ITEM	PART #	QTY.	DESCRIPTION
31	039287	4	SCREW HHC M8-1.25 X 45 (8KW)
	051731	4	SCREW HHC M8-1.25 X 50
32	0C3168	3	5/16 SPECIAL LOCK WASHER
33	0C2417A	1	EARTH STRAP 3/8 X 3/8
34	0G7237A	1	BRACKET ENGINE MOUNTING (8KW)
	0G7237B	1	BRACKET ENGINE MOUNTING (10KW)
	0G7237C	1	BRACKET ENGINE MOUNTING
35	0388050ADO	1	CABLE, #6 30" BLACK BATTERY
36	0C7758	4	RUBBER MOUNT
37	083512	1	SCREW HHTT M8-1.25 X 16
38	0C9764	3	SCREW PLASTITE 1/4-15 X 3/4" (8KW ONLY)
39	0G6625	1	AIR IN SNORKEL (8KW ONLY)
40	048031K	2	BAND HOSE CLAMP Ø35.05 (8KW ONLY)
41	0G3332	1	AIR FILTER (8KW ONLY)
42	0G3490	1	AIR BOX (8KW ONLY)
43	022131	4	WASHER FLAT 3/8 (8KW & 10KW)
44	022237	4	WASHER LOCK 3/8 (8KW)
	022237	5	WASHER LOCK 3/8 (10KW)
	022237	1	WASHER LOCK 3/8
45	022511	4	BOLT HHC 3/8-16 X 1.25" (8KW & 10KW)
46	048031M	2	HOSE CLAMP 3/4" ID (8KW)
	048031M	4	HOSE CLAMP 3/4" ID
47	0F7065	1.5FT	HOSE RES 1/2 LP GAS (8KW)
	0F7065	3FT	HOSE RES 1/2 LP GAS
48	040173	2	CLAMP HOSE #5.5 0.62"-0.62" (10KW ONLY)
49	074995	1.5 FT	HOSE 1/2 ID LPG 350PSI UL21 (10KW ONLY)
50	099502	2	CLAMP HOSE #24 B1.06-2.00 (10KW ONLY)
51	0E9549	1	HOSE, INTAKE (10KW ONLY)
52	0E9589	1	CHOKE HOUSING (10KW ONLY)
53	0E9595	2	SCREW PPH HI-LO #6/1/2 W/ #5HD (10KW ONLY)
54	077075	1	BOOT, CHOKE SOLENOID (10KW ONLY)
55	077091	1	COTTER PIN (10KW ONLY)
56	0F9273	1	SOLENOID, 6 VOLTS DC (10KW ONLY)
57	0E9591	1	SPRING-CHOKE RETURN (10KW ONLY)
58	0E9588	1	LINKAGE, CHOKE (10KW ONLY)
59	0E9590	1	ASSEMBLY, CHOKE SHAFT (10KW ONLY)
60	0E9542	1	VALVE, CHOKE (10KW ONLY)
61	0D1683	2	SCREW PPHM M3-0.5 X (10KW ONLY)
62	0E9592	2	SCREW PPHM #4-40 X 3/8 SEMS (10KW ONLY)
63	0E9594	3	SCREW PPH HI-LO #14-15 X 1/2 (10KW ONLY)
64	035685	1	CLAMP HOSE #28 1.32-2.25
65	0E9581	1	AIR CLEANER (10KW ONLY)
66	029451	2.6 FT	TAPE ELEC UL FOAM 1/8 X 1/2
67	0F7065	1.25 FT	HOSE LP 1/2" LP (8KW ONLY)
68	048031M	2	HOSE CLAMP 3/4"
69	082025	2	NUT HEX LOCK M5-0.8 NYINS (12KW - 20KW)
70	075235	2	SCREW HHC M5-0.8 X 30 (12KW - 20KW)
71	0F9719	1	HOUSING REGULATOR (12KW - 20KW)
72	0G7909	1	CLAMP STL/VNL 2.5 X .281 (8KW & 10KW)
73	0G5958A	1	CAPACITOR 59UF (8KW)
	0G5958B	1	CAPACITOR 78UF (10KW)
74	0G2387	1	PLUG, GEAR COVER (12KW - 20KW)
75	0G4750	1	PLUG, GEAR COVER ADAPTOR-SMALL (12KW - 20KW)
76	0G7857	1	FOAM, EXHAUST DIVIDER (12KW-17KW)

PRE PACKAGED UNITS ONLY



**EXPLODED VIEW: ENCLOSURE
DRAWING #: 0G7851**

APPLICABLE TO: 2008 HSB

ITEM	PART #	QTY.	DESCRIPTION
1	0G7890	1	GASKET, DOOR SEAL
2	SEE SHEET 3		
3	0G7779	1	FOAM, FRONT PANEL ENCLOSURE
4	SEE SHEET 3		
5	0C8566	18	SCREW HHFC M6-1.0 X 20 (8KW, 10KW)
	0C8566	19	SCREW HHFC M6-1.0 X 20
6	0G6617	1	PANEL, ENGINE DIVIDER (8KW)
	0G6620	1	PANEL, ENGINE DIVIDER (10KW)
	0G6615	1	PANEL, ENGINE DIVIDER
7	0G7240	1	BAFFLE, INTAKE (8KW, 10KW)
	0G8287	1	BAFFLE, INTAKE
8	SEE SHEET 3		
9	0D3472	1	GROMMET OVAL 31.75 X 50.8 (8KW)
	0D3472	2	GROMMET OVAL 31.75 X 50.8
10	0F8039	1	MOUNTING CLIP
11	086729	1	CONTACTOR, STARTER (8KW)
12	0388040AJ0	1	CABLE, #6 RED BATTERY 38.5"
13	022097	2	WASHER, LOCK M6-1/4" (8KW)
	022097	1	WASHER, LOCK M6-1/4"
14	022127	1	NUT HEX 1/4-20 (8KW ONLY)
15	043116	2	SCREW HHC, M6-1.0 X 12 (8KW)
16	0E1330	1	GROMMET, Ø38.1 CROSS SLIT
17	0G7880	1	GASKET, ENGINE DIVIDER (8KW)
	0F8434	1	GASKET, ENGINE DIVIDER (10KW)
	0F8847	1	GASKET, ENGINE DIVIDER
18	0G7225	17	PANEL CLIP, M6-1.00
19	0G7622B	1	REGULATOR ASSEMBLY (8KW)
	0G7622A	1	REGULATOR ASSEMBLY (10KW)
	0G7581	1	PRESSURE STABILIZER REGULATOR ASSEMBLY
20	055414	1	LUG SLDLSS #2-#8 X 17/64 CU
21	0A1658	1	LOCK WASHER, SPECIAL 1/4
22	0G7225A	4	PANEL CLIP, 5/16-18
23	0G7339	4	BOLT, ENCLOSURE BASE TO MOUNTING PAD
24	0G7786A	4	BUSHING
25	0G6610	1	ENCLOSURE, BASE
26	0G7843	1	FOAM, FRONT EXHAUST SHIELD
	0G7849	1	FOAM, FRONT EXHAUST SHIELD (20KW)
27	0G6623	1	FRONT EXHAUST SHIELD
	0G7421	1	FRONT EXHAUST SHIELD (20KW)
28	0G7910	1	SCROLL, FAN (8KW, 10KW)
	0G7091	1	SCROLL, FAN
29	0G6618	1	PANEL, EXHAUST DIVIDER (8KW)
	0G6621	1	PANEL, EXHAUST DIVIDER (10KW)
	0G6616	1	PANEL, EXHAUST DIVIDER (14KW, 17KW)
	0G6809	1	PANEL, EXHAUST DIVIDER
30	0G7775	1	FOAM, EXHAUST END PANEL
31	0G7775A	2	FOAM, EXHAUST END PANEL SIDES
32	SEE SHEET 3		
33	0G7124A	1	HINGE ASSEMBLY - LEFT SIDE
34	0G7842	1	FOAM, BACK EXHAUST COMPARTMENT
35	0G6614	1	ENCLOSURE, BACK PANEL
36	051787	3	SCREW HHC M4-0.7 X 16
37	043180	6	WASHER FLAT M4
38	0G5900	1	COVER PLATE, RF MONITOR
39	0G5862	1	GASKET, RF COVER PLATE
40	0E6480	3	NUT HEX LOCK M4-0.7 NY NS
41	0E1330A	1	GROMMET, Ø38.1 CROSS SLIT WITH HOLE
42	0G7774A	2	1.00" THICK FOAM, ENCLOSURE ROOF

ITEM	PART #	QTY.	DESCRIPTION
43	SEE SHEET 3		
44	SEE SHEET 3		
45	0G7768	2	BUMPER
46	0G7124	1	HINGE ASSEMBLY - RIGHT SIDE
47	0D3700	11	NUT, LOCKING FLANGE M6-1.00
48	SEE SHEET 3		
49	SEE SHEET 3		
50	0G7650	1	BRACKET, CONTROL PNL FRONT (8KW,10KW)
	0G7651	1	BRACKET, CONTROL PNL FRONT
51	SEE SHEET 3		
52	0G6612B	1	ENCLOSURE END PANEL (8KW)
	0G6612	1	ENCLOSURE END PANEL
53	0G7258	2	SCREEN
54	0G7252	2	U-CLIP, M6-1.00
55	0G1705	2	SCREW HHFC M6-1.0 X 14
56	0G7829	1	FOAM, ENCLOSURE BACK PANEL
57	0E5968	11	GASKET, EXTRUDED TRIM
58	0G6812	1	COVER, FRONT TOP EXHAUST
59	0G7778	1	FOAM, FRONT TOP EXHAUST COVER
60	0G6811	1	COVER, BACK TOP EXHAUST
61	0G7776	1	FOAM, BACK TOP EXHAUST COVER
62	0G6619	1	MOUNTING PAD
63	SEE SHEET 3		
64	0G8166	12	WASHER, SELF LOCKING
65	0G7774	1	1.75" THICK FOAM, ENCLOSURE ROOF
66	0G8152	1	HARNESS GENERATOR TO EXTERNAL CONNECTION BOX (8KW)
	0G8153	1	HARNESS GENERATOR TO EXTERNAL CONNECTION BOX (10KW)
	0G8154	1	HARNESS GENERATOR TO EXTERNAL CONNECTION BOX
67	051713	2	WASHER FLAT M5
68	022152	5	WASHER LOCK #10
69	036937	2	SCREW PPHM#10-32 X 1
70	022158	5	NUT HEX #10-32
71	0C8911	1	POWER BLOCK
72	026850	1	WASHER SHAKEPROOF EXT 1/4 STEEL
73	049813	1	NUT HEX M6-1.0
74	0G0617	1	EXTERNAL CONNECTION BOX
75	0G8160	1	BADGE HOLDER
76	0G7253	1	LOUVER, SNAP IN
77	0G7653A	1	CONTROL PANEL FACIA (8KW)
	0G7653B	1	CONTROL PANEL FACIA (10KW)
	0G7653C	1	CONTROL PANEL FACIA
78	0742600179	1	WIRE ASSY, STARTER CONTROL TO STARTER MOTOR (8KW ONLY)
79	0G8131	1	PLUG 6.35 BLACK
80	0G8361A	1	GASKET, EXHAUST DIVIDER (8KW, 10KW)
	0G8361B	1	GASKET, EXHAUST DIVIDER (14KW, 17KW)
	0G8361C	1	GASKET, EXHAUST DIVIDER (20KW)
81	0G4933A	5	SCREW SWT 1/4-20 X 5/8
82	022447	1	1/4 SHAKEPROOF WASHER
83	SEE SHEET 3		
84	SEE SHEET 3		
85	047411	1	SCREW HHC, M6-1.0 X 16

**EXPLODED VIEW: ENCLOSURE
DRAWING #: 0G7851**

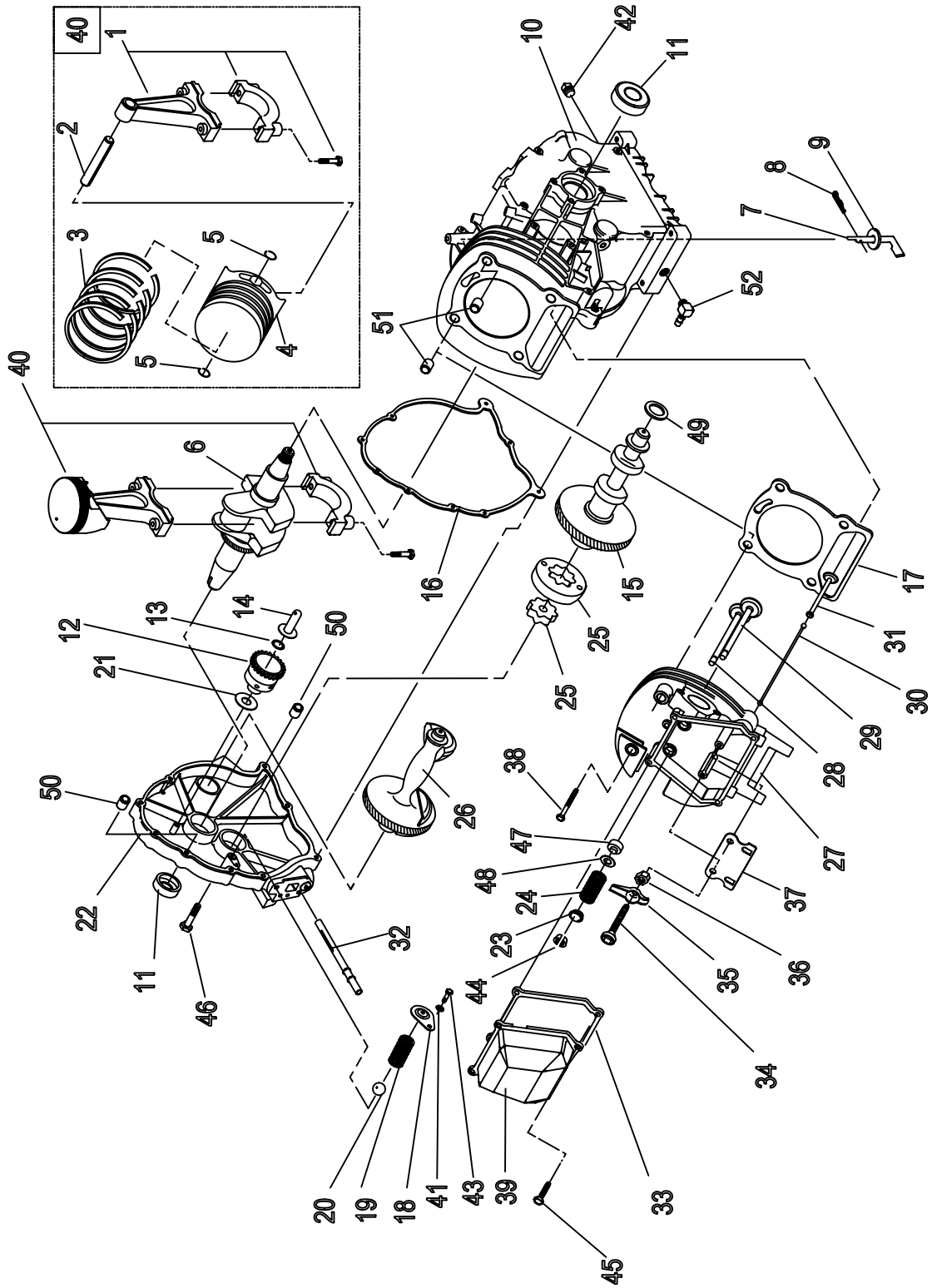
APPLICABLE TO: 2008 HSB

UP TO SERIAL# 5027039

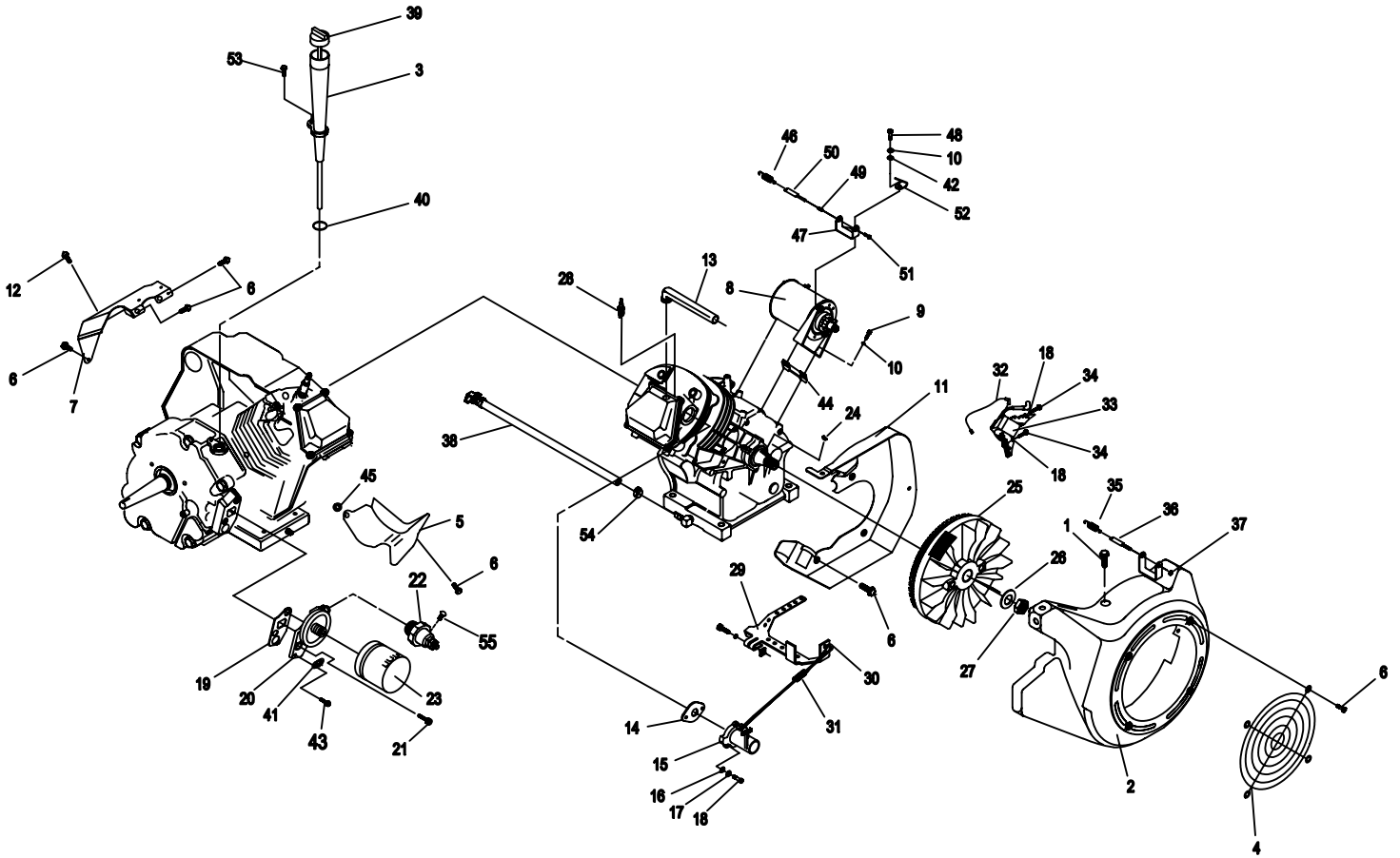
ITEM	PART#	QTY.	DESCRIPTION
2	0G6613	1	ENCLOSURE, FRONT PANEL
4	0G7486	1	STRIKER PLATE
8	090388	27	SCREW TAPTITE M6-1.0 X 12
32	0G6612A	1	ENCLOSURE, EXHAUST SIDE PANEL
43	0G8223	1	ENCLOSURE ROOF ASSY, GALVANEAL TAN
	0G8682	1	ENCLOSURE ROOF ASSY, GALVANEAL GRAY
	0G8683	1	ENCLOSURE ROOF ASSY, ALUMINUM GRAY
44	0G7487	1	LATCH ASSEMBLY
48	0G6624	1	1/4 LATCH ASSEMBLY
49	0G6626	1	LATCH PAWL
51	075414	2	PIVET POP .1875 X .44
63	0G7827	2	BALL PLUNGER

FROM SERIAL# 5027040

ITEM	PART#	QTY.	DESCRIPTION
2	0G9377	1	ENCLOSURE, FRONT PANEL
4	REMOVED		
8	090388	23	SCREW TAPTITE M6-1.0 X 12
32	0G6612C	1	ENCLOSURE, EXHAUST SIDE PANEL
43	0G9412	1	ENCLOSURE ROOF ASSY, GALVANEAL TAN
	0G9413	1	ENCLOSURE ROOF ASSY, GALVANEAL GRAY
	0G9414	1	ENCLOSURE ROOF ASSY, ALUMINUM GRAY
44	REMOVED		
48	0G6624	2	1/4 LATCH ASSEMBLY
49	0G6626	2	LATCH PAWL
51	0G9894	2	RIVET POP 5 X 8F NYLON
63	REMOVED		
83	0G9386	2	THREADED SPACER M6-1.0
84	052857	2	NUT TOP LOCK FLANGE M6-1.0



1	0E3221	1	ASSEMBLY, CONNECTING ROD
2	0E1466	1	PIN, PISTON DIA 20
3	0G2565	1	RING SET, PISTON DIA 90
4	0G2751	1	PISTON, FLAT TOP DIA 90 COATED
5	071983	2	RETAINER, PISTON PIN
6	0E8440	1	ASSEMBLY, CRANKSHAFT
7	0A7628	1	ARM, GOVERNOR RC45
8	078658	1	PIN, "R" GOVERNOR ARM
9	078659	2	WASHER, GOVERNOR ARM THRUST
10	0F8446C	1	CRANKCASE, MACHINED GH-410
11	0E3812	2	SEAL, 35 I.D. CRANKSHAFT
12	0E6519	1	ASSEMBLY, GOVERNOR GEAR
13	078645	1	C-RING, GOVERNOR GEAR RETAINER
14	0A7811	1	SPOOL, GOVERNOR-MACHINED
15	0G3358	1	ASSEMBLY, CAMSHAFT & GEAR 410HSB
16	076701	1	GASKET, CRANKCASE
17	021713B	1	GASKET, HEAD 410
18	078691	1	COVER, OIL PRESSURE RELIEF
19	0A5771	1	SPRING, OIL RELIEF 360
20	0A5776	1	BALL, DIA 11/32 PRESSURE LF
21	076361	1	WASHER, THRUST GOVERNOR GEAR
22	0G4233C	1	ASSY GEAR COVER GH410 TOP CHK ONLY
23	0D2274	2	RETAINER, VALVE SPRING
24	0C4391	2	SPRING, VALVE L-71.7N
25	086025	1	SET, GEROTOR 12 THICK
26	0E3341	1	BALANCER, MACHINED
27	0G8392	1	ASSEMBLY, CYLINDER HEAD
28	086516	1	VALVE, EXHAUST
29	086517	1	VALVE, INTAKE
30	0D9853B	2	PUSH, ROD
31	083897	2	TAPPET
32	077158	1	ASSEMBLY, OIL PICK-UP SCREEN
33	0C3150	1	GASKET, ROCKER COVER 410
34	072694	2	STUD, D20 PIVOT BALL
35	083907	2	ARM, SOLID ROCKER
36	0D3998	2	NUT, HEX M8-1.0 G8 YELLOW CHROME
37	078694	1	PLATE, PUSH ROD GUIDE
38	021742	4	SCREW, HHFL M10-1.5 X 105
39	0D6094	1	ASSEMBLY, ROCKER COVER BREATHER
40	0G4194	1	ASSY, PISTON HC GH410 COATED (I/N'S:1-5)
41	0G5792	1	WASHER LOCK M5 RIBBED
42	0D4788	1	PLUG, STD PIPE 3/8 STEEL SQ HEAD
43	045770	1	SCREW, HHC M5-0.8 X 10 G8.8
44	086515	4	KEEPER, VALVE SPRING
45	078606	4	SCREW, SHC M6-1.0 X 12 W/LOCK WASHER
46	0A1442	8	SCREW, HHFC M8-1.25 X 42
47	078672	1	SEAL, VALVE STEM D7
48	089673	2	WASHER, VALVE SPRING
49	0B2104	1	WASHER, LARGE SPRING
50	078699B	2	SLEEVE, DOWEL PIN 12mm DIA.
51	078699C	2	SLEEVE, DOWEL PIN 14mm DIA.
52	043790A	1	BARBED EL 90 3/8NPT X 3/8 VS



EXPLODED VIEW: ENGINE PARTS

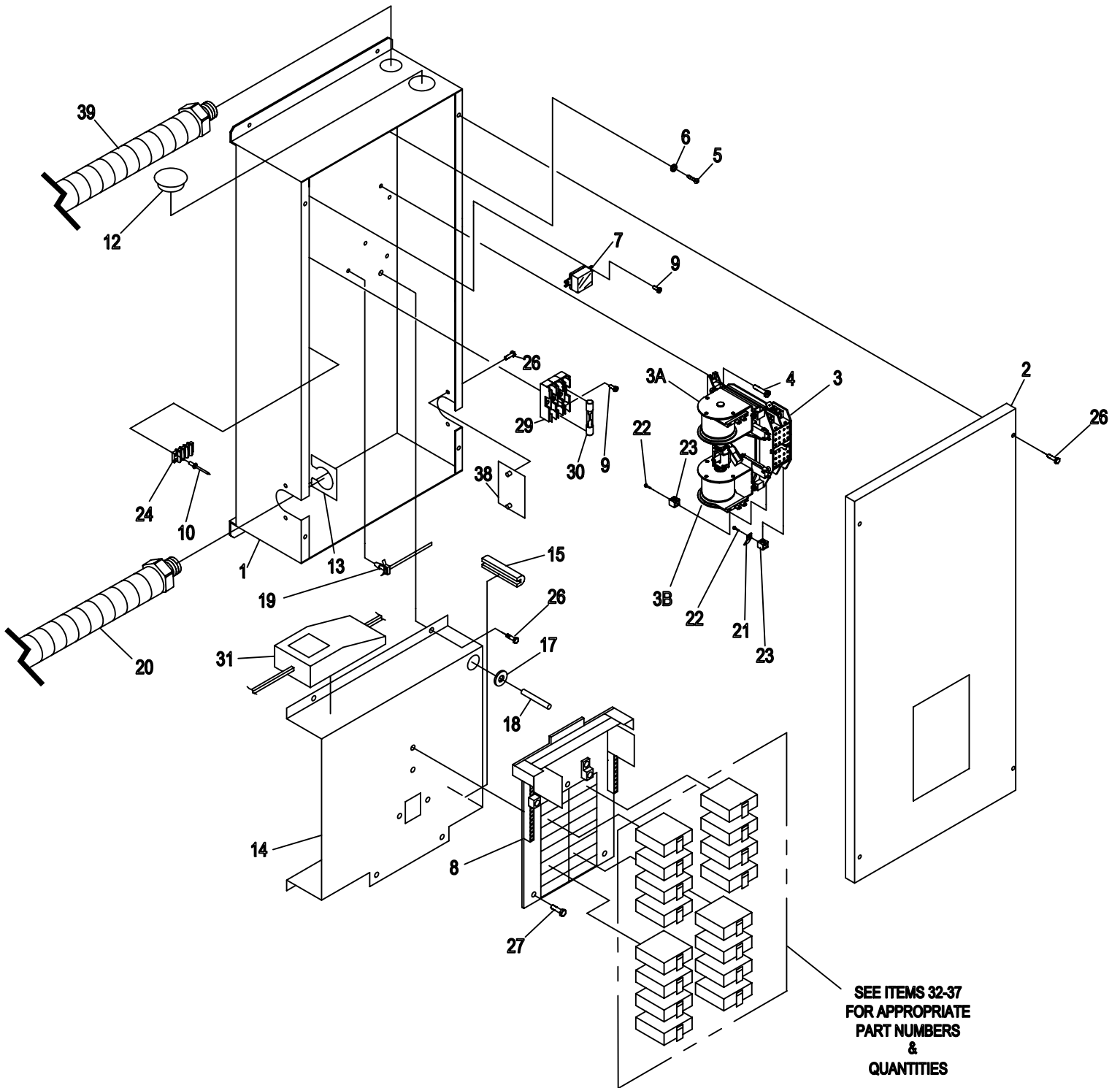
DRAWING #: 0G8146

APPLICABLE TO: 2008 HSB

GROUP

ITEM	PART #	QTY.	DESCRIPTION
1	0C1069	5	SCREW, TAPTITE M6-1.0X8 YELLOW CHROME
2	0D2922	1	HOUSING, BLOWER
3	0G1220	1	TUBE 410GH OIL FILL/CHECK
4	0C9997	1	GUARD, FAN
5	088434	1	WRAPPER, BOTTOM
6	045756	11	SCREW, TAPTITE M6-1X10 YELLOW CHROME
7	0C4176A	1	WRAPPER, TOP
8	0D9004A	1	ASSY, STARTER
9	059985	2	SCREW, SHC M8-1.25 X 45 G12.9
10	022129	3	WASHER, LOCK M8-5/16
11	0C2458A	1	BACKPLATE, L/F D/F
12	0G7967	1	SCREW, HHTT 5/16"-18 X 1/2" SEMI-GIMLET
13	0G7734	1	BREATHER HOSE
14	091039	1	GASKET, INTAKE ADAPTER
15	0C9619	1	ASSEMBLY, PLASTIC CARB
16	049811	2	WASHER, FLAT M6
17	022097	4	WASHER, LOCK M6-1/4
18	040945	2	SCREW, SHC M6-1.0 X 20 G12.9
19	086999	1	GASKET,OIL FILTR ADAPTER
20	0D5667A	1	ADAPTER, OIL FILTER
21	049821	2	SCREW, SHC M8-1.25 X 30 G12.9
22	0D9235	1	SWITCH, OIL 5 PSI
23	070185E	1	OIL FILTER
24	082774	1	KEY, WOODRFF 4 X 19D
25	091222C	1	FLYWHEEL WITH RING GEAR 27 DEGREE
26	067198N	1	WASHER,BELV-20 X 2.2
27	067890	1	NUT, HEX - FLYWHEEL
28	0E7585	1	SPARKPLUG
29	072734	1	ASSEMBLY,GOVERNOR LEVER 12 HP
30	072735	1	ROD,GOVERNOR CONTROL.
31	0C3978	1	SPRING, ANTI-LASH
32	0C6040	1	ASSEMBLY, WIRE
33	0G9241	1	ASSEMBLY, IGNITION COIL ADVANCE W/DIODE
34	0G3111	2	SCREW, TAPTITE M6-1.0 X 25 ZINC
35	0F3800	1	SPRING GOVERNOR
36	083502	1	BOLT, GOVERNOR ADJUST M5
37	082025	1	NUT HEX LOCK M5-0.8 NYINS ZINC
38	0G4403	1	ASSY OIL DRAIN HOSE
39	0C8434D	1	DIPSTICK, GTH410
40	090072	1	O-RING 9/16 X 3/4 X 3/32
41	094090	1	SWITCH, THERMAL 293F
42	022145	1	WASHER FLAT 5/16 - M8
43	0F2094	2	SCREW, M3-0.5 X 6 SEMS
44	0C4373	1	SPACER ENDFRAME
45	022717B	1	GOMMET
46	0F3865	1	SPRING SECONDARY
47	0F3855	1	BRACKET SECONDARY GOVERNOR SPRING
48	039253	1	SCREW HHC M8-1.25 x 20
49	0D3751	1	SPRING, IDLE RETURNING
50	0F3921	1	BARREL GOVERNOR ADJUSTMENT
51	0C8493	1	SCREW SHC M5-0.8 x 30
52	0D8758	1	ENGINE LIFT HOOK
53	0D6147	1	SCREW HHFCS M6-1.0X10 G8.8
54	0G3662	1	CLAMP,HOSE OETIKER STEPLESS 17
55	036916	2	SCREW, PPHM #8-32 X 1/4

GROUP D



SEE ITEMS 32-37
FOR APPROPRIATE
PART NUMBERS
&
QUANTITIES

EXPLODED VIEW: GTS LOAD CENTER
DRAWING #: OG8786

GROUP D

APPLICABLE TO: 2008 HSB

ITEM	PART #	QTY.	DESCRIPTION
1	OG80700ST14	1	GTS LOAD CENTER ENCLOSURE GRAY
2	OG81010ST14	1	COVER 8 POS GTS LOAD CTR GRAY
	OG81020ST14	1	COVER 10 POS.GTS LOAD CTR GRAY
	OG81030ST14	1	COVER 12 POS.GTS LOAD CTR GRAY
	OG81040ST14	1	COVER 14 POS.GTS LOAD CTR GRAY
	OG81060ST14	1	COVER 16 POS.GTS LOAD CTR GRAY
3	OC2237	1	TRANSFER SWITCH HOME STANDBY 100A 2P 250V
3A	077220	1	COIL UTILITY
3B	077220A	1	COIL STANDBY
4	074908	4	SCREW HHTT M5-0.8 X 10
5	024912	1	SCREW TAPTITE 1/4-20 X 5/8
6	0A1658	1	LOCK WASHER, SPECIAL-1/4"
7	063617	1	RELAY PANEL 12VDC DPDT 10A@240VAC
8	0E7889A	1	8CIR L/CNTR 125A/240V
	0E7889	1	12CIR L/CENTR 125A/240V (ALSO USED FOR 10 CIRCUIT)
	0F9213	1	16CIR L/CENTR 125A/240V (ALSO USED FOR 14 CIRCUIT)
9	0A1495	4	SCREW HHTT M4-0.7 X 10
10	0A1661	2	RIVET POP .156" X .675"
11	-	-	-
12	081108	1	PLUG PLASTIC
13	OG8095AST14	1	HARNESS ADAPTER PLATE GRAY
14	OG81300ST14	1	SUBPLATE GTS LOAD CENTER GRAY
15	0F4790	2.63"	U-CHANNEL
16	-	-	-
17	022717A	1	GROMMET 3/8 X 1/16 X 1/4
18	0E6155	1	ARM EXTENDER PIN
19	OG8233A	4	CABLE TIE SELF MOUNTING 4.3LG
20	OG8138	1	HARN GTS-MAIN PNL 8CIR W/NEUT
	OG8139	1	HARN GTS-MAIN PNL 10CIR W/NEUT
	OG8140	1	HARN GTS-MAIN PNL 12CIR W/NEUT
	OG7955	1	HARN GTS-MAIN PNL 14CIR W/NEUT
	OG8141	1	HARN GTS-MAIN PNL 16CIR W/NEUT
21	074138	3	LUG QUICK DISCONNECT NI-S 10X45 DEG BRASS / TIN
22	0H0090A	6	SCREW PPHM #10-32X5/16 SEMS SC
23	077033	6	LUG SLDLSS 1/0-#14X9/16 AL/CU
24	0D4698	1	BLOCK TERM 20A 6 X 3 X 1100V
-	-	-	-
26	0A7215	10	SCREW SW 1/4"-20 X 5/8" WITH WASHER
-	-	-	-
27	066849	2	SCREW HHTT M5-0.8 X 16 (8, 10, 12, 14, 16 CIRCUIT)
28	OG7954A	1	HARNESS LOAD CTR INT.CONN 8-16 (NOT SHOWN)
	OG7954B	1	HARNESS LOAD CTR INT.CONN T1 (NOT SHOWN)
	OG7954C	1	HARNESS LOAD CTR INT.CONN T2 (NOT SHOWN)
29	0D2572	1	FUSEBLOCK 30A 600V 3POS W/SQ
30	073590A	3	FUSE 5A
31	OG8487	1	BATTERY CHARGER ASSY
			<u>8 10 12 14 16 CIRCUIT</u>
32	0E7888	A/R	CIRCUIT BREAKER 20A 2P 1 1 1
33	0E7888A	A/R	CIRCUIT BREAKER 30A 2P 1 1 1
34	0E7888B	A/R	CIRCUIT BREAKER 15A 1P 5 3 5 4 5
35	0E7888C	A/R	CIRCUIT BREAKER 20A 1P 1 3 3 4 5
36	0E7888D	A/R	CIRCUIT BREAKER 40A 2P 1 1 1
37	0E7888E	A/R	CIRCUIT BREAKER 50A 2P 1 1
38	OG80860ST14	1	HARNESS ENTRY COVER GRAY
39	OG7951	1	HARN GTS-EXT CONN BOX 8KW
	OG7952	1	HARN GTS-EXT CONN BOX 10KW
	OG7953	1	HARN GTS-EXT CONN BOX 14/17KW