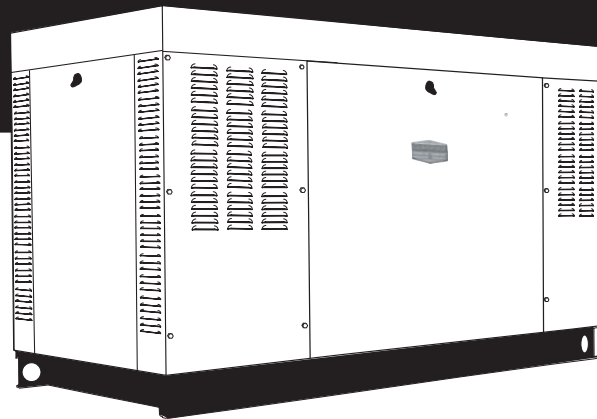


Serial Number

**QT**  
**2.5L**  
**25kW**

**Model: 005212-0**

**STANDBY GENERATOR  
OWNER'S MANUAL**



*A new standard of reliability*

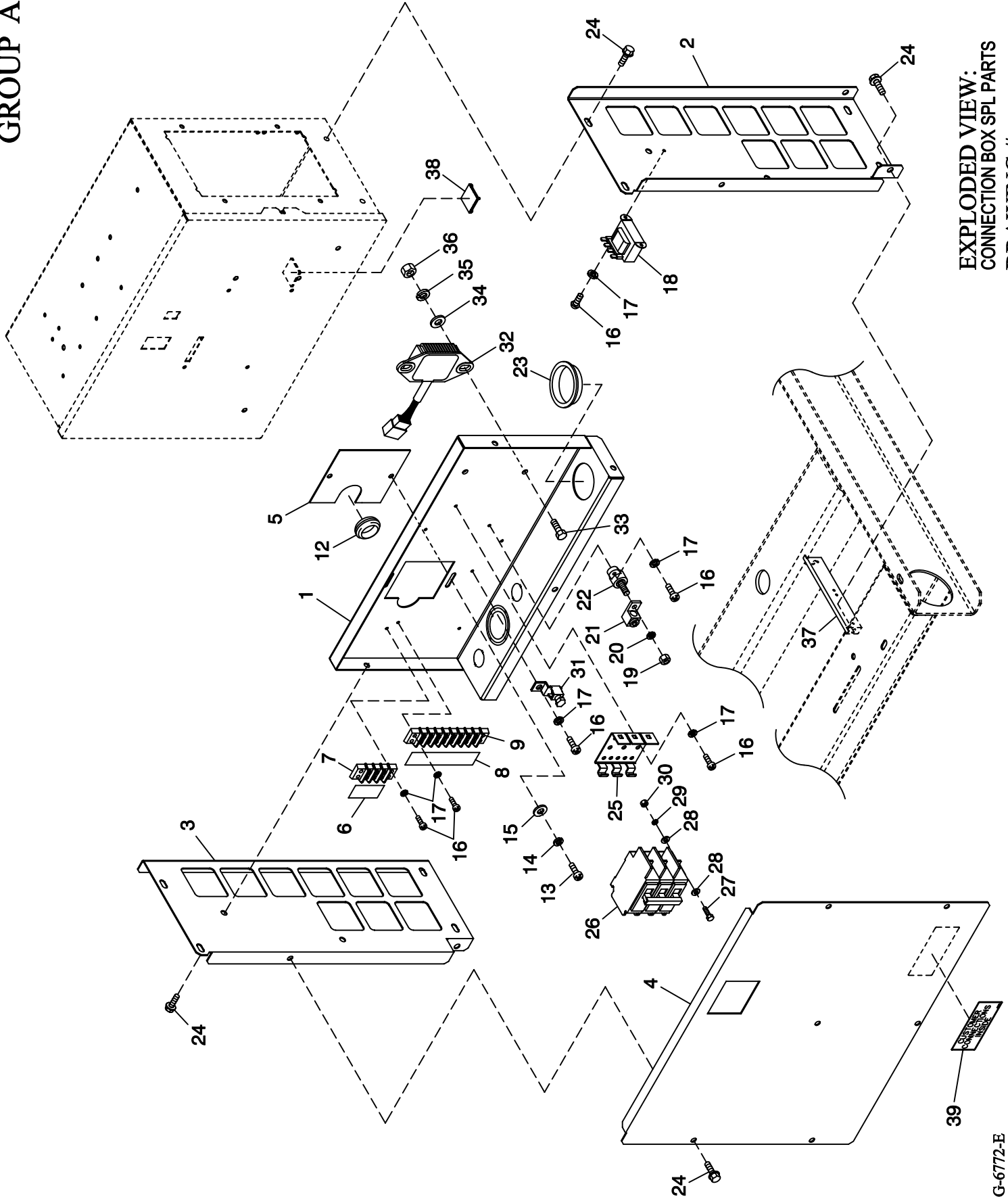


— ⚠ CAUTION ⚠ —

**ONLY QUALIFIED ELECTRICIANS OR CONTRACTORS SHOULD ATTEMPT INSTALLATION!**

This manual should remain with the unit.

GROUP A



EXPLODED VIEW:  
CONNECTION BOX SPL PARTS  
DRAWING #: 0F7352

## EXPLODED VIEW: CONNECTION BOX SPL PARTS

DRAWING #: 0F7352

GROUP A

APPLICABLE TO:

ITEM	PART #	QTY.	DESCRIPTION
1	0F7135	1	BREAKER TRAY BACK/BOTTOM
2	0F7022	1	SUPPORT CONTROL PANEL SIDE RH
3	0F7021	1	SUPPORT CONTROL PANEL SIDE LH
4	0F7260	1	COVER CIRCUIT BREAKER 2P
	0F7136	1	COVER CIRCUIT BREAKER 3P
5	0F6156	1	PLATE WIRE SNGL GALV
6	0F4464	1	DECAL CUST CONN 120V UTILITY
7	0D4698	REF	BLOCK TERM 20A 6 X 3 X 1100V
8	0F3824	1	DECAL UTIL SENSE/CUST CONN
9	057701	REF	BLOCK TERM 20A 8 X 6 X 1100V
10	0F6146	1	HANG TAG 2 WIRE START (NOT SHOWN)
12	081008	1	GROMMET 1.25 X .25 X .75
13	0C2267	2	SCREW HHTT M5-0.8 X 12 BP
14	049226	2	WASHER LOCK M5
15	051713	2	WASHER FLAT M5
16	0C2212	11	SCREW PHTT M4-0.7 X 16 ZYC
17	022264	11	WASHER LOCK #8-M4
18	0F6366A	1	XFMR DUAL 104V/16V (1 PHASE)
	0F6366B	1	XFMR DUAL 120V/16V (3 PHASE)
19	022241	1	NUT HEX 3/8-16 STEEL
20	022237	1	WASHER LOCK 3/8
21	057329	1	LUG SLDLSS 350-#6 X 13/32 AL/CU
22	057073	1	JUNCTION BLOCK 3/8-16
23	023484J	1	BUSHING SNAP SB-2000-26
24	0E3257	15	SCREW HWHTF M6-1.0 X 16
25	0E7890	REF	BRKT CB MTG BACK 2P
	0E6002	REF	MTG TRACK BQ SIEMENS CB 3P
26	0D5544	REF	CB 0100A 2P 240V S BQ2 LL (1.5L 2 POLE)
	062812	REF	CB 0080A 3P 240V S BQ3 LL (1.5L 3 POLE)
	0A2077	REF	CB 0125A 2P 240V S BQ2 LL (2.5L 2 POLE)
	040532	REF	CB 0100A 3P 240V S BQ3 LL (2.5L 3 POLE)
27	052619	REF	SCREW HHC M5-0.8 X 20 G8.8 (NOT SHOWN)
28	023897	REF	WASHER FLAT #10 ZINC (NOT SHOWN)
29	049226	REF	WASHER LOCK M5 (NOT SHOWN)
30	051716	REF	NUT HEX M5-0.8 G8 CLEAR ZINC (NOT SHOWN)
31	025433	1	LUG SLDLSS #6-14 X 13/64 CU
32 *	0A1354A	REF	REGULATOR - DC ALT
33 *	042568	REF	SCREW HHC M6-1.0 X 20 G8.8
34 *	022473	REF	WASHER FLAT 1/4-M6 ZINC
35 *	022097	REF	WASHER LOCK M6-1/4
36 *	049813	REF	NUT HEX M6 X 1.0 G8 YEL CHR
37 *	0F7194	REF	BRACKET PANEL SUPPORT 1.5L C1
38	057593	1	CABLE TIE MOUNT BLACK
39	0F1733	1	DECAL CUSTOMER CONNECT INSIDE

\* USED ON 1.5L ONLY.



**EXPLODED VIEW: CPL ALTERNATOR DIRECT EXCITATION  
DRAWING #: 0F7491**

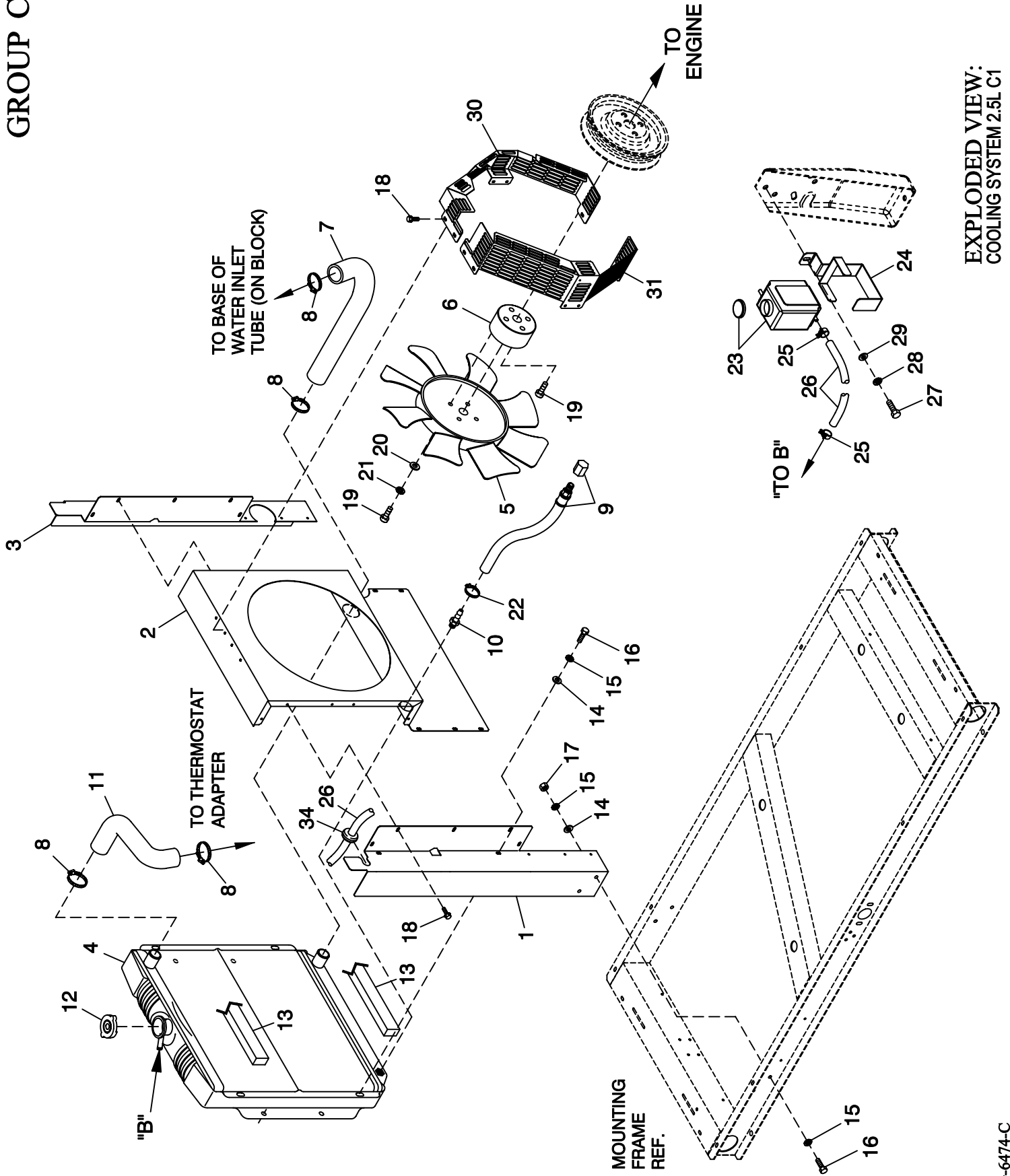
**GROUP A**

**APPLICABLE TO:**

<b>ITEM</b>	<b>PART #</b>	<b>QTY.</b>	<b>DESCRIPTION</b>
1	0F7489	1	ROTOR 30KW DIRECT 390 4P 1800
	0F7490	1	ROTOR 25KW 3PH DIRECT 390 1800
2	0F7458A	1	STR 390 30AD1 HSB TECUM
	0F7459	1	ASSY STR 390 25 GD1 CPL
3	0C9708	REF	INSTR HYPOT TEST (NOT SHOWN)
4	SEE ENGINE EV	REF	ENGINE ADAPTER
5	SEE ENGINE EV	REF	FLEXPLATE
6	0F7364B	1	ASSY FLYWHEEL CPL W/25MM FAN B
7	0E5706	1	REAR BEARING CARRIER 390/DRCT
8	0F7874	1	ASSY BRUSH HOLDER 390/HSB
9*	070892	1	SLIP RING MACHINED
10*	047248	1	BALL BEARING-45 MM
11	023454	1	KEY WOODRUFF #E
12	077043E	1	CONDUIT FLEX 1.0"ID (20" LG)
13	04576100BK	4	STUD M14-2.0 X 490 G5 ZINC
14	052646	4	WASHER FLAT M14
15	043123	4	WASHER LOCK M14
16	051779	4	NUT HEX M14-2.0 G8 YEL CHR
17	0A2601	1	SCREW HHC M16-2.0 X 45 G8.8
18	0A2602	1	WASHER FLAT .688ID X 3.25OD
19	0F8408	4	SCREW HHC M10-1.50 X 16 G10.9
20	046526	4	WASHER LOCK M10
21	0C3993	4	SCREW HHTT M4-0.7 X 25 BP
22	022264	4	WASHER LOCK #8-M4
23	038150	4	WASHER FLAT #8 ZINC
24	077043B	1	CONDUIT FLEX .50"ID (16" LG)

\* ROTOR REPLACEMENT PARTS

# GROUP C



EXPLODED VIEW:  
 COOLING SYSTEM 2.5L C1  
 DRAWING #: 0F7363

## EXPLODED VIEW: COOLING SYSTEM 2.5L C1

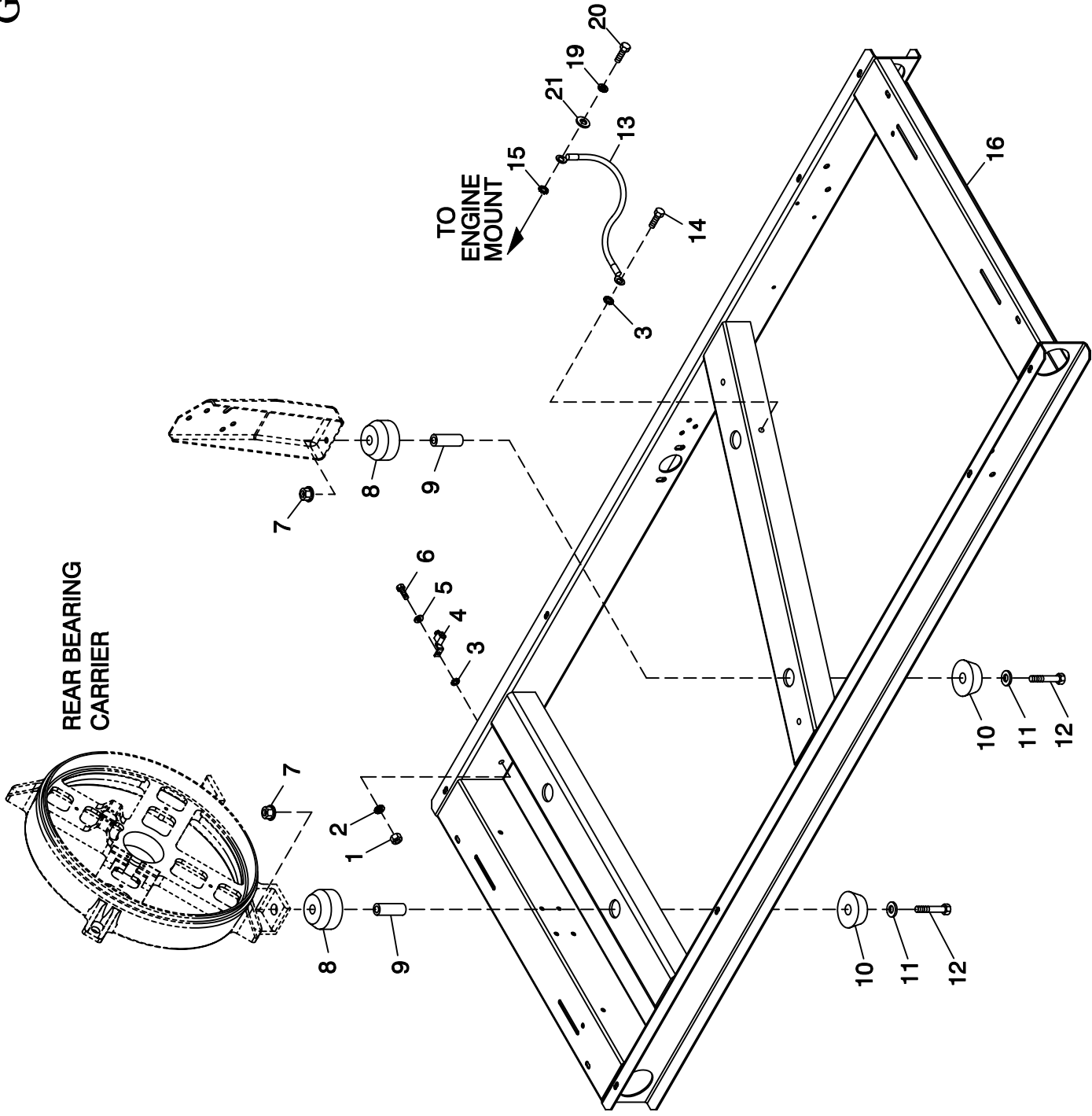
DRAWING #: 0F7363

GROUP C

APPLICABLE TO:

ITEM	PART #	QTY.	DESCRIPTION
1	0F7074	1	SUPPORT RADIATOR LH SIDE
2	0F7076	1	VENTURI 16" DIA. FAN
3	0F7075	1	SUPPORT RADIATOR RH SIDE
4	0E9837A	1	RADIATOR 2.5L CPL
5	0F0230A	1	FAN COOL 16" DIA 8 BLADE
6	0F7130	1	SPACER FAN 2.5L C1
7	0E9833	1	HOSE 2.5L FORD LOWER RADIATOR
8	099502	4	CLAMP HOSE #24 B1.06-2.00
9	069860C	1	HOSE OIL DRAIN ASSY 21"
10	035461	1	BARBED STR 1/4 NPT X 3/8
11	0F0127	1	HOSE UPPER RADIATOR 174MM TAL
12	046627	1	CAP RADIATOR
13	052250	2	TAPE FOAM 1 X 1 (20" LG)
14	022473	4	WASHER FLAT 1/4-M6 ZINC
15	022097	12	WASHER LOCK M6-1/4
16	0C8566	8	SCREW HHFC M6-1.0 X 20 G8.8
17	049813	4	NUT HEX M6 X 1.0 G8 YEL CHR
18	0C2454	24	SCREW THF M6-1 X 16 N WA Z/JS
19	040976	8	SCREW SHC M8-1.25 X 20 G12.9
20	022145	4	WASHER FLAT 5/16-M8 ZINC
21	022129	4	WASHER LOCK M8-5/16
22	0C7649	1	CLAMP HOSE .38-.87
23	076749	1	TANK COOLANT RECOVERY
24	0F1433	1	BRACKET 2.5L FORD WATER BOTTLE
25	048031C	2	CLAMP HOSE BAND 1/4
26	029032	1	HOSE 9/32 ID (40" LG)
27	049814	REF.	SCREW HHC M10-1.5 X 25 G8.8
28	046526	REF.	WASHER LOCK M10
29	022131	REF.	WASHER FLAT 3/8-M10 ZINC
30	0F7307	1	GUARD FAN RH C1 CPL
31	0F7308	1	GUARD FAN LH C1 CPL
34	029107	1	GROMMET 7/8 X 3/16 X 5/8

GROUP C



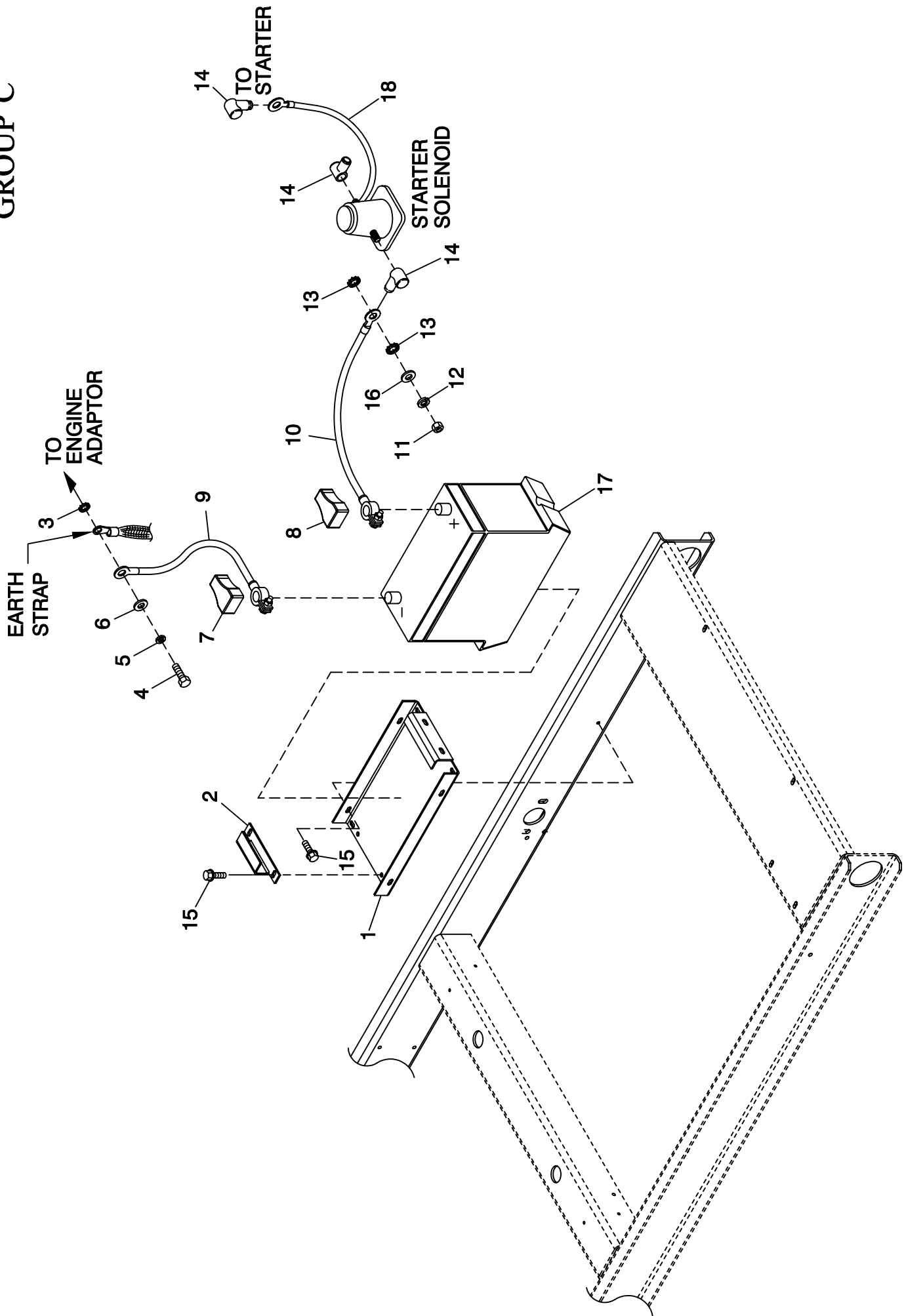
EXPLODED VIEW:  
MOUNTING BASE 2.5L FORD  
DRAWING #: 0F7416



**EXPLODED VIEW: MOUNTING BASE 2.5L FORD****DRAWING #: 0F7416****GROUP C****APPLICABLE TO:**

<b>ITEM</b>	<b>PART #</b>	<b>QTY.</b>	<b>DESCRIPTION</b>
1	049813	1	NUT HEX M6 X 1.0 G8 YEL CHR
2	022097	1	WASHER LOCK M6-1/4
3	026850	2	WASHER SHAKEPROOF EXT 1/4 STL
4	055414	1	LUG SLDLSS #2-#8 X 17/64 CU
5	022473	1	WASHER FLAT 1/4-M6 ZINC
6	047411	1	SCREW HHC M6-1.0 X 16 G8.8
7	052860	4	NUT FLANGED HEX M12-1.75
8	052251	4	DAMPENER VIBRATION 40 BLUE
9	052257	4	SPACER .49 X .62 X 1.87 PWDR/ZNC
10	052252	4	DAMPENER VIBRATION
11	052259	4	WASHER FLAT M12
12	052891	4	SCREW HHC M12-1.75 X 80 G8.8
13	0536210261	1	ASSY WIRE #0 12.00"
14	074906	1	SCREW HHTT M6-1.0 X 20 BP
15	025507	REF	WASHER SHAKEPROOF EXT 7/16 STL
16	0F6935	1	MTG BASE, 2.5L FORD C1 CPL
19	046526	REF	WASHER LOCK M10
20	049814	REF	SCREW HHC M10-1.5 X 25 G8.8
21	022131	REF	WASHER FLAT 3/8-M10 ZINC

GROUP C

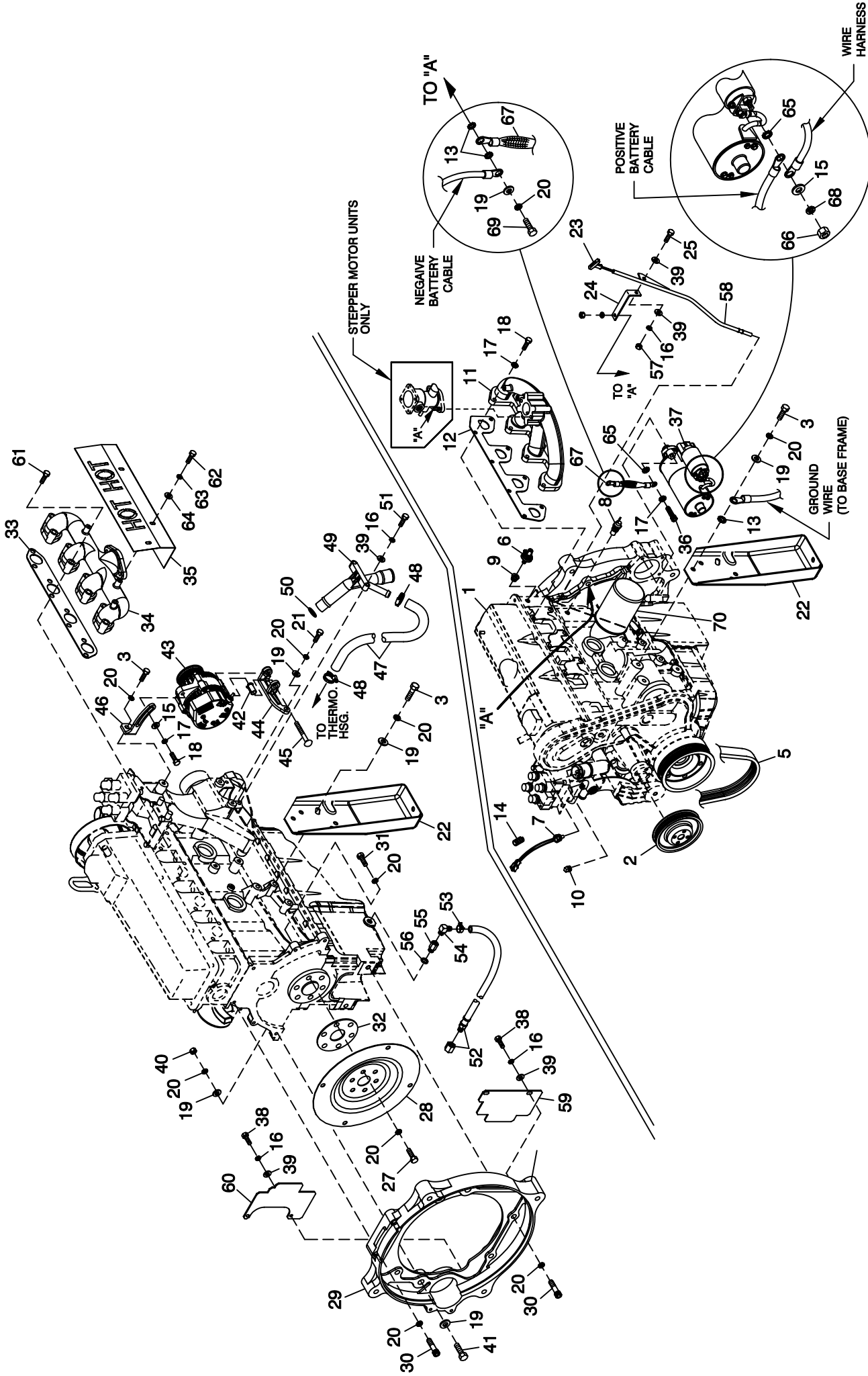


EXPLODED VIEW:  
BATTERY C1 CPL  
DRAWING #: 0F7422

**EXPLODED VIEW: BATTERY C1 CPL****DRAWING #: 0F7422****GROUP C****APPLICABLE TO:**

<b>ITEM</b>	<b>PART #</b>	<b>QTY.</b>	<b>DESCRIPTION</b>
1	0F3408B	1	BATTERY TRAY C1 CPL
2	0F3411	1	STRAP BATTERY RETAINMENT
3	025507	REF	WASHER SHAKEPROOF EXT 7/16 STL
4	052647	REF	SCREW SHC M10-1.5 X 25 G12.9
5	046526	REF	WASHER LOCK M10
6	022131	REF	WASHER FLAT 3/8-M10 ZINC
7	050331A	REF	BATT POST COVER RED +
8	050331	REF	BATT POST COVER BLK -
9	038805J	1	CABLE BATTERY BLK #1 X 30.00
10	038804U	1	CABLE BATTERY RED #1 X 28.00
11	045771	REF	NUT HEX M8-1.25 G8 YEL CHR
12	022129	REF	WASHER LOCK M8-5/16
13	027482	REF	WASHER SHAKEPROOF EXT 5/16 STL
14	0F3976	3	BOOT CONTACTOR CABLES
15	0C2454	4	SCREW THF M6-1 X 16 N WA ZJJS
16	022145	REF	WASHER FLAT 5/16-M8 ZINC
17	077483	REF	BATTERY 12VDC 75-AH 26
18	0742600131	1	ASSY WIRE #16 RED 1.6

GROUP D



EXPLODED VIEW:  
ENGINE COMMON PARTS 2.5L  
DRAWING #: 0F7423

REVISION: G-6531-C  
DATE: 9/28/05

**EXPLODED VIEW: ENGINE COMMON PARTS 2.5L**  
**DRAWING #: 0F7423**

**GROUP D**

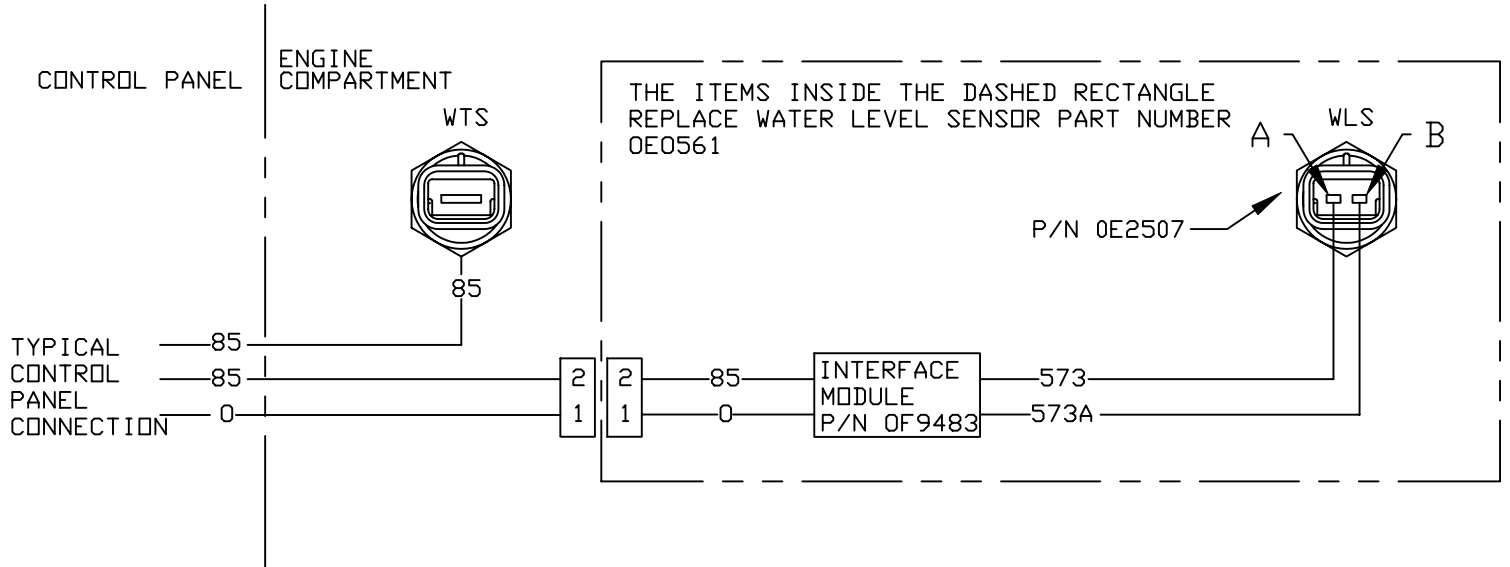
APPLICABLE TO: 2.5L FORD

ITEM	PART #	QTY.	DESCRIPTION
1	0E9909	REF	ENGINE 2.5L FORD
2	0E9739	1	PULLEY 2.5L FORD WATER PUMP
3	049814	7	SCREW HHC M10-1.5 X 25 G8.8
5	0D3488B	1	SERPENTINE BELT - 40.85" LENGTH
6	0A8584	1	SWITCH OIL PRESSURE 10PSI 2POL
7	0E0561	1	ASSY WATER LEVEL SENSOR C/E PL
8	0A6751	1	SW-TMP 245 DEG 3/8 NPT
9	035579	1	BUSHING REDUCER 1/4 TO 1/8
10	026925	1	PLUG STD PIPE 3/8 STEEL SQ HD
11	0E9611	1	MANIFOLD INTAKE (MACHINED) (STEPPER MOTOR)
12	0E9681	1	GASKET 2.5L FORD INTAKE MAN.
13	025507	3	WASHER SHAKEPROOF EXT 7/16 STL
14	077043A	1	CONDUIT FLEX .38" ID (6" LG)
15	022145	2	WASHER FLAT 5/16-M8 ZINC

ITEM	PART #	QTY.	DESCRIPTION
16	022097	7	WASHER LOCK M6-1/4
17	022129	10	WASHER LOCK M8-5/16
18	043107	10	SCREW HHC M8-1.25 X 25 G8.8
19	022131	13	WASHER FLAT 3/8-M10 ZINC
20	046526	23	WASHER LOCK M10
21	052625	2	SCREW SHC M10-1.5 X 35 G12.9
22	0E9708	2	ENGINE FOOT 2.5L FORD
23	0E9738	1	DIPSTICK 2.5L FORD
24	0E9929	1	BRACKET DIPSTICK TUBE
25	042568	1	SCREW HHC M6-1.0 X 20 G8.8
26	0F7428	1	HARNNESS ENGINE 2.5L R-100 CPL (NOT SHOWN)
27	0D5417	6	SCREW HHC M10-1.0 X 25 G10.9
28	0F3903B	1	FLEX PLATE 2 POLE 2.5L FORD
29	0E9655	1	ADAPT CASTING MACH 2.5L FORD
30	057192	4	SCREW SHC M10-1.5 X 30 G12.9
31	060619	2	SCREW SHC M10-1.50 X 40 G12.9
32	0E8940	1	SPACER FLEXPLATE HSB
33	0E9680	1	GASKET 2.5L FORD EXHAUST MAN.
34	0E9609	1	MANIFOLD EXHAUST (MACHINED)
35	0E9930	1	HEAT SHIELD EXHAUST MANIFOLD
36	049821	3	SCREW SHC M8-1.25 X 30 G12.9
37	0E9747	1	STARTER 12 VOLT
38	047411	4	SCREW HHC M6-1.0 X 16 G8.8
39	022473	8	WASHER FLAT 1/4-M6 ZINC
40	045772	2	NUT HEX M10-1.5 G8 YEL CHR
41	064416	2	SCREW HHC M10-1.5 X 45 G8.8
42	0F0252	1	SPRING BUSHING
43	0E9868	1	ALTERNATOR D.C
44	0F0035	1	BRKT D.C. ALTERNATOR (MACHINED)
45	026082	1	SCREW HHC 3/8-16 X 2-1/4 G5
46	0E9928	1	TENSIONER D.C. ALTERNATOR
47	0F0383	1	HOSE 2.5L FORD COOLANT BY-PASS
48	035473	2	CLAMP HOSE #12 .50-1.25
49	0E9737	1	LOWER HOSE ADAPTER 2.5L FORD
50	0F0393	1	O-RING 1-3/16 X 1-7/16 X 1/8
51	045757	2	SCREW HHC M6-1.0 X 25 G8.8
52	069860C	1	HOSE OIL DRAIN ASSY 21"
53	048031J	1	HOSE CLAMP BAND 5/8"
54	043790	1	BARBED EL 90 3/8 NPT X 3/8
55	077456	1	ADAPTER M12-1.75 3/8 NPT
56	052677	1	WASHER NYLON .50 X .87 X .06
57	049813	1	NUT HEX M6 X 1.0 G8 YEL CHR
58	0E9738A	1	DIPSTICK TUBE 2.5L FORD
59	0F1132	1	COVER R/H SIDE ENGINE ADAPTOR
60	0F1133	1	COVER L/H SIDE ENGINE ADAPTOR
61 *	059355	8	SCREW SHC M10-1.50 X 50 G12.9
62	085296	3	SCREW HHC 1/4-20 X 1/2 SS
63	083896	3	WASHER LOCK 1/4-M6 SS
64	084929	3	WASHER FLAT 1/4 SS
65	027482	1	WASHER SHAKEPROOF EXT 5/16 STL
66	045771	REF	NUT HEX M8-1.25 G8 CLEAR ZINC
67	021991	1	EARTH STRAP
68	022129	REF	WASHER LOCK M8-5/16
69	052647	1	SCREW SHC M10-1.5 X 25 G12.9
70	0F4604	REF	FILTER 2.5L FORD OIL

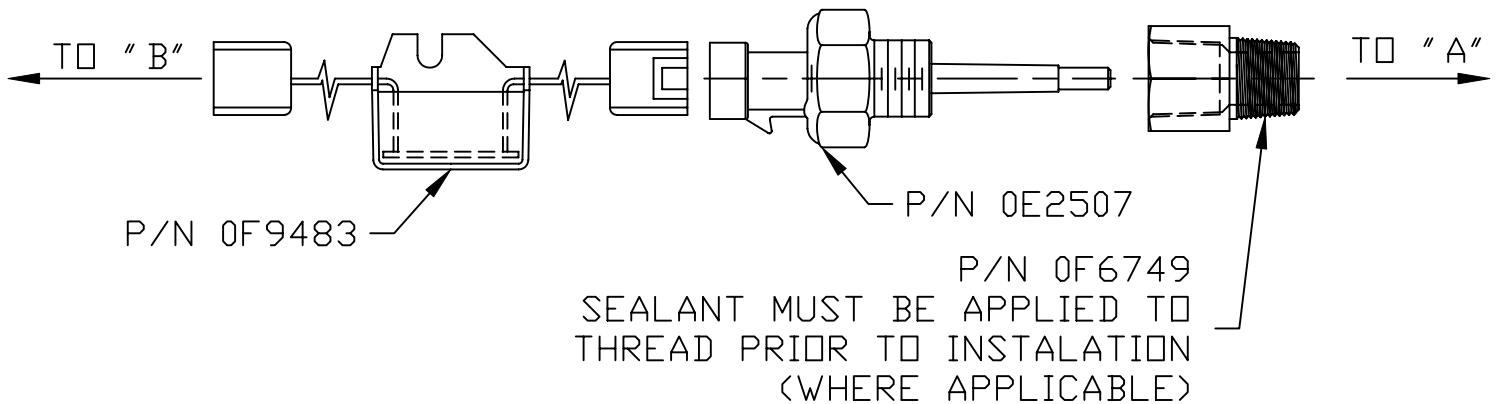
\* NOTE: TORQUE TO 44 FT/LBS.

# GROUP D



WIRING DIAGRAM FOR NEW COOLANT LEVEL SENSOR

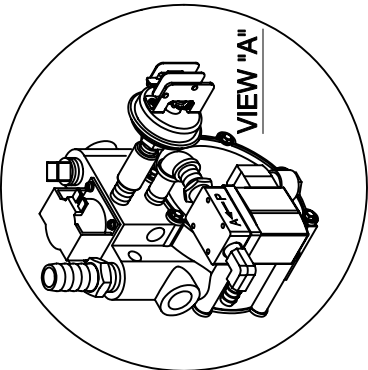
## MECHANICAL DIAGRAM FOR NEW COOLANT LEVEL SENSOR INSTALATION



"A" = EXISTING COOLANT LEVEL SENSOR LOCATION ON UNIT  
 "B" = EXISTING COOLANT LEVEL SENSOR WIRE HARNESS CONNECTOR

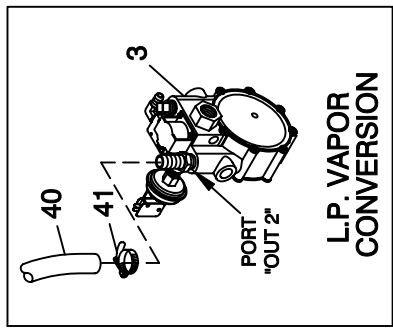
# BLANK PAGE

**GROUP E**

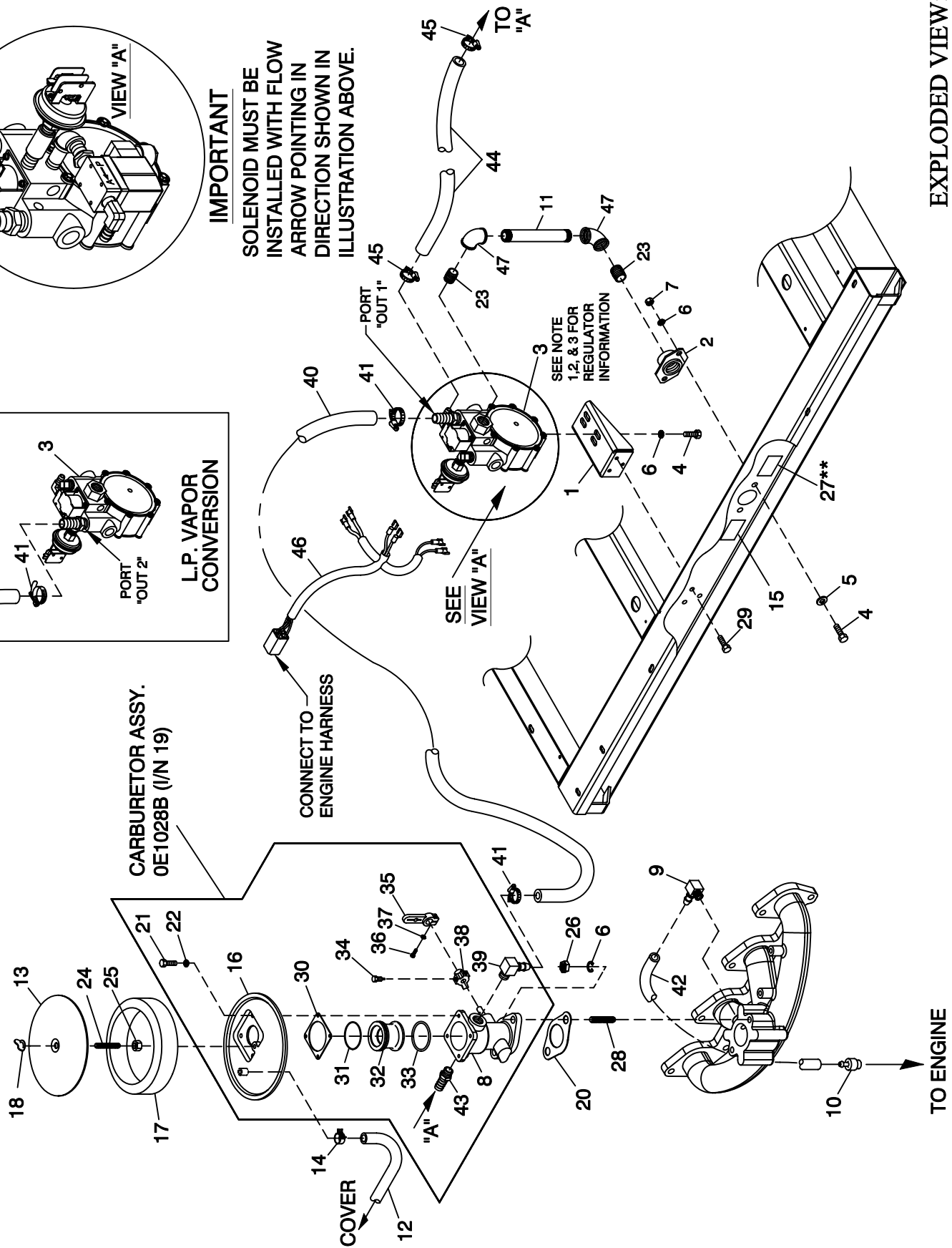


**IMPORTANT**

SOLENOID MUST BE  
INSTALLED WITH FLOW  
ARROW POINTING IN  
DIRECTION SHOWN IN  
ILLUSTRATION ABOVE.



CARBURETOR ASSY.  
0E1028B (I/N 19)



EXPLODED VIEW:  
NATURAL GAS FUEL OR LPV  
DRAWING #: 0F7440



## EXPLODED VIEW: NATURAL GAS FUEL OR LPV

DRAWING #: 0F7440

GROUP E

APPLICABLE TO: 2.5L FORD

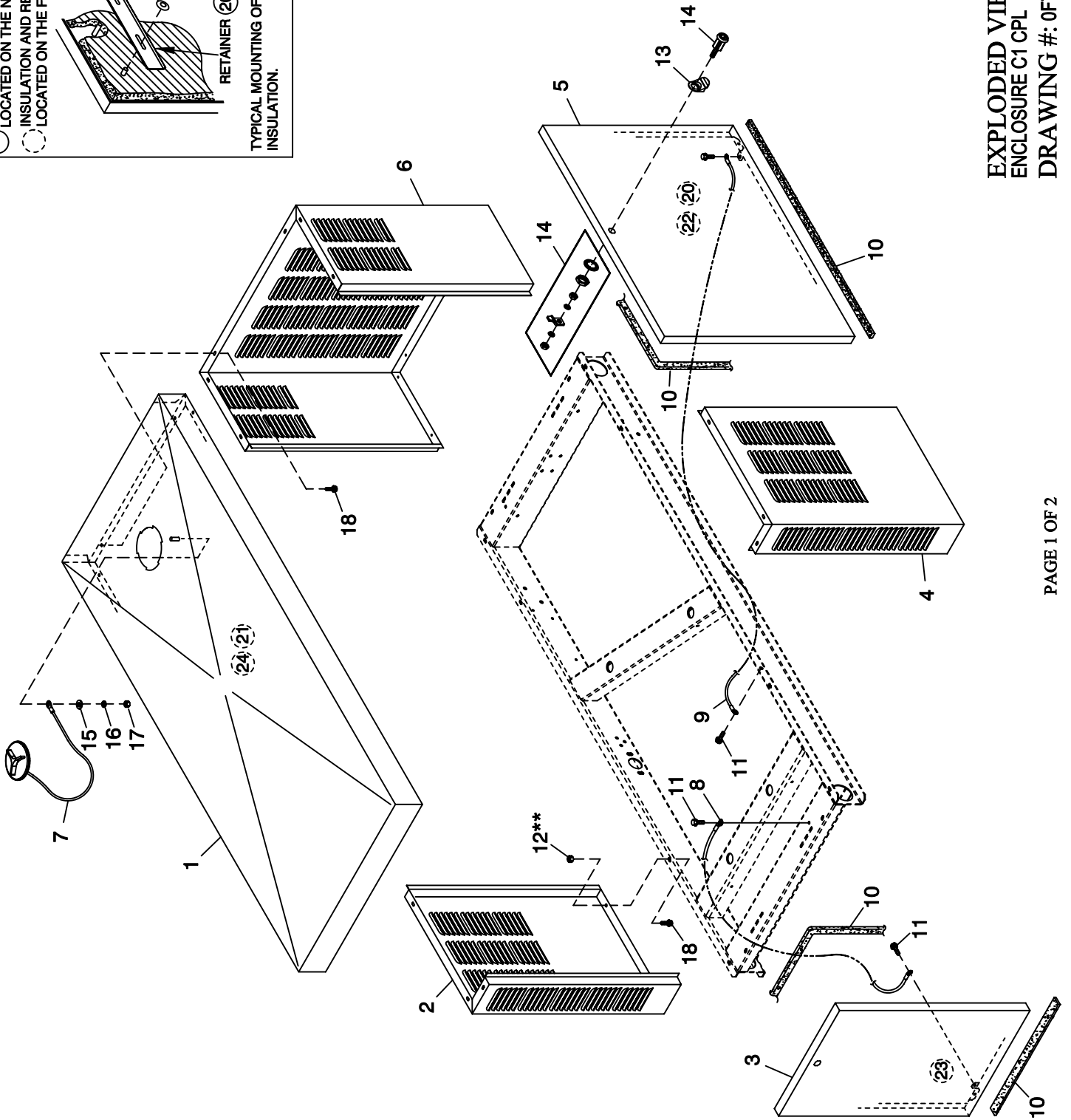
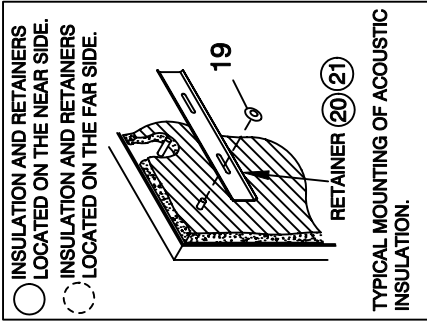
ITEM	PART #	QTY.	DESCRIPTION
1	0E8456	1	BRACKET FUEL REGULATOR
2	075580	1	FLANGE FUEL INLET
3	0F6364	1	FUEL REG. 2.5L FORD REWORK
4	039253	4	SCREW HHC M8-1.25 X 20 G8.8
5	022145	2	WASHER FLAT 5/16 ZINC
6	022129	6	WASHER LOCK M8-5/16
7	045771	2	NUT HEX M8-1.25 G8 YEL CHR
8*	0F1570	1	BODY CARBURETOR ASSEMBLY
9	0A6344	1	BARBED EL 90 1/8 NPT X 3/8
10	0F3994	REF.	PCV VALVE 2.5L FORD
11	026582	1	NIPPLE PIPE 3/4 NPT X 4" LG BI
12	0F0397	1	HOSE CRANKCASE BREATHER
13	0A5547	1	COVER AIR CLEANER
14	0C7649	1	CLAMP HOSE .38-.87
15	0D1509	1	DECAL INLET PRESSURE
16*	0E0591	1	ADAPTER CARB. TO AIR CLNR
17	059402	1	FILTER ELEMENT
18	037561	1	NUT WING 1/4-20 NYLK
19	0E1028B	1	CARBURETOR ASSY. 2.5L FORD
20	059401	1	CARBURETOR GASKET
21*	091526	4	SCREW PPHM M5-0.8 X 12 ZNC
22*	049226	4	WASHER LOCK M5
23	026915	2	NIPPLE CLOSE 3/4 X 1.375
24	062522	1	STUD TH 1/4-20 X 3 G2 ZNC FULL
25	022127	1	NUT HEX 1/4-20 STEEL
26	022259	2	NUT HEX 5/16-18 STEEL
27**	050279	1	DECAL FUEL INLET NG
	050280	1	DECAL FUEL INLET LPG
28	0A6125	2	STUD 5/16-18 X 1.25 F THR
29	0C2454	3	SCREW TH-FRM M6-1 X 16 N WA Z/JS
30*	0E1104	1	GASKET AIR CLEANER ADAPTER
31*	0E0668	1	O-RING 2-028 1.38 X 1.50 X .06
32*	0E0590A	1	VENTURI 20MM
33*	0C5133	1	O-RING 29.82 X 2.62
34*	0E0665	1	SCREW THROTTLE PIN STOP
35*	0E1108A	1	THROTTLE ARM REWORK 2.5L FORD
36*	033138	1	SCREW HHM #10-32 X 5/8
37*	022152	1	WASHER LOCK #10
38*	0E0645	1	LEVER, THROTTLE STOP
39*	034339	1	BARBED EL 90 3/8 NPT X 5/8
40	059194	1	HOSE 5/8 ID LPG & NG (24" LG)
41	057823	2	CLAMP HOSE #10 .56 - 1.06
42	0F0382	1	HOSE 3/8" 90 DEG 2.5L PVC
43*	089617	1	BARBED STR 1/4NPT X 1/4 MALE
44	030340	1	HOSE 1/4 ID SAE 30R7 (24" LG)
45	040173	2	CLAMP HOSE #5.5 .62-.62
46	0F6155	1	HARNES FUEL JUMPER SINGLE REG
47	026812	2	ELBOW 90D 3/4 NPT

\* INCLUDED IN ITEM 19 (CARBURETOR ASSY)

## NOTES:

- REGULATOR (I/N 3) AS SHOWN IN ILLUSTRATION IS SET UP FOR NATURAL GAS APPLICATION.
- TO CONFIGURE REGULATOR FOR LP VAPOR, SWITCH HOSE BARB, HOSE CLAMP (I/N 41) AND HOSE (I/N 40) FROM "OUT-1" TO "OUT-2". REPLACE PIPE PLUG FROM "OUT-2" TO "OUT-1". USE PIPE SEALANT ON HOSE BARB AND PIPE PLUG. MAKE SURE TO KEEP PORTS FREE FROM DEBRIS DURING RECONFIGURATION PROCESS.
- \*\* FOR LP VAPOR APPLICATION SUBSTITUTE LPG FUEL INLET DECAL P/N 050280 FOR NG FUEL INLET DECAL P/N 050279 (ITEM 27).
- WHEN SWITCHING FUEL TYPES, THE PROPER DIP SWITCH SETTINGS MUST BE MADE TO THE CONTROL PANEL. SEE OWNERS MANUAL, FUEL SECTION FOR MORE DETAILS.

# GROUP F



EXPLODED VIEW:  
 ENCLOSURE C1 CPL  
 DRAWING #: 0F7356

**EXPLODED VIEW: ENCLOSURE C1 CPL**

**DRAWING #: 0F7356**

**GROUP F**

**APPLICABLE TO:**

<b>ITEM</b>	<b>PART #</b>	<b>QTY.</b>	<b>DESCRIPTION</b>
1	0F7003 (XX)	1	ROOF C1 CPL
2	0F7004 (XX)	1	CORNER POST LH SIDE C1 CPL
3	0F7008 (XX)	1	DOOR REAR C1 CPL
4	0F7005 (XX)	1	CORNER POST RH SIDE C1 CPL
5	0F7007 (XX)	2	DOOR LH & RH SIDE C1 CPL
6	0F7006 (XX)	1	DUCT FRONT DISCHARGE C1 CPL
7	0C2634A	1	ASSEMBLY COVER ACCESS
8	0912970091	1	ASSY WIRE 14AWG 13.8" GRN/YEL
9	0912970090	2	ASSY WIRE 14AWG 33.5" GRN/YEL
10	0E5968	1	GASKET EXTRUDED TRIM (356" LG)
11	0E3257	6	SCREW HWHTF M6-1.0 X 16
12 **	077992	18	NUT HEX LOCK M6-1.0 SS NY INS
13	0F5049	3	TAB PULL
14	0F5048	3	LATCH VISE ACTION 5/16 HEX SKT
15	022473	1	WASHER FLAT 1/4-M6 ZINC
16	022097	1	WASHER LOCK M6-1/4
17	022127	1	NUT HEX 1/4-20 STEEL
18	0C2454	24	SCREW THF M6-1 X 16 N WA Z/JS
19	078115	20	WASHER SELF LOCKING DOME
20	0F3890B	2	RETAINER INSULATION (820)
21	0F3890	4	RETAINER INSULATION (450)
22	0F7365	2	INSULATION SIDE DOOR C1
23	0F7365B	1	INSULATION REAR DOOR C1 CPL
24	0F7365A	1	INSULATION ROOF C1 CPL

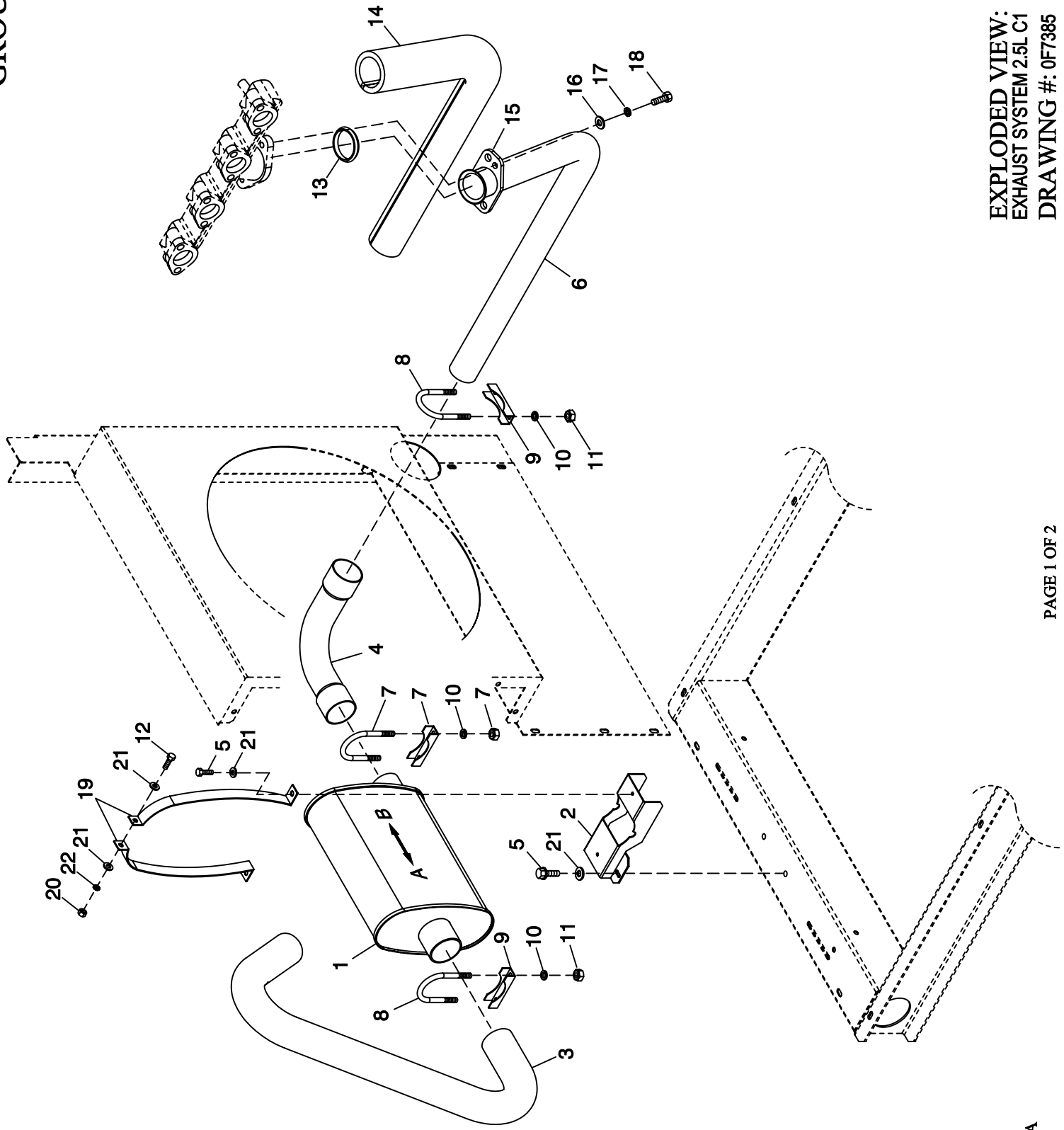
**OPTIONAL COMPARTMENT MATERIALS:**

ALL P/N'S WITH AN (XX) SUFFIX INDICATE A MULTIPLE MATERIAL AND COLOR OPTION.  
USE THE FOLLOWING LEGEND TO IDENTIFY THE CORRECT PART NUMBER:

<b>PART NO.</b>	<b>MATERIAL</b>	<b>COLOR</b>
0XXXXXSN	STEEL	TAN
0XXXXXAN	ALUMINUM	TAN
0XXXXXSG	STEEL	GRAY
0XXXXXAG	ALUMINUM	GRAY

\*\* ALUMINUM ENCLOSURE NOTE: ALL ENCLOSURE PANELS THAT FASTEN TO THE BASE FRAME MUST BE SECURED USING ITEM 18 & 11 THREAD FORMING FASTENER AND ITEM 12 LOCK NUT. LOCK NUT IS TO BE INSTALLED AFTER THREAD FORMING FASTENER HAS PENETRATED THROUGH EXTRUSIONS IN ENCLOSURE PANELS. ALL ROOF PANELS ARE TO BE SECURED IN THE SAME MANNER.

GROUP F



**EXPLODED VIEW: EXHAUST SYSTEM 2.5L C1****DRAWING #: 0F7385****GROUP F****APPLICABLE TO:**

<b>ITEM</b>	<b>PART #</b>	<b>QTY.</b>	<b>DESCRIPTION</b>
1	0F7366	1	MUFFLER C1
2	0F7647	1	MUFFLER SADDLE
3	0F8095	1	PIPE EXHAUST OUTLET
4	0F7172	1	PIPE EXH INLET MFLR SIDE 2.5L
5	0E3257	4	SCREW HWHTF M6-1.0 X 16
6	0F7382	1	PIPE EXH INLET MANIFLD SIDE 2.5
7	0C6119	1	BOLT U 5/16-18 X 2-1/4
8	036434	2	BOLT U 5/16-18 X 2.09
9	036449	2	SADDLE 2 INCH
10	022129	6	WASHER LOCK M8-5/16
11	022259	4	NUT HEX 5/16-18 STEEL
12	038750	3	SCREW HHC M6-1.0 X 30 G8.8
13	044149	1	GASKET EXHAUST RING
14	0E0170A	1	EXHAUST BLANKET 988MM
15	0E8816	1	FLANGE EXHAUST 2" PIPE
16	022131	2	WASHER FLAT 3/8-M10 ZINC
17	085917	2	WASHER LOCK 3/8 SS
18	0D2611	2	SCREW HHC 3/8-16 X 1-3/4 SS
19	0F7644	2	MUFFLER STRAP
20	049813	1	NUT HEX M6 X 1.0 G8 YEL CHR
21	022473	6	WASHER FLAT 1/4-M6 ZINC
22	022097	1	WASHER LOCK M6-1/4