



Owner's Manual

Liquid-cooled, Prepackaged
Standby Generators

Model Number: 004988-4
27kW NG, 30kW LP Vapor



This manual should remain with the unit.

—▲ CAUTION ▲—

**ONLY QUALIFIED ELECTRICIANS OR CONTRACTORS
SHOULD ATTEMPT INSTALLATION!!**

INTRODUCTION

Thank you for purchasing this model of the standby generator set.

Every effort was expended to make sure that the information and instructions in this manual are both accurate and current at the time the manual was written. However, the manufacturer reserves the right to change, alter or otherwise improve this product(s) at any time without prior notice.

◆ READ THIS MANUAL THOROUGHLY

If any portion of this manual is not understood, contact the nearest Authorized Service Dealer for starting, operating and servicing procedures.

Throughout this publication, and on tags and decals affixed to the generator, DANGER, WARNING, CAUTION and NOTE blocks are used to alert personnel to special instructions about a particular service or operation that may be hazardous if performed incorrectly or carelessly. Observe them carefully. Their definitions are as follows:



After this heading, read instructions that, if not strictly complied with, will result in personal injury or property damage.



After this heading, read instructions that, if not strictly complied with, may result in personal injury or property damage.




After this heading, read instructions that, if not strictly complied with, could result in damage to equipment and/or property.

NOTE:

After this heading, read explanatory statements that require special emphasis.


These safety warnings cannot eliminate the hazards that they indicate. Common sense and strict compliance with the special instructions while performing the service are essential to preventing accidents.

Four commonly used safety symbols accompany the DANGER, WARNING and CAUTION blocks. The type of information each indicates is as follows:

 This symbol points out important safety information that, if not followed, could endanger personal safety and/or property of others.

 This symbol points out potential explosion hazard.

 This symbol points out potential fire hazard.

 This symbol points out potential electrical shock hazard.

The operator is responsible for proper and safe use of the equipment. The manufacturer strongly recommends that the operator read this Owner's Manual and thoroughly understand all instructions before using this equipment. The manufacturer also strongly recommends instructing other users to properly start and operate the unit. This prepares them if they need to operate the equipment in an emergency.

◆ OPERATION AND MAINTENANCE

It is the operator's responsibility to perform all safety checks, to make sure that all maintenance for safe operation is performed promptly, and to have the equipment checked periodically by an Authorized Service Dealer. Normal maintenance service and replacement of parts are the responsibility of the owner/operator and, as such, are not considered defects in materials or workmanship within the terms of the warranty. Individual operating habits and usage contribute to the need for maintenance service.

Proper maintenance and care of the generator ensures a minimum number of problems and keep operating expenses at a minimum. See the Authorized Service Dealer for service aids and accessories.

Operating instructions presented in this manual assume that the standby electric system has been installed by an Authorized Service Dealer or other competent, qualified contractor. Installation of this equipment is not a "do-it-yourself" project.

◆ HOW TO OBTAIN SERVICE

When the generator requires servicing or repairs, contact an Authorized Service Dealer for assistance. Service technicians are factory-trained and are capable of handling all service needs.

When contacting an Authorized Service Dealer about parts and service, always supply the complete model number of the unit as given on the front cover of this manual or on the DATA LABEL affixed to the unit.

AUTHORIZED SERVICE DEALER LOCATION

To locate the nearest AUTHORIZED SERVICE DEALER, please call this number:

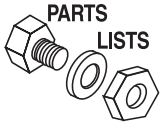
1-800-333-1322

OR

Locate us on the web at:

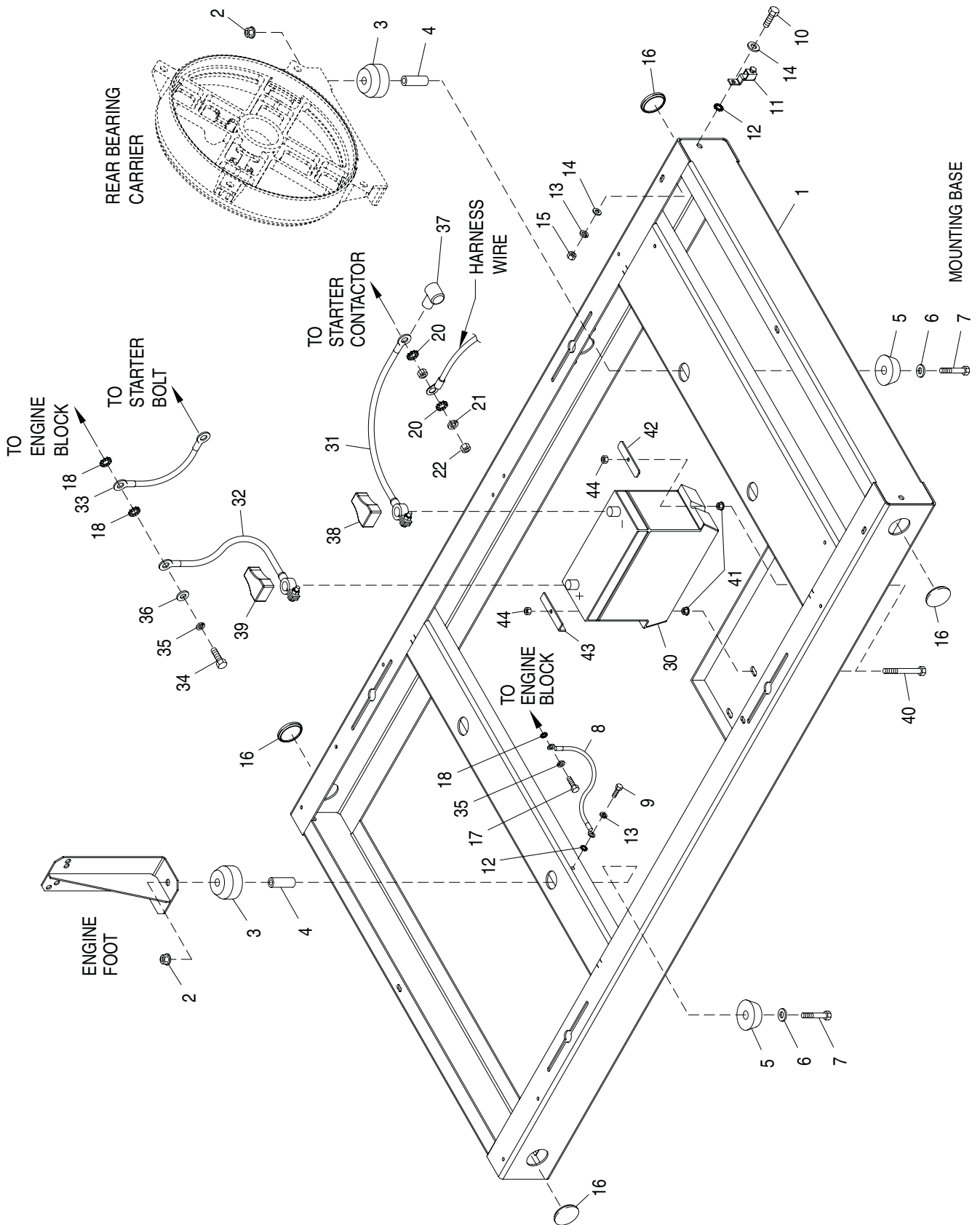
www.generac.com

| | |
|--|---|
| INTRODUCTION IFC | |
| SAFETY RULES 2 | |
| Section 1 — GENERAL INFORMATION..... 4 | Section 3 — OPERATION..... 12 |
| 1.1 Generator 4 | 3.1 Using a Standard “GTS” Transfer Switch 12 |
| 1.2 Transfer Switch..... 4 | 3.2 Control Console Components..... 13 |
| 1.3 Automatic System Operation..... 4 | 3.3 Manual Transfer and Startup..... 14 |
| 1.4 Generator AC Connection Systems..... 4 | 3.4 Engine Governor Adjustments 14 |
| 1.5 Main Circuit Breaker..... 4 | 3.5 Retransfer and Shutdown 14 |
| 1.6 Generator Fuel System..... 5 | 3.6 Automatic Operation 14 |
| 1.7 Engine Protective Devices 5 | 3.7 Weekly Exercise Cycle 15 |
| 1.8 Unpacking..... 6 | Section 4 — MAINTENANCE..... 15 |
| 1.9 Lifting the Generator 6 | 4.1 Maintenance Performed by Authorized Service Facilities..... 15 |
| 1.10 Specifications 7 | 4.2 Cooling System..... 15 |
| 1.11 Fuel Consumption 7 | 4.3 Overload Protection for Engine DC Electrical System..... 16 |
| 1.12 Reconfiguring the Fuel System 7 | 4.4 Checking Fluid Levels 16 |
| 1.13 Torque Specifications 8 | 4.5 Maintenance Owner/Operator Can Perform..... 16 |
| 1.14 Engine Oil Recommendations 8 | 4.6 Miscellaneous Maintenance 18 |
| 1.15 Coolant Recommendations..... 8 | 4.7 Scheduled Maintenance..... 20 |
| 1.16 Before Installation 8 | Section 5 — TROUBLESHOOTING 23 |
| Section 2 — INSTALLATION..... 8 | Section 6 — NOTES..... 24 |
| 2.1 Standby Generator Installation 8 | Section 7 — INTALLATION DIAGRAM..... 25 |
| 2.2 Generator Location 9 | Section 8 — ELECTRICAL DATA 26 |
| 2.3 Generator Mounting and Support 9 | Section 9 — EXPLODED VIEWS AND PARTS LISTS 30 |
| 2.4 Basic Standby Electric System..... 9 | Section 10 — WARRANTY Back Cover |
| 2.5 Emergency Circuit Isolation Method 10 | |
| 2.6 Total Circuit Isolation Method..... 10 | |
| 2.7 Grounding the Generator 10 | |
| 2.8 Generator AC Neutral Connections 10 | |
| 2.9 Transfer Switch Start Signal Connections..... 10 | |
| 2.10 Battery Installation..... 11 | |
| 2.11 Preparation Before Start-Up..... 11 | |

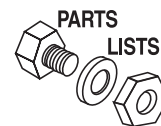


Section 9 - Exploded Views and Parts

Liquid-cooled 30 kW Generators
Mounting Base – Drawing No. 0E6266-F

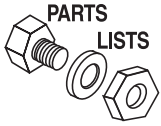


Section 9 - Exploded Views and Parts
Liquid-cooled 30 kW Generators
Mounting Base – Drawing No. 0E6266-F



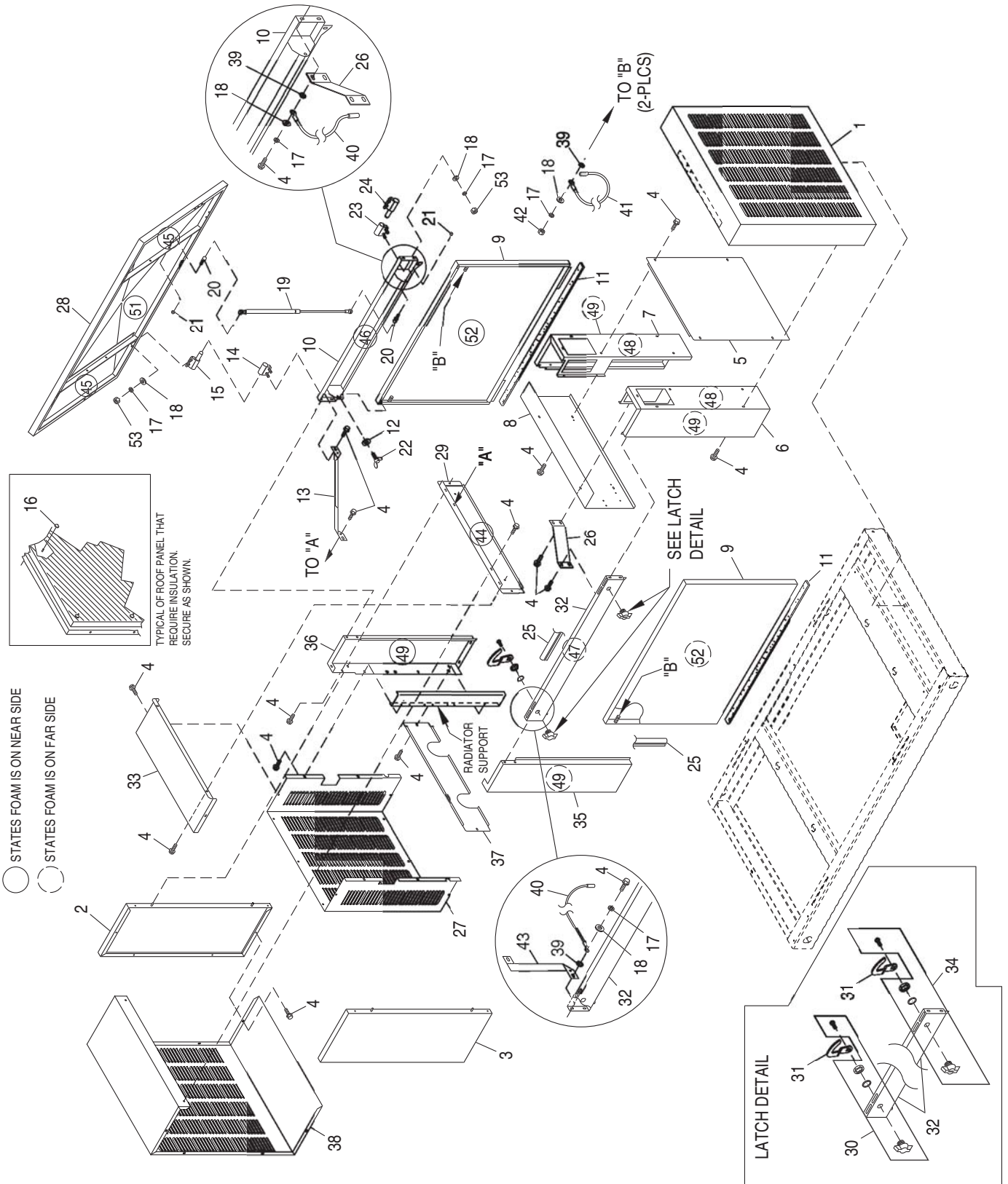
| ITEM | PART NO. | QTY. | DESCRIPTION |
|------|------------|------|----------------------------------|
| 1 | 0E5822 | 1 | BASEFRAME, WELDMENT 3.0L FORD |
| 2 | 052860 | 4 | NUT FLANGED HEX M12-1.75 |
| 3 | 052251 | 4 | DAMPENER VIBRATION 40 BLUE |
| 4 | 052257 | 4 | SPACER .49 X .62 X 1.87 PWDR/ZNC |
| 5 | 052252 | 4 | DAMPENER VIBRATION |
| 6 | 052259 | 4 | WASHER FLAT M12 |
| 7 | 052891 | 4 | SCREW HHC M12-1.75 X 80 G8.8 |
| 8 | 0536210213 | 1 | ASSY GRNDWIRE 11"/3/8 & 5/16 LUG |
| 9 | 074906 | 1 | SCREW HHTT M6-1.0 X 20 BP |
| 10 | 047411 | 1 | SCREW HHC M6-1.0 X 16 BP |
| 11 | 055414 | 1 | LUG SLDLSS #2-#8 X 17/64 CU |
| 12 | 026850 | 2 | WASHER SHAKEPROOF EXT 1/4 STL |
| 13 | 022097 | 1 | WASHER LOCK M6-1/4 |
| 14 | 022473 | 2 | WASHER FLAT M6-1/4 ZINC |
| 15 | 049813 | 1 | NUT HEX M6 -1.0 G8 YEL CHR |
| 16 | 0A1694 | 4 | 1-1/2" BUTTON PLUG |
| 17 | 052213 | 1 | SCREW HHC M10-1.25 X 20 G8.8 |
| 18 | 025507 | 3 | WASHER SHAKEPROOF EXT 7/16 STL |
| 20 | 027482 | 2 | WASHER SHAKEPROOF EXT 5/16 STL |
| 21 | 022129 | 1 | WASHER LOCK M8-5/16 |
| 22 | 045771 | 1 | NUT HEX M8-1.25 G8 YEL CHR |
| 23 * | 051756 | 1 | SCREW HHC M10-1.5 X 20 G8.8 |
| 24 * | 046526 | 1 | WASHER LOCK M10 |
| 25 * | 022131 | 1 | WASHER FLAT 3/8-M10 ZINC |
| 26 * | 055934M | 1 | CLAMP VINYL .75 X .343 Z |
| 30 | 077483 | REF. | BATT 12VDC 75-AH 26 |
| | 058665 | REF. | BATT 12VDC 90-AH 27F |
| 31 | 038804D | 1 | CABLE BATT RED #4 X 20.00 |
| 32 | 038805AA | 1 | CABLE BATT BLK #4 X 30" |
| 33 | 021991 | 1 | EARTH STRAP |
| 34 | 049814 | 1 | SCREW HHC M10-1.5 X 25 G8.8 |
| 35 | 046526 | 2 | WASHER LOCK M10 |
| 36 | 022131 | 1 | WASHER FLAT 3/8 ZINC |
| 37 | 075763 | 1 | BOOT BATTERY CABLE |
| 38 | 050331 | 1 | BATTERY POST COVER BACLK - |
| 39 | 050331A | 1 | BATTERY POST COVER RED + |
| 40 | 0A4010 | 2 | SCREW HHC M8-1.25 X 60 G8.8 FT |
| 41 | 052858 | 2 | NUT TOP LOCK FL M8-1.25 |
| 42 | 061902 | 1 | HOLD DOWN BATTERY |
| 43 | 059473 | 1 | HOLD DOWN BATTERY |
| 44 | 049820 | 2 | NUT HEX LOCK M8-1.25 NY INS |

* NOT SHOWN-USED TO HOLD DOWN I/N 32



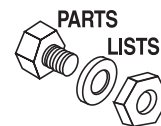
Section 9 - Exploded Views and Parts

Liquid-cooled 30 kW Generators
Enclosure – Drawing No. 0F1142-B



Section 9 - Exploded Views and Parts

Liquid-cooled 30 kW Generators
Enclosure – Drawing No. 0F1142-B

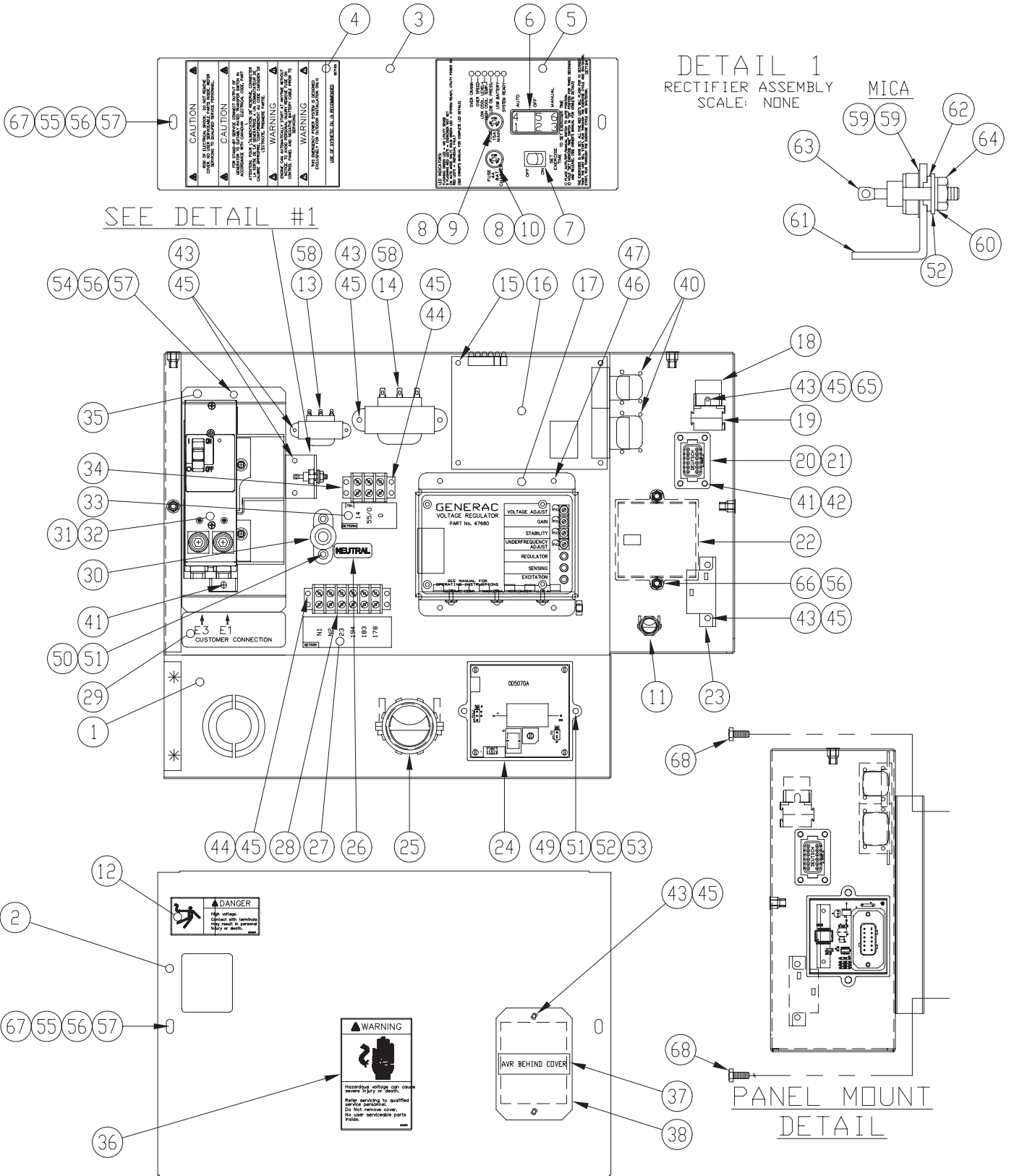


| ITEM | PART NO. | QTY. | DESCRIPTION |
|------|------------|------|---|
| 1 | 0E8411 | 1 | INTAKE DUCT HSB |
| 2 | 0E8042 | 1 | DUCT DISCHARGE RH FRONT |
| 3 | 0E8041 | 1 | DUCT DISCHARGE LH FRONT |
| 4 | 0C2454 | 62 | SCREW TH-FRM M6-1 X 16 N WA Z/JS |
| 5 | 0E8402 | 1 | BAFFLE REAR BOTTOM |
| 6 | 0E7808 | 1 | POST CORNER LH REAR |
| 7 | 0E7809 | 1 | POST CORNER RH REAR |
| 8 | 0E8387 | 1 | BAFFLE REAR TOP |
| 9 | 0E6986 | 2 | DOOR COMPARTMENT SIDE |
| 10 | 0F5552 | 1 | SUPPORT R/H SIDE |
| 11 | 089961 | 2 | FOAM STRIP 3/4" WIDE X 3/16" THK (40" LG) |
| 12 | 0A2115 | 4 | WASHER NYLON .257 |
| 13 | 0E8404 | 1 | BRACKET STIFFENER RH FRONT |
| 14 | 0D2538A | 1 | HINGE LIFT OFF TYPE B KNUCKLE |
| 15 | 0D2538 | 1 | HINGE LIFT OFF TYPE B PIN |
| 16 | 078115 | 8 | WASHER SELF LOCKING DOME |
| 17 | 022097 | 12 | WASHER LOCK M6-1/4 |
| 18 | 022473 | 12 | WASHER FLAT 1/4-M6 ZINC |
| 19 | 0E7570 | 2 | GAS SPRING |
| 20 | 0E7571 | 4 | BALL STUD GAS SPRING MOUNT |
| 21 | 070015 | 4 | NUT HEX 5/16-18 LOCK |
| 22 | 0E7662 | 4 | SCREW WING M6-1.00 X 25 |
| 23 | 0D2537A | 1 | HINGE LIFT OFF TYPE A KNUCKLE |
| 24 | 0D2537 | 1 | HINGE LIFT OFF TYPE A PIN |
| 25 | 0D2023 | 3 | GASKET CLIP-ON SELF GRIPPING (84" LG) |
| 26 | 0E7869 | 2 | BRACKET STIFFENING BACK |
| 27 | 0E8001 | 1 | MUFFLER BOX |
| 28 | 0F5551 | 1 | ROOF, W/SHOCK MOUNT |
| 29 | 0E8406 | 1 | BRACE FRONT TOP |
| 30 | 0D3037A | 1 | LATCH 1/4 TURN NONLOCKING |
| 31 | 0C7781 | 2 | PAWL DOOR HSB |
| 32 | 0E7794 | 1 | SUPPORT LH SIDE |
| 33 | 0E8052 | 1 | MUFFLER BOX TOP |
| 34 | 0D3037 | 1 | LATCH QUARTER TURN LOCKING |
| 35 | 0E8007 | 1 | POST CORNER LH FRONT |
| 36 | 0E8008 | 1 | POST CORNER RH FRONT |
| 37 | 0F1130 | 1 | BRACE, FRONT BOT 3.0L FD STEEL |
| 38 | 0E8055 | 1 | DUCT DISCHARGE MID FRONT |
| 39 | 026850 | 4 | WASHER SHAKEPROOF EXT 1/4 STL |
| 40 | 0912970063 | 2 | ASSY WIRE 14AWG 7.5 #0 GRN/YEL |
| 41 | 0912970064 | 2 | ASSY WIRE 14AWG 7.5 #0 GRN/YEL |
| 42 | 049813 | 2 | NUT HEX M6 X 1.0 G8 YEL CHR |
| 43 | 0E8665 | 1 | BRACKET STIFFENER LH FRONT |
| 44 | 0E7829U | 2 | AI BRACE PANEL |
| 45 | 0E7829N | 2 | AI ROOF PANEL 2 |
| 46 | 0E7829T | 1 | AI SUPPORT RH PANEL |
| 47 | 0E7829S | 1 | AI SUPPORT LH PANEL |
| 48 | 0E7829R | 2 | AI CORNER POST PANEL 2 |
| 49 | 0E7829P | 4 | AI CORNER POST PANEL 1 |
| 50 * | 0E8441 | 1 | KIT INSULATION 3.0L HSB |
| 51 | 0E7829A | 1 | AI ROOF PANEL 1 |
| 52 | 0E7829B | 2 | AI DOOR PANEL |
| 53 | 043116 | 8 | SCREW HHC M6-1.0 X 12 G8.8 |

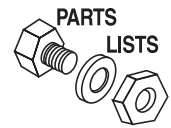
* ALL ITEMS NOTATED WITH "AI" ARE COMPONENTS OF 0E8441

Section 9 - Exploded Views and Parts

**Liquid-cooled 30 kW Generators
Control Panel – Drawing No. 0E7118-K**



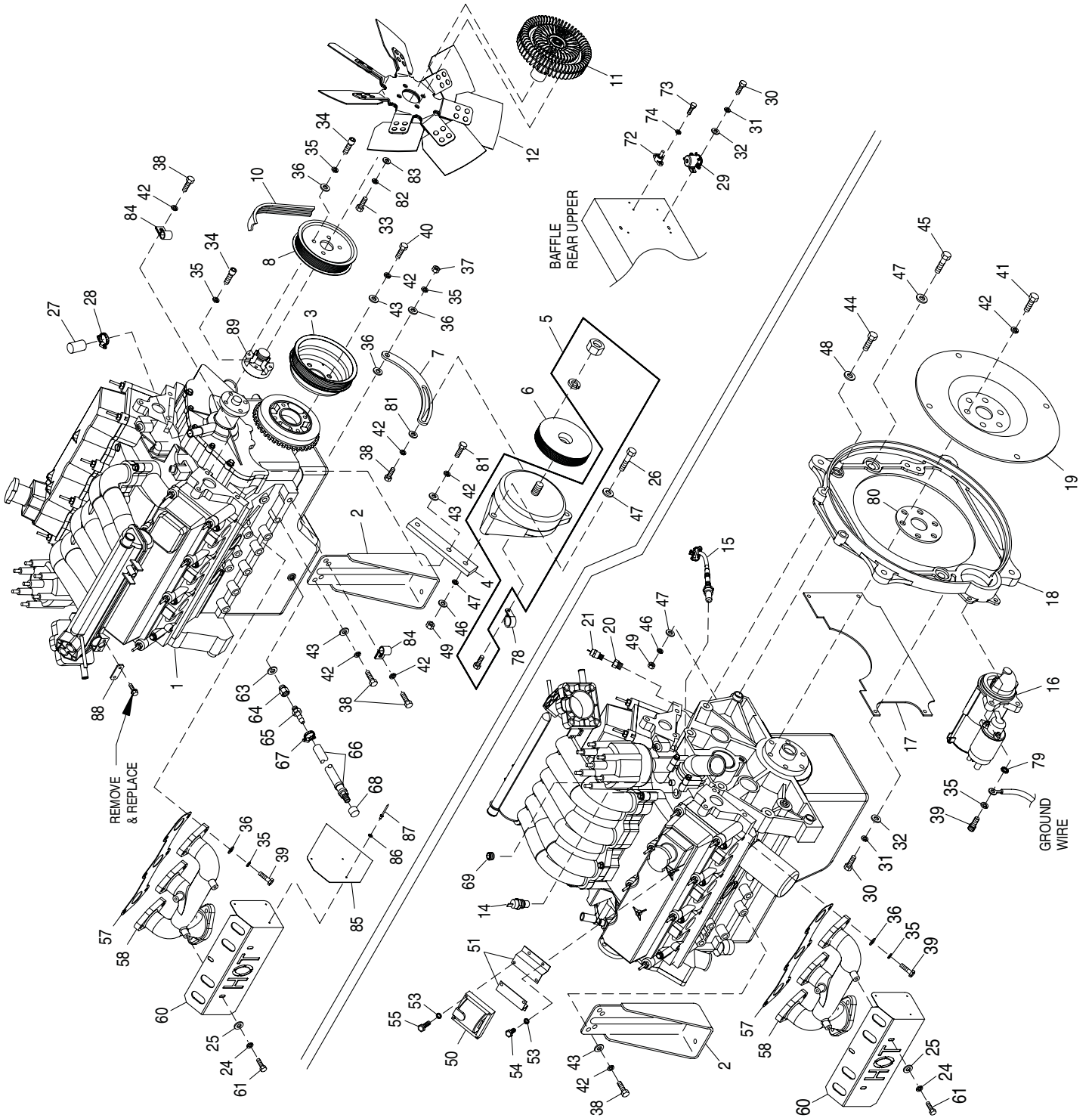
Section 9 - Exploded Views and Parts
Liquid-cooled 30 kW Generators
Control Panel – Drawing No. 0E7118-K



| ITEM | PART NO. | QTY. | DESCRIPTION | ITEM | PART NO. | QTY. | DESCRIPTION |
|------|----------|------|--------------------------------|------------------------------------|------------|------|-----------------------------------|
| 1 | 0E7195 | 1 | CONTROL BOX HSB | 37 | 0C1127 | 1 | DECAL AVR COVER |
| 2 | 0E7196 | 1 | COVER FRONT PANEL HSB | 38 | 0A1441B | 1 | COVER PLATE, AVR |
| 3 | 0E7197 | 1 | COVER TOP PANEL HSB | 39 | 0E7128 | 1 | HARNESS CNTRL PNL (NOT SHOWN) |
| 4 | 0E7193 | 1 | DECAL WARNINGS HSB | | | | |
| 5 | 0E7194 | 1 | DECAL CONTROLS HSB | 40 | 0E7358 | 8 | SCREW PPPH HI-LO #4-24 X 3/8 |
| 6 | 0E4494 | 1 | SWITCH ROC DPDT ON-OFF-ON | 41 | 074908 | 6 | SCREW HHTT M5-0.8 X 10 BP |
| 7 | 082573 | 1 | SWITCH ROCKER DPST 125V SPD | 42 | 0C5141 | 1 | CONN DEUTSCH GASKET 8/12 POS DT |
| 8 | 032300 | 2 | HOLDER FUSE | | | | |
| 9 | 022676 | 1 | FUSE 15A X AGC15 | 43 | 0C2699 | 11 | SCREW PHTT #6-32 X 3/8 ZYC |
| 10 | 067682B | 1 | FUSE 4A SLO BLO GLASS | 44 | 0C2323 | 4 | SCREW PHTT #6-32 X 5/8 ZYC |
| 11 | 060015 | 1 | FITTING CONDUIT 90D 3/8" | 45 | 022155 | 15 | WASHER LOCK #6 |
| 12 | 054199 | 1 | DECAL DANGER HIGH VOLTAGE | 46 | 0C2265 | 4 | SCREW PHTT M4-0.7 X 12 ZYC |
| 13 | 0C2657 | 1 | TRANSFRMR 16V 6VA | 47 | 022264 | 4 | WASHER LOCK #8-M4 |
| 14 | 099076 | 1 | TRANSFORMER 16V 56VA | 49 | 020911 | 2 | SCREW PPHM M5-0.8 X 30 ZINC |
| 15 | 040213 | 2 | PCB SUPPORT SNAP-IN 1/4" | 50 | 066849 | 2 | SCREW HHTT M5-0.8 X 16 |
| 16 | 0E9668 | 1 | ASSY PCB HSB CONTROLLER | 51 | 022152 | 4 | WASHER LOCK #10 |
| 17 | 067680 | 1 | ASSY VOLTAGE REGULATOR 60HZ | 52 | 023897 | 3 | WASHER FLAT #10 ZINC |
| 18 | 0E6875A | 1 | RELAY 12VDC C FORM W/DIODE | 53 | 051716 | 2 | NUT HEX M5-0.8 G8 YEL CHR |
| 19 | 0E6881 * | REF. | SOCKET RELAY | 54 | 090388 | 2 | SCREW HHTT M6-1.0 X 12 ZINC |
| 20 | 0C5139 * | REF. | CONN DEUTSCH RECEPT GY/FLN | 55 | 042568 | 4 | SCREW HHC M6-1.0 X 20 G8.8 |
| 21 | 0C5142 * | REF. | CONN DEUTSCH RECEPT WDGE BLKHD | 56 | 022097 | 8 | WASHER LOCK M6-1/4 |
| | | | | 57 | 022473 | 6 | WASHER FLAT 1/4-M6 ZINC |
| 22 | 0E3161 | 1 | ASSY BOSCH GOV DRIVER | 58 | 0441140187 | 2 | WIRE ASSY 3" X (2) 3/16" TABS |
| 23 | 054450 | 1 | CIRCT BRK 5.5 X 1 ETA 46-500-P | 59 | 070370 | 2 | WASHER MICA .203 |
| 24 | 0D5070A | 1 | ASSY 2A 12V UL BATTERY CHARGER | 60 | 023762 | 1 | WASHER SHAKEPROOF EXT #10 STL |
| 25 | 0E2514 | 1 | FITTING CONDUIT STR 1-1/2" | 61 | 055444 | 1 | HEATSINK |
| 26 | 0A9457 | 1 | DECAL NEUTRAL | 62 | 030468 | 1 | WASHER STEP NYLON .20 |
| 27 | 0E7539 | 1 | DECALCUSTOMER CNNCTN XFER SW | 63 | 049939 | 1 | RECTIFIER MSC 12A 600V 1N1206R |
| | | | | 64 | 022158 | 1 | NUT HEX #10-32 STEEL |
| 28 | 046357 * | REF. | BLOCK TERM 20A 6 X 6 X 1100V | 65 | 022985 | 1 | WASHER FLAT #6 ZINC |
| 29 | 0D3719B | 1 | DECAL CUSTOMER CNNCTN | 66 | 038750 | 2 | SCREW HHC M6-1.0 X 30 G8.8 |
| 30 | 057073 | 1 | JUNCTION BLOCK 3/8-16 | 67 | 0A2115 | 4 | WASHER NYLON .257 |
| 31 | 0E7283 | 1 | CB 0150A2P240V S QN2 LL | 68 | 0C2454 | 4 | SCREW THF M6-1 X 16 N WA Z/JS |
| | 0E3628 | 1 | CB 0200A2P240V S QN2 LL | 69 | 0F6146 | 1 | HANG TAG 2 WIRE START (NOT SHOWN) |
| 32 | 0E3664 | 1 | BASE QN CIRCUIT BREAKER | | | | |
| 33 | 0E7539A | 1 | DECAL TB1 HSB CONTROL PANEL | | | | |
| 34 | 0D4698 * | REF. | BLOCK TERM 20A 6 X 3 X 1100V | * ITEMS INCLUDED AS PART OF I/N 39 | | | |
| 35 | 0E7252 | 1 | BRACKET CB 221.5 X 102 | | | | |
| 36 | 0C1229 | 1 | DECAL WARNING ELECTRICAL SHOCK | | | | |

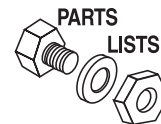
Section 9 - Exploded Views and Parts

**Liquid-cooled 30 kW Generators
Engine – Drawing No. 0F6836-B**



Section 9 - Exploded Views and Parts

Liquid-cooled 30 kW Generators
Engine – Drawing No. 0F6836-B



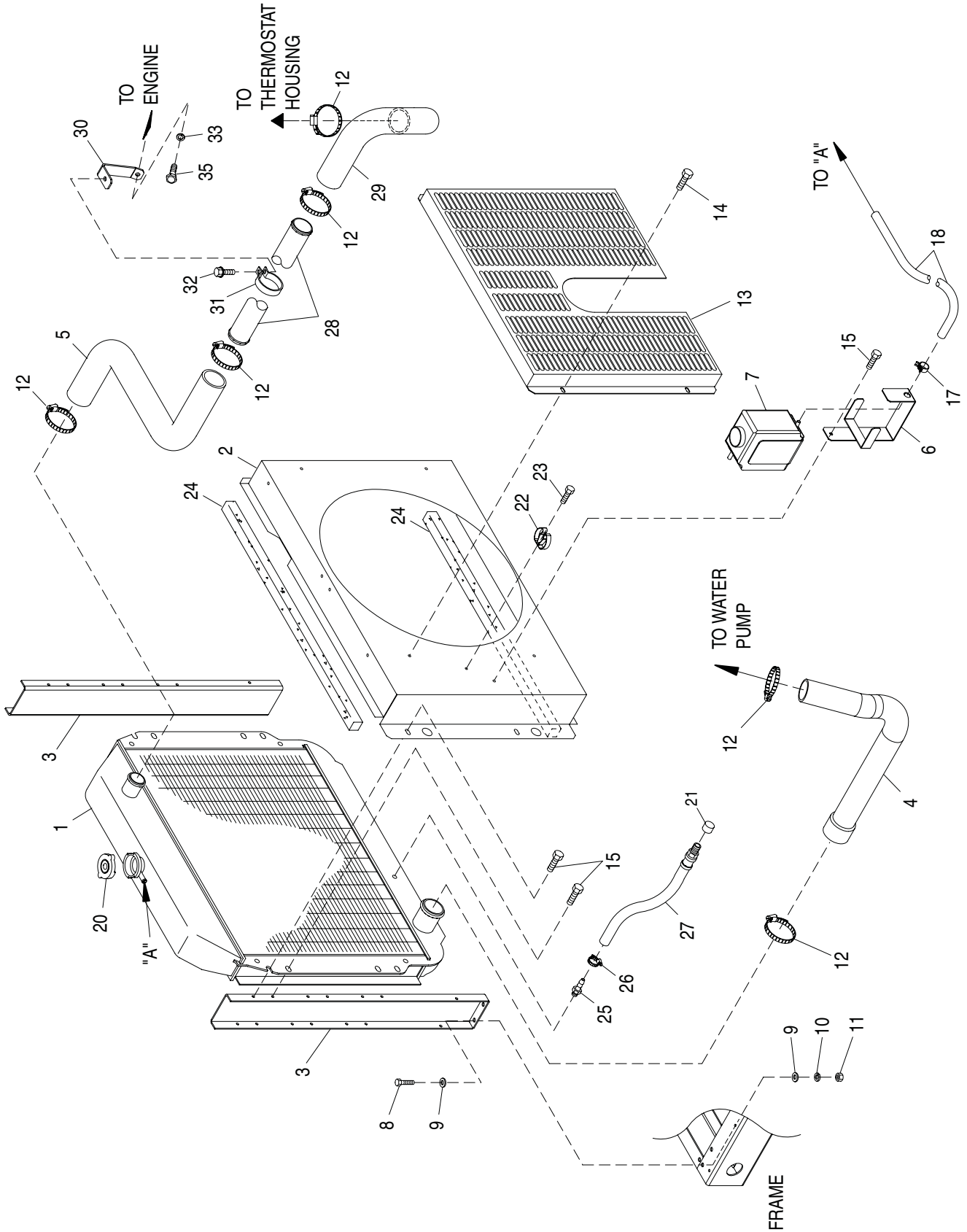
| ITEM | PART NO. | QTY. | DESCRIPTION | ITEM | PART NO. | QTY. | DESCRIPTION |
|------|----------|------|--|------|----------|------|---|
| 1 | 0E6201 | 1 | ENGINE 3.0L FORD (FD) (MAKE) | 47 | 049808 | 4 | WASHER FLAT M12 |
| 2 | 0E8824 | 2 | STAMPING ENG FOOT 3.0L FORD | 48 | 051430 | 4 | WASHER SHAKEPROOF INT 1/2 |
| 3 | 0E8963 | 1 | PULLEY CRANKSHAFT 3.0L FORD RD | 49 | 045773 | 3 | NUT HEX M12-1.75 G8 YEL CHR |
| 4 | 0E9020 | 1 | BRACKET DC ALT 3.0L FORD | 50 | 0E6203C | 1 | COIL IGNITION 3.0L FORD |
| 5 | 0A1232 | 1 | D.C. ALTERNATOR ASSY | 51 | 0E6679 | 2 | BRACKET IGN COIL 3.0L FORD |
| 6 | 0A7801B | 1 | PULLEY POLY-V 82 OD. | 53 | 049226 | 7 | WASHER LOCK M5 |
| 7 | 0A5610 | 1 | BRACKET ALTERNATOR | 54 | 091526 | 3 | SCREW PPHM M5-0.8 X 12 ZNC |
| 8 | 0E6308 | 1 | PULLEY WATERPUMP 3.0L FORD (RD) | 55 | 093278 | 4 | SCREW HHTT M5-0.8 X 25 BP |
| 9 ** | 0E7804 | 1 | HARN IGNITION 3.0L FORD (NOT SHOWN) | 56 | 0F7000 | 1 | HARN ENGINE 3.0L FORD HSB CAR (NOT SHOWN) |
| 10 | 0D3488F | 1 | BELT SERPENTINE 38.35 | 57 | 0E7163 | 2 | GASKET EXHAUST 3.0L FORD |
| 11 | 0E7996 | 1 | CLUTCH COOLING FAN FORD | 58 | 0E5527 | 2 | MANIFOLD EXHAUST 3.0L FORD |
| 12 | 0E8006 | 1 | FAN 18" 7 BLADE STEEL ECS | 60 | 0E7202 | 2 | HEAT SHIELD 260 X 80 HOT |
| 14 | 0A6751 | 1 | SWITCH HI-TEMP 245D X 3/8NPT | 61 | 085296 | 6 | SCREW HHC 1/4-20 X 1/2 SS |
| 15 | 0E0561 | 1 | ASSY WATER LEVEL SENSOR C/E PL | 62 | 0E6203D | 1 | WIRE SET 3.0L FORD (NOT SHOWN) |
| | 077043H | 1 | CONDUIT FLEX .25"ID (6"LG) (NOT SHOWN) | 63 | 057772 | 1 | WASHER NYLON .565 |
| 16 | 0E6729 | 1 | STARTER DELCO-REMY 12V | 64 | 057765 | 1 | ADAPTER M14-1.50 X 3/8 NPT |
| 17 | 0E6703 | 1 | COVER FLYWHEEL ACCESS 3.0L HSB | 65 | 055596 | 1 | BARBED STR 3/8NPT X 3/8 |
| 18 | 0E6667 | 1 | ENGINE ADAPTER 3L FORD | 66 | 069860C | 1 | HOSE OIL DRAIN ASSY 21" |
| 19 | 0E5048 | 1 | FLEXPLATE 3.0L FORD | 67 | 057822 | 2 | CLAMP HOSE #8 .53-1.00 |
| 20 | 035579 | 1 | BUSHING REDUCER 1/4 TO 1/8 | 68 | 069811 | 1 | CAP HEX 1/4 NPT BRASS |
| 21 | 0A8584 | 1 | SWITCH OIL PRESSURE 10PSI 2POL | 69 | 061012 | 1 | PLUG STD PIPE 1/8 SOCKET HEAD |
| 24 | 083896 | 6 | WASHER LOCK 1/4-M6 SS | 70 * | 065852 | 1 | SPRING CLIP HOLDER .37-.62 |
| 25 | 084929 | 6 | WASHER FLAT 1/4 SS | 71 * | 0A2111 | 1 | SCREW SWAGE 10-32 X 5/16 Z/YC |
| 26 | 055597 | 1 | SCREW HHC M12-1.75 X 85 G8.8 | 72 | 057073 | 1 | JUNCTION BLOCK 3/8-16 |
| 27 | 0F6151 | 1 | CAP RUBBER | 73 | 066849 | 2 | SCREW HHTT M5-0.8 X 16 |
| 28 | 057823 | 1 | CLAMP HOSE #10 .56-1.06 | 74 | 022152 | 2 | WASHER LOCK #10 |
| 29 | 056739 | 1 | RELAY SOLENOID 12VDC PNL MNT | 75 | 0E7880 | 2 | CLIP SPARK PLUG 3P |
| 30 | 047411 | 6 | SCREW HHC M6-1.0 X 16 G8.8 | 76 | 0E7880A | 4 | SCREWMOUNT (NOT SHOWN) |
| 31 | 022097 | 6 | WASHER LOCK M6-1/4 | 77 | 0E7880B | 1 | CLIP SPARK PLUG 2P |
| 32 | 022473 | 6 | WASHER FLAT 1/4-M6 ZINC | | | | SCREWMOUNT (NOT SHOWN) |
| 33 | 047411 | 4 | SCREW HHC M6-1.0 X 16 G8.8 | | | | CLIP SPARK PLUG 3P FREEHANG (NOT SHOWN) |
| 34 | 040976 | 8 | SCREW SHC M8-1.25 X 20 G12.9 | 78 | 055934C | 1 | CLAMP VINYL .5 X .406 Z |
| 35 | 022129 | 28 | WASHER LOCK M8-5/16 | 79 | 027482 | 1 | WASHER SHAKEPROOF EXT 5/16 STL |
| 36 | 022145 | 22 | WASHER FLAT 5/16-M8 ZINC | 80 | 0E8940 | 1 | SPACER FLEXPLATE HSB |
| 37 | 045771 | 1 | NUT HEX M8-1.25 G8 YEL CHR | 81 | 0A7387 | 2 | SCREW HHC M10-1.5 X 40 G10.9 |
| 38 | 049814 | 6 | SCREW HHC M10-1.5 X 25 G8.8 | 82 | 022097 | 4 | WASHER LOCK M6-1/4 |
| 39 | 049821 | 16 | SCREW SHC M8-1.25 X 30 G12.9 | 83 | 022473 | 4 | WASHER FLAT 1/4-M6 ZINC |
| 40 | 059980 | 4 | SCREW HHC M10-1.5 X 25 G10.9 | 84 | 055934H | 2 | CLAMP VINYL .62 X .406 Z |
| 41 | 0D5417 | REF. | SCREW HHC M10-1.0 X 25 G10.9 | 85 | 0F5966 | 1 | REFLECTIVE HEAT SHIELD 3.0L FD |
| 42 | 046526 | 18 | WASHER LOCK M10 | 86 | 022985 | 3 | WASHER FLAT #6 ZINC |
| 43 | 022131 | 11 | WASHER FLAT 3/8-M10 ZINC | 87 | 036261 | 3 | RIVET POP .125 X .275 SS |
| 44 | 059982 | 4 | SCREW SHC M12-1.75 X 45 G10.9 | 88 | 0F6658 | 1 | COVER EGR |
| 45 | 098780 | 2 | SCREW HHC M12-1.75 X 65 G8.8 | 89 | 0F6809 | 1 | ADAPTER, WATER PUMP |
| 46 | 051769 | 3 | WASHER LOCK M12 | | | | |

* NOT SHOWN-USED TO HOLD OIL DRAIN ASSEMBLY.

** NOT SHOWN

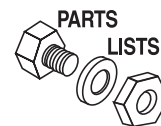
Section 9 - Exploded Views and Parts

**Liquid-cooled 30 kW Generators
Radiator – Drawing No. 0F6848-B**



Section 9 - Exploded Views and Parts

Liquid-cooled 30 kW Generators
Radiator – Drawing No. 0F6848-B

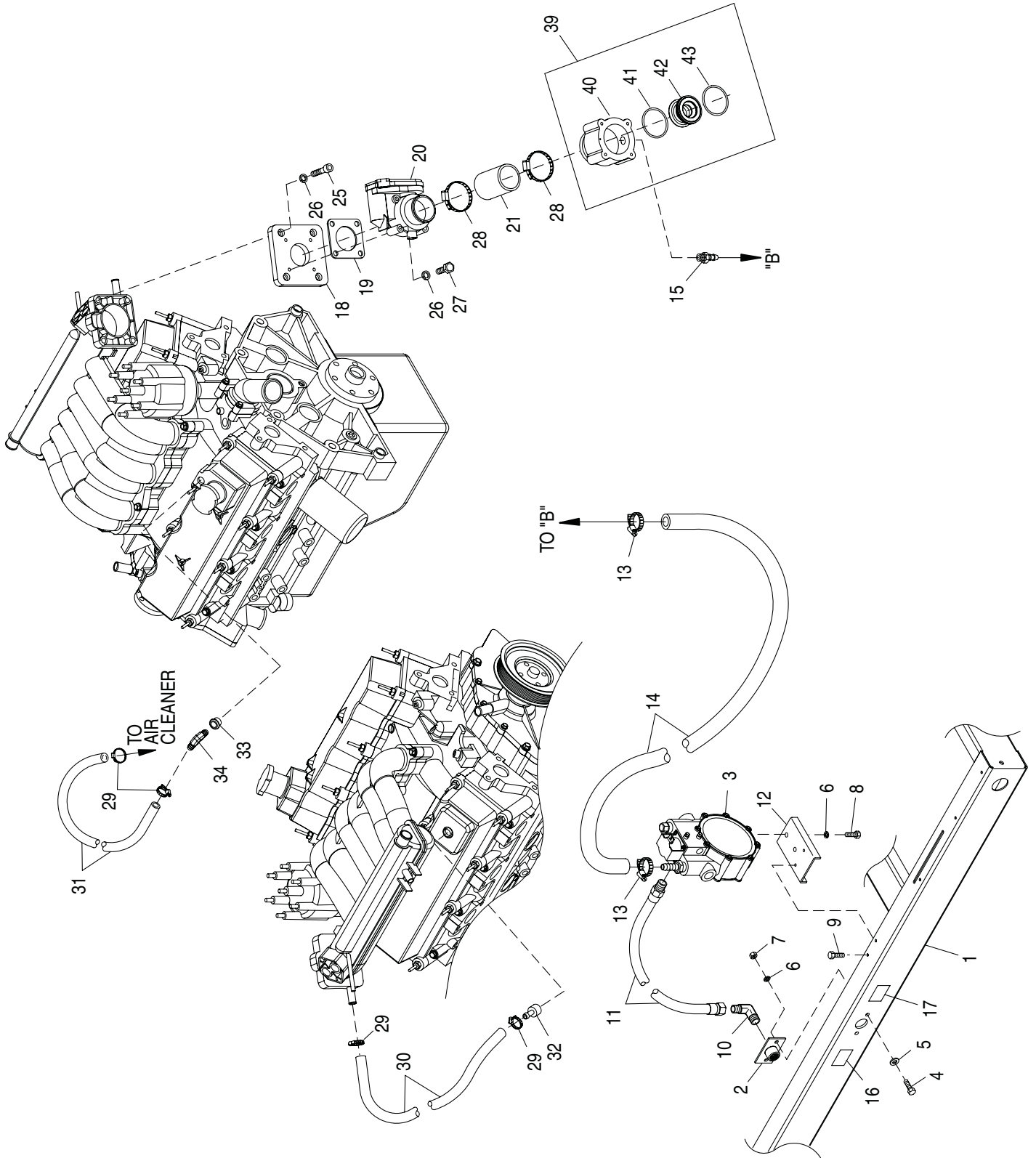


| ITEM | PART NO. | QTY. | DESCRIPTION |
|------|----------|------|----------------------------------|
| 1 | 0E9947 | 1 | RADIATOR R-IN,L-OUT 658X489X49 |
| 2 | 0E6340 | 1 | VENTURI 3.0L FORD HSB |
| 3 | 0E8531 | 2 | SIDE SUPPORT RADIATOR HSB |
| 4 | 0E6398 | 1 | TUBE LOWER RAD 3.0L FORD HSB |
| 5 | 0F6630 | 1 | HOSE RADIATOR UPPER |
| 6 | 080713 | 1 | BRACKET COOLANT TANK |
| 7 | 076749 | 1 | TANK COOLANT RECOVERY |
| 8 | 049814 | 4 | SCREW HHC M10-1.5 X 25 G8.8 |
| 9 | 022131 | 8 | WASHER FLAT 3/8-M10 ZINC |
| 10 | 046526 | 4 | WASHER LOCK M10 |
| 11 | 045772 | 4 | NUT HEX M10-1.5 G8 YEL CHR |
| 12 | 035685 | 6 | CLAMP HOSE #28 1.32-2.25 |
| 13 | 0E8562 | 1 | FAN GUARD HSB |
| 14 | 058443 | 4 | SCREW CRIMPTITE 1/4-20 X 5/8 |
| 15 | 0C2454 | 9 | SCREW TH-FRM M6-1 X 16 N WA Z/JS |
| 17 | 048031C | 1 | CLAMP HOSE BAND 1/4 |
| 18 | 029032 | 1 | HOSE 9/32 ID (30" LG) |
| 20 | 046627 | 1 | CAP RADIATOR |
| 21 | 069811 | 1 | CAP HEX 1/4 NPT BRASS |
| 22 | 065852 | 1 | SPRING CLIP HOLDER .37-.62 |
| 23 | 0A2111 | 1 | SCREW SWAGE 10-32 X 5/16 Z/YC |
| 24 | 052250 | 2 | TAPE FOAM 1 X 1 (27" LG) |
| 25 | 035461 | 1 | BARBED STR 1/4 NPT X 3/8 |
| 26 | 0C7649 | 1 | CLAMP HOSE .38-.87 |
| 27 | 069860C | 1 | HOSE OIL DRAIN ASSY 21" |
| 28 | 0F6746 | 1 | TUBE UPPER COOLANT C4 3.0L |
| 29 | 0F6631 | 1 | HOSE RADIATOR ENGINE |
| 30 | 0F6657 | 2 | SUPPORT TUBE RADIATOR |
| 31 | 055934N | 2 | CLAMP VINYL 1.31 X .281 Z |
| 32 | 092079 | 2 | SCREW HHTT M6-1.0 X 25 BP |
| 33 | 022097 | 2 | WASHER LOCK M6-1/4 |
| 35 | 047411 | 2 | SCREW HHC M6-1.0 X 16 G8.8 |

Section 9 - Exploded Views and Parts

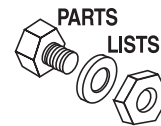
Liquid-cooled 30 kW Generators

Fuel System – Drawing No. 0F6849-A



Section 9 - Exploded Views and Parts

Liquid-cooled 30 kW Generators
Fuel System – Drawing No. 0F6849-A



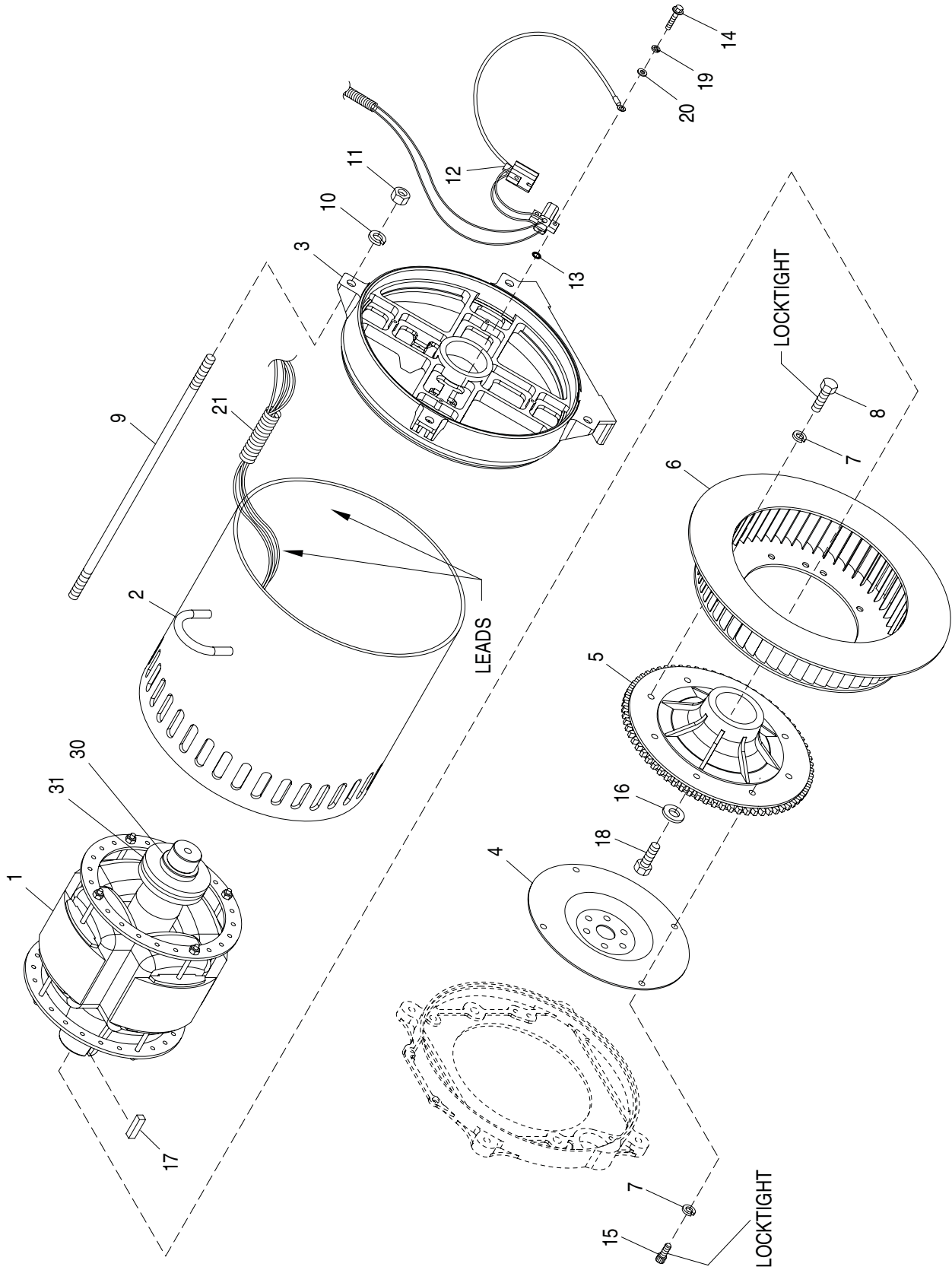
| ITEM | PART NO. | QTY. | DESCRIPTION |
|-------|----------|------|---|
| 1 * | ----- | 1 | WELDMENT MOUNTING BASE |
| 2 | 075580 | 1 | FLANGE FUEL INLET |
| 3 | 0E7691 | 1 | ASSY REGULATOR 3.0L NG OR LPV |
| 4 | 039253 | 2 | SCREW HHC M8-1.25 X 20 G8.8 |
| 5 | 022145 | 2 | WASHER FLAT 5/16 ZINC |
| 6 | 022129 | 4 | WASHER LOCK M8-5/16 |
| 7 | 045771 | 2 | NUT HEX M8-1.25 G8 YEL CHR |
| 8 | 042907 | 2 | SCREW HHC M8-1.25 X 16 G8.8 |
| 9 | 0C2454 | 2 | SCREW TH-FRM M6-1 X 16 N WA Z/JS |
| 10 | 026307 | 1 | ELBOW 90D STREET 3/4 |
| 11 | 0E1056 | 1 | FUEL HOSE ASSY NAT.GAS/L.P.V. |
| 12 | 0E6584 | 1 | BRACKET REGULATOR 3.0L FORD HSB |
| 13 | 057823 | 2 | CLAMP HOSE #10 .56 - 1.06 |
| 14 | 059194 | 1 | HOSE 5/8 ID LPG & NG (20" LG) |
| 15 | 044117 | 1 | BARBED STR 3/8 NPT X 5/8 |
| 16 | 0D1509 | 1 | DECAL INLET PRESSURE |
| 17 | 050279 | 1 | DECAL FUEL INLET NG |
| 18 | 0E6123 | 1 | INTAKE ADAPTER 3.0L FORD-BOSCH |
| 19 | 0E6586 | 1 | GASKET BOSCH 32 |
| 20 | 0E4395 | 1 | ACTUATOR BOSCH 32 GOVERNOR |
| 21 | 057753B | 1 | HOSE 1.5 ID X 2 LG 20R4 |
| 25 | 047487 | 4 | SCREW SHC M6-1.0 X 18 G12.9 |
| 26 | 022097 | 8 | WASHER LOCK M6-1/4 |
| 27 | 051751 | 4 | SCREW HHC M6-1.0 X 50 G8.8 |
| 28 | 035685 | 2 | CLAMP HOSE #28 1.32-2.25 |
| 29 | 0C7649 | 4 | CLAMP HOSE .38-.87 |
| 30 | 047290 | 1 | HOSE 3/8 ID SINGLE BRAID (305mm [22"] LONG) |
| 31 | 047290 | 1 | HOSE 3/8 ID SINGLE BRAID (432mm [13"] LONG) |
| 32 | 0A4121 | 1 | VALVE PCV |
| 33 | 0E6609 | 1 | GROMMET ROCKER COVER 3.0LFORD |
| 34 | 049099 | 1 | BARBED EL 90 3/8 X 3/8 PLST |
| 35 ** | 055934M | 1 | CLAMP VINYL .75 X .343 Z |
| 36 ** | 047411 | 1 | SCREW HHC M6-1.0 X 16 G8.8 |
| 37 ** | 022097 | 1 | WASHER LOCK M6-1/4 |
| 38 ** | 022473 | 1 | WASHER FLAT 1/4-M6 ZINC |
| 39 | 0E9295A | 1 | ASSY THROTTLE 27MM |
| 40 | 0E6382A | 1 | VENTURI HOLDER W/32MM ACTUATOR |
| 41 | 0E7121 | 1 | O-RING 47.625 ID X 2.38 WIDTH |
| 42 | 0E6376A | 1 | VENTURI, 27 ID THROTTLE W/CHOK |
| 43 | 0F2119 | 1 | O-RING 45.63 ID X 2.62 WIDTH |

* SHOWN IN OTHER VIEW

** NOT SHOWN-USED TO HOLD #31 IN PLACE

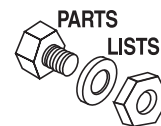
Section 9 - Exploded Views and Parts

Liquid-cooled 30 kW Generators
Alternator – Drawing No. 0F5092-B



Section 9 - Exploded Views and Parts

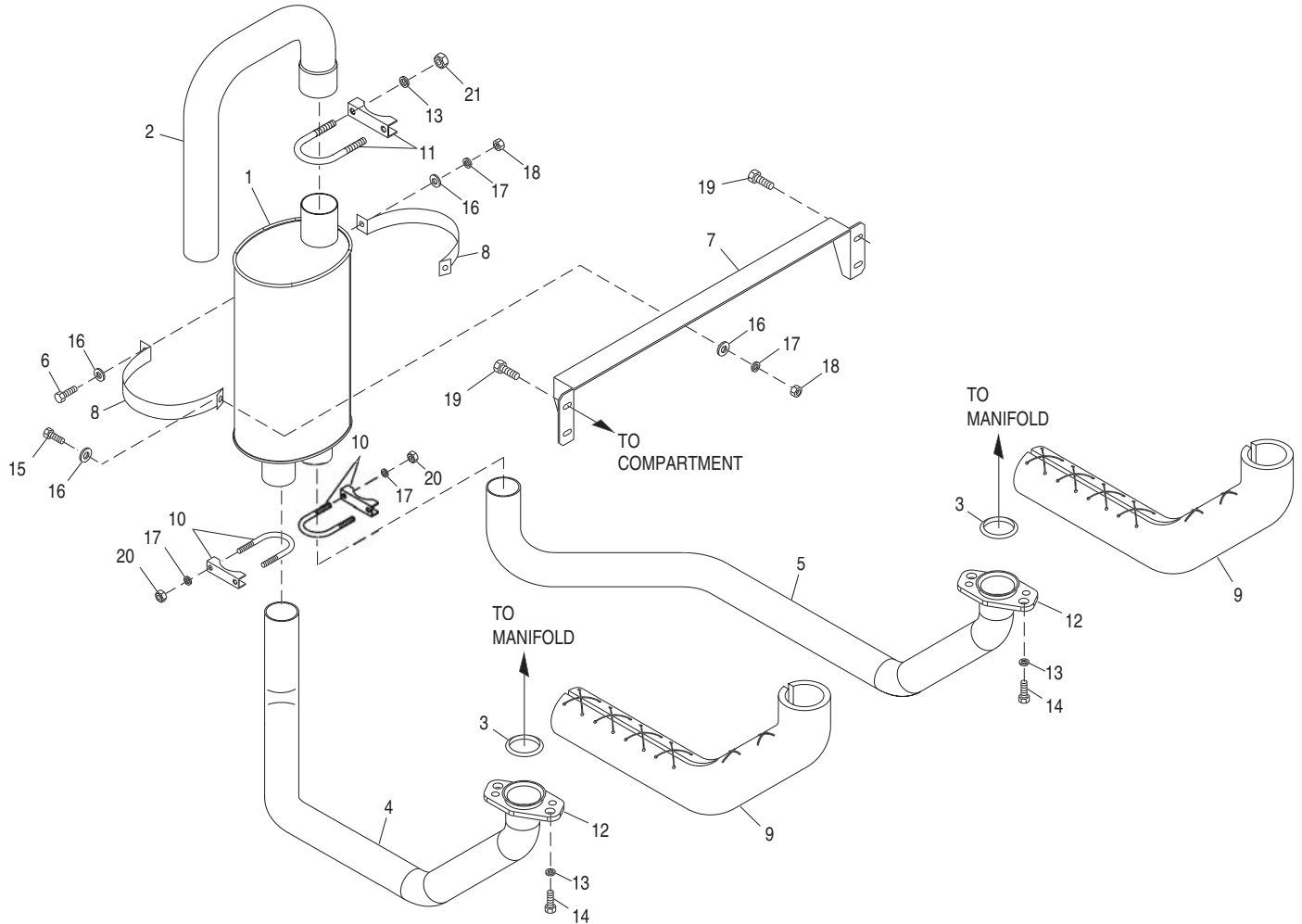
Liquid-cooled 30 kW Generators
Alternator – Drawing No. 0F5092-B



| ITEM | PART NO. | QTY. | DESCRIPTION |
|-------------------------|------------|------|--|
| 1 | 0F1659A | 1 | ROTOR 390 15KW 1P DIRECT HSB (2.5L FORD) |
| | 0F1657A | 1 | ROTOR 390 20KW 1P DIRECT HSB (2.5L FORD) |
| | 0F1655A | 1 | ROTOR 390 25KW 1P DIRECT HSB (2.5L FORD) |
| | 0F5073A | 1 | ROTOR 390__30AD1 HSB TECUM |
| | 0E7413A | 1 | RTR 390 40KW 1P DIRECT HSB |
| 2 | 0F1660A | 1 | STR 390 15AD HSB (382MM LONG) (2.5L FORD) |
| | 0F1658A | 1 | STR 390 20AD HSB (382MM LONG) (2.5L FORD) |
| | 0F1656A | 1 | STR 390 25AD HSB (382MM LONG) (2.5L FORD) |
| | 0F5074A | 1 | STR-390__30AD1 HSB TECUM |
| | 0E7412A | 1 | STR-390--40AD HSB (433MM LONG) |
| 3 | 0E5706 | 1 | REAR BEARING CARRIER 390/DRCT |
| 4 | 0E5048 | REF | FLEXPLATE 3.0L FORD |
| | 0E5048B | REF | FLEXPLATE 2.5L FORD |
| | 0E5048A | REF | FLEXPLATE HSB 3.9L CHRYSLER |
| 5 | 0E6668 | 1 | FLYWHEEL ASSY 3.0L HSB LG GEAR |
| 6 | 0E6076 | 1 | REVCOR FAN 10.75 X 2 W/PRESS DIS |
| 7 | 046526 | 8 | WASHER LOCK M10 |
| 8 | 051755 | 4 | SCREW HHC M10-1.5 X 16 G8.8 |
| 9 | 04576100BK | 4 | STUD M14-2.0 X 490 G5 ZINC (3.0L FORD & 2.5L FORD) |
| | 04576100BF | 4 | STUD M14-2.0 X 540 G5 ZINC |
| 10 | 043123 | 4 | WASHER LOCK M14 |
| 11 | 051779 | 4 | NUT HEX M14-2.0 G8 YEL CHR |
| 12 | 0E7587 | 1 | ASSY BRUSH HOLDER 390/HSB |
| 13 | 023365 | 1 | WASHER SHAKEPROOF INT #8 |
| 14 | 092980 | 4 | SCREW PPHM M4-0.7 X 25 |
| 15 | 057192 | 4 | SCREW SHC M10-1.5 X 30 G12.9 |
| 16 | 0A2602 | 1 | WASHER FLAT .688 ID X 3.25 OD |
| 17 | 042558 | 1 | KEY SQ 3/8 X 1 STEEL |
| 18 | 0A2601 | 1 | SCREW HHC M16-2.0 X 45 G8.8 |
| 19 | 022264 | 4 | WASHER LOCK #8-M4 |
| 20 | 038150 | 4 | WASHER FLAT #8 ZINC |
| 21 | 077043F | 1 | CONDUIT FLEX 1-1/4" (30" LG - 3.0L FORD & 3.9L CHRYSLER) |
| | 077043F | 1 | CONDUIT FLEX 1-1/4" (18" LG - 2.5L FORD) |
| ROTOR REPLACEMENT PARTS | | | |
| 30 | 047248 | 1 | BALL BEARING-45 MM |
| 31 | 070892 | 1 | SLIP RING -MACHINED- |

Section 9 - Exploded Views and Parts

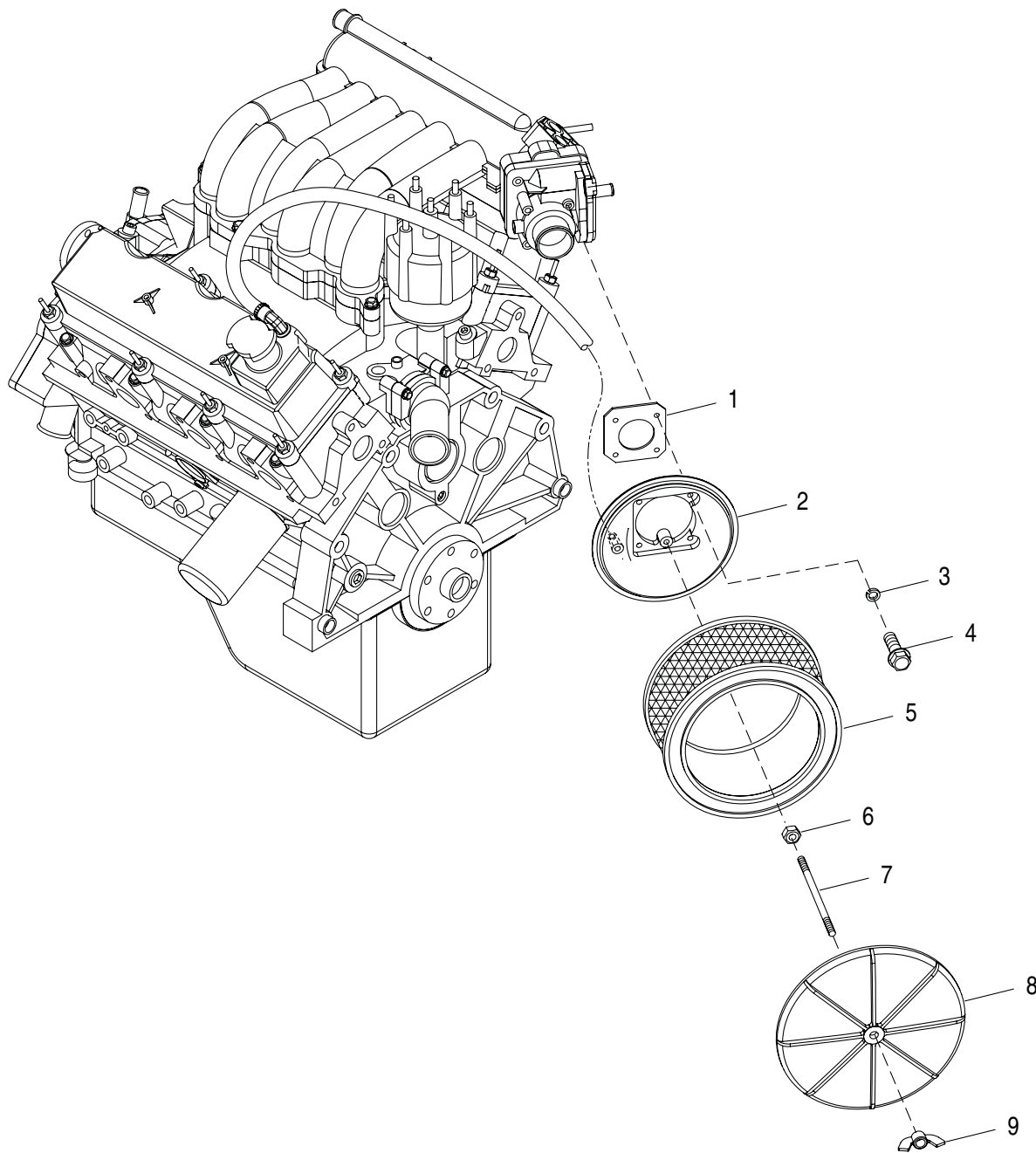
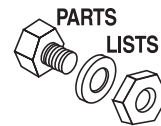
**Liquid-cooled 30 kW Generators
Exhaust – Drawing No. 0F0968-B**



| ITEM | PART NO. | QTY. | DESCRIPTION | ITEM | PART NO. | QTY. | DESCRIPTION |
|------|----------|------|-------------------------------|------|----------|------|----------------------------------|
| 1 | 0F0738 | 1 | MUFFLER 7"X9"-(2)2"IN/2.5"OUT | 12 | 0E8816 | 2 | EXHAUST FLANGE 2" PIPE |
| 2 | 0F6258 | 1 | PIPE MUFFLER OUT | 13 | 085917 | 8 | WASHER LOCK 3/8 SS |
| 3 | 044149 | 2 | GASKET EXHAUST RING | 14 | 0D2611 | 4 | SCREW HHC 3/8-16 X 1-3/4 SS |
| 4 | 0F1008 | 1 | EXHAUST PIPE LH 3.0L HSB | 15 | 039253 | 2 | SCREW HHC M8-1.25 X 20 G8.8 |
| 5 | 0F1009 | 1 | EXHAUST PIPE RH 3.0L HSB | 16 | 022145 | 4 | WASHER FLAT 5/16-M8 ZINC |
| 6 | 039288 | 1 | SCREW HHC M8-1.25 X 55 G8.8 | 17 | 022129 | 7 | WASHER LOCK M8-5/16 |
| 7 | 0E5914 | 1 | BRACKET MUFFLER 3.0L FORD HSB | 18 | 045771 | 3 | NUT HEX M8-1.25 G8 YEL CHR |
| 8 | 0E8726 | 2 | STRAP MUFFLER | 19 | 0C2454 | 4 | SCREW TH-FRM M6-1 X 16 N WA Z/JS |
| 9 | 0E0170 | 2 | EXHAUST BLANKET 750MM | 20 | 022259 | 4 | NUT HEX 5/16-18 STEEL |
| 10 | 036797 | 2 | BOLT U 5/16-18 X 2.25 | 21 | 022241 | 2 | NUT HEX 3/8-16 STEEL |
| 11 | 080762 | 1 | BOLT U 3/8-16 X 2.62 | | | | |

Section 9 - Exploded Views and Parts

Liquid-cooled 30 kW Generators
Air Cleaner – Drawing No. 0F6850-A



| ITEM | PART NO. | QTY. | DESCRIPTION |
|------|----------|------|-------------------------------|
| 1 | 0E5193 | 1 | PLATE AIR CLEANER ADAPTER |
| 2 | 0E0519A | 1 | ADAPTER CARBURETOR W/PVC CONN |
| 3 | 049226 | 4 | WASHER LOCK M5 |
| 4 | 049815 | 4 | SCREW HHC M5-0.8 X 16 G8.8 |
| 5 | 0C8127 | 1 | ELEMENT AIR CLEANER |
| 6 | 022127 | 1 | NUT HEX 1/4-20 STEEL |
| 7 | 062974 | 1 | STUD TH 1/4-20 X 4-1/2 G2 ZNC |
| 8 | 0A5547 | 1 | COVER - AIR CLEANER |
| 9 | 037561 | 1 | NUT WING 1/4-20 NYLK |