

# GENERAC®

## POWER SYSTEMS, INC.

### Owner's Manual

**GENERAC®**  
POWER SYSTEMS, INC.  
**GUARDIAN®**

Liquid-cooled, Prepackaged  
Standby Generators

Model Numbers  
(Natural Gas)

004188-1

004370-2

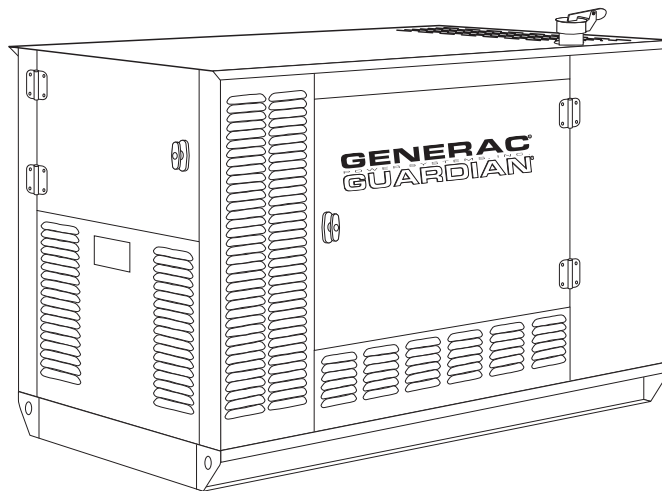
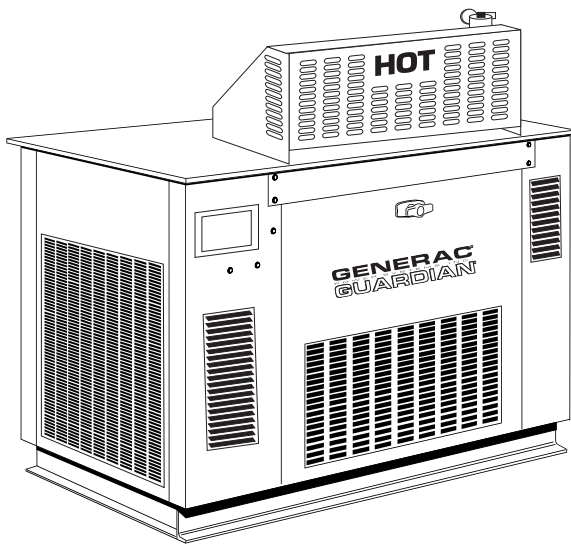
004474-1

(Liquid Propane Vapor)

004189-1

004371-2

004475-1

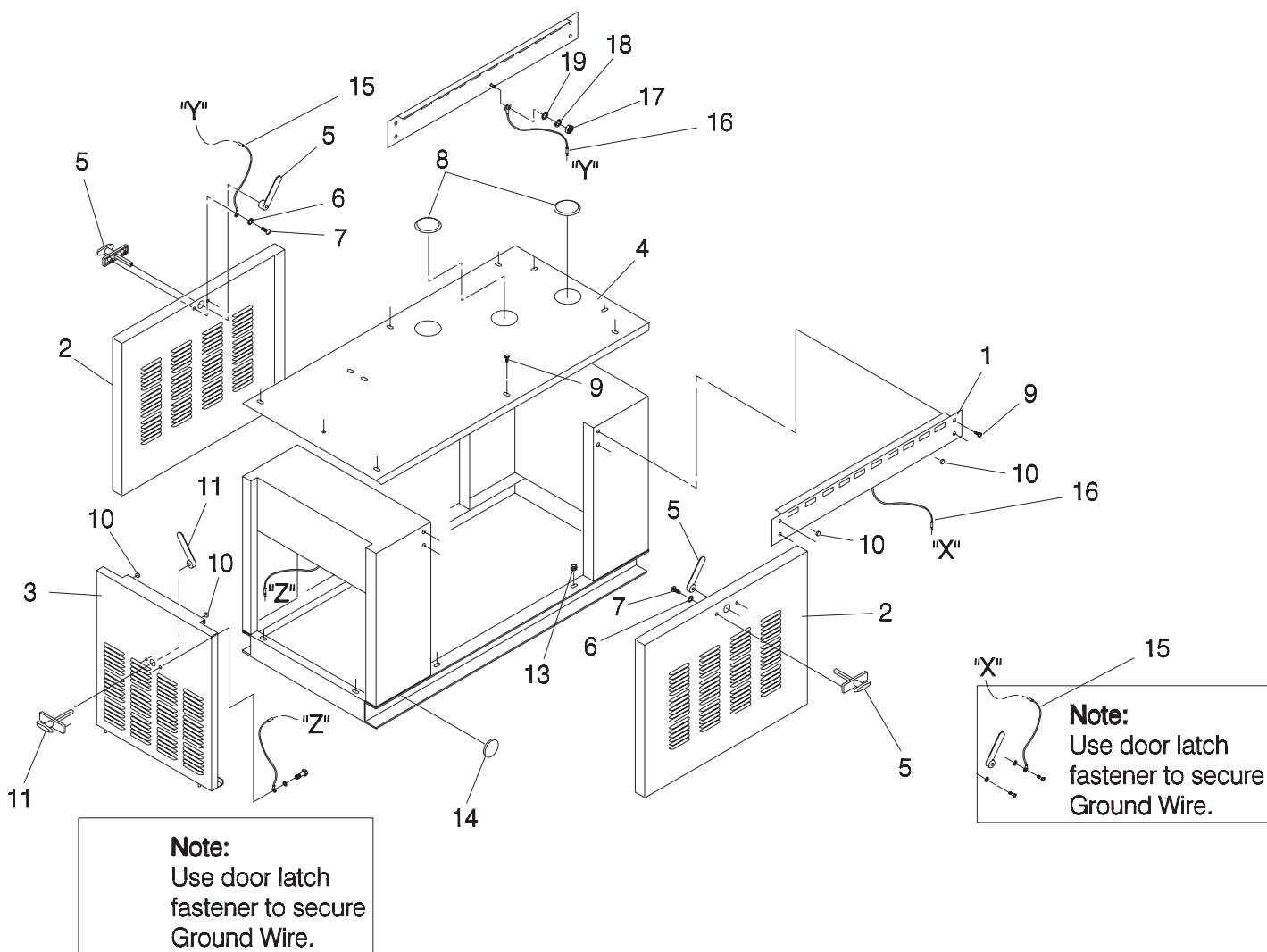
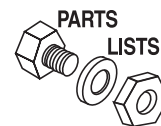


—▲ CAUTION ▲—

**ONLY QUALIFIED ELECTRICIANS OR CONTRACTORS SHOULD ATTEMPT INSTALLATION!!**

**\*This manual should remain with the unit.\***

**Section 8 - Exploded Views and Parts**  
**Guardian Liquid-cooled 15 kW, 20 kW and 25 kW Generators**  
**Exploded View – Enclosure (15 and 20 kW) – Drawing No. 0A7188-D**

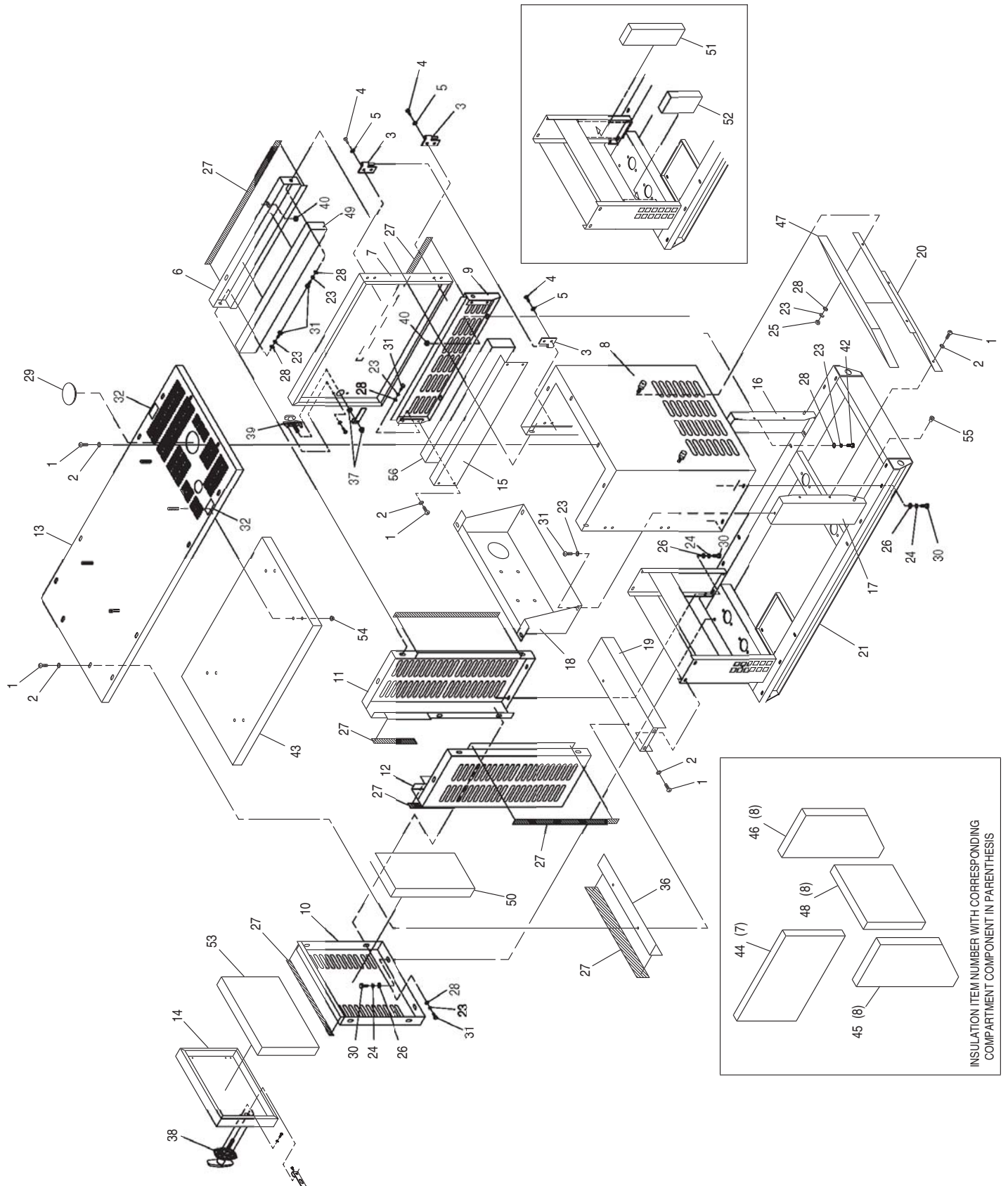


ITEM	PART NO.	QTY.	DESCRIPTION
1	97575	2	BRACE, SIDE
2	A3769	2	DOOR, ENCLOSURE
3	A3768	1	DOOR, ENCLOSURE
4	A5314	1	TOP, ENCLOSURE
5	67042	2	LATCH
6	22264	6	LOCK WASHER, #8
7	67035	6	SCREW, PAN HEAD MACH.-#8-32 x 5/16"
8	82570	2	PLUG-4"
9	A7215	10	SWAGE FASTENER-W/NYLON WASHER

ITEM	PART NO.	QTY.	DESCRIPTION
10	32990	6	BUMPER
11	C2164	1	LATCH
13	29107	6	GROMMET 3/16"-7/8"
14	A1694	5	BUTTON-PLUG 1-1/2"
15	91297-063	3	GROUND WIRE ASSEMBLY
16	91297-064	3	GROUND WIRE ASSEMBLY
17	49813	3	HEX NUT M6 x 1.0
18	70005	3	LOCK WASHER M6
19	49811	3	FLAT WASHER M6

**Section 8 - Exploded Views and Parts**

**Guardian Liquid-cooled 15 kW, 20 kW and 25 kW Generators  
Exploded View - Enclosure (25kW) - Drawing No. 0C1404-D**



INSULATION ITEM NUMBER WITH CORRESPONDING  
COMPARTMENT IN PARENTHESIS

Section 8 - Exploded Views and Parts

Guardian Liquid-cooled 15 kW, 20 kW and 25 kW Generators  
Exploded View – Enclosure (25kW) – Drawing No. 0C1404-D



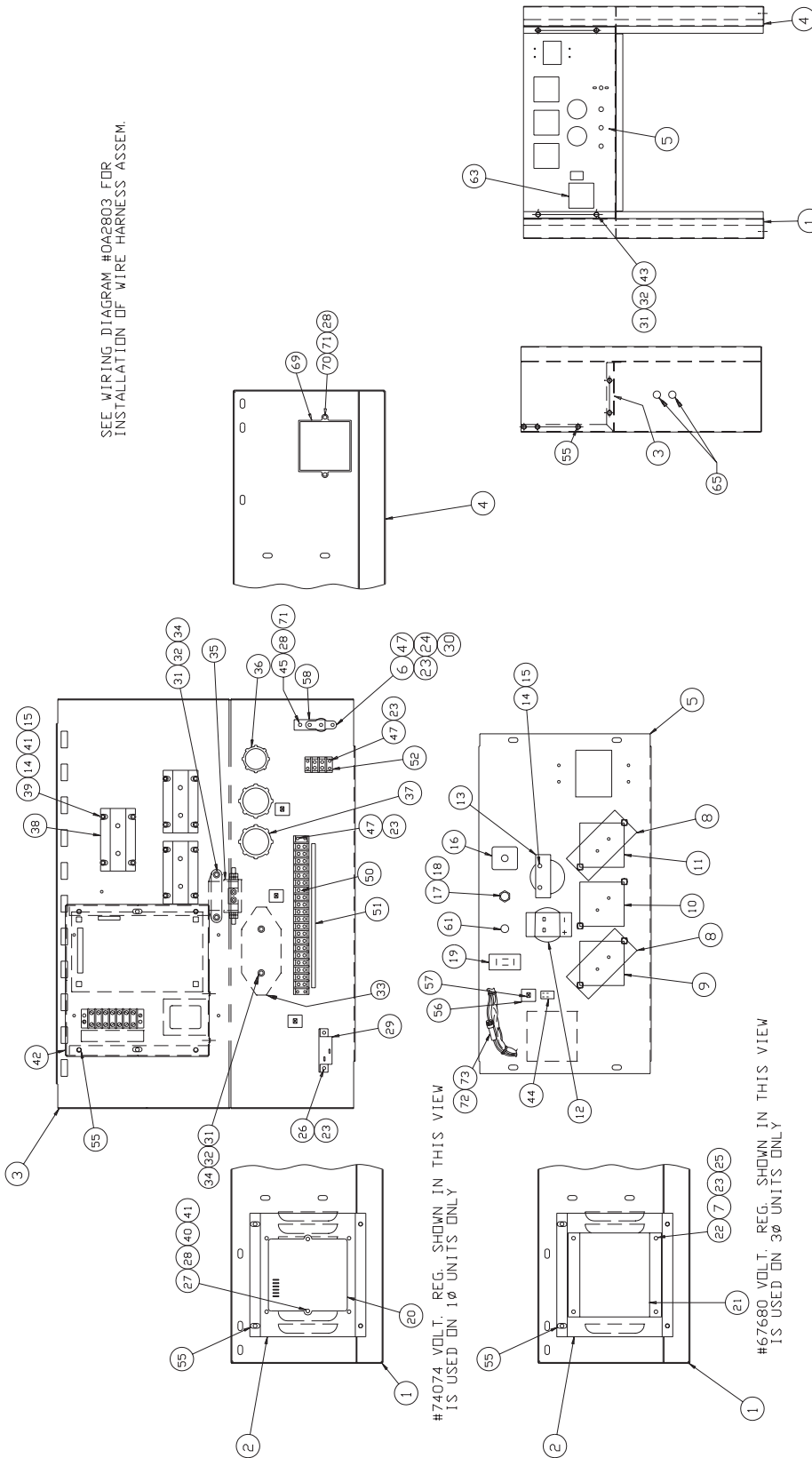
ITEM	PART NO.	QTY.	DESCRIPTION
1	0A2110	32	SCREW SWAGE 1/4-20 X 1/2 Z/YC
2	0A2115	32	WASHER NYLON .250
3	0A3133A	4	HINGE SLIP MALE LH
	0A3133B	4	HINGE SLIP FEMALE LH
	0A3133C	2	HINGE SLIP MALE RH
	0A3133D	2	HINGE SLIP FEMALE RH
4	0A3359	24	SCREW BHSC M6-1.0 X 16 SS
5	0A3360	24	SHAKEPROOF INT M6 SS
6	0C1245	1	PANEL TOP SIDE LH
	0C1245A	1	PANELTOP SIDE RH
7	0A3449	2	DOOR SIDE
8	0A4822	1	PANEL FRONT
9	0A4823	2	PANEL SIDE BOTTOM
10	0A4824	1	PANEL REAR
11	0A4825	1	CORNER POST REAR LH
12	0A4826	1	CORNER POST REAR RH
13	0C1193	1	TOP ENCLOSURE 1.5 SAE
14	0A4831	1	DOOR REAR
15	0A4832	2	DUCT
16	0C1067	1	SUPPORT RADIATOR LH
17	0C1067A	1	SUPPORT RADIATOR RH
18	0C1068	1	SUPPORT MUFFLER 1.5L
19	0C8817	1	TOP CONTROL PANEL SAE
20	0C1244	1	DUCT FRONT 1.5L SAE
21	0A9955	1	BASE MOUNTING
23	022097	16	WASHER LOCK M6-1/4
24	022129	12	WASHER LOCK M8-5/16
25	022127	4	NUT HEX 1/4-20 STEEL
26	022145	12	WASHER FLAT 5/16 ZINC
27	089961	24 FT.	FOAM STRIP 3/4 X 1/4
28	022473	20	WASHER FLAT 1/4 ZINC
29	082570	1	PLUG PLASTIC 4 PLUG BTTN #425
30	039253	12	SCREW HHC M8-1.25 X 20 G8.8
31	042568	14	SCREW HHC M6-1.0 X 20 G8.8
32	0D3397	2	DECAL CAUTION HOT SURFACES
36	0D3785	1	BRACE REAR DOOR
37	037337	4	NUT HEX JAM 3/8-24 SS
38	0C2164	1	LATCH AND CAM
39	067042	2	LATCH AND CAM
40	067577	4	NUT SPEED 1/4-20
42	022413	4	SCREW HHC 1/4-20 X 1 G5
43 *	0C1053B	1	INSULATION PANEL TOP
44 *	0C1053A	2	INSULATION PANEL SIDE DOOR
45 *	0C1053E	1	INSULATION PANEL FRONT RH
46 *	0C1053F	1	INSULATION PANEL FRONT LH
47 *	0C1053G	1	INSULATION DUCT FRONT
48 *	0C1053H	1	INSULATION PANEL FRONT TOP
49 *	0C1053D	2	INSULATION PANEL DUCT SIDE TOP
50 *	0C1053J	1	INSULATION PANEL REAR
51 *	0C1053K	1	INSULATION DUCT LH SIDE
52 *	0C1053L	1	INSULATION DUCT RH SIDE
53 *	0C1053M	1	INSULATION DOOR REAR
54	078115	14	WASHER SELF LOC/DOME
55	030486	2	GROMMET 7/16 X 1/16 X 1/4
56 *	0C1053C	2	INSULATION PANEL DUCT SIDE BOTTOM

\* NOTE: THESE PARTS ARE INCLUDED IN KIT 0C1053Z.

**Section 8 - Exploded Views and Parts**

**Guardian Liquid-cooled 15 kW, 20 kW and 25 kW Generators**

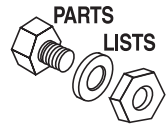
**Exploded View - Control Panel (15 and 20 kW) - Drawing No. 0A2872-F**



P/N	PHASE	ITEM 7 P/N 022985	ITEM 14 P/N 022158	ITEM 15 P/N 022158	ITEM 20 P/N 074074	ITEM 21 P/N 067680	ITEM 22 P/N 075476	ITEM 23 P/N 022264	ITEM 25 P/N 051715	ITEM 27 P/N 076039	ITEM 28 P/N 051756	ITEM 39 P/N 033121	ITEM 40 P/N 049226
0A2856	1Ø	-	QTY. 12	QTY. 12	QTY. 1	-	-	QTY. 8	-	QTY. 2	QTY. 5	QTY. 4	QTY. 2
0A2856A	3Ø	QTY. 4	QTY. 14	QTY. 14	-	QTY. 1	QTY. 4	QTY. 12	QTY. 4	-	QTY. 3	QTY. 6	-

Section 8 - Exploded Views and Parts

Guardian Liquid-cooled 15 kW, 20 kW and 25 kW Generators  
Exploded View – Control Panel (15 and 20 kW) – Drawing No. 0A2872-F



ITEM	PART NO.	QTY.	DESCRIPTION	ITEM	PART NO.	QTY.	DESCRIPTION
1	098062	1	SUPPORT, CONTROL PANEL, L.H.	36	0C2512	1	GROMMET 1/16-1-3/8
2	075589	1	BRACKET, VOLTAGE REGULATOR	37	0C2513	2	GROMMET 1/8-1-3/4
3	0A1775	1	CONTROL, PANEL-BACK	38	061395	**	TRANSFORMER, CURRENT 100/5
4	098063	1	SUPPORT, CONTROL PANEL R.H.		058318	**	TRANSFORMER, CURRENT 150/5
5	0A2106	1	SILKSCREEN, "P" PANEL	39	033121	2	HEX HD. MACH. SCR. 10-32 x 1/2"
6	057073	1	BLOCK, JUNCTION	40	049226	2	LOCK WASHER, M5
7	022985	**	WASHER, FLAT #6	41	023897	6	WASHER, FLAT #10-M5
8	070080	2	INSULATOR	42	075595	1	CMA BOX ASSEMBLY
9	070043	1	VOLTMETER, AC 0-300	43	077438	4	SCREW, PHM M6 x 1.0 x 12MM
10	070055	1	AMMETER, AC 0-100	44	082573	1	ROCKER SWITCH DPST
11	070042	1	METER, FREQUENCY 55-65HZ	45	055440	1	HHCS M5-0.8 x 25MM
12	070081	1	HOURMETER	47	0C2212	6	M4-.7 x 16 SWAGEFORM PPH
13	076037	1	METER, VOLT DC 8-18V	50	057335	1	TERMINAL BLOCK 20 PCS #6 PANEL
14	022152	**	WASHER, LOCK #10	51	0A7230	1	DECAL, TERMINAL STRIP
15	022158	**	NUT, HEX #10-32	52	048766	1	BLOCK, TERMINAL 20 PCS #6 PANEL
16	061945	1	SWITCH, SELECTOR AMP/VOLT	55	0A7215	14	1/4"-20 X 5/8" LG. SWAGEFORM
17	032300	1	HOLDER, FUSE	56	057593	4	MOUNT, CABLE TIE
18	022668	1	FUSE, AGC-30	57	028739	4	WRAP, TIE-4" LONG
19	076020	1	SWITCH, TOGGLE DPDT	58	061979	1	BUS, BAR
20	074074	**	ASSEM. POTTED REG. WOFIN	59*	0A2833	1	HARNESS, PANEL "PP" IP
21	067680	**	VOLTAGE REG. ASSEM. B&D	60*	0A2833A	1	HARNESS, PANEL "PP" 3P
22	075476	**	SCREW, PPHM M4-0.7 x 16MM	61	064009	1	PILOT LIGHT RED 14-V.
23	022264	**	WASHER, LOCK #8-M4	63	081988	1	DECAL-EXERCISE INFO
24	022237	1	WASHER, LOCK 3/8"	65	086381	2	CAPLUG, BPF-1/4"
25	051715	**	NUT, HEX M4-0.7	67	036903	2	SCREW, PPHM 6-32 x 5/8 LG
26	0C2428	2	6-32 x 5/8" SWAGEFORM PPH	68	022155	2	WASHER, LOCK #6
27	076039	**	SCREW, PPHM-M5-0.8 x 40MM	69	098647	1	STEPPER MOTOR KIT
28	051756	**	HHCS M10-1.5 x 20	70	076040	2	PPHMS, M5-0.8 x 16MM
29	048476	1	CIRCUIT BREAKER 4.5A.	71	049226	2	WASHER, LOCK M5
	054450	1	CIRCUIT BREAKER 5.5A.	72***	0D5324	1	FUSE & HOLDER LITTLE 7.5A
30	022241	1	HEX NUT 3/8"-16	73***	0A9611	REF	FUSE 7.5AXBK/AGC7.5NX
31	022097	8	WASHER, LOCK 1/4-M6				
32	022473	8	WASHER, FLAT 1/4-M6				
33	0A1354A	1	REGULATOR-DC ALT.				
34	043116	4	HHCS, M6-1.0 x 12MM				
35	056739	1	SOLENOID RELAY 12VDC				

\*NOT SHOWN ON THIS ASSEMBLY

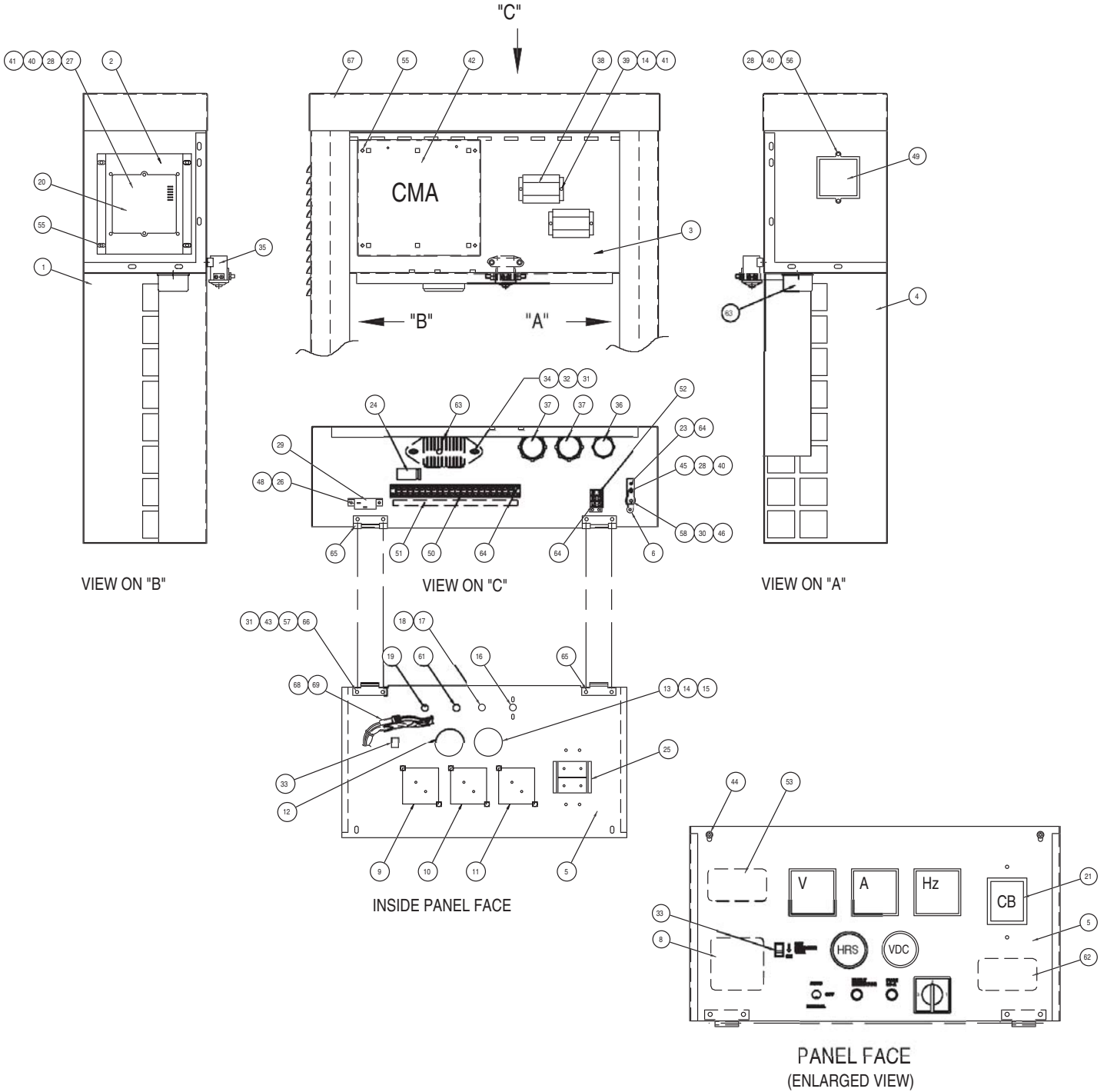
\*\*SEE CHART

\*\*\*PART OF CONTROL PANEL WIRE HARNESS



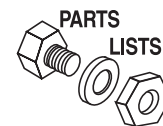
**Section 8 - Exploded Views and Parts**

**Guardian Liquid-cooled 15 kW, 20 kW and 25 kW Generators  
Exploded View – Control Panel (25kW) – Drawing No. 0C8847-D**



Section 8 - Exploded Views and Parts

Guardian Liquid-cooled 15 kW, 20 kW and 25 kW Generators  
Exploded View – Control Panel (25kW) – Drawing No. 0C8847-D

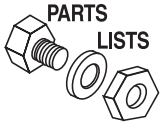


ITEM	PART NO.	QTY.	DESCRIPTION	ITEM	PART NO.	QTY.	DESCRIPTION
1	0C5077	1	SUPPORT CONTROL PANEL LH	37	063212	1	GROMMET 1.75 X .12 X 1.50
2	075589	1	BRACKET VOLTAGE REGULATOR	38	058318	2	TRANSFRM 150A TO 5A 5VA
3	0A1775	1	CONTROL PANEL-BACK	39	033121	2	SCREW HHC #10-32 X 1/2
4	0C5078	1	SUPPORT CONTROL PANEL RH	40	049226	4	WASHER LOCK M5
5	0C4224A	1	SILKSCREEN PANEL (SAE)	41	023897	10	WASHER FLAT #10 ZINC
6	057073	1	BLOCK JUNCTION 3/8-16	42	075595	1	ASSEMBLY CMA BOX
7	022985	4	WASHER FLAT #6 ZINC	43	049811	8	WASHER FLAT M6
8	081988	1	DECAL EXERCISE INFO	44	072355	2	SCREW HHC M6-1 X 12 SEMS
9	070043	1	VOLTMETER AC 0-300	45	055440	1	SCREW HHC M5-0.8 X 25 G8.8
10	070055	1	AMMETER AC 0-100	46	022241	1	NUT HEX 3/8-16 STEEL
11	070042	1	FREQUENCY METER 55-65HZ	48	022155	2	WASHER LOCK #6
12	070081	1	HOURLMETER	49	098647	1	ASSEMBLY L.C. ELECT GOV
13	076037	1	VOLTMETER DC 8-18V	50	057335	1	BLOCK TERM 20A 20 X 6 X 1100V
14	022152	10	WASHER, LOCK #10	51	021480	1	DECAL TERMINAL STRIP
15	022158	10	NUT HEX #10-32 STEEL	52	048766	1	BLOCK TERM 20A 2 X 6 X 1100V
16	061945	1	SWITCH 6A AMP/V SELECTOR	53	058589	1	DECAL WARN ENG START
17	032300	1	HOLDER FUSE	54*	070882	1	ASSEMBLY SUPPRESSION
18	022668	1	FUSE 30A X AGC30 HLDR22669 HKP	55	0A7215	10	SCREW SW 1/4-20 X 5/8 N WA JS500
19	076020	1	SWITCH DPDT 15/10 SP ON-OFF-ON	56	076040	2	SCREW PPHM M5-0.8 X 16
20	083048	1	ASSEMBLY POTTED REG WOFIN	57	049813	8	NUT HEX M6-1.0 G8 YEL CHR
21	0A2077	1	CIRCT BRK 125X2 120/240V	58	061979	1	BUS BAR
22	075476	14	SCREW PPHM M4-0.7 X 16	59 *	0A2833	1	HARNESS PNL "PP" 1P
23	022264	14	WASHER LOCK #8-M4	60 *	0A6821	1	HARNESS WIRING (1.5L)
24	0A3968	1	ASSEMBLY CAPACITOR FILTER	61	064009	1	LIGHT 12VDC .02A LED RED PILOT
25	039782	1	BRACKET CIRCT BRK MOUNTING	62	064828	1	DECAL TRAN SWITCH CONN
26	0C2323	2	SCREW PHTT #6-32 X 5/8 ZYC	63	0A1354A	1	REGULATOR - DC ALT
27	076039	2	SCREW PPHM M5-0.8 X 40	64	0C2212	6	SCREW PHTT M4-0.7 X 16 ZYC
28	051756	3	SCREW HHC M10-1.5 X 20 G8.8	65	0C3826	2	HINGE CONTROL PANEL
29	048476	1	CIRCT BRK 4.5 X 1 AUT30KW CNT45K	66	0C4427	8	T.H.M.S SS M6 X 1.0 X 12
30	022237	1	WASHER LOCK 3/8	67	0C8817	1	CONTROL PANEL TOP (SAE)
31	022097	8	WASHER LOCK M6-1/4	68 **	0D5324	1	FUSE & HOLDER LITTLE 7.5A
32	022473	8	WASHER FLAT 1/4 ZINC	69 **	0A9611	REF	FUSE 7.5A X BK/AGC7.5NX
33	082573	1	SWITCH DPST 5 125V SPD RCKR				
34	043116	4	SCREW HHC M6-1.0 X 12 G8.8				
35	056739	1	RELAY SOLENOID 12VDC PNL MNT				
36	072252	2	GROMMET 1.37 X .06 X 1.00				

\* NOT SHOWN ON THIS ASSEMBLY

\*\* PART OF CONTROL PANEL WIRE HARNESS

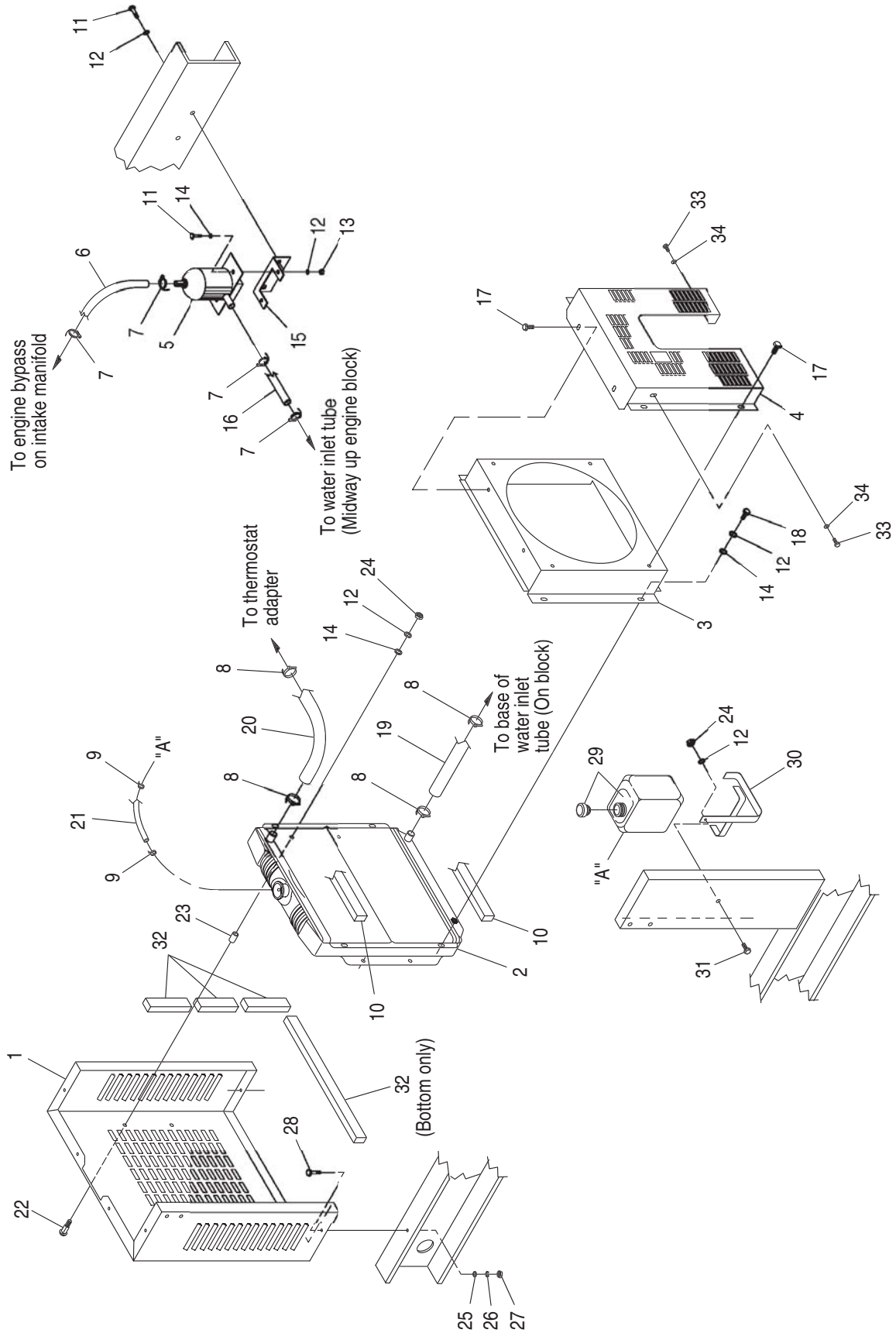




**Section 8 - Exploded Views and Parts**

**Guardian Liquid-cooled 15 kW, 20 kW and 25 kW Generators**

**Exploded View - Radiator (15 & 20 kW) - Drawing No. 0A7206-D**



Section 8 - Exploded Views and Parts

Guardian Liquid-cooled 15 kW, 20 kW and 25 kW Generators  
Exploded View – Radiator (15 & 20 kW) – Drawing No. 0A7206-D

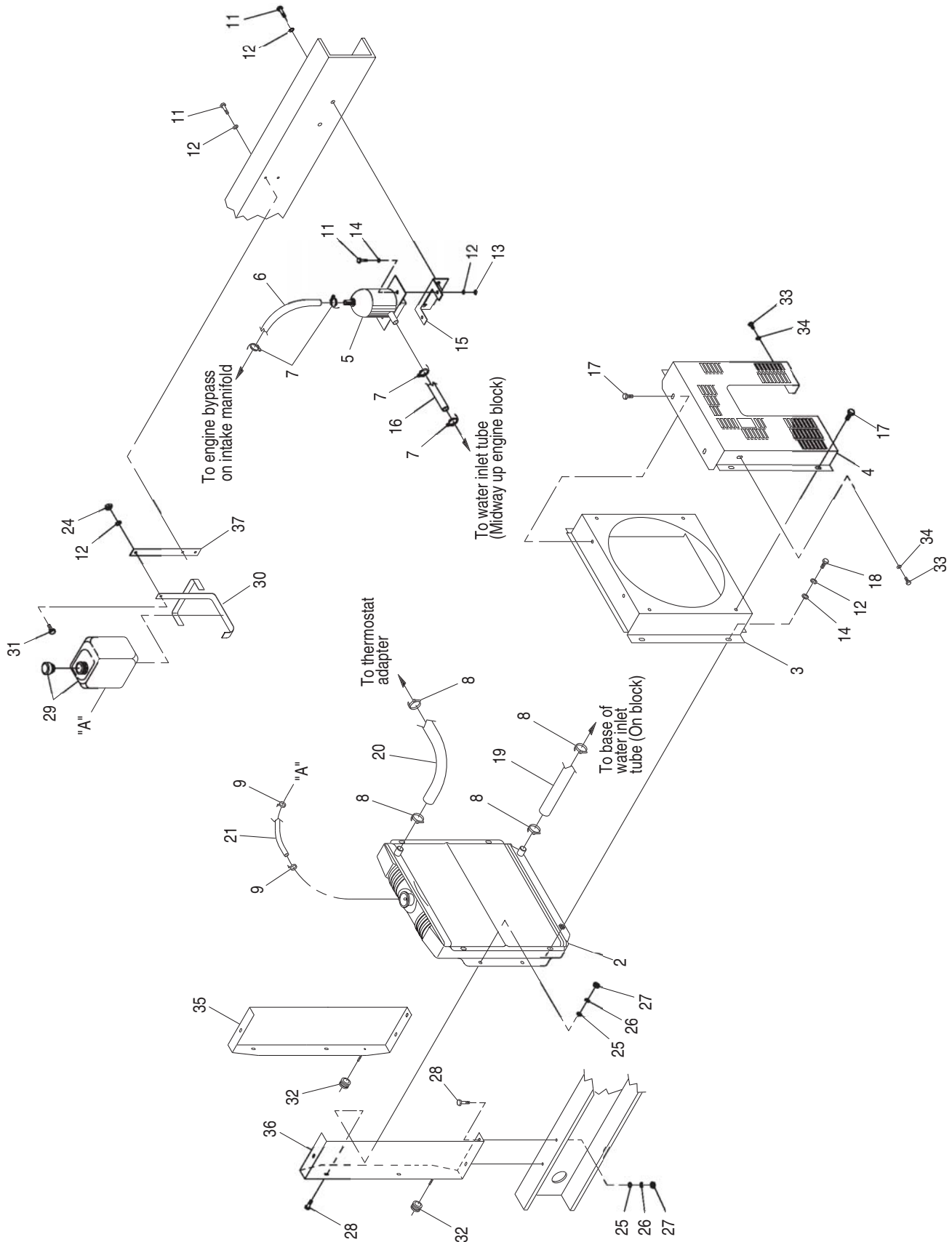


ITEM	PART NO.	QTY.	DESCRIPTION
1	0A6272	1	SUPPORT RADIATOR
2	0A5734	1	RADIATOR 1.5L
3	0A6237	1	VENTURI 1.5L MODINE
4	0A6238	1	GUARD FAN 1.5L MODINE
5	084918	1	HEATER ENGINE 0500W 120V
6	050967	1	HOSE 5/8 ID RIA 250F 12"
7	057823	4	CLAMP HOSE #10 .56 - 1.06
8	099502	4	CLAMP HOSE #24 B1.06 - 2.00
9	083709	2	CLAMP WIRE HOSE .573 - .551
10	052250	1	TAPE FOAM 1 X 1 14'
11	042568	4	SCREW HHC M6-1.0 X 20 G8.8
12	022097	13	WASHER LOCK M6-1/4
13	049813	2	NUT HEX M6 X 1.0 G8 YEL CHR
14	022473	11	WASHER FLAT 1/4 ZINC
15	084427	1	BRACKET HEATER
16	050967	1	HOSE 5/8 ID RIA 250F 18"
17	075443	6	SCREW CRMPIT 1/4-20 X 5/8
18	056892	4	SCREW CRIMPTITE 10-24 X 3/8
19	0A6284	1	HOSE - LOWER RADIATR
20	0A6258	1	HOSE - UPPER RADIATR
21	029032	1	HOSE 9/32 ID
22	031669	4	BOLT CARR 1/4-20 X 1-3/4 JS500
23	060035	4	SPACER .41 X .75 X .87 ST/ZNC
24	022127	5	NUT HEX 1/4-20 STEEL
25	022145	4	WASHER FLAT 5/16 ZINC
26	022129	4	WASHER LOCK M8-5/16
27	045771	4	NUT HEX M8-1.25 G8 YEL CHR
28	042907	4	SCREW HHC M8-1.25 X 16 G8.8
29	076749	1	TANK COOLANT RECOVERY
30	080712	1	BRACKET COOLANT RECOVERY TANK
31	0A7215	1	SCREW SWAGE 1/4-20 X 5/8 N WA JS500
32	0A7275	6'	FOAM 1.5 X 1 ADHESIVE BACKING
33	0A2111	2	SCREW SWAGE 10-32 X 5/16 Z/YC
34	065852	2	SPRING CLIP HOLDER .37-.62



**Section 8 - Exploded Views and Parts**

**Guardian Liquid-cooled 15 kW, 20 kW and 25 kW Generators  
Exploded View - Radiator (25 kW) - Drawing No. 0C1406-C**



Section 8 - Exploded Views and Parts

Guardian Liquid-cooled 15 kW, 20 kW and 25 kW Generators  
Exploded View – Radiator (25 kW) – Drawing No. 0C1406-C



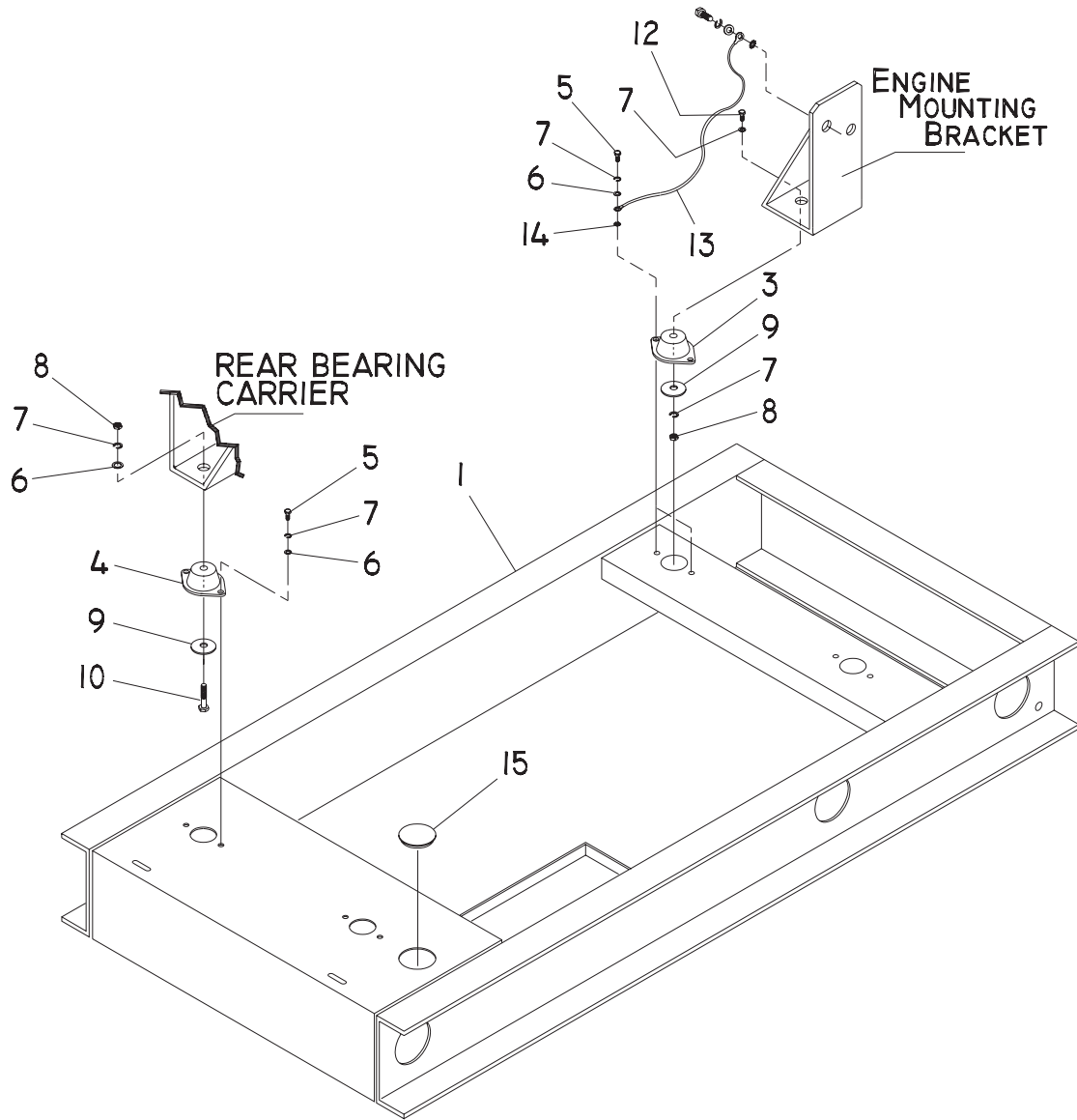
ITEM	PART NO.	QTY.	DESCRIPTION
2	0A5734	1	RADIATOR 1.5L
3	0A6237	1	VENTURI 1.5L
4	0A6238	1	GUARD FAN
5	084918	1	HEATER 500W 1020
6	050967	12"	HOSE RES 5/8 RIA 250F
7	057823	4	CLAMP HOSE #10 .56 - 1.06
8	099502	4	CLAMP HOSE #24 1.06 - 2.00
9	083709	2	CLAMP WIRE HOSE .573 - .551
11	042568	6	SCREW HHC M6-1.0 X 20 G8.8
12	022097	11	WASHER LOCK M6-1/4
13	049813	2	NUT HEX M6 -1.0 G8 YEL CHR
14	022473	7	WASHER FLAT M6-1/4 ZINC
15	084427	1	BRACKET HEATER
16	050967	18"	HOSE RES 5/8 RIA 250F
17	075443	6	CRMP TIT 1/4-20 X 5/8
18	056892	4	CRMP TIT 10-24 X 3/8
19	0A6284	1	HOSE LOWER RADIATOR
20	0A6258	1	HOSE UPPER RADIATOR
21	029032	1	HOSE 9/32 ID
24	022127	1	NUT HEX 1/4-20 STEEL
25	022145	8	WASHER FLAT 5/16 ZINC
26	022129	8	WASHER LOCK M8-5/16
27	045771	8	NUT HEX M8-1.25 G8 YEL CHR
28	042907	8	SCREW HHC M8-1.25 X 16 G8.8
29	076749	1	TANK COOLANT RECOVERY
30	080712	1	BRACKET COOLANT RECOVERY TANK
31	0A7215	1	SCREW SW 1/4-20 X 5/8 N WA JS500
32	030486	2	GROMMET 7/16 X 1/16 X 1/4
33	0A2111	2	SCREW SWAGE 10-32 X 5/16 Z/YC
34	065852	2	NUT SPRINGCLIP .37 - .62
35	0C1067A	1	SUPPORT RADIATOR RH
36	0C1067	1	SUPPORT RADIATOR LH
37	0C1480	1	BRACKET COOLANT BOTTLE



**Section 8 - Exploded Views and Parts**

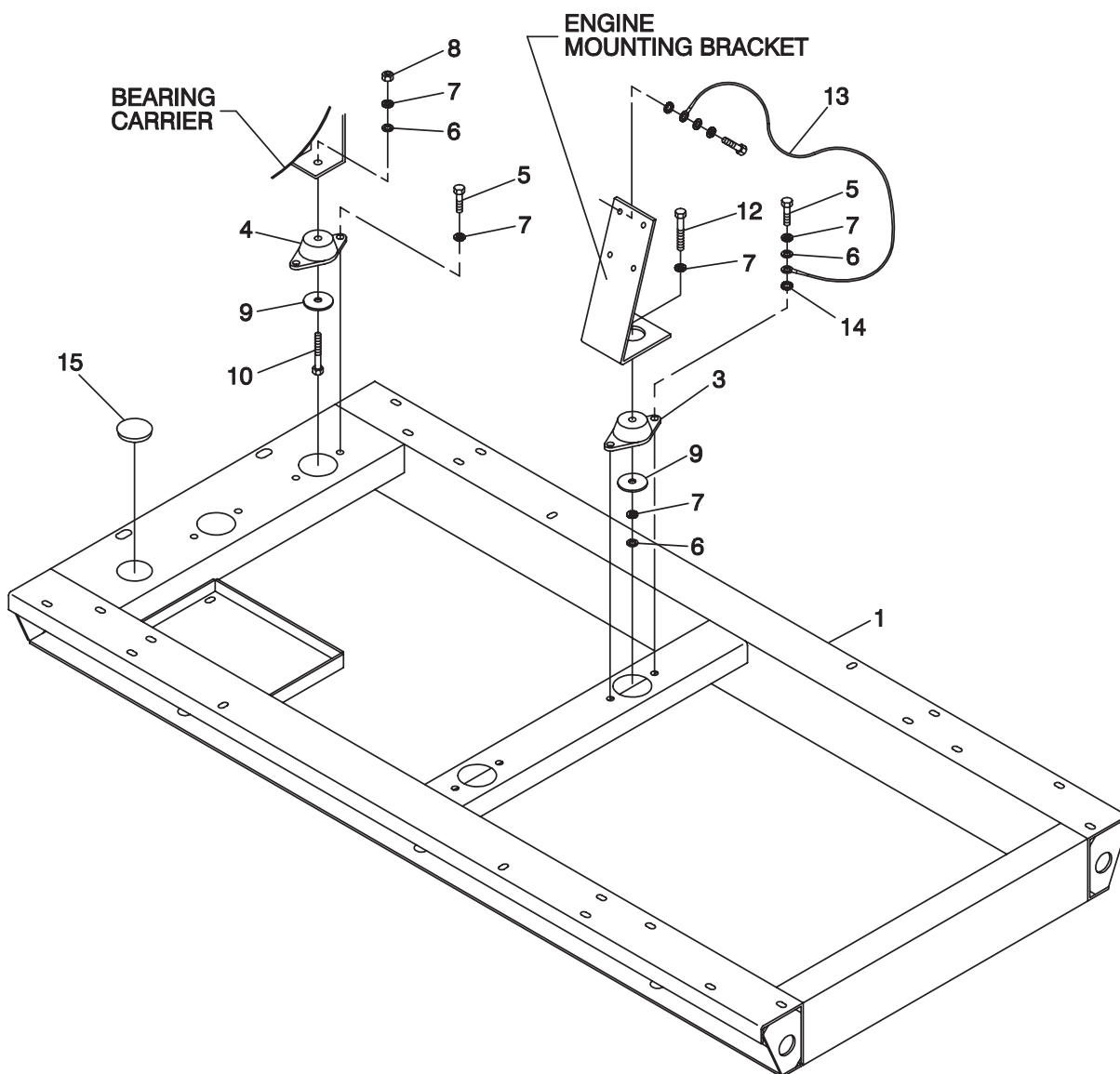
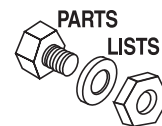
**Guardian Liquid-cooled 15 kW, 20 kW and 25 kW Generators**

**Exploded View – Mounting Base (15 & 20 kW) – Drawing No. 0A7187-A**



ITEM	PART NO.	QTY.	DESCRIPTION
1	C2632	1	BASE, MOUNTING
3	70936	2	ISOLATOR-VIBRATION
4	70936C	2	ISOLATOR, VIBRATION
5	39253	8	CAPSCREW, HEX HEAD-M8-1.25 x 20MM
6	22145	12	FLAT WASHER-M8
7	22129	12	LOCK WASHER-M8
8	45771	12	NUT, HEX-M8-1.25
9	71956	4	WASHER, VIBRATION ISOLATOR
10	51730	2	CAPSCREW, HEX HEAD-M8-1.25 x 60MM
12	57821	2	CAPSCREW, HEX HEAD-M8-1.25 x 40MM
13	21991	1	STRAP, GROUNDING
14	27482	1	WASHER-STAR 5/16"
15	A2308	1	PLUG-BUTTON

**Section 8 - Exploded Views and Parts**  
**Guardian Liquid-cooled 15 kW, 20 kW and 25 kW Generators**  
**Exploded View – Mounting Base (25 kW) – Drawing No. 0C1405-A**

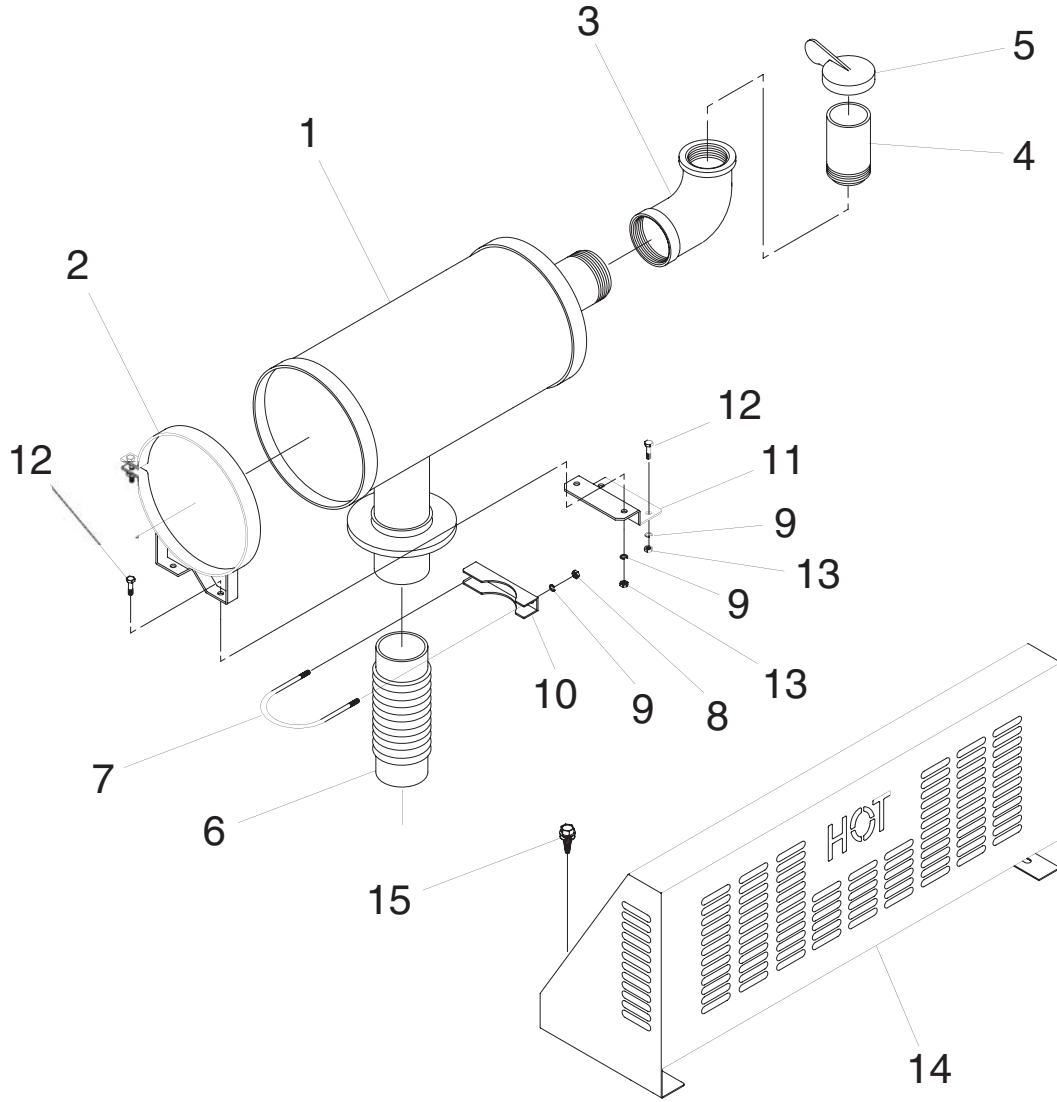


ITEM	PART NO.	QTY.	DESCRIPTION
1	0A9955	1	BASE MOUNTING
3	070936	2	DAMPENER VIBRATION
4	070936C	2	DAMPENER VIBRATION
5	039253	8	SCREW HHC M8-1.25 X 20 G8.8
6	022145	12	WASHER FLAT 5/16 ZINC
7	022129	12	WASHER LOCK M8-5/16
8	045771	12	NUT HEX M8-1.25 G8 YEL CHR
9	071956	4	WASHER FLAT M8
10	051730	2	SCREW HHC M8-1.25 X 60 G8.8
12	057821	2	SCREW HHC M8-1.25 X 40 G8.8
13	021991	1	EARTH STRAP
14	027482	2	WASHER SHAKEPROOF EXT 5/16 STL
15	0A2308	1	PLUG BUTTON 2" DIA



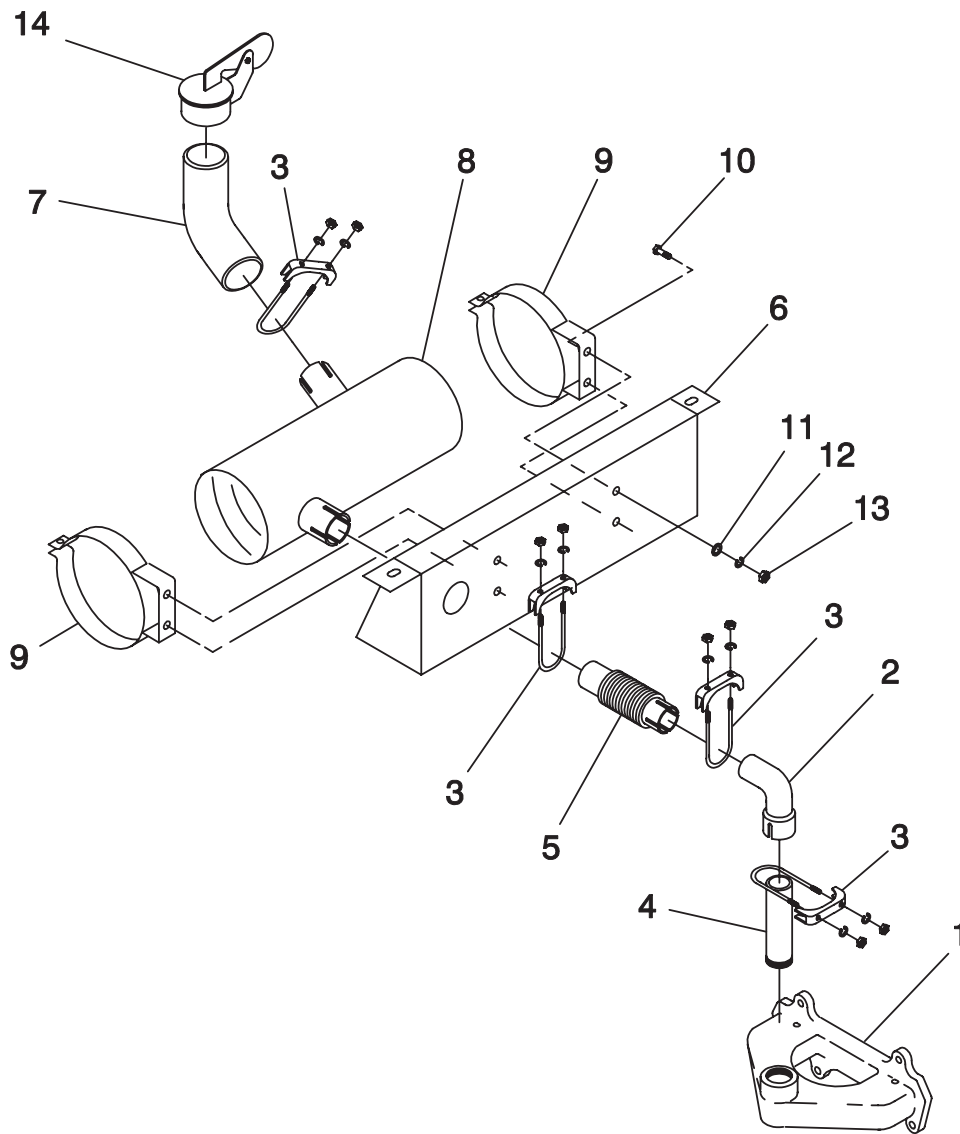
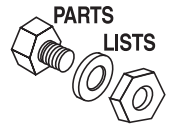
**Section 8 - Exploded Views and Parts**

**Guardian Liquid-cooled 15 kW, 20 kW and 25 kW Generators**  
**Exploded View – Muffler (15 & 20 kW) – Drawing No. 0A7618-B**



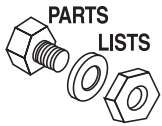
ITEM	PART NO.	QTY.	DESCRIPTION
1	020689	1	MUFFLER W/RAIN SHLD
2	060366	1	MUFFLR STRAP 6IN DIA
3	059933	1	ELBOW 90 DEG 2 NPT
4	080761	1	NIPPLE TOE 2 NPT X 4.5 BLK IRON
5	059939	1	RAIN CAP 2.37 I.D.
6	075546A	1	PIPE FLEX EXHAUST
7	036434	1	BOLT U 5/16-18 X 2.09
8	022259	2	NUT HEX 5/16-18 STEEL
9	022129	6	WASHER LOCK M8-5/16
10	036449	1	SADDLE 2 INCH
11	076032	1	CHANNEL MUFFLER SUPPORT
12	039253	4	SCREW HHC M8-1.25 X 20 G8.8
13	045771	4	NUT HEX M8-1.25 G8 YEL CHR
14	0C3683	1	GUARD MUFFLER (1.5L)
15	0A7215	4	SCREW SW 1/4-20 X 5/8 N WA JS500

**Section 8 - Exploded Views and Parts**  
**Guardian Liquid-cooled 15 kW, 20 kW and 25 kW Generators**  
**Exploded View - Muffler (25 kW) – Drawing No. 0C1408-B**



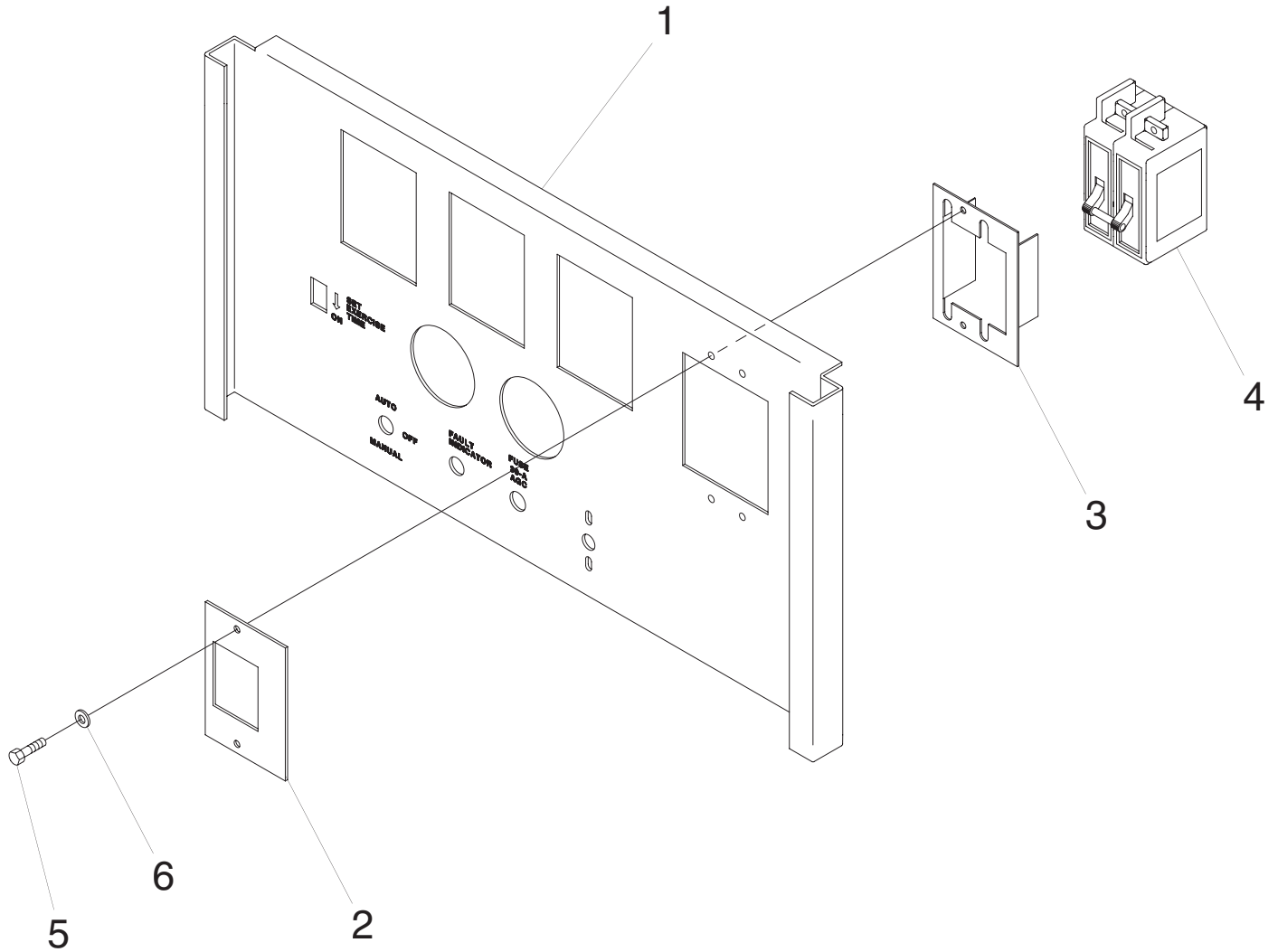
ITEM	PART NO.	QTY.	DESCRIPTION
1	0A4355	1	MANIFOLD EXHAUST 1.5L
2	0C1636	1	NIPPLE TOE 1.5 NPT X 6.5 BL IRON
3	036434	4	BOLT U 5/16-18 X 2.09
4	036449	4	SADDLE 2 INCH
4	0C1330	1	PIPE EXHAUST
5	0C1318	1	FLEX PIPE EXHAUST
6	0C1068	1	SUPPORT MUFFLER 1.5L
7	0C1412	1	ELBOW EXHAUST 45 DEG
8	0A5728	1	MUFFLER 1.6/1.5L SAE
9	060366	2	STRAP MUFFLER 6" DIA
10	066889	4	SCREW HHC M8 X 1.25 X 20MM
11	022145	4	WASHER FLAT 5/16 ZINC
12	022129	4	WASHER LOCK M8-5/16
13	045771	4	NUT HEX M8-1.25 G8 YEL CHR
14	0A8974	1	CAP RAIN 2"





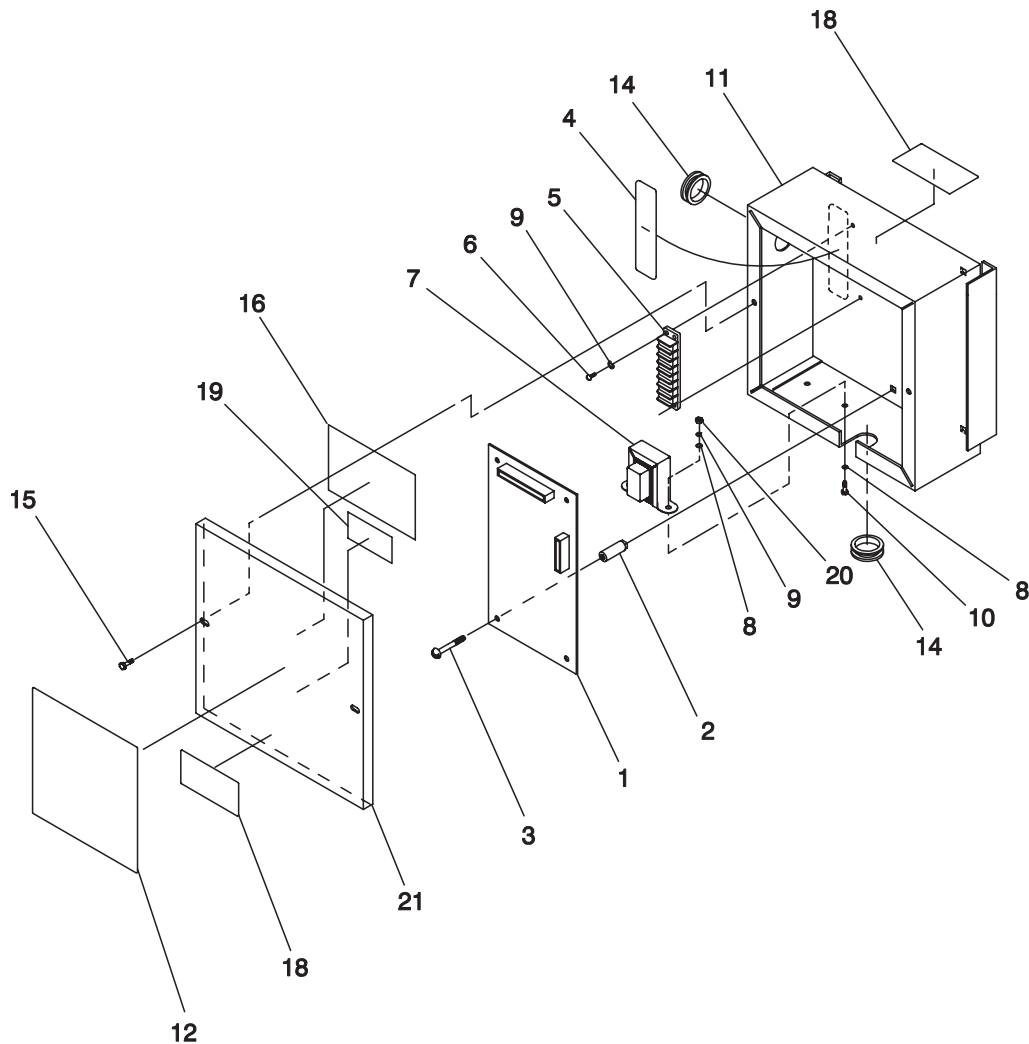
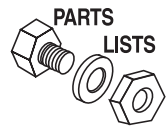
**Section 8 - Exploded Views and Parts**

**Guardian Liquid-cooled 15 kW, 20 kW and 25 kW Generators  
Exploded View – Circuit Breaker – Drawing No. 0D8294**



ITEM	PART NO.	QTY.	DESCRIPTION
1	0A2106	1	SILKSCREEN "P" PANEL
2	0A2952	1	COVER BQ CIRCUIT BREAKER
3	039782	1	BRACKET MOUNTING CIRCUIT BREAKER
4	048373	1	CIRCUIT BREAKER 70 X 2 240V 39782 BRKT
	039766	1	CIRCUIT BREAKER 90 X 2 240V 39782 BRKT
	0A2077	1	CIRCUIT BREAKER 125 X 2 120/240V 39783 BRKT
5	023965	2	SCREW RHM #8-32 X 3/8
6	022264	2	WASHER LOCK #8-M4

**Section 8 - Exploded Views and Parts**  
**Guardian Liquid-cooled 15 kW, 20 kW and 25 kW Generators**  
**Exploded View – CMA Assembly – Drawing No. 081086-D**



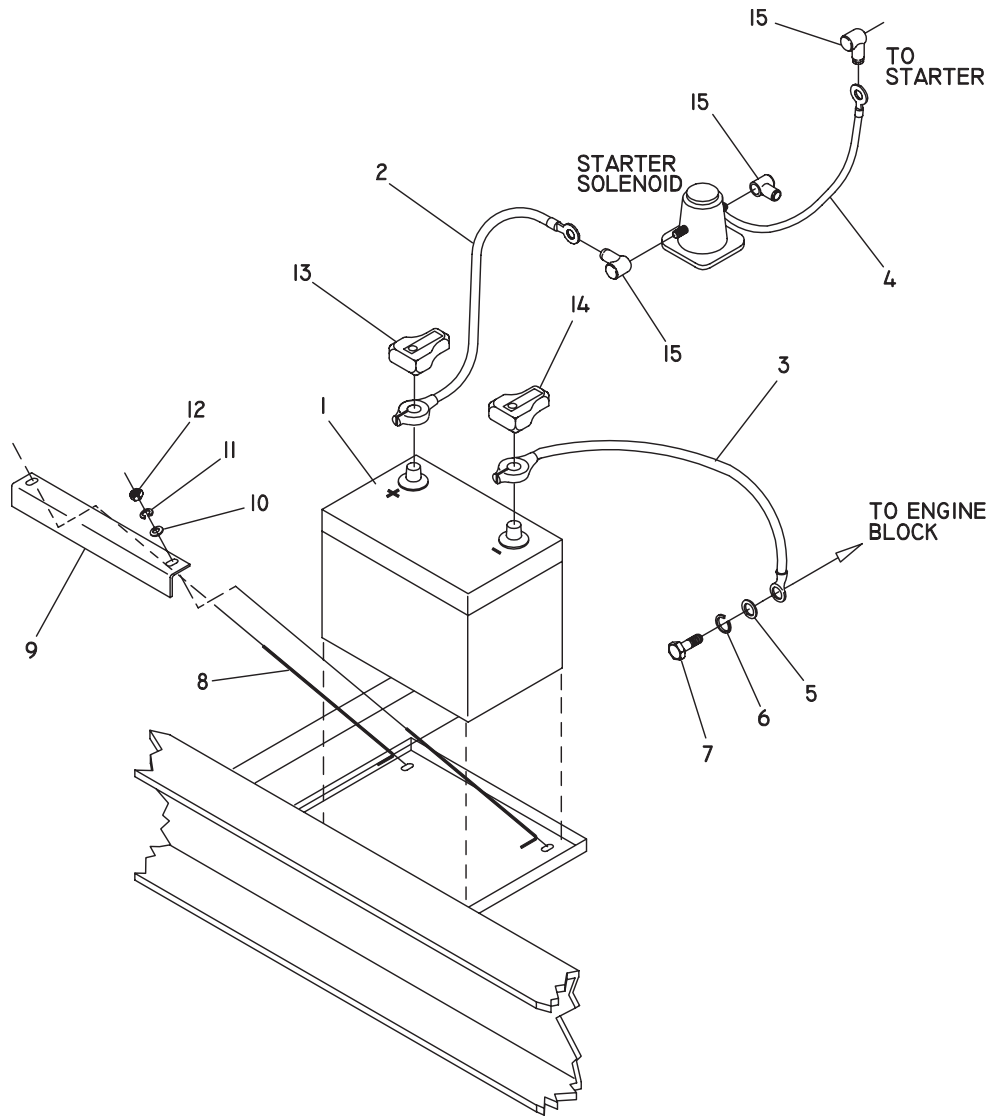
ITEM	PART NO.	QTY.	DESCRIPTION	ITEM	PART NO.	QTY.	DESCRIPTION
1	074100	1	ASSY HOME STDBY LOGIC (MODELS 921, 863, 865)	12	0A8504	1	DECAL, CMA LABEL
	076009A	1	PP LOGIC ASM 50/60HZ (MODEL 9428)		0A8504A	1	DECAL, CMA LABEL
2	072566	4	NUT SPACER .250 PCB	13*	022661V	.083'	TUBING SHRINK 19"ID RED
3	080882	4	SCREW PPH TAPPING #6X5/8 SS	14	038057	2	GROMMET 7/8 X 1/16 X 3/4
4	074978	1	DECAL TERMINAL STRIP	15	058443	2	SCREW CRIMPTITE 1/4-20 X 5/8
5	047822	1	BLOCK TERM 20A 7 X 6 X 1100V	16	081224	1	DECAL MFG NAMEPLATE
6	075476	2	SCREW PPHM M4-0.7 X 16	17*	079682	1	HARNESS CMA WIRE
7	083264	1	TRANSFORMER ASM CMA 240/12V	18	086093	2	DECAL CMA WARNING
8	022985	4	WASHER FLAT #6 ZINC	19	083736	1	DECAL CSA GTS
9	022264	4	WASHER LOCK M4	20	051715	2	NUT HEX M4-0.7 G8 YEL CHR
10	051787	2	SCREW HHC M4-0.7 X 16 G8.8	21	077401	1	COVER SILKSCREEN CMA
11	079847	1	BOX CMA				* NOT SHOWN



**Section 8 - Exploded Views and Parts**

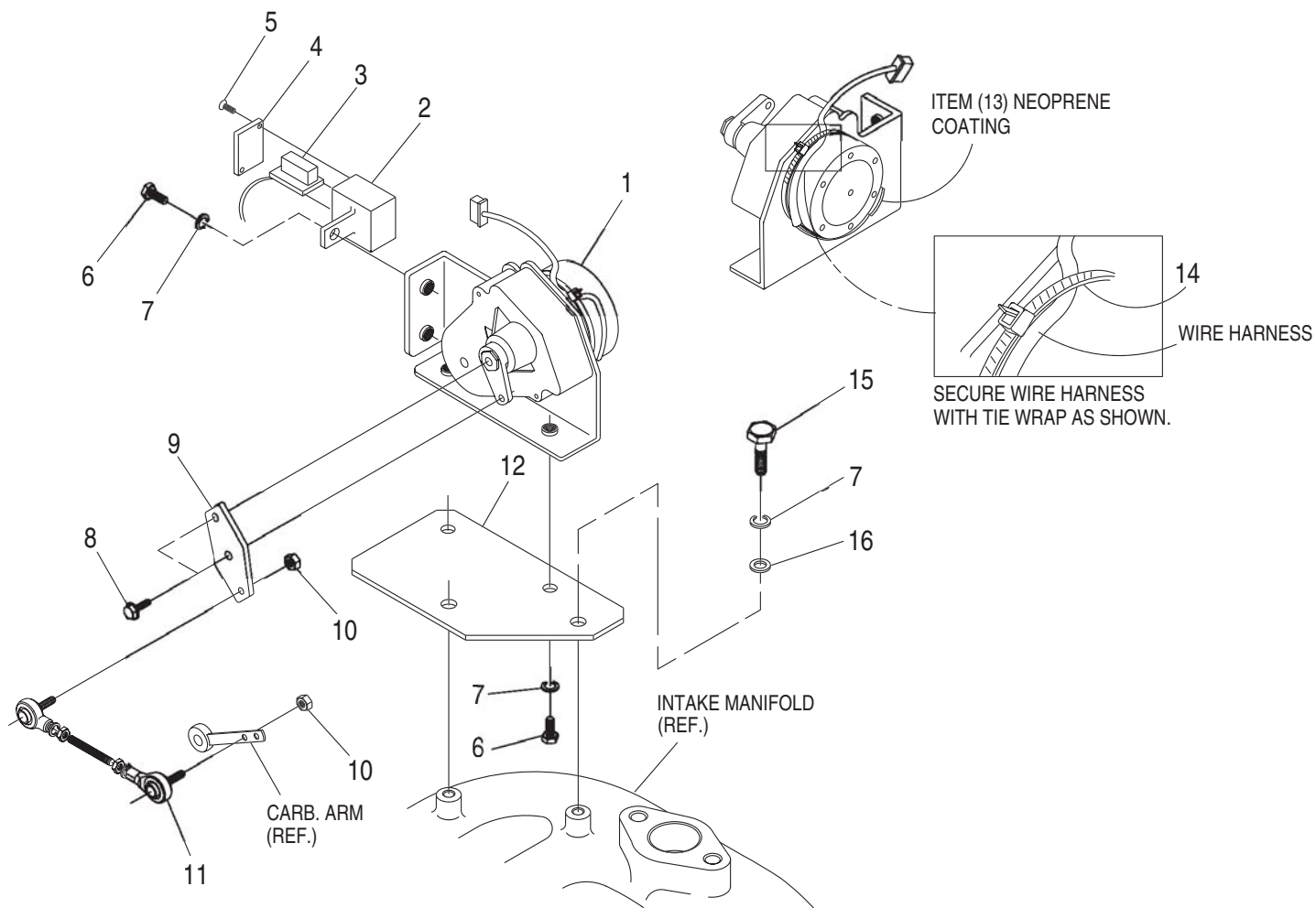
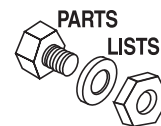
**Guardian Liquid-cooled 15 kW, 20 kW and 25 kW Generators**

**Exploded View – Battery – Drawing No. 098922-E**



ITEM	PART NO.	QTY.	DESCRIPTION
1	077483	1	BATT 12VDC 75-AH 26/26R
2	038804D	1	CABLE BATT RED #4 X 20.00
3	038805B	1	CABLE BATT BLK #4 X 23.00
4	0742600131	1	ASSY,WIRE#16 RED 1.6
5	022131	1	WASHER FLAT 3/8 ZINC
6	046526	1	WASHER LOCK M10
7	052213	1	SCREW HHC M10-1.25 X 20 G8.8
8	059567	2	BOLT BATTERY HOLD DOWN
9	078121	1	BAR BATTERY HOLDDOWN
10	022145	2	WASHER FLAT M8-5/16 ZINC
11	022129	2	WASHER LOCK 5/16
12	022259	2	NUT HEX 5/16-18 STEEL
13	050331A	1	BATTERY POST COVER (RED+)
14	050331	1	BATTERY POSTCOVER (BLACK-)
15	075763	3	BOOT, BATTERY CABLE

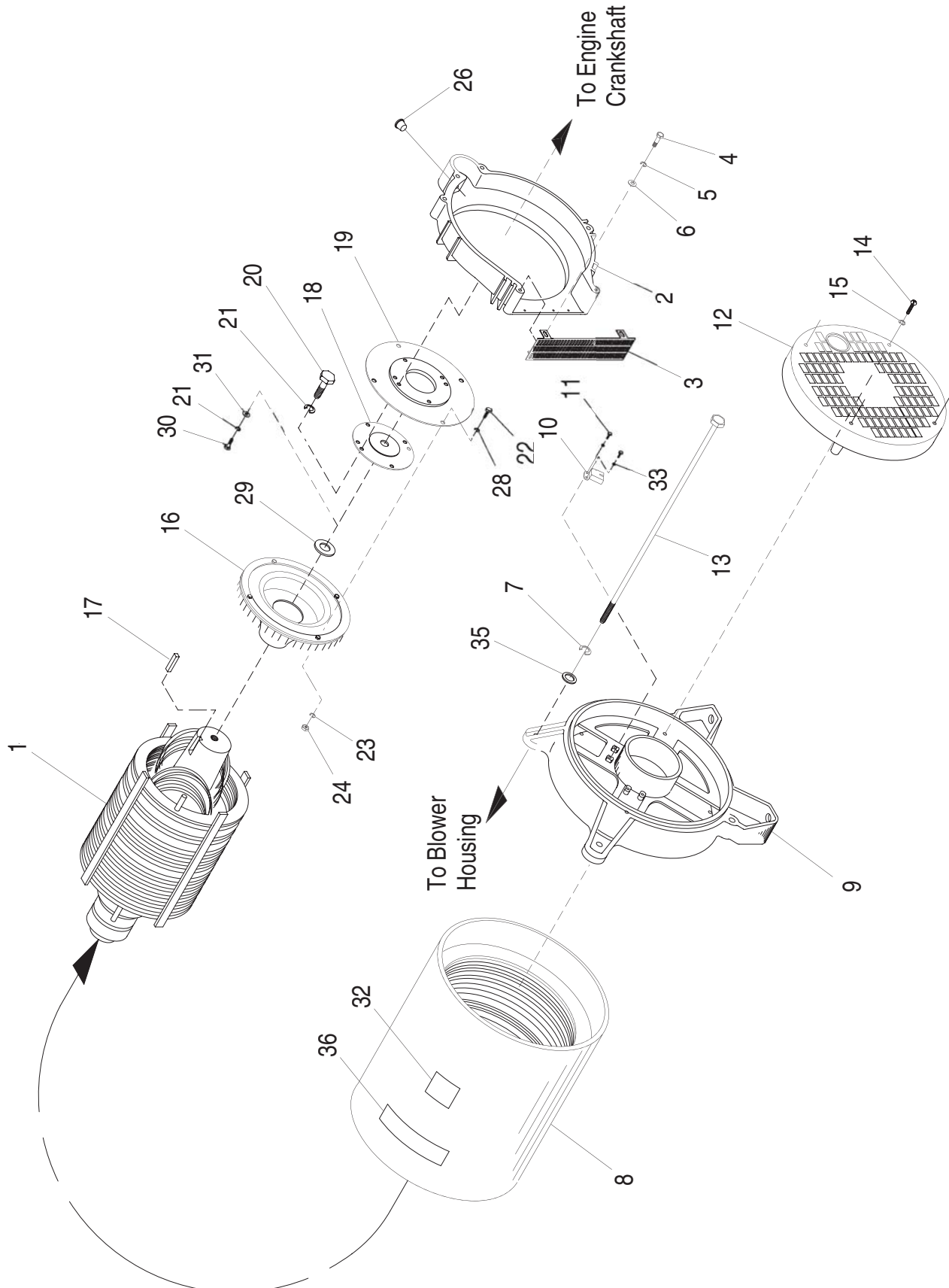
**Section 8 - Exploded Views and Parts**  
**Guardian Liquid-cooled 15 kW, 20 kW and 25 kW Generators**  
**Exploded View – Governor Assembly – Drawing No. 0A7216-B**



ITEM	PART NO.	QTY.	DESCRIPTION
1	098290	1	ASM MOTOR STEPPER
2	098941A	1	HOUSING GOVERNOR CONNECTOR
3	098958A	1	CONNECTOR INTERFACE ASSEMBLY
4	098942A	1	COVER CONNECTOR HOUSING
5	098225	2	SCREW FHM #2 X 5/8 SELF TAP
6	043146	3	SCREW HHC M6-1.0 X 10 G8.8
7	022097	5	WASHER LOCK M6-1/4
8	064526	2	SCREW TAP HWH #6-25 X 3/8 ZINC
9	098783	1	LEVER STEPPER MOTOR
10	037398	2	NUT LOCK HEX #10-32 NYL INS
11	0A7041	1	ASSEMBLY CARBURATOR LINKAGE
12	0A7106	1	BRACKET STEPPER MOTOR
13	074031	-	LIQUID NEOPRENE
14	029333A	1	TIE WRAP 7.4"X.19" BLK UL
15	022507	2	SCREW HHC 1/4-20 X 1/2 G5
16	022473	2	WASHER FLAT 1/4 ZINC

Section 8 - Exploded Views and Parts

Guardian Liquid-cooled 15 kW, 20 kW and 25 kW Generators  
Exploded View - Generator - Drawing No. 0A9348-F



**Section 8 - Exploded Views and Parts**  
**Guardian Liquid-cooled 15 kW, 20 kW and 25 kW Generators**  
**Exploded View – Generator – Drawing No. 0A9348-F**

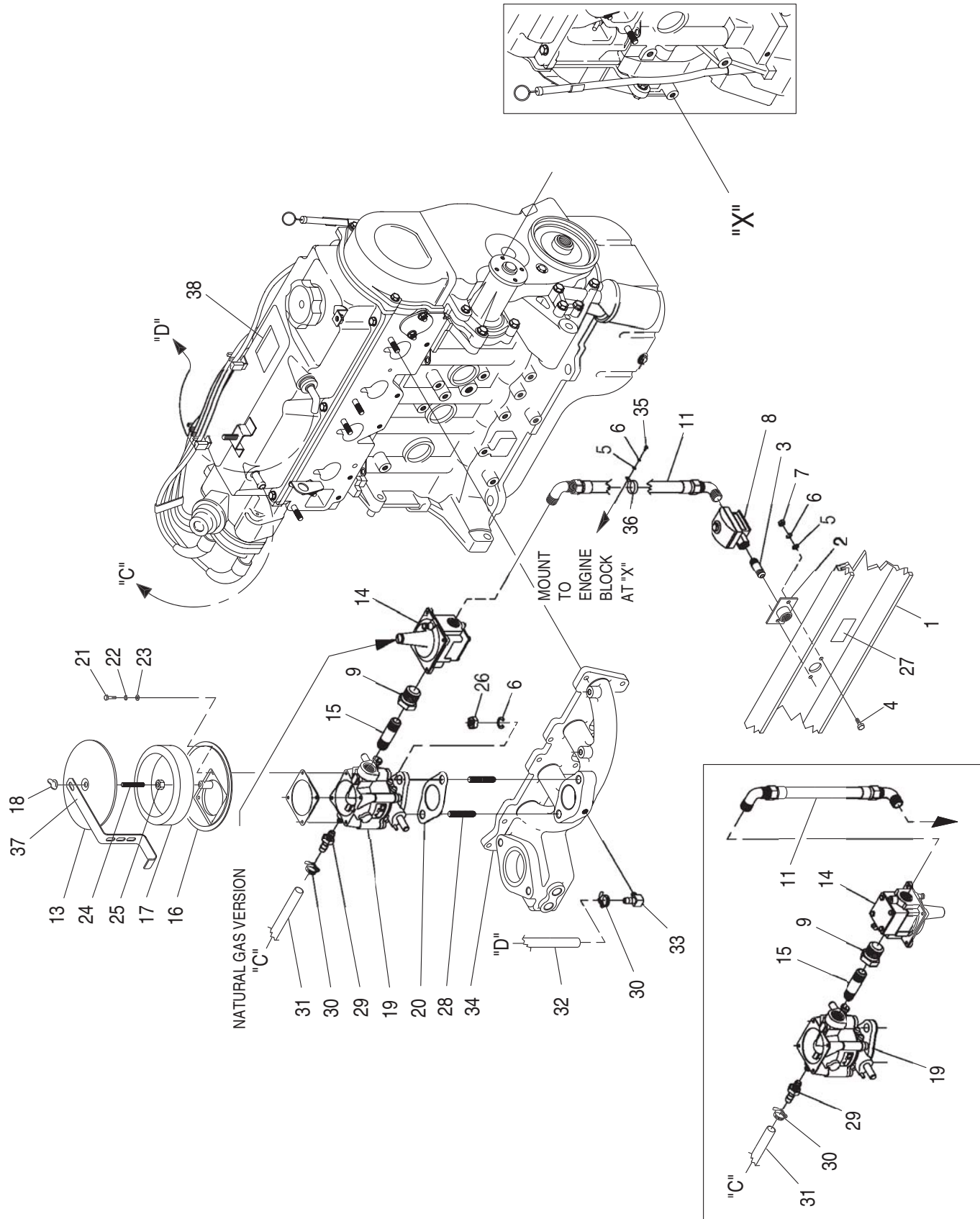


ITEM	PART NO.	QTY.	DESCRIPTION
1	098671	1	ASSY ROTOR 10KW
	098681	1	ASSY ROTOR 15KW
	098675	1	ASSY ROTOR 20KW
	098936	1	ASSY ROTOR 25KW
2	0A5336A	1	HOUSING BLOWER
3	0A1659	1	SCREEN AIR OUTLET
4	071912	4	SCREW PPHM M5-0.8 X 8 SS
5	049226	4	WASHER LOCK M5
6	051713	4	WASHER FLAT M5
7	022129	4	WASHER LOCK M8-5/16
8	098672	1	ASSY STATOR 10KW A
	098673	1	ASSY STATOR 10KW D
	098674	1	ASSY STATOR 10KW GJK
	098682	1	ASSY STATOR 15KW 1PH A
	098683	1	ASSY STATOR 15KW 3PH D
	098684	1	ASSY STATOR 15KW 1PH GJK
	098676	1	ASSY STATOR 20KW 1PH A
	098677	1	ASSY STATOR 20KW 1PH D
	098678	1	ASSY STATOR 20KW 1PH GJK
	097620	1	ASSY STATOR 25KW 1PH A
	098937	1	ASSY STATOR 25KW 1PH D
	097621	1	ASSY STATOR 25KW 3PH D
	9	0A5382	1
10	075591	1	ASSY HOLDER BRUSH
11	075476	4	SCREW PPHM M4-0.7 X 16
12	0A5601	1	COVER REAR BEARING CARRIER
13	075554B	4	BOLT STATOR X 16" LG
14	0A9375	4	SCREW RHM #10-24 X 2
15	022152	4	WASHER LOCK #10
16	097146	1	FAN & RING GEAR ASSEM.
17	042558	1	KEY SQ 3/8 X 1 STEEL
18	0A5061	1	SPACER-FLEX PLATE
19	0A4989	1	PLATE, FLEX
20	053557	1	SCREW HHC M12-1.75 X 40 G8.8
21	051769	6	WASHER LOCK M12
22	049541	4	SCREW HHC M10-1.5 X 35 G8.8
23	046526	4	WASHER LOCK M10
24	045772	4	NUT HEX M10-1.5 G8 YEL CHR
26 *	087599	1	PLUG PLASTIC 3/8 NPT
27	077043E	1	FLEX CONDUIT 1" BLACK (NOT SHOWN)
28	022131	4	WASHER FLAT 3/8-M10 ZINC
29	072578	1	SPACER ROTOR SHAFT
30	0A7043	5	SCREW HHC M12-1.25 X 25 G8.8
31	049808	5	WASHER FLAT M12
32	058589	1	DECAL WARN ENG START
33	023365	4	WASHER SHAKEPROOF INT #8
35	0A8830	4	WASHER FLAT .34 ID X .75 OD
36	072080	1	DECAL, DANGER STANBY UNITS

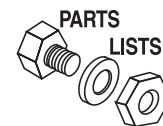
\* USED ON PRE-PACKAGED UNITS ONLY

Section 8 - Exploded Views and Parts

Guardian Liquid-cooled 15 kW, 20 kW and 25 kW Generators  
Exploded View - Gaseous Fuel System - Drawing No. 0C1667-F



**Section 8 - Exploded Views and Parts**  
**Guardian Liquid-cooled 15 kW, 20 kW and 25 kW Generators**  
**Exploded View – Gaseous Fuel System – Drawing No. 0C1667-F**



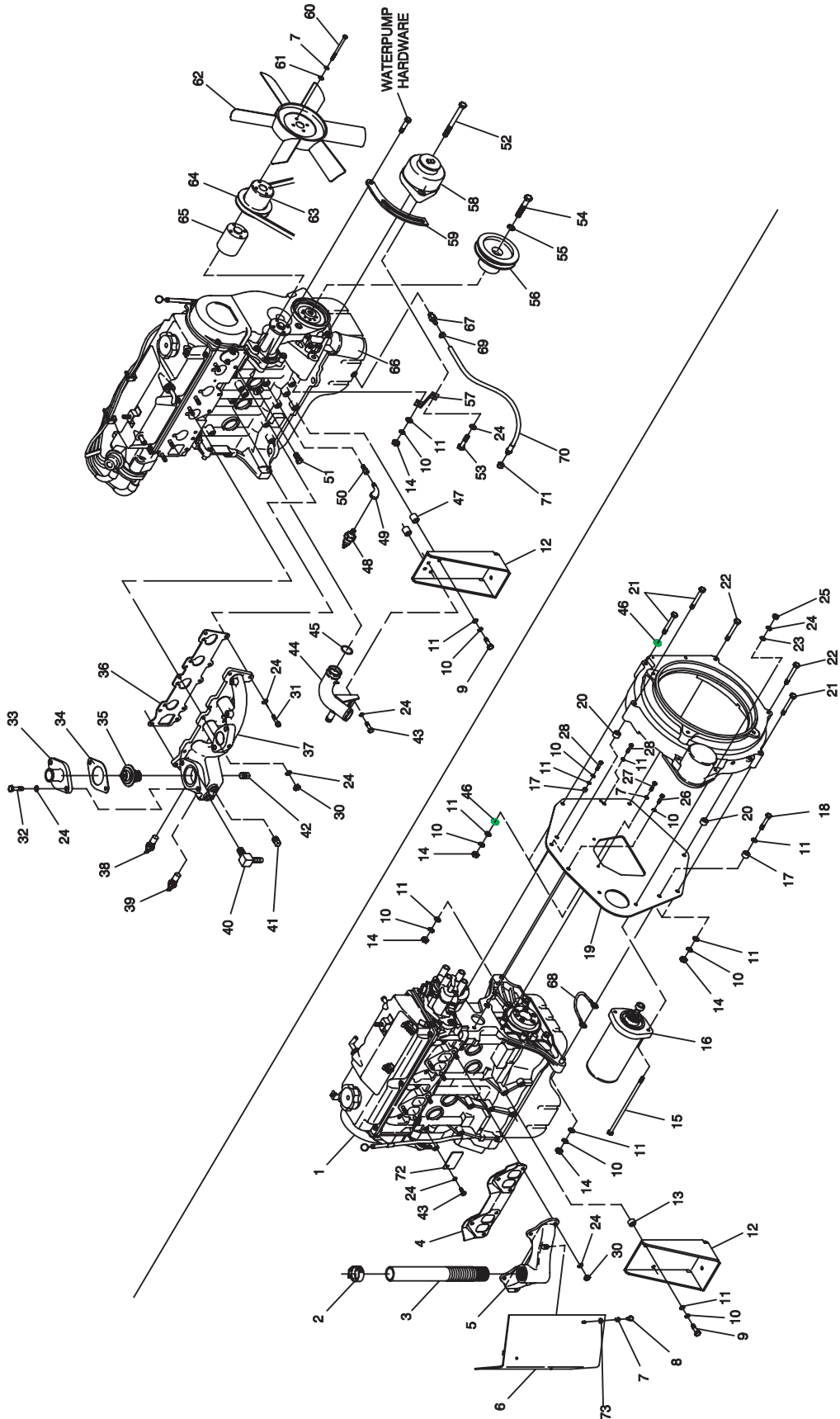
ITEM	PART NO.	QTY.	DESCRIPTION
1 *	-----	1	WELDMENT MOUNTING BASE
2	075580	1	FLANGE FUEL INLET
3	026915	1	NIPPLE CLOSE 3/4 X 1.375
4	039253	2	SCREW HHC M8-1.25 X 20 G8.8
5	022145	5	WASHER FLAT 5/16 ZINC
6	022129	5	WASHER LOCK M8-5/16
7	045771	2	NUT HEX M8-1.25 G8 YEL CHR
8	0A2666	1	SOLENOID GAS FUEL
9	046747	1	BUSHING REDUCER 3/4 TO 3/8
11	0C3714	1	ASSY HOSE NG/LPV. 31"
13	0A5547	1	COVER AIR CLEANER
14	0C1475	1	REGULATOR NATURAL GAS EM
	0A9911	1	REGULATOR L.P. GAS EM
15	0A7989	1	NIPPLE PIPE 3/8 NPT X 4 BL IRON
16	0A6593	1	ADAPTOR - CARBURETOR
17	059402	1	FILTER ELEMENT
18	037561	1	NUT WING 1/4-20 NYLK
19	059403	1	CARBURETOR CA55 EM
20	059401	1	CARBURETOR GASKET
21	076011	4	SCREW PRHM #10-24 X 1/2
22	022152	4	WASHER LOCK #10
23	023897	4	WASHER FLAT #10 ZINC
24	062522	1	STUD TH 1/4-20 X 3 G2 ZNC FULL
25	022127	1	NUT HEX 1/4-20 STEEL
26	022259	2	NUT HEX 5/16-18 STEEL
27	050279	1	DECAL FUEL INLET NG
28	028717	2	STUD 5/16-18 X 1.5 F THR
29	052219	1	BARBED STR 1/8 NPT X 5/16
30	048031C	4	CLAMP HOSE BAND 1/4
31	029032	1	HOSE 9/32 ID 6.5"
32	029032	1	HOSE 9/32 ID 11"
33	032552	1	BARBED EL 90 5/16 X 1/8 NPT
34	0A4682	1	MANIFOLD INTAKE 1.5 MACH. PART
35	042907	1	SCREW HHC M8-1.25 X 16 G8.8
36	055934D	1	CLAMP VINYL 1.06 X .406 Z
37	0A7040	1	BRACKET-RAD HOSE
38	0D8492J	1	DECAL EMISSION (10-15KW NATURAL GAS UNITS)
	0D8492K	1	DECAL EMISSION (10-15KW LP VAPOR UNITS)

\* SHOWN IN OTHER VIEW



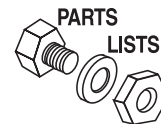
Section 8 - Exploded Views and Parts

Guardian Liquid-cooled 15 kW, 20 kW and 25 kW Generators  
Exploded View - Engine Compartment - Drawing No. 0A7642-J



Section 8 - Exploded Views and Parts

Guardian Liquid-cooled 15 kW, 20 kW and 25 kW Generators  
Exploded View – Engine Compartment – Drawing No. 0A7642-J



ITEM	PART NO.	QTY.	DESCRIPTION	ITEM	PART NO.	QTY.	DESCRIPTION
1	0A4531	1	ENGINE-1.5L	39	0A6751	1	SW-TMP 245DEG 3/8NPT
2	035685	1	CLAMP HOSE #28 1.32 - 2.25	40	034339	1	BARBED EL 90 3/8NPT X 5/8
3	075546A	1	PIPE-FLEX EXHAUST	41	0D4788	1	PLUG STD PIPE 3/8 STEEL SQ HD
4	0A45310258	1	GASKET-EXHAUST MANIFOLD	42	061012	1	PLUG STD PIPE 1/8 SCKT HD
5	0A4355	1	MANIFOLD-EXHAUST	43	039253	6	SCREW HHC M8-1.25 X 20 G8.8
6	0A6699	1	SHIELD HEAT EXHAUST	44	0A5110	1	PIPE WATER-INLET
7	022097	8	WASHER LOCK M6-1/4	45	0A7006	1	O-RING 1-1/16X1-5/16X1/8
8	022507	2	SCREW HHC 1/4-20 X 1/2 G5	46	025507	2	WASHER SHAKEPROOF EXT 7/16 STL
9	052212	4	SCREW HHC M10-1.25 X 25 G8.8	47	022500B	2	SPACER .41X.75X.25 ST/ZNC
10	046526	14	WASHER-LOCK-M10	48	0A8584	1	SWITCH OIL PRESSURE
11	022131	16	WASHER FLAT 3/8 ZINC	49	036277	1	ELBOW 90D STREET 1/8
12	0C2499	2	STAMPING ENG FOOT	50	042574	1	ADAPTOR 1/8NPTF TO 1/8-28
13	055993	1	SPACER .41 X .75 X .12 STL/ZNC	51	026073A	1	PLUG STD PIPE 1/4 STEEL SQ HD
14	045772	4	NUT HEX M10-1.5 G8 YEL CHR	52	0A6701	1	SCREW HHC M10-1.5 X 110 G8.8
15	023586	2	SCREW SHC 5/16-18 X 2 G8.8 NZ	53	039414	1	SCREW HHC M8-1.25 X 35 G8.8
16	020692	1	STARTER-12V	54	0A5568	1	SCREW HHC M12-1.25 X 55 G8.8
17	0A7005	2	SPACER .56 X 1 X .37 ST/ZNC	55	051769	1	WASHER LOCK M12
18	052243	1	SCREW HHC M10-1.5 X 60 G8.8	56	0A4804	1	PULLEY-CRANKSHAFT (1800 RPM)
19	0A4772	1	ENGINE PLATE		0A4800	1	PULLEY-CRANKSHAFT (3600 RPM)
20	070901	2	SLEEVE DOWEL BLHSG	57	0A5839	1	BRACKET - ALT SUPPRT
21	051735	3	SCREW HHC M10-1.5 X 70 G8.8	58	0A1354B	1	DC ALTERNATOR-12V
22	056768	2	SCREW HHC M10-1.5 X 90 G8.8	59	0A4839	1	ARM ADJUST ALTERNATOR
23	022145	2	WASHER FLAT 5/16 ZINC	60	055816	4	SCREW HHC M6-1.0 X 70 G8.8
24	022129	23	WASHER LOCK M8-5/16	61	049811	4	WASHER FLAT M6
25	022259	2	NUT HEX 5/16-18 STEEL	62	075614	1	FAN ENG PUSHER 6/380
26	052213	1	SCREW HHC M10-1.25 X 20 G8.8	63	0A2628	1	PULLEY - FAN 95 DIA
27	047411	2	SCREW HHC M6-1.0 X 16 G8.8	64	0A5275	1	V-BELT 3/8 X 32-1/8 1.5L
28	052830	2	SCREW HHC M10-1.25 X 45 G8.8		0A5586	1	V-BELT 3/8 X 28.9 1.5L
30	045771	10	NUT HEX M8-1.25 G8 YEL CHR	65	0A4814	1	SPACER PULLEY
31	058306	5	SCREW SHC M8-1.25 X 25 G12.9	66	0A45310244	1	FILTER OIL
32	030795	2	SCREW HHC 5/16-18 X 1 G5	67	0C1852	1	ADAPTER DRAIN OIL
33	0A2711A	1	ADAPTER-THERMOSTAT	68	0912970066	1	GROUND WIRE (STARTER)
34	048665	1	GASKET THERMOSTAT	69	070928	1	CLAMP HOSE - OIL DRAIN
35	075885	1	THERMOSTAT 195 DEG	70	069860C	1	HOSE ASM.-OIL DRAIN
36	0A45310257	1	GASKET INLET MANIFOLD	71	069811	1	CAP HEX 1/4NPT BRASS
37	0A4682	1	MANIFOLD-INTAKE	72	0A5317	1	NAMEPLATE ENGINE
38	057522	1	SENSOR COOLANT LEVEL	73	022473	2	WASHER FLAT 1/4 ZINC