

GENERAC®

POWER SYSTEMS, INC.

Owner's Manual

GUARDIAN™
by GENERAC POWER SYSTEMS

Liquid-cooled, Prepackaged
Standby Generators

Model Numbers

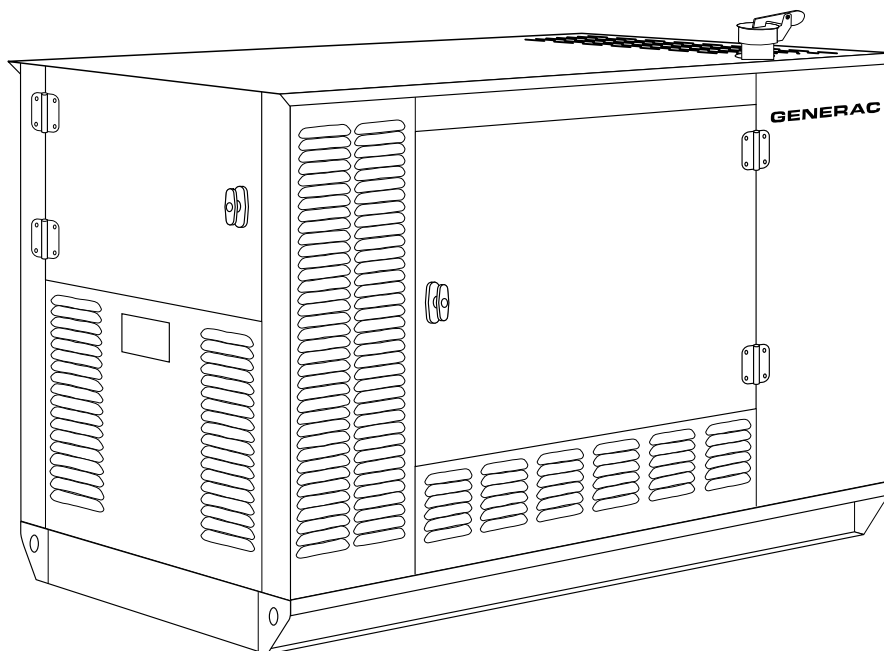
(Natural Gas)

004090-2	004091-2
004092-2	004093-2
004094-2	004095-2
004096-2	004097-2

004474-0 (w/TS)

(Liquid Propane Vapor)

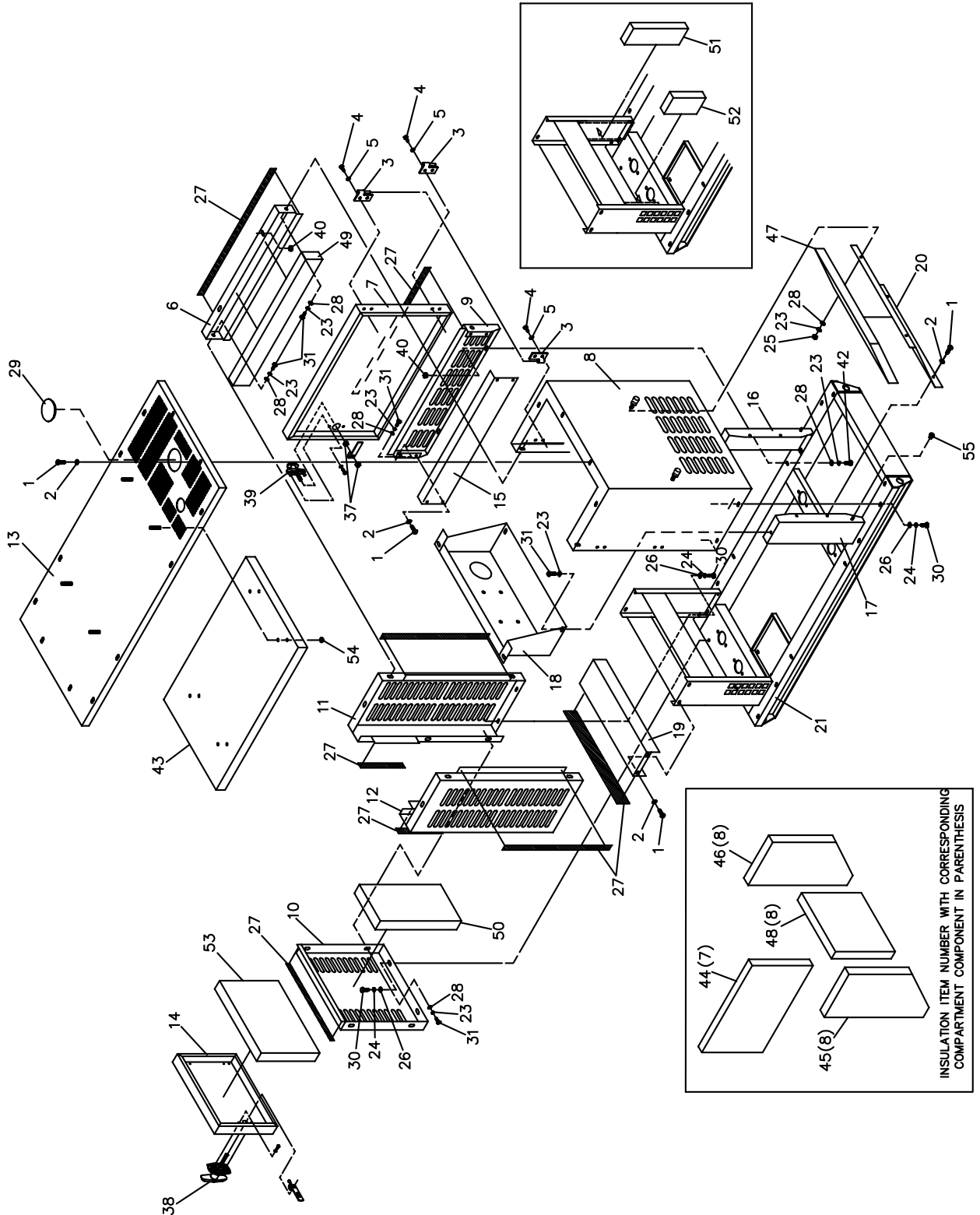
004124-1	004125-1
004126-1	004127-1
004128-1	004130-1
004131-1	
004475-0 (w/TS)	



**ONLY QUALIFIED ELECTRICIANS OR CONTRACTORS
SHOULD ATTEMPT INSTALLATION!!**

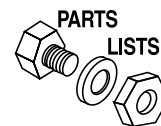
Section 7 - Exploded Views and Parts

**Guardian Liquid-cooled 10 kW, 15 kW, 20 kW and 25 kW Generators
Exploded View – Enclosure – Drawing No. 0C1404A**



Section 7 - Exploded Views and Parts

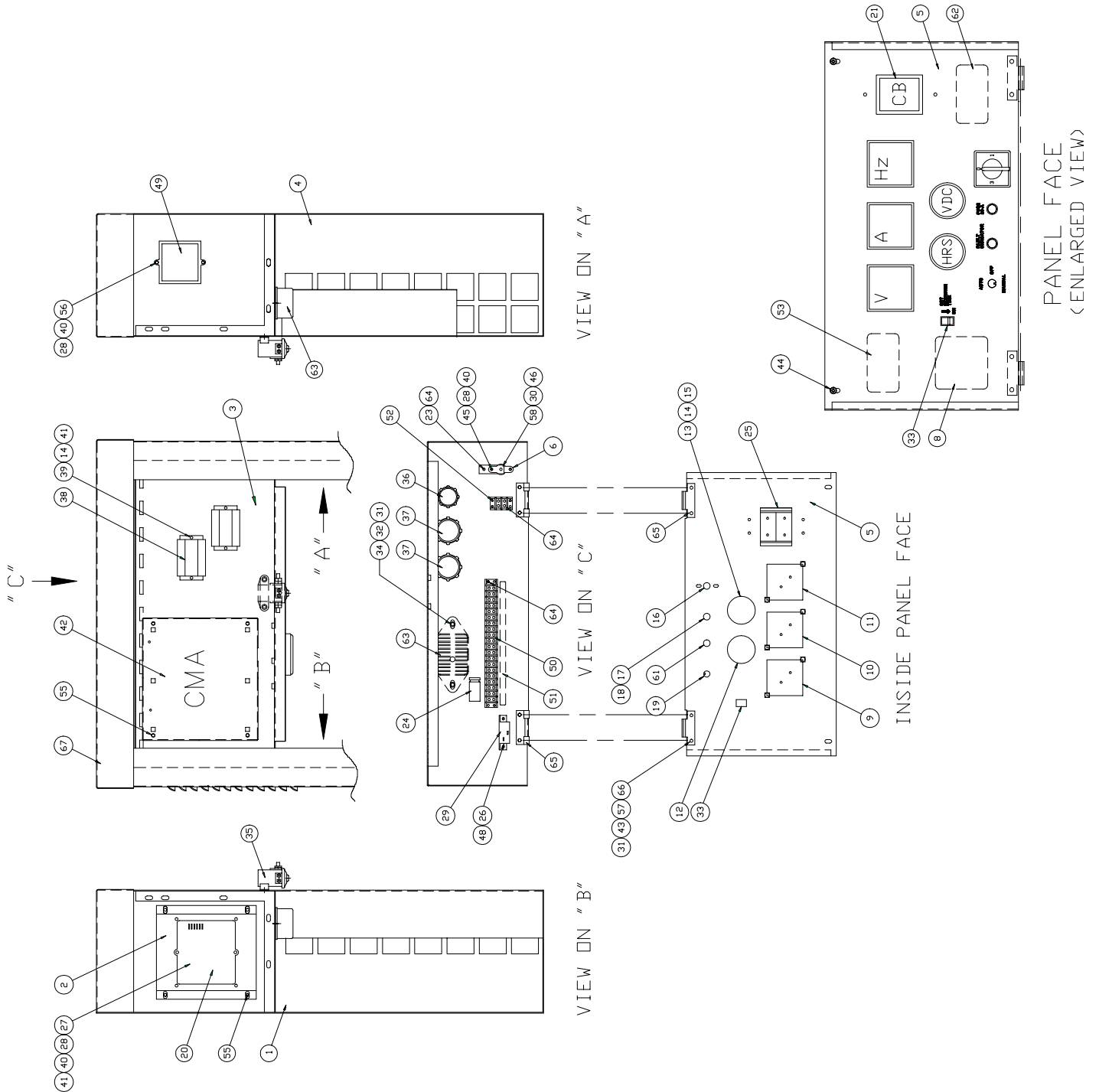
Guardian Liquid-cooled 10 kW, 15 kW, 20 kW and 25 kW Generators
Exploded View – Enclosure – Drawing No. 0C1404A



ITEM	PART NO.	QTY.	DESCRIPTION	ITEM	PART NO.	QTY.	DESCRIPTION
1	A2110	32	1/4"-20-1/2" FASTENER	24	22129	12	LOCKWASHER, 5/16"-M8
2	A2115	32	1/4" NYLON WASHER	25	22127	4	NUT, 1/2"-20
3	A3133A	4	SLIP HINGE, MALE L.H.	26	22145	12	FLAT WASHER, 5/16"-M8
	A3133B	4	SLIP HINGE, FEMALE L.H.	27	89961	24ft.	FOAM STRIP, 3/4" x 1/4"
	A3133C	2	SLIP HINGE, MALE R.H.	28	22473	20	FLAT WASHER, 1/4"-M6
	A3133D	2	SLIP HINGE, FEMALE R.H.	29	82570	1	PLUG BUTTON 4"
4	A3359	24	BHSCS M6 x 16 S.S.	30	39253	12	HHCS, M8-1.25 x 20
5	A3360	24	SHAKEPROOF, INT M6 S.S.	31	42568	14	HHCS, M6-1.0 x 20LG
6	C1245	1	PANEL, TOP SIDE L.H.	35	49813	4	NUT, HEX M6-1.0
	C1245A	1	PANEL, TOP SIDE R.H.	37	37337	4	HEX NUT JAM-3/8"-24
7	A3449	2	DOOR, SIDE	38	A6807	1	LATCH & CAM (REWORK)
8	A4822	1	PANEL, FRONT	39	57042	2	LATCH AND CAM
9	A4823	2	PANEL, SIDE BOTTOM	40	67577	4	SPEED NUT 1/4"-20
10	A4824	1	PANEL, REAR	42	22413	4	1/4"-20 x 1 HHCS
11	A4825	1	CORNER POST, REAR L.H.	43	C1053B	1	INSULATION, PANEL TOP
12	A4826	1	CORNER POST, REAR R.H.	44	C1053A	2	INSULATION, DOOR
13	C1193	1	TOP, ENCLOSURE	45	C1053E	1	INSULATION, PANEL, FRONT R.H.
14	A4831	1	DOOR, REAR	46	C1053F	1	INSULATION, PANEL, FRONT L.H.
15	A4832	2	DUCT	47	C1063G	1	INSULATION, DUCT, FRONT
16	C1067	1	RADIATOR, SUPPORT-L.H.	48	C1053H	1	INSULATION, PANEL, FRONT TOP
17	C1067A	1	RADIATOR, SUPPORT-R.H.	49	C1053D	2	INSULATION, PANEL, SIDE
18	C1068	1	SUPPORT, MUFFLER	50	C1053J	1	INSULATION, PANEL, REAR
19	C8817	1	TOP-CONTROL PANEL-SAE	51	C1053K	1	INSULATION, DUCT, L.H. SIDE
20	C1244	1	FRONT AIR DUCT	52	C1053L	1	INSULATION, DUCT, R.H. SIDE
21	A9955	1	BASE, MOUNTING	53	C1053M	1	INSULATION, DOOR, REAR
22	C1053Z	1	KIT, INSULATION 1.5L	54	78115	14	WASHER, SELF LOC/DOME
23	22097	16	LOCKWASHER, 1/4"-M6	55	30486	2	RUBBER GROMMET

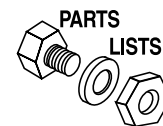
Section 7 - Exploded Views and Parts

**Guardian Liquid-cooled 10 kW, 15 kW, 20 kW and 25 kW Generators
Exploded View – Control Panel – Drawing No. 0C8847B**



Section 7 - Exploded Views and Parts

Guardian Liquid-cooled 10 kW, 15 kW, 20 kW and 25 kW Generators
Exploded View – Control Panel – Drawing No. 0C8847B

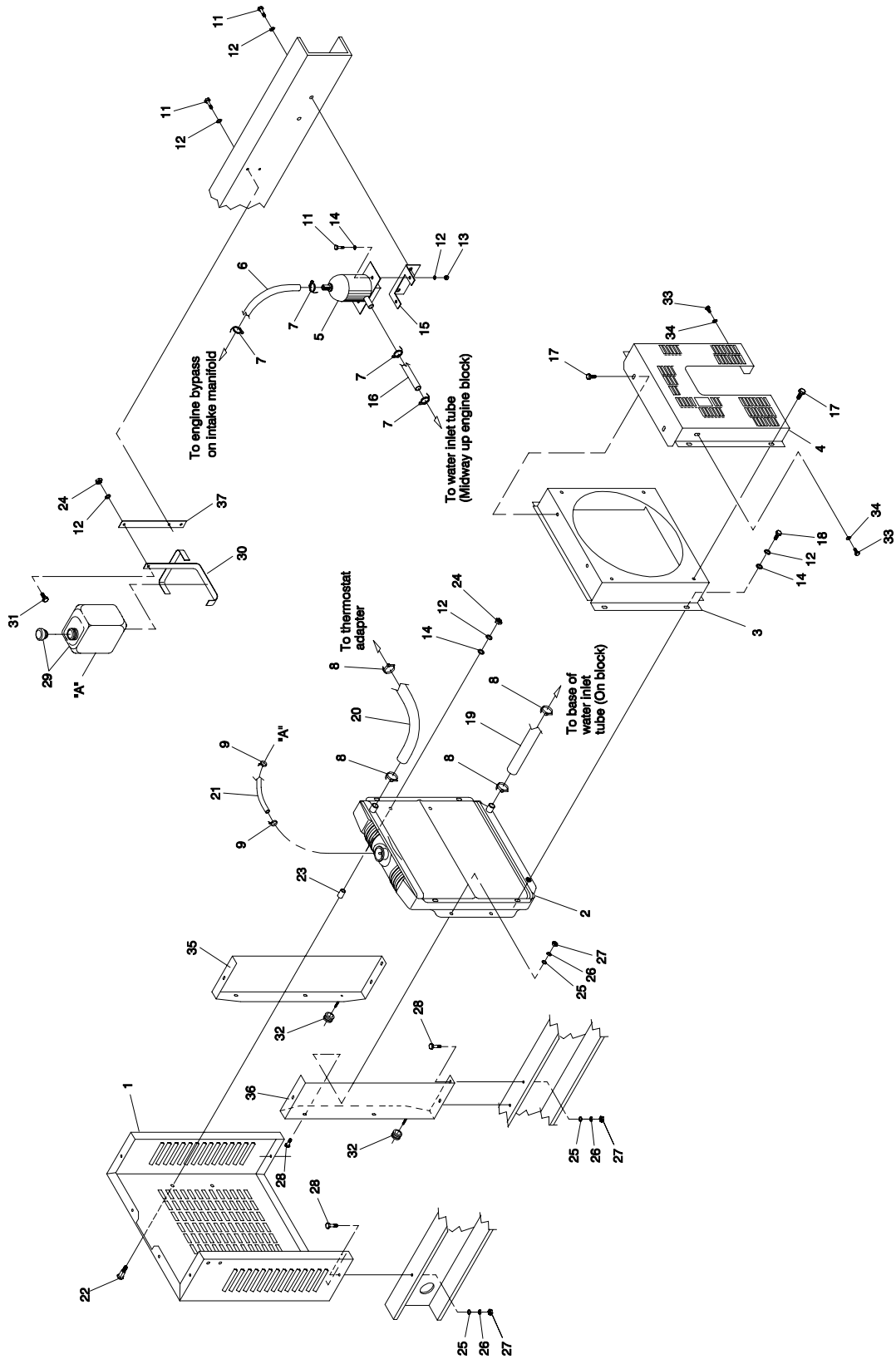


ITEM	PART NO.	QTY.	DESCRIPTION	ITEM	PART NO.	QTY.	DESCRIPTION
1	0C5077	1	SUPPORT, CONTROL PANEL L.H.	35	056739	1	RELAY SOLENOID 12VDC PNL MNT
2	075589	1	BRACKET, VOLTAGE REGULATOR	36	072252	2	GROMMET 1.37 X .06 X 1.00
3	0A1775	1	CONTRLPANEL-BACK	37	063212	1	GROMMET 1.75 X .12 X 1.50
4	0C5078	1	SUPPORT CONTROL PANEL R.H.	38	058318	2	TRANSFRM 150A TO 5A 5VA
5	0C4224A	1	SILKSCREEN, PANEL (SAE)	39	033121	2	SCREW HHM 10-32 X 1/2
6	057073	1	BLOCK JUNCTION 3/8-16	40	049226	4	WASHER LOCK M5
7	022985	4	WASHER FLAT #6 ZINC	41	023897	10	WASHER FLAT #10 ZINC
8	081988	1	DECAL EXERCISE INFO	42	075595	1	ASSM.,CMA BOX
9	070043	1	VOLTMETER AC 0-300	43	049811	8	WASHER FLAT M6
10	070055	1	AMMETER AC 0-100	44	072355	2	HHCS M6-1X12-A/C-.HD
11	070042	1	FREQUENCY METER 55-65HZ	45	055440	1	SCREW HHC M5-0.8 X 25 G8.8
12	070081	1	HOURMETER	46	022241	1	NUT HEX 3/8-16 STEEL
13	076037	1	VOLTMETER DC 8-18V	48	022155	2	WASHER LOCK #6
14	022152	10	WASHER, LOCK #10	49	098647	1	ASSY L.C. ELECT GOV
15	022158	10	NUT, HEX #10-32 STEEL	50	057335	1	BLOCK TERM 20A 20 X 6 X 1100V
16	061945	1	SWITCH 6A AMP/V SELECTOR	51	021480	1	DECAL TERMINAL STRIP
17	032300	1	HOLDER, FUSE	52	048766	1	BLOCK TERM 20A 2 X 6 X 1100V
18	022668	1	FUSE 30A X AGC30 HLDR22669 HKP	53	058589	1	DECAL WARN ENG START
19	076020	1	SWITCH DPDT 15/10 SP ON-OFF-ON	54*	070882	1	ASSY SUPPRESSION
20	083048	1	ASY POTTED REG WOFIN	55	0A7215	10	SCREW SW 1/4-20X5/8 N WA JS500
21	0A2077	1	CIRCT BRK 125X2 120/240V	56	076040	2	SCREW PPHM M5-0.8 X 16
22	075476	14	SCREW, PPHM-M4-0.7 x 16MM	57	049813	8	NUT HEX M6-1.0 G8 YEL CHR
23	022264	14	WASHER, LOCK-M4	58	061979	1	BUS BAR
24	0A3968	1	CAPACITOR, FILTER ASSY.	59*	0A2833	1	HARNESS PNL "PP" 1P
25	039782	1	BRACKET CIRCT BRK MOUNTING	60*	0A6821	1	HARNESS WIRING (1.5L)
26	0C2323	2	SCREW TAPTITE PH 6-32X5/8 ZYC	61	064009	1	LIGHT 12VDC .02A LED RED PILOT
27	076039	2	SCREW PPHM M5-0.8 X 40	62	064009	1	DECAL, TRANS. SWITCH CONN.
28	051756	3	SCREW HHC M10-1.5 X 20 G8.8	63	0A1354A	1	REGULATOR - DC ALT
29	048476	1	CIRCT BRK 4.5X1 AUT30KW CNT45K	64	0C2212	6	SCREW TAPTITE PH M4-0.7X16 ZYC
30	022237	1	WASHER LOCK 3/8	65	0C3826	2	HINGE, CONTROL PANEL
31	022097	8	WASHER LOCK M6-1/4	66	0C4427	8	M6X1.0X12 T.H.M.S SS
32	022473	8	WASHER FLAT 1/4 ZINC	67	0C8817	1	TOP, CONTROL PANEL (SAE)
33	082573	1	SWITCH DPST 5 125V SPD RCKR				
34	043116	4	SCREW HHC M6-1.0 X 12 G8.8				

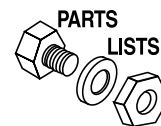
*NOT SHOWN ON THIS ASSEMBLY

Section 7 - Exploded Views and Parts

**Guardian Liquid-cooled 10 kW, 15 kW, 20 kW and 25 kW Generators
Exploded View – Radiator – Drawing No. OC1406B**



Section 7 - Exploded Views and Parts
 Guardian Liquid-cooled 10 kW, 15 kW, 20 kW and 25 kW Generators
 Exploded View – Radiator – Drawing No. 0C1406B



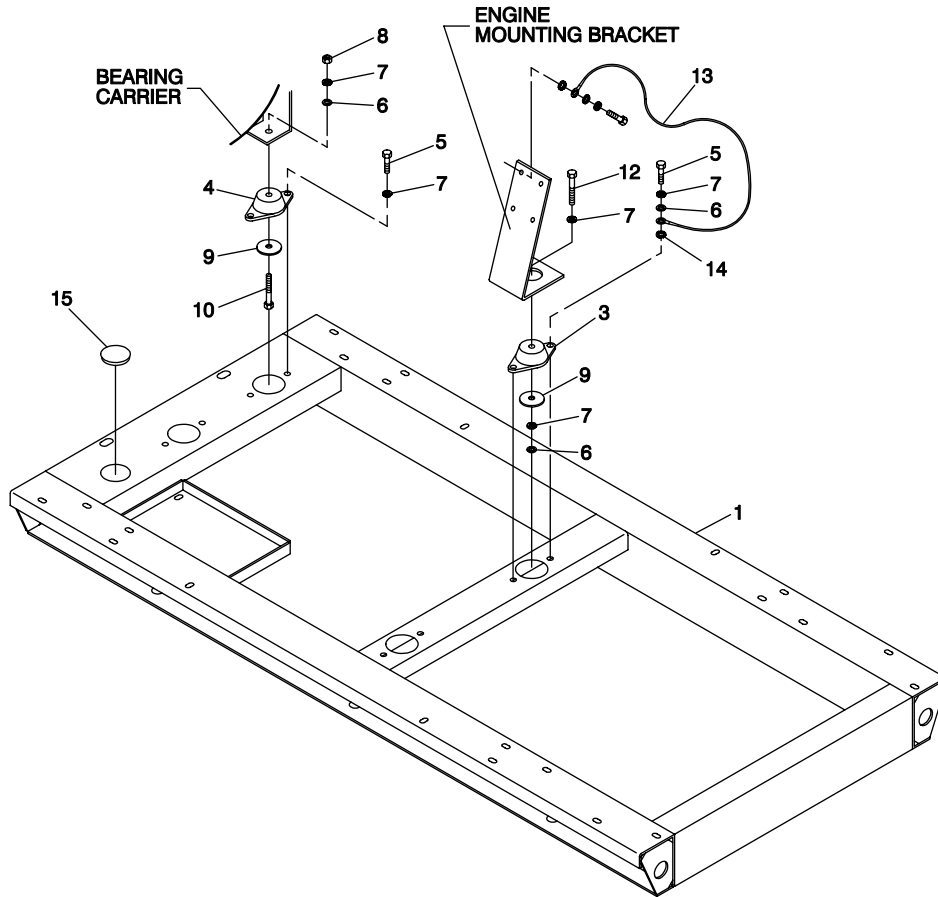
ITEM	PART NO.	QTY.	DESCRIPTION
1	0A4822	1	PANEL FRONT
2	0A5734	1	RADIATOR 1.5L
3	0A6237	1	VENTURI 1.5L
4	0A6238	1	GUARD FAN
5	084918	1	HEATER 500W 1020
6	050967	12"	HOSE RES 5/8 RIA 250F
7	057823	4	CLAMP HOSE #10 .56 - 1.06
8	099502	4	CLAMP HOSE #24 1.06 - 2.00
9	083709	2	CLAMP WIRE HOSE .573 - .551
11	042568	6	SCREW HHC M6-1.0 X 20 G8.8
12	022097	15	WASHER LOCK M6-1/4
13	049813	2	NUT HEX M6 -1.0 G8 YEL CHR
14	022473	11	WASHER FLAT M6-1/4 ZINC
15	084427	1	BRACKET HEATER
16	050967	18"	HOSE RES 5/8 RIA 250F
17	075443	6	CRMPTIT 1/4-20 X 5/8
18	056892	4	CRMPTIT 10-24 X 3/8
19	0A6284	1	HOSE LOWER RADIATOR
20	0A6258	1	HOSE UPPER RADIATOR
21	029032	1	HOSE 9/32 ID
22	031669	4	BOLT CARR 1/4-20 X 1-3/4 JS500
23	060035	4	SPACER .41 X .75 X .87 ST/ZNC
24	022127	5	NUT HEX 1/4-20 STEEL
25	022145	12	WASHER FLAT 5/16 ZINC
26	022129	12	WASHER LOCK M8-5/16
27	045771	12	NUT HEX M8-1.25 G8 YEL CHR
28	042907	12	SCREW HHC M8-1.25 X 16 G8.8
29	076749	1	TANK COOLANT RECOVERY
30	080712	1	BRACKET COOLANT RECOVERY TANK
31	0A7215	1	SCREW SW 1/4-20X5/8 N WA JS500
32	030486	2	GROMMET 7/16 X 1/16 X 1/4
33	0A2111	2	SCREW SWAGE 10-32 X 5/16 Z/YC
34	065852	2	NUT SPRINGCLIP .37 - .62
35	0C1067A	1	SUPPORT RADIATOR RH
36	0C1067	1	SUPPORT RADIATOR LH
37	0C1480	1	BRACKET COOLANT BOTTLE



Section 7 - Exploded Views and Parts

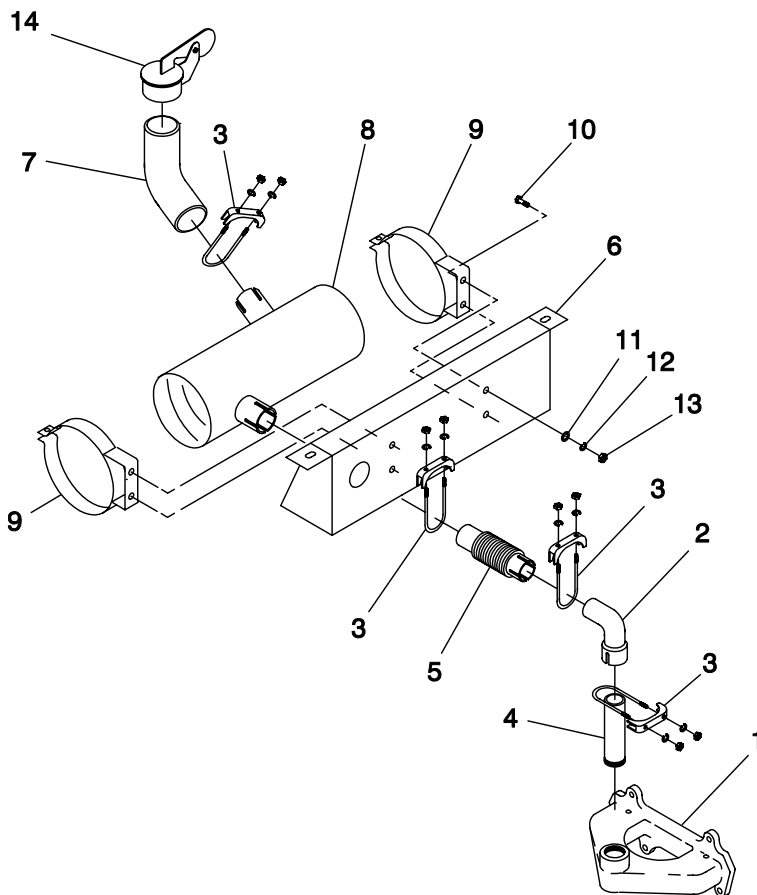
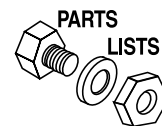
Guardian Liquid-cooled 10 kW, 15 kW, 20 kW and 25 kW Generators

Exploded View – Radiator – Drawing No. 0C1405A



ITEM	PART NO.	QTY.	DESCRIPTION
1	0A9955	1	BASE MOUNTING
3	070936	2	DAMPENER VIBRATION
4	070936C	2	DAMPENER VIBRATION
5	039253	8	SCREW HHC M8-1.25 X 20 G8.8
6	022145	12	WASHER FLAT 5/16 ZINC
7	022129	12	WASHER LOCK M8-5/16
8	045771	12	NUT HEX M8-1.25 G8 YEL CHR
9	071956	4	WASHER FLAT M8
10	051730	2	SCREW HHC M8-1.25 X 60 G8.8
12	057821	2	SCREW HHC M8-1.25 X 40 G8.8
13	021991	1	EARTH STRAP
14	027482	2	WASHER SHAKEPROOF EXT 5/16 STL
15	0A2308	1	PLUG BUTTON 2" DIA

Section 7 - Exploded Views and Parts
 Guardian Liquid-cooled 10 kW, 15 kW, 20 kW and 25 kW Generators
 Exploded View – Muffler – Drawing No. 0C1408B



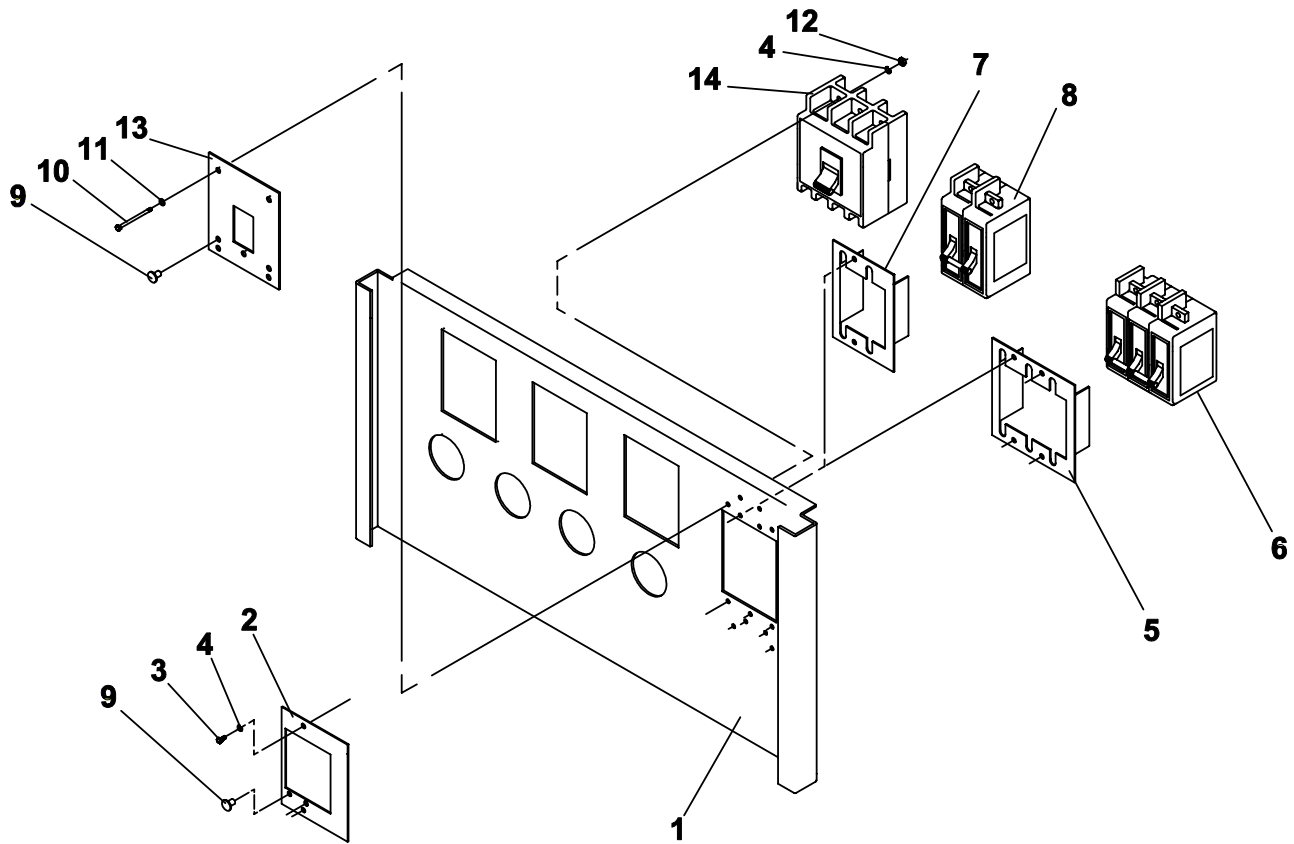
ITEM	PART NO.	QTY.	DESCRIPTION
1	0A4355	1	MANIFOLD EXHAUST 1.5L
2	0C1636	1	NIPPLE TOE 1.5 NPT X 6.5 BL IRON
3	036434	4	BOLT U 5/16-18 X 2.09
	036449	4	SADDLE 2 INCH
4	0C1330	1	PIPE EXHAUST
5	0C1318	1	FLEX PIPE EXHAUST
6	0C1068	1	SUPPORT MUFFLER 1.5L
7	0C1412	1	ELBOW EXHAUST 45 DEG
8	0A5728	1	MUFFLER 1.6/1.5L SAE
9	060366	2	STRAP MUFFLER 6" DIA
10	066889	4	SCREW HHC M8 X 1.25 X 20MM
11	022145	4	WASHER FLAT 5/16 ZINC
12	022129	4	WASHER LOCK M8-5/16
13	045771	4	NUT HEX M8-1.25 G8 YEL CHR
14	0A8974	1	CAP RAIN 2"



Section 7 - Exploded Views and Parts

Guardian Liquid-cooled 10 kW, 15 kW, 20 kW and 25 kW Generators

Exploded View – Circuit Breaker – Drawing No. 0A3371B

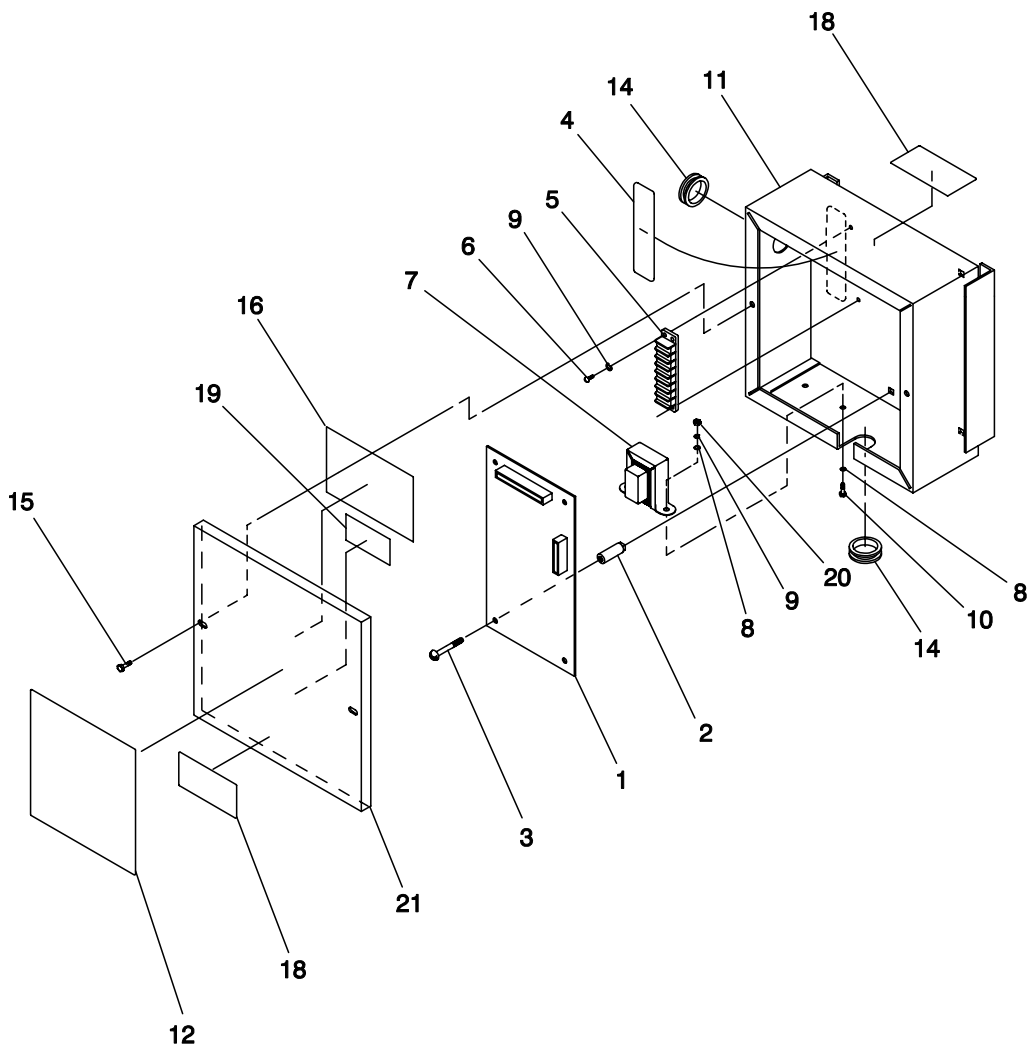
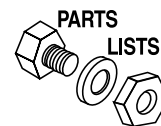


ITEM	PART NO.	QTY.	DESCRIPTION	ITEM	PART NO.	QTY.	DESCRIPTION
1	0A2103	1	SILKSCREEN "A" PANEL	57905	1	CIRCT BRK 45X2 240V	
	0A2104	1	SILKSCREEN "B" PANEL	039765	1	CIRCT BRK 50X2 240V 39782 BRKT	
	0A2105	1	SILKSCREEN "C" PANEL	048373	1	CIRCT BRK 70X2 240V	
	0A2106	1	SILKSCREEN "P" PANEL	063452	1	CIRCT BRK 80X2 240V	
2*	0A2052	1	COVER BQ CIRCUIT BREAKER	039766	1	CIRCT BRK 90X2 240V	
3	033130	-	SCREW HHM #8-32 X 1/4	048374	1	CIRCT BRK 100X2 240V	
4	022264	-	WASHER LOCK M4	0A2077	1	CIRCT BRK 125X2 120/240V	
5	039783	1	BRACKET MOUNTING CIRCT BRK	9	056967	3	PLUG PLASTIC .375
6	080522	1	CIRCT BRK 20 X 3 INACTIVE	10	053640	4	SCREW RHM #8-32 X 3-1/4
	047585	1	CIRCT BRK 30 X 3 240V MT PL	11	038150	4	WASHER FLAT #8 ZINC
	057906	1	CIRCT BRK 35 X 3 240V	12	022471	4	NUT HEX #8-32 STEEL
	056783	1	CIRCT BRK 40X3 240V	13**	0A2670	1	COVER,CIR.BRKR. 480V
	049942	1	CIRCT BRK 50X3 W/MOUNT PL ITE	14	0A2820	1	MCB 16A 3P 480V B-TR
	040533	1	CIRCT BRK 60X3 240V		0A2821	1	MCB 25A 3P 480V B-TR
	049135	1	CIRCT BRK 70 X 3 240V		0A2822	1	MCB 32A 3P 480V B-TR
	062812	1	CIR BKR 80-A 3P BQ3		0A2828	1	MCB 40A 3P 480V B-TR
	053691	1	CIRCT BRK 90 X 3 ITE BQ3-B090				
	040532	1	CIRCT BRK 100X3 240V 39783 BR				
7	039782	1	BRACKET MOUNTING CIRCT BRK				
8	076640	1	CIRCT BRK 20 X 2 ITE BQ2-B020				
	057903	1	CIRCT BRK 25 X 2 240V ITE				
	057472	1	CIRCT BRK 30 X 2 240V ITE				
	077906	1	CIRCT BRK 35X2 W/39782 BRACKET				
	043240	1	CIRCT BRK 40X2 240V				

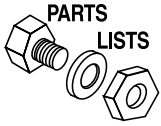
* USE WITH ITEM 14 ONLY

** USE WITH ITEM 8 ONLY

Section 7 - Exploded Views and Parts
Guardian Liquid-cooled 10 kW, 15 kW, 20 kW and 25 kW Generators
Exploded View – CMA Assembly – Drawing No. 081086D

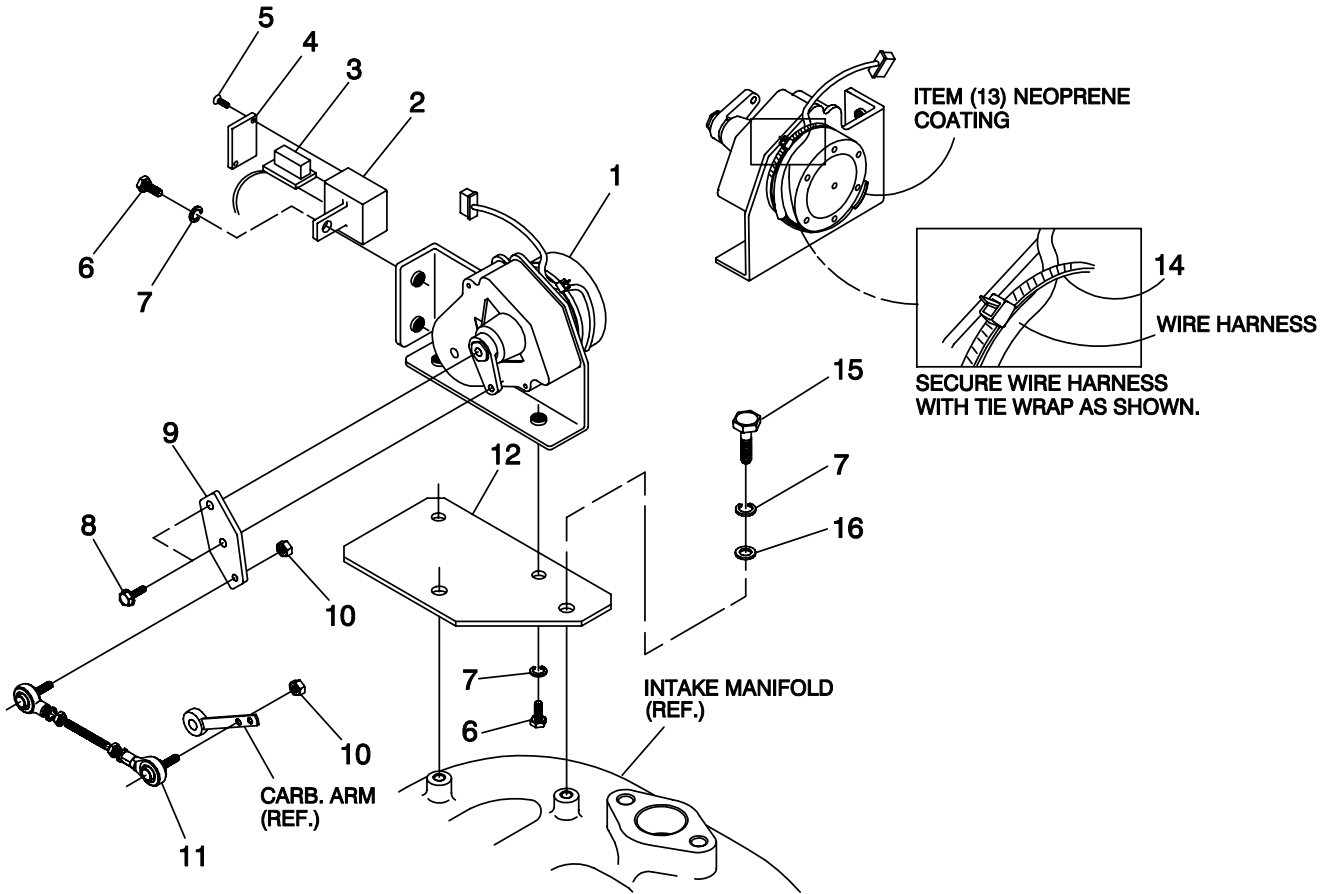


ITEM	PART NO.	QTY.	DESCRIPTION	ITEM	PART NO.	QTY.	DESCRIPTION
1	074100	1	ASSY HOME STDBY LOGIC (MODELS 921, 863, 865)	14	038057	2	GROMMET 7/8 X 1/16 X 3/4
	076009A	1	PP LOGIC ASM 50/60HZ (MODEL 9428)	15	058443	2	SCREW CRIMPTITE 1/4-20 X 5/8
2	072566	4	NUT SPACER .250 PCB	16	081224	1	DECAL MFG NAMEPLATE
3	080882	4	SCREW PPH TAPPING #6X5/8 SS	17*	079682	1	HARNESS CMA WIRE
4	074978	1	DECAL TERMINAL STRIP	18	086093	2	DECAL CMA WARNING
5	047822	1	BLOCK TERM 20A 7 X 6 X 1100V	19	083736	1	DECAL CSA GTS
6	075476	2	SCREW PPHM M4-0.7 X 16	20	051715	2	NUT HEX M4-0.7 G8 YEL CHR
7	083264	1	TRANSFORMER ASM CMA 240/12V	21	077401	1	COVER SILKSCREEN CMA
8	022985	4	WASHER FLAT #6 ZINC				* NOT SHOWN
9	022264	4	WASHER LOCK M4				
10	051787	2	SCREW HHC M4-0.7 X 16 G8.8				
11	079847	1	BOX CMA				
12	0A8504	1	DECAL, CMA LABEL				
	0A8504A	1	DECAL, CMA LABEL				
13*	022661V	.083'	TUBING SHRINK 19"ID RED				



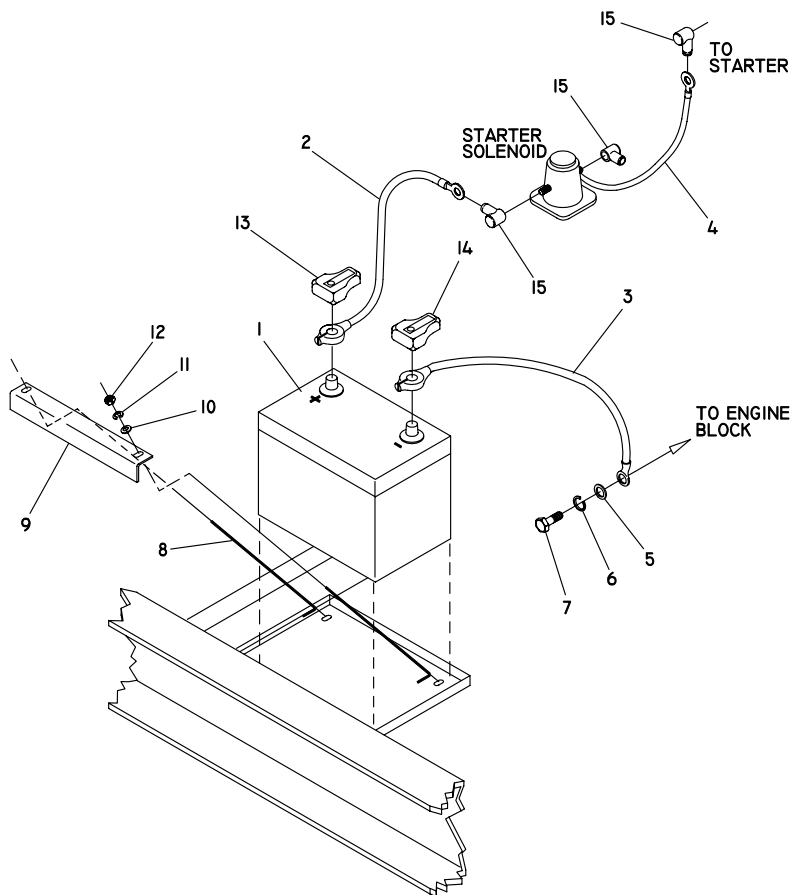
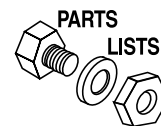
Section 7 - Exploded Views and Parts

Guardian Liquid-cooled 10 kW, 15 kW, 20 kW and 25 kW Generators
Exploded View – Governor Assembly – Drawing No. 0A7216A



ITEM	PART NO.	QTY.	DESCRIPTION
1	098290	1	ASM MOTOR STEPPER
2	098941A	1	HOUSING GOVERNOR CONNECTOR
3	098958A	1	CONNECTOR INTERFACE ASSEMBLY
4	098942A	1	COVER CONNECTOR HOUSING
5	098225	2	SCREW FHM #2 X 5/8 SELF TAP
6	043146	3	SCREW HHC M6-1.0 X 10 G8.8
7	022097	5	WASHER LOCK M6-1/4
8	064256	2	SCREW HHM #6-32 X 3/8 SELF TAP
9	098783	1	LEVER STEPPER MOTOR
10	037398	2	NUT LOCK HEX #10-32 NYL INS
11	0A7041	1	ASSEMBLY CARBURATOR LINKAGE
12	0A7106	1	BRACKET STEPPER MOTOR
13	074031	-	LIQUID NEOPRENE
14	029333A	1	TIE WRAP 7" BLACK
15	022507	2	SCREW HHC 1/4-20 X 1/2 G5
16	022473	2	WASHER FLAT 1/4 ZINC

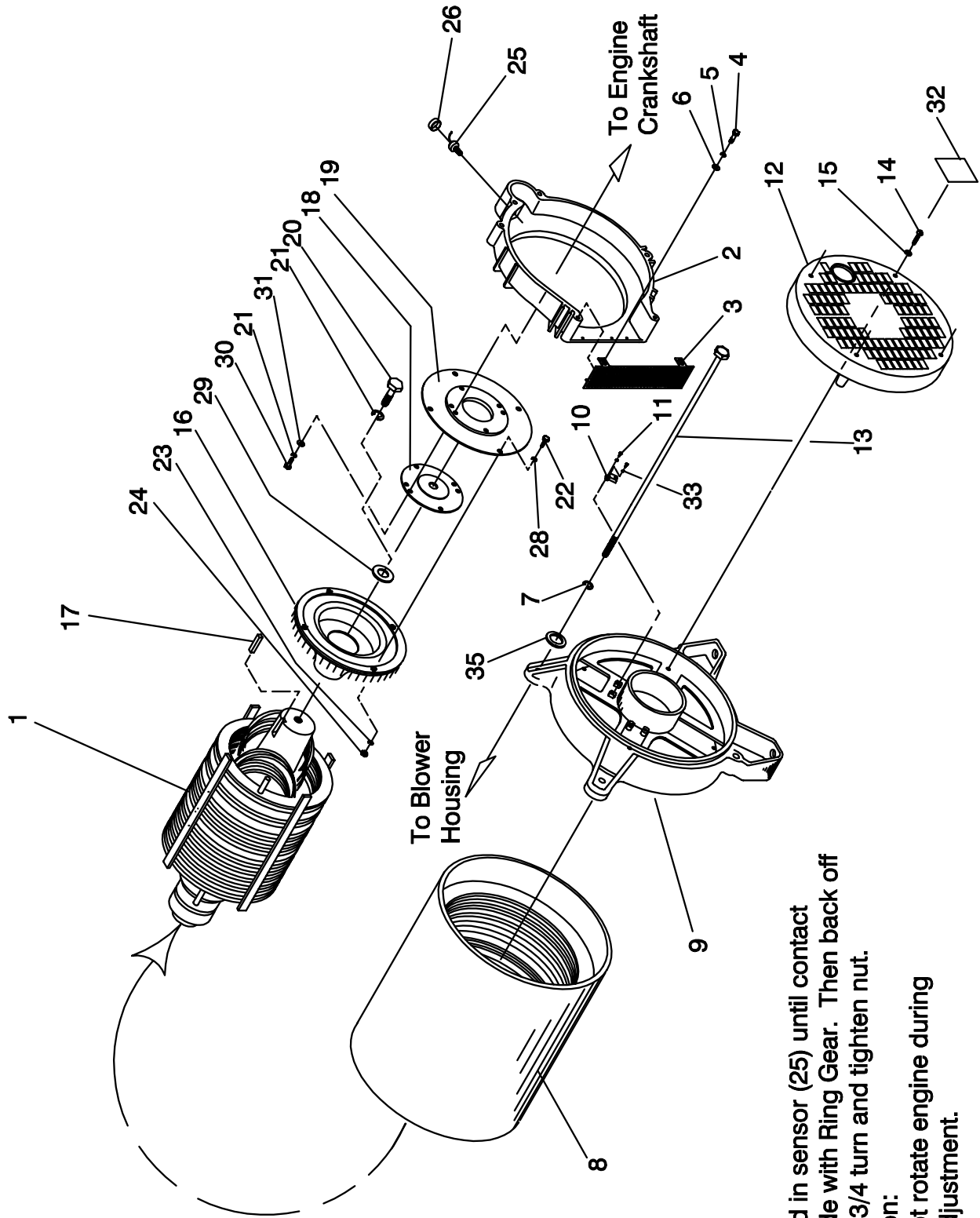
Section 7 - Exploded Views and Parts
Guardian Liquid-cooled 10 kW, 15 kW, 20 kW and 25 kW Generators
Exploded View – Battery – Drawing No. 098922E



ITEM	PART NO.	QTY.	DESCRIPTION
1	077483	1	BATT 12VDC 75-AH 26
2	038804D	1	CABLE BATT RED #4 X 20.00
3	038805B	1	CABLE BATT BLK #4 X 23.00
4	0742600131	1	ASSY,WIRE#16 RED 1.6
5	022131	1	WASHER FLAT 3/8 ZINC
6	046526	1	WASHER LOCK M10
7	052213	1	SCREW HHC M10-1.25 X 20 G8.8
8	059567	2	BOLT BATTERY HOLD DOWN
9	078121	1	BAR BATTERY HOLDDOWN
10	022145	2	WASHER FLAT M8-5/16 ZINC
11	022129	2	WASHER LOCK 5/16
12	022259	2	NUT HEX 5/16-18 STEEL
13	050331A	1	BATTERY POST COVER (RED+)
14	050331	1	BATTERY POSTCOVER (BLACK-)
15	075763	3	BOOT, BATTERY CABLE

Section 7 - Exploded Views and Parts

Guardian Liquid-cooled 10 kW, 15 kW, 20 kW and 25 kW Generators
Exploded View – Generator – Drawing No. 0A9348B

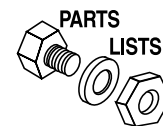


Note:
Thread in sensor (25) until contact is made with Ring Gear. Then back off 1/2 to 3/4 turn and tighten nut.

Caution:
Do Not rotate engine during this adjustment.

Section 7 - Exploded Views and Parts

Guardian Liquid-cooled 10 kW, 15 kW, 20 kW and 25 kW Generators
Exploded View – Generator – Drawing No. 0A9348B

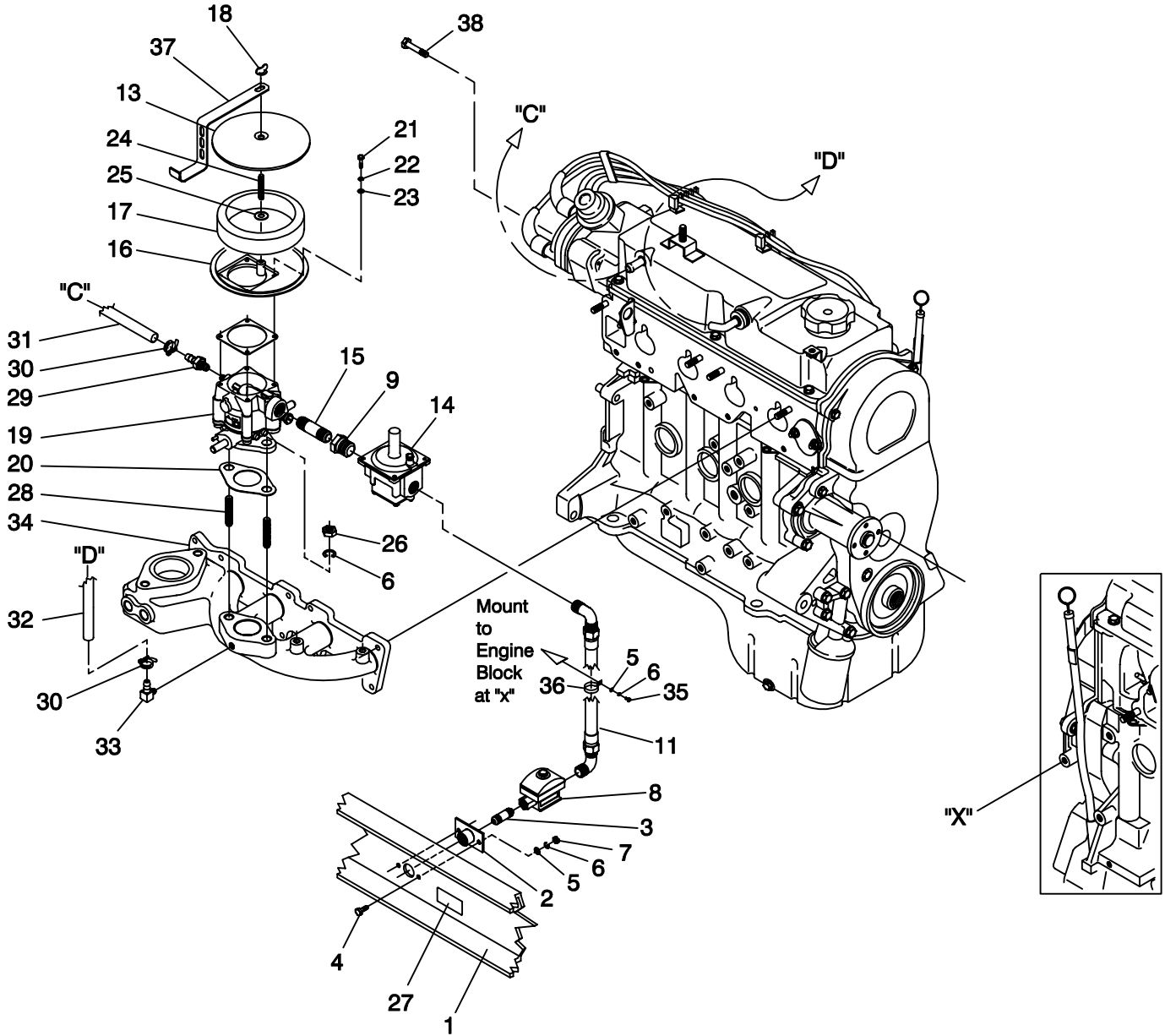


ITEM	PART NO.	QTY.	DESCRIPTION	ITEM	PART NO.	QTY.	DESCRIPTION
1	098671	1	ASSY ROTOR 10KW	13	075554B	4	BOLT,STATOR X 16"LG
	098681	1	ASSY ROTOR 15KW	14	0A9375	4	SCREW RHM #10-24 X 2
	098675	1	ASSY ROTOR 20KW	15	022152	4	WASHER LOCK #10
	098936	1	ASSY ROTOR 25KW	16	097146	1	FAN & RING GEAR ASSEM.
2	0A5336A	1	HOUSING BLOWER	17	042558	1	KEY SQ 3/8 X 1 STEEL
3	0A1659	1	SCREEN AIR OUTLET	18	0A5061	1	SPACER-FLEX PLATE
4	071912	4	SCREW PPHM M5-0.8 X 8	19	0A4989	1	PLATE, FLEX
5	022152	4	LOCK WASHER-#10	20	052213	1	SCREW HHC M10-1.25 X 20 G8.8
6	051713	4	WASHER FLAT M5	21	051769	6	WASHER LOCK M12
7	022129	4	WASHER LOCK M8-5/16	22	049541	4	SCREW HHC M10-1.5 X 35 G8.8
8	098672	1	ASSY STATOR 10KW A	23	046526	4	WASHER LOCK M10
	098673	1	ASSY STATOR 10KW D	24	045772	4	NUT HEX M10-1.5 G8 YEL CHR
	098674	1	ASSY STATOR 10KW GJK	25**	082130B	1	ASSY MPU SPEED SENSOR 48"
	098682	1	ASSY STATOR 15KW 1PH A	26*	087599	1	PLUG PLASTIC 3/8 CAPLUG #2
	098683	1	ASSY STATOR 15KW 3PH D	27	077043E	1	FLEX CONDUIT 1" BLCK (NOT SHOWN)
	098684	1	ASSY STATOR 15KW 1PH GJK	28	022131	4	WASHER FLAT 3/8 ZINC
	098676	1	ASSY STATOR 20KW 1PH A	29	072578	1	SPACER ROTOR SHAFT
	098677	1	ASSY STATOR 20KW 1PH A	30	0A7043	5	SCREW HHC M12-1.25 X 25 G8.8
	098678	1	ASSY STATOR 20KW 1PH GJK	31	049808	5	WASHER FLAT M12
	097620	1	ASSY STATOR 25KW 1PH A	32	058589	1	DECAL-WARNING
	098937	1	ASSY STATOR 25KW 1PH D	33	023365	4	WASHER SHAKEPROOF INT #8
	097621	1	ASSY STATOR 25KW 1PH D	35	0A8830	4	WASHER FLAT .34ID X .75OD
9	0A5382	1	BEARING CARRIER REAR				
10	075591	1	HOLDER, BRUSH ASSEM.				
11	052813	4	SCREW HHC M4-0.7 X 20 G8.8				* USED ON PRE-PACKAGED UNITS ONLY
12	0A5601	1	COVER, REAR BEARING CARRIER				** USED ON "C" OPTION PANEL UNITS ONLY

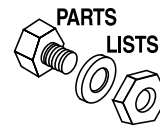


Section 7 - Exploded Views and Parts

Guardian Liquid-cooled 10 kW, 15 kW, 20 kW and 25 kW Generators
Exploded View – Natural Gas Fuel System – Drawing No. 0A9349E



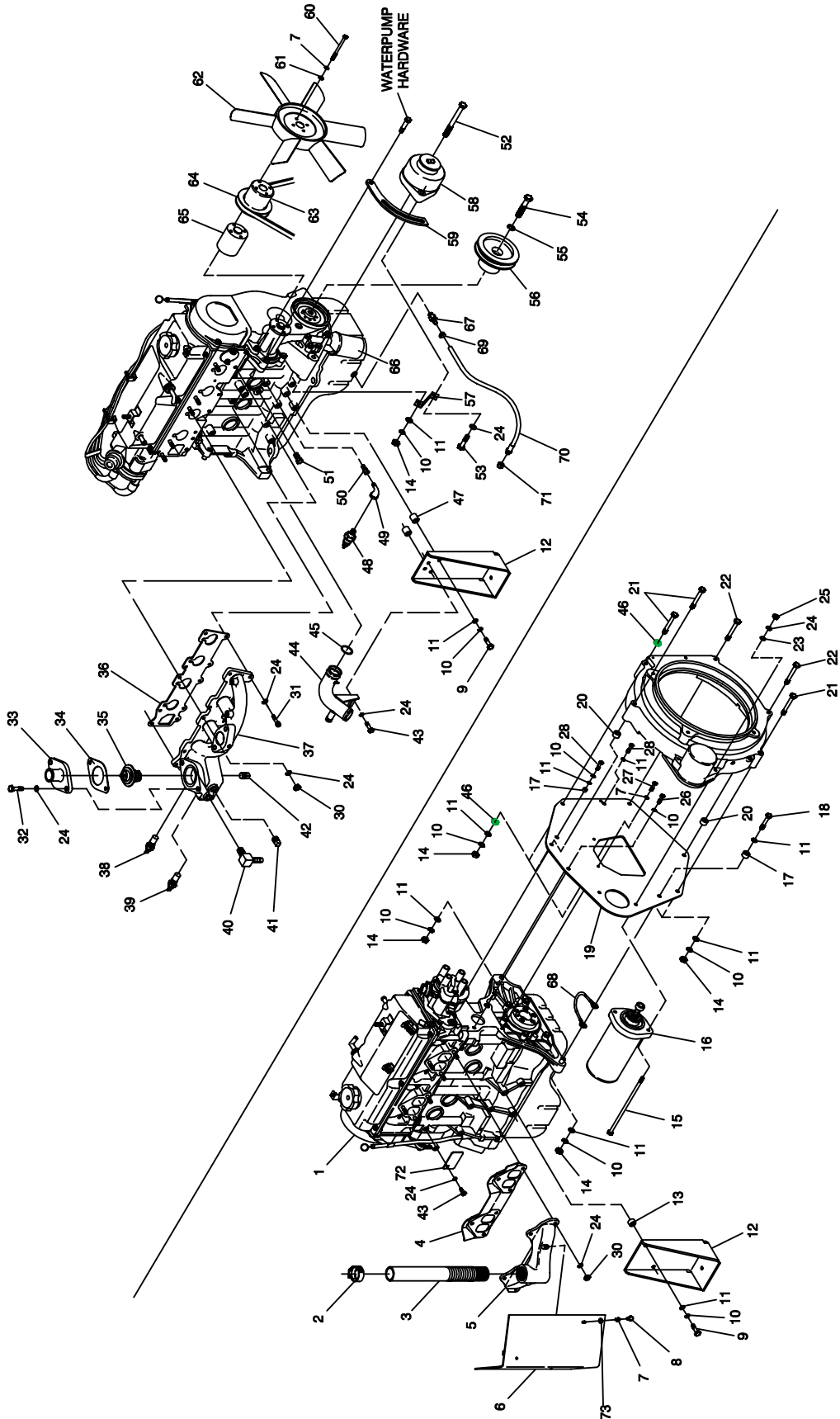
Section 7 - Exploded Views and Parts

Guardian Liquid-cooled 10 kW, 15 kW, 20 kW and 25 kW Generators
Exploded View – Natural Gas Fuel System – Drawing No. 0A9349E

ITEM	PART NO.	QTY.	DESCRIPTION
1	0C2632	1	WELDMENT MOUNTING BASE
2	075580	2	FLANGE FUEL INLET
3	026915	3	NIPPLE CLOSE 3/4 X 1.375
4	039253	4	SCREW HHC-M8-1.25 X 20
5	022145	5	WASHER FLAT 5/16 ZINC
6	022129	7	WASHER LOCK M8-5/16
7	045771	4	NUT HEX M8-1.25 G8 YEL CHR
8	0A2666	2	SOLENOID GAS FUEL
9	046747	1	BUSHING REDUCER 3/4 TO 3/8
11	0C3714	1	ASSY HOSE NG/LPV.31"
13	0A5547	1	COVER AIR CLEANER
14	0C1475	1	REGULATOR NATURAL GAS EM
	0A9911	1	REGULATOR L.P. GAS EM
15	0A7989	1	NIPPLE PIPE 3/8 NPT X 4 BLK IRON
16	0A6593	1	ADAPTOR CARBURETOR
17	059402	1	FILTER ELEMENT
18	037561	1	NUT WING 1/4-20 NYLK
19	059403	1	CARBURETOR, CA55 EM
20	059401	1	GASKET CARBURETOR
21	034154	4	SCREW PHM 10-24 X 1/2 CAD
22	022152	4	WASHER LOCK #10
23	023897	4	WASHER FLAT #10 ZINC
24	062522	1	STUD THR 1/4-20X3 F THR G2 ZNC
25	022127	1	NUT HEX 1/4-20 STEEL
26	022259	2	NUT HEX 5/16-18 STEEL
27	050280	1	DECAL FUEL INLET LPG
28	0A6125	2	STUD 5/16-18 X 1.25 F THR
29	052219	1	BARBED STR 1/8NPT X 5/16
30	048031C	3	CLAMP HOSE BAND 1/4
31	029032	6-1/2"	HOSE 9/32 ID
32	029032	11"	HOSE 9/32 ID
33	032552	1	BARBED EL 90 5/16 X 1/8NPT
34	0A4682	1	MANIFOLD INTAKE 1.5
35	042907	1	SCREW HHC M8-1.25 X 16 G8.8
36	055934D	1	CLAMP VINYL 1.06 X .406 Z
37	0A7040	1	BRACKET-RADIATOR HOSE
38	0C3153	1	TORX PLUS BHS M8 X 30

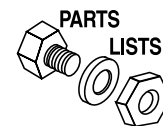
Section 7 - Exploded Views and Parts

**Guardian Liquid-cooled 10 kW, 15 kW, 20 kW and 25 kW Generators
Exploded View – Engine Compartment – Drawing No. 0A7642J**



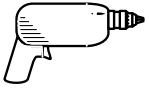
Section 7 - Exploded Views and Parts

Guardian Liquid-cooled 10 kW, 15 kW, 20 kW and 25 kW Generators
Exploded View – Engine Compartment – Drawing No. 0A7642J



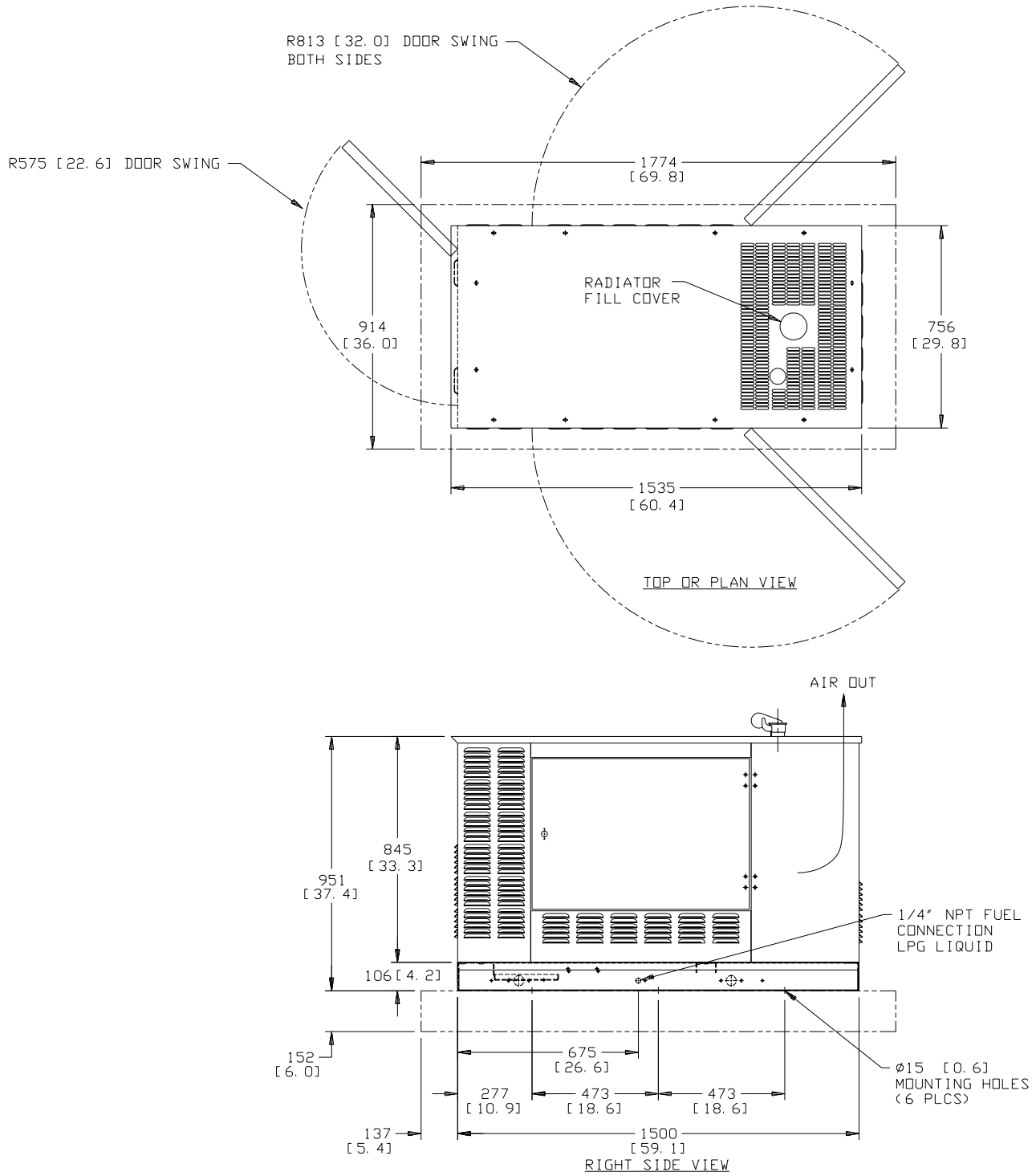
ITEM	PART NO.	QTY.	DESCRIPTION	ITEM	PART NO.	QTY.	DESCRIPTION
1	0A4531	1	ENGINE-1.5L	40	034339	1	BARBED EL 90 3/8NPT X 5/8
2	035685	1	CLAMP HOSE #28 1.32 - 2.25	41	026925	1	PLUG STD PIPE 3/8 STEEL SQ HD
3	075546A	1	PIPE-FLEX EXHAUST	42	061012	1	PLUG STD PIPE 1/8 SCKT HD
4	0A45310258	1	GASKET-EXHAUST MANIFOLD	43	039253	6	SCREW HHC M8-1.25 X 20 G8.8
5	0A4355	1	MANIFOLD-EXHAUST	44	0A5110	1	PIPE WATER-INLET
6	0A6699	1	SHIELD HEAT EXHAUST	45	0A7006	1	O-RING 1-1/16X1-5/16X1/8
7	022097	8	WASHER LOCK M6-1/4	46	025507	2	WASHER SHAKEPROOF EXT 7/16 STL
8	022507	2	SCREW HHC 1/4-20 X 1/2 G5	47	022500B	2	SPACER .41X.75X.25 ST/ZNC
9	052212	4	SCREW HHC M10-1.25 X 25 G8.8	48	0A8584	1	SWITCH OIL PRESSURE
10	046526	14	WASHER-LOCK-M10	49	036277	1	ELBOW 90D STREET 1/8
11	022131	16	WASHER FLAT 3/8 ZINC	50	042574	1	ADAPTOR 1/8NPTF TO 1/8-28
12	0C2499	2	STAMPING ENG FOOT	51	026073A	1	PLUG STD PIPE 1/4 STEEL SQ HD
13	055993	1	SPACER .41 X .75 X .12 STL/ZNC	52	0A6701	1	SCREW HHC M10-1.5 X 110 G8.8
14	045772	4	NUT HEX M10-1.5 G8 YEL CHR	53	039414	1	SCREW HHC M8-1.25 X 35 G8.8
15	023586	2	SCREW SHC 5/16-18 X 2 G8.8 NZ	54	0A5568	1	SCREW HHC M12-1.25 X 55 G8.8
16	020692	1	STARTER-12V	55	051769	1	WASHER LOCK M12
17	0A7005	2	SPACER .56 X 1 X .37 ST/ZNC	56	0A4804	1	PULLEY-CRANKSHAFT (1800 RPM)
18	052243	1	SCREW HHC M10-1.5 X 60 G8.8		0A4800	1	PULLEY-CRANKSHAFT (3600 RPM)
19	0A4772	1	ENGINE PLATE	57	0A5839	1	BRACKET - ALT SUPPRT
20	070901	2	SLEEVE DOWEL BLHSG	58	0A1354B	1	DC ALTERNATOR-12V
21	051735	3	SCREW HHC M10-1.5 X 70 G8.8	59	0A4839	1	ARM ADJUST ALTERNATOR
22	056768	2	SCREW HHC M10-1.5 X 90 G8.8	60	055816	4	SCREW HHC M6-1.0 X 70 G8.8
23	022145	2	WASHER FLAT 5/16 ZINC	61	049811	4	WASHER FLAT M6
24	022129	23	WASHER LOCK M8-5/16	62	075614	1	FAN ENG PUSHER 6/380
25	022259	2	NUT HEX 5/16-18 STEEL	63	0A2628	1	PULLEY - FAN 95 DIA
26	052213	1	SCREW HHC M10-1.25 X 20 G8.8	64	0A5275	1	V-BELT 3/8 X 32-1/8 1.5L
27	047411	2	SCREW HHC M6-1.0 X 16 G8.8		0A5586	1	V-BELT 3/8 X 28.9 1.5L
28	052830	2	SCREW HHC M10-1.25 X 45 G8.8	65	0A4814	1	SPACER PULLEY
30	045771	10	NUT HEX M8-1.25 G8 YEL CHR	66	0A45310244	1	FILTER OIL
31	058306	5	SCREW SHC M8-1.25 X 25 G12.9	67	0C1852	1	ADAPTER DRAIN OIL
32	030795	2	SCREW HHC 5/16-18 X 1 G5	68	0912970066	1	GROUND WIRE (STARTER)
33	0A2711A	1	ADAPTER-THERMOSTAT	69	070928	1	CLAMP HOSE - OIL DRAIN
34	048665	1	GASKET THERMOSTAT	70	069860C	1	HOSE ASM.-OIL DRAIN
35	075885	1	THERMOSTAT 195 DEG	71	069811	1	CAP HEX 1/4NPT BRASS
36	0A45310257	1	GASKET INLET MANIFOLD	72	0A5317	1	NAMEPLATE ENGINE
37	0A4682	1	MANIFOLD-INTAKE	73	022473	2	WASHER FLAT 1/4 ZINC
38	057522	1	SENSOR COOLANT LEVEL				
39	0A6751	1	SW-TMP 245DEG 3/8NPT				

INSTALLATION



Section 8 – Installation

**Guardian Liquid-cooled 10 kW, 15 kW, 20 kW and 25 kW Generators
Installation Drawing – Drawing No. 0C1450**



Section 8 – Installation

Guardian Liquid-cooled 10 kW, 15 kW, 20 kW and 25 kW Generators
Installation Drawing – Drawing No. 0C1450

INSTALLATION

