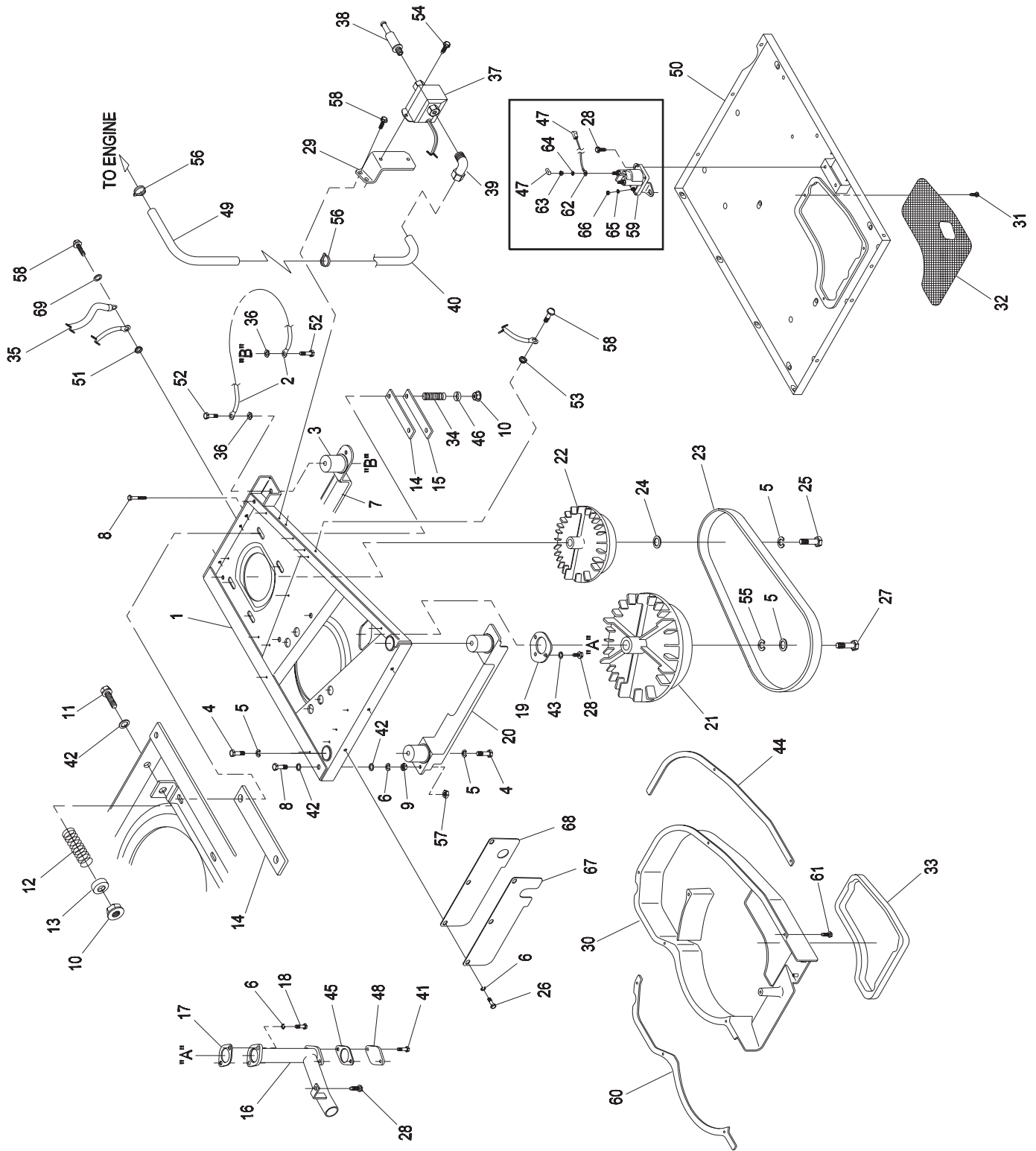




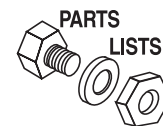
Appendix 4 – Exploded Views and Parts Lists

PRIMEPACT 50 Recreational Vehicle Generator
Base and Pulleys (Model 02010-0) – Drawing No. A8924-B



Appendix 4 – Exploded Views and Parts Lists

PRIMEPACT 50 Recreational Vehicle Generator Base and Pulleys (Model 02010-0) – Drawing No. A8924-B

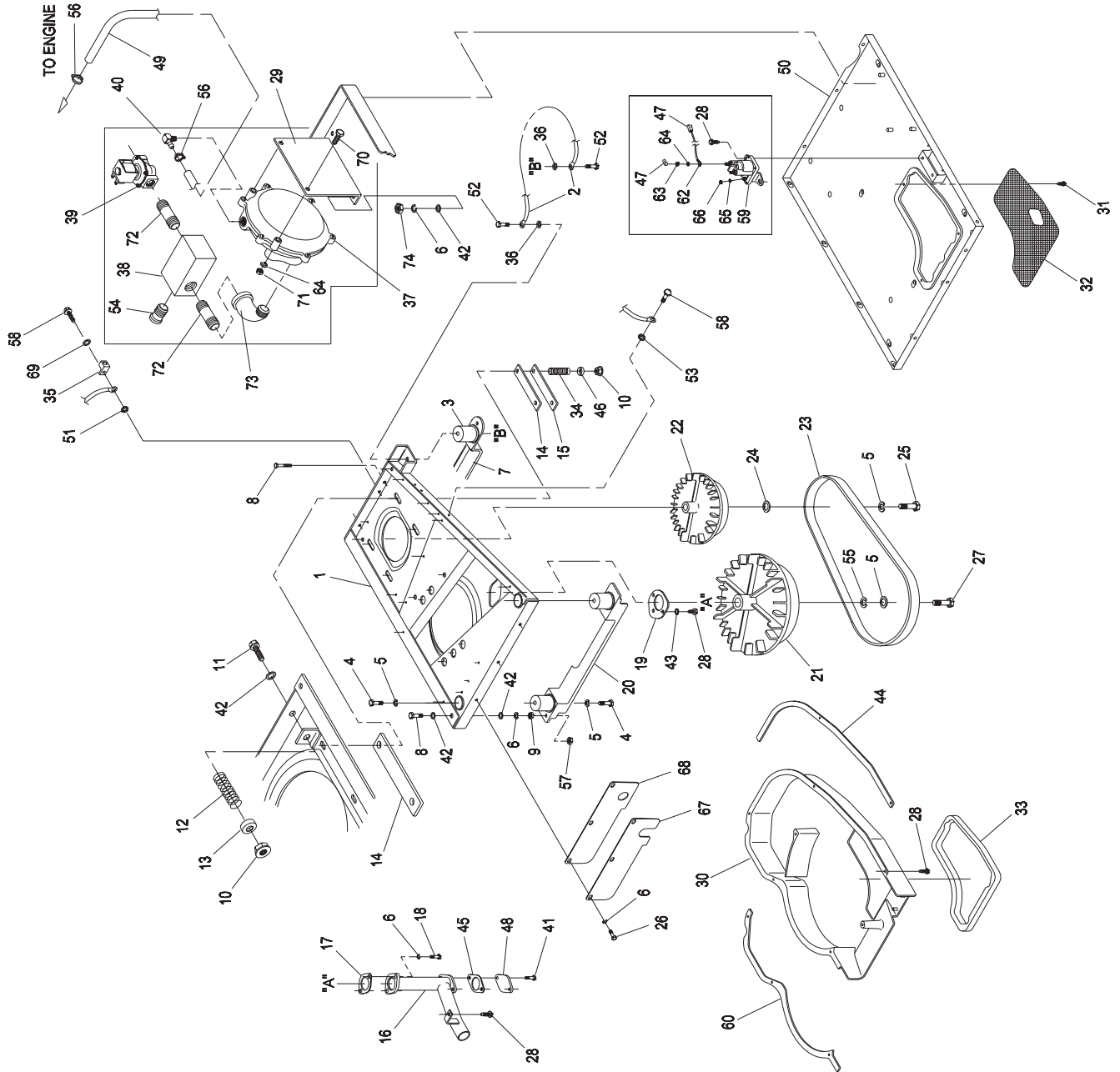


ITEM	PART NO.	QTY.	DESCRIPTION	ITEM	PART NO.	QTY.	DESCRIPTION
1	C2368	1	BASE, MOUNTING	36	A4456	2	3/8" SPECIAL LOCK WASHER
2	53407	1	GROUND CABLE	37	90475	1	FUEL PUMP
3	46911	4	MOUNT, (RUBBER)	38	87769	1	FUEL FILTER
4	25017	6	CAPSCREW, HEX HD.-3/8"-16 X 1/2"	39	A7695	1	FITTING-1/8" PIPE TO 1/4" TUBE
5	22237	6	LOCK WASHER-3/8"	40	A6922	1	FUEL TUBE, METAL
6	22129	7	LOCK WASHER-M8	41	79246	2	CAPSCR., HEX HD.-M6-1.0 X 16
7	A6479	1	SKID, RUBBER MOUNT	42	22145	5	FLAT WASHER-M8-5/16"
8	77603	2	SAFETY BOLT 5/16"-18 X 3 1/2"	43	38150	3	FLAT WASHER-#8
9	22259	2	NUT, HEX-5/16"-18	44	A8010A	1	GASKET, BLOWER HSNG
10	52858	6	NUT, FLANGED LOCK-M8-1.25	45	77643	1	EXHAUST PIPE GASKET
11	51730	2	CAPSCR. HEX HD.-M8-1.25 X 60MM	46	75237	4	WASHER, SPRING RETAINER
12	29459	2	SPRING, BELT TENSION	47	75763-A	1	BOOT, BATTERY CABLE
13	75215	2	WASHER, SPRING CNTR.	48	90859	1	EXHAUST COVER PLATE
14	73146	4	SLIDE (NYLON)	49	30340	6 IN.	HOSE, FUEL
15	75209	2	SUPPORT, NYLON SLIDE	50	A8594	1	PAN, SLIDE
16	A8341	1	MANIFOLD, EXHAUST	51	23762	2	SHAKEPROOF WASHER
17	90239	1	GASKET, EXHAUST MANIFOLD	52	23152	2	CAPSCR., HEX HD.-3/8"-16 X 3/4"
18	40976	2	SOCKET HD. CAPSCR.,-M8-1.25 X 20 LG.	53	23762	1	SHAKEPROOF-M5
19	A6858	1	GASKET, COLLECTOR PAN	54	45756	2	SCREW, TAPTITE-M6-1.0 X 10 LG.
20	A8614	1	SKID, RUBBER MOUNT	55	22131	1	FLAT WASHER-M10
21	75224-B	1	PULLEY, ENGINE	56	48031-C	2	CLAMP, HOSE
22	73106-B	1	PULLEY, ALT.	57	81105	2	NUT, FLANGE-5/16"-18 (SPECIAL)
23	75216	1	BELT (POLY V 4L)-40"	58	66849	4	SCREW, TAPTITE M5-0.8 X 16 LG.
24	49451	1	WASHER, PULLEY RETAINER	59	86729	1	STARTER CONTACTOR
25	42633	1	CAPSCR., SOCKET HD. 3/8"-24 X 1" (GRADE 5)	60	A8010	1	GASKET, BLOWER HSNG
26	39253	3	CAPSCR., HEX HD.-M8-1.25 X 20	61	C2824	7	HHS #10-32 X 9/16" LG, TAP-R
27	A8250	1	CAPSCR., HEX HD.-3/8"-24 X 2"	62	10-74260	1	STARTER CABLE
28	56893	7	CRIMPTITE-#10-24 X 1/2"	63	22127	2	HEX NUT-1/4"-20
29	A8615	1	BRACKET-FUEL PUMP	64	22097	2	LOCK WASHER-1/4"
30	C1320	1	HOUSING, BLOWER	65	22264	2	LOCK WASHER-M4
31	63036	3	CRIMPTITE-#8-18 X 1/4"	66	22471	2	HEX NUT-#8-32
32	A8694	1	SCREEN, SLIDE PAN	67	A8531	1	PLATE, BLOWER SIDE
33	A8726	1	GASKET, BLOWER / PAN	68	A8407	1	GASKET, BLOWER SIDE
34	75242	4	SPRING, GENERATOR SET MT	69	22473	1	FLAT WASHER 1/4"
35	C4006	1	CABLE, BATTERY				



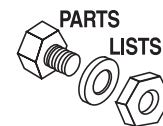
Appendix 4 – Exploded Views and Parts Lists

**PRIMEPACT 50 Recreational Vehicle Generator
Base and Pulleys (Model 04164-0) – Drawing No. C3878-A**

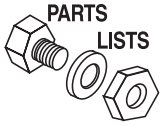


Appendix 4 – Exploded Views and Parts Lists

PRIMEPACT 50 Recreational Vehicle Generator Base and Pulleys (Model 04164-0) – Drawing No. C3878-A



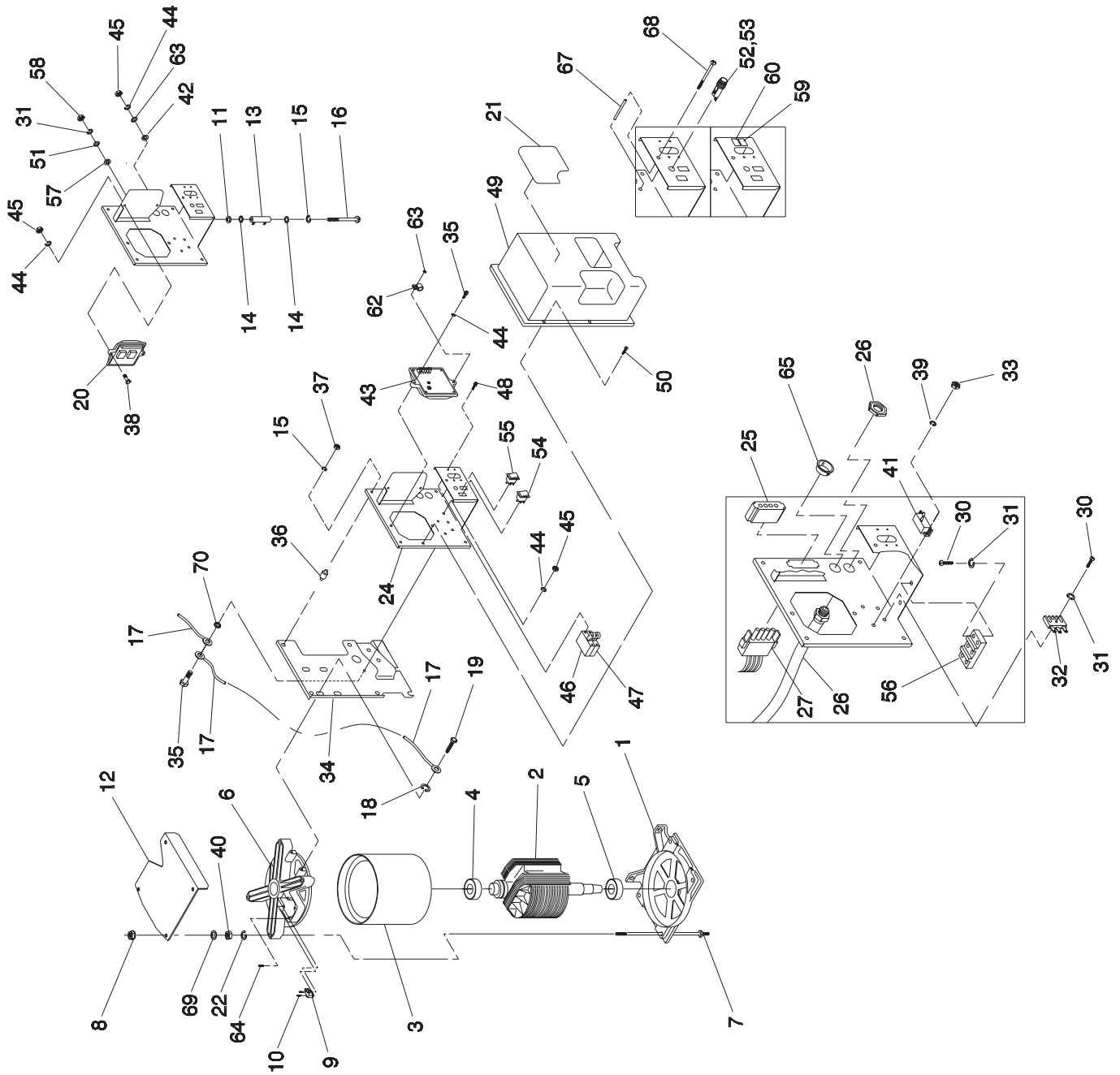
ITEM	PART NO.	QTY.	DESCRIPTION	ITEM	PART NO.	QTY.	DESCRIPTION
1	C2368	1	BASE, MOUNTING	36	A4456	2	3/8" SPECIAL LOCK WASHER
2	53407	1	GROUND CABLE	37	75211	1	REGULATOR, GAS FUEL
3	46911	4	MOUNT, (RUBBER)	38	A6894	1	MANIFOLD, LP
4	25017	6	CAPSCREW, HEX HD.-3/8"-16 X 1/2"	39	A2666	1	SOLENOID, GAS FUEL
5	22237	6	LOCK WASHER-3/8"	40	61696	1	BARB, 90 DEG. 1/2" X 3/8" NPT
6	22129	10	LOCK WASHER-M8	41	79246	2	CAPSCR., HEX HD.-M6-1.0 X 16
7	A6479	1	SKID, RUBBER MOUNT	42	22145	8	FLAT WASHER-M8-5/16"
8	77603	2	SAFETY BOLT 5/16"-18 X 3 1/2"	43	38150	3	FLAT WASHER-#8
9	22259	2	NUT, HEX-5/16"-18	44	A8010A	1	GASKET, BLOWER HSNG
10	52858	6	NUT, FLANGED LOCK-M8-1.25	45	77643	1	EXHAUST PIPE GASKET
11	51730	2	CAPSCR. HEX HD.-M8-1.25 X 60MM	46	75237	4	WASHER, SPRING RETAINER
12	29459	2	SPRING, BELT TENSION	47	75763-A	1	BOOT, BATTERY CABLE
13	75215	2	WASHER, SPRING CNTR.	48	90859	1	EXHAUST COVER PLATE
14	73146	4	SLIDE (NYLON)	49	74994	10.5"	HOSE, 1/2 ID PETROLEUM
15	75209	2	SUPPORT, NYLON SLIDE	50	A8594	1	PAN, SLIDE
16	A8341	1	MANIFOLD, EXHAUST	51	23762	2	SHAKEPROOF WASHER
17	90239	1	GASKET, EXHAUST	52	23152	2	CAPSCR., HEX HD.-3/8"-16 X 3/4"
18	40976	2	SOCKET HD. CAPSCR.,-M8-1.25 X 20 LG.	53	23762	1	SHAKEPROOF-#10
19	A6858	1	GASKET, COLLECTOR PAN	54	C3766	1	3/4" NPT PLUG
20	A8614	1	SKID, RUBBER MOUNT	55	22131	1	FLAT WASHER-M10
21	75224-B	1	PULLEY, ENGINE	56	57822	2	#8 HOSE CLAMP
22	73106-B	1	PULLEY, ALT.	57	81105	2	NUT, FLANGE-5/16"-18 (SPECIAL)
23	75216	1	BELT (POLY V 4L)-40"	58	66849	2	SCREW, TAPTITE M5-0.8 X 16 LG.
24	49451	1	WASHER, PULLEY RETAINER	59	86729	1	STARTER CONTACTOR
25	42633	1	CAPSCR., SOCKET HD. 3/8"-24 X 1" (GRADE 5)	60	A8010	1	GASKET, BLOWER HSNG
26	39253	3	CAPSCR., HEX HD.-M8-1.25 X 20	62	10-74260	1	STARTER CABLE
27	A8250	1	CAPSCR., HEX HD.-3/8"-24 X 2"	63	22127	2	HEX NUT-1/4"-20
28	56893	14	CRIMPTITE-#10-24 X 1/2"	64	22097	4	LOCK WASHER-1/4"
29	A7837	1	BRACKET, LP REGULATOR	65	22264	2	LOCK WASHER-M4
30	C1320	1	HOUSING, BLOWER	66	22471	2	HEX NUT-#8-32
31	63036	3	CRIMPTITE-#8-18 X 1/4"	67	A8531	1	PLATE, BLOWER SIDE
32	A8694	1	SCREEN, SLIDE PAN	68	A8407	1	GASKET, BLOWER SIDE
33	A8726	1	GASKET, BLOWER / PAN	69	22473	1	FLAT WASHER 1/4"
34	75242	4	SPRING, GENERATOR SET MT	70	38750	2	M6-1.0 X 30 HHCS
35	62684	1	GROUNDING LUG	71	49813	2	M6-1.0 HEX NUT
				72	26915	2	CLOSE NIPPLE 3/4" NPT
				73	26307	1	90 DEG. 3/4" STREET ELBOW
				74	45771	3	M8-1.25 HEX NUT



Appendix 4 – Exploded Views and Parts Lists

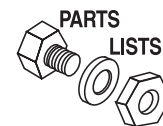
PRIMEPACT 50 Recreational Vehicle Generator

Alternator and Panel (Model 02010-0 and 04164-0) – Drawing No. A8922-B



Appendix 4 – Exploded Views and Parts Lists

PRIMEPACT 50 Recreational Vehicle Generator Alternator and Panel (Model 02010-0 and 04164-0) – Drawing No. A8922-B

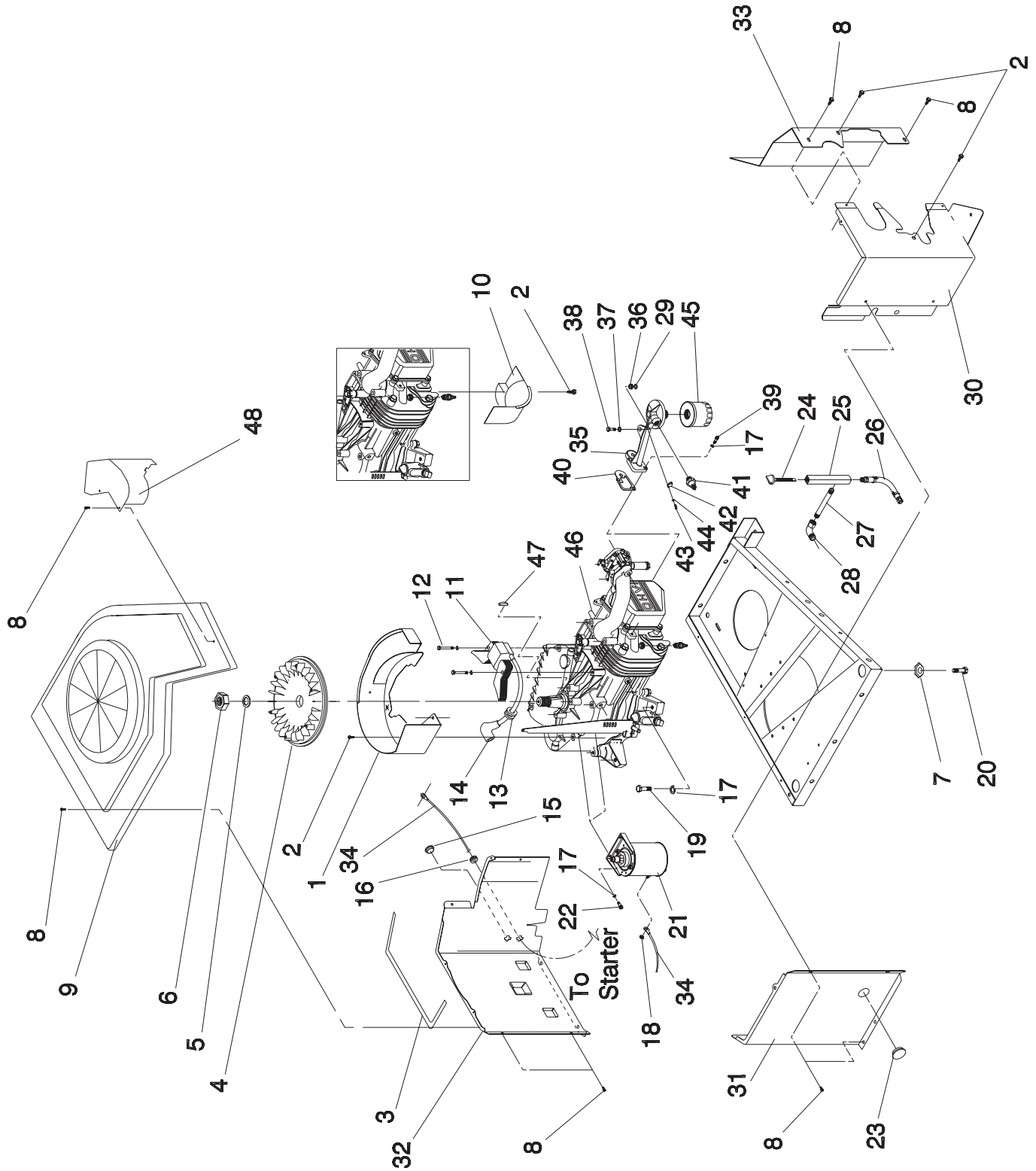


ITEM	PART NO.	QTY.	DESCRIPTION	ITEM	PART NO.	QTY.	DESCRIPTION
1	75995	1	LOWER BEARING CARRIER	39	43182	2	M3-LOCK WASHER
2	A5649H	1	ROTOR ASSEM.	40	45771	4	HEX NUT, M8
3	A5646H	1	STATOR ASSEM.	41	53623	1	C/BREAKER 2.5A.-ON
4	73159	1	BALL BEARING	42	22769	1	#10-SHAKEPROOF WASHER
5	31971	1	BALL BEARING	43	83049	1	REGULATOR VOLTAGE
6	72379-B	1	UPPER BEARING CARRIER	44	22152	5	#10-LOCK WASHER
7	A6529	4	STUD-STATOR	45	51716	3	M5-0.8 HEX NUT
8	52858	4	M8-1.25 FLANGE LOCK NUT	46	90144	1	C/BREAKER 20A.
9	66386	1	BRUSH HOLDER	47	90145	1	C/BREAKER 30A. ALL UNITS
10	66849	3	M5-0.8 X 16 LG. TAPTITE	48	25105	4	#6-32 SCREW W/LOCK WASHER
11	26850	1	SHAKEPROOF EXTERNAL-M6				
12	C3818	1	GENERATOR TOP HOUSING	49	86315	1	PANEL COVER
13	75234	1	RESISTOR1R 5% 25 WLVG	50	90734	4	M4-0.7 X 12 LG. CAPSCR.W/LOCK-WASHER & FLAT WASHER
14	22473	2	¼"/ M6-FLAT WASHER				
15	22097	5	¼"/ M6-LOCK WASHER				
16	A2053	1	M6-1.0 X 65 LG. CAPSCREW	51	22985	1	#6-FLAT WASHER
17	90141	2	GROUND CABLE	52	32300	1	FUSE HOLDER
18	22447	1	SHAKEPROOF	53	22676	1	FUSE AGC-15A.
19	74906	4	M6-1.0 X 20 LG. TAPTITE	54	87798	1	SWITCH S.P.D.T. 6A.-(START-STOP)
20	94039	1	CONTROLLER P.C.B.				
21	22129	4	5/16" -M8 LOCK WASHER	55	92113	1	SWITCH S.P.D.T.-(FUEL PUMP)
	C2337A	1	DECAL, UNIT (LP MODEL)	56	75210-A	1	TERMINAL BLOCK
22	22129	4	5/16" -M8 LOCK WASHER	57	23365	1	M4-SHAKEPROOF WASHER
24	86316	1	PANEL SHEET METAL	58	51715	1	M4-0.7 HEX NUT
25	53650	1	4-PIN CONNECTOR	59	90157	1	DECAL, CB RATING 30A.
26	C4258	1	CONDUIT ASSEMBLY	60	90156	1	DECAL, CB RATING 20A.
27	75244	1	ASSEMBLY, REMOTE CABLE	62	31791	1	CLAMP, HOSE
30	75476	3	M4-0.7 X 16 LG. CAPSCREW	63	23897	2	#10/ M5-FLAT WASHER
31	22264	4	#8/ M4-LOCK WASHER	64	74908	2	M5-0.8 X 10 LONG TAPTITE
32	65795	1	BATTERY CHARGE RECTIFIER	65	23484-S	1	BUSHING
33	90987	2	M3-0.5 X 15 LG. PPHMS	67	94070	1	SPACER-PLASTIC
34	86317A	1	PANEL SUPPORT BRACKET	68	94071	1	M5-.08 X 110 LG. PPHMS
35	75235	3	M5-0.8 X 30 LG. CAPSCREW	69	27756	4	NYLON WASHER
36	82737	4	VIBRATION MOUNT	70	A8475	1	#10-SPECIAL LOCK WASHER
37	49813	4	M6-1.0 HEX NUT				
38	55440	2	M5-08 X 25 LG. HEX HD. CAPSCR.				

Appendix 4 – Exploded Views and Parts Lists

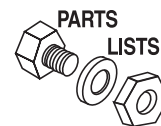
PRIMEPACT 50 Recreational Vehicle Generator

Engine Sheet Metal (Model 02010-0 and 04164-0) – Drawing No. A8921-A



Appendix 4 – Exploded Views and Parts Lists

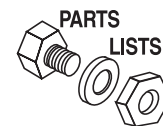
PRIMEPACT 50 Recreational Vehicle Generator Engine Sheet Metal (Model 02010-0 and 04164-0) – Drawing No. A8921-A



ITEM	PART NO.	QTY.	DESCRIPTION	ITEM	PART NO.	QTY.	DESCRIPTION
1	A4323	1	SCROLL, FLYWHEEL	26	A9539	1	OIL DRAIN HOSE ASSEMBLY
2	45756	9	SCREW, TAPTITE M6-1.0 X 10 LG	27	A7838	1	PIPE NIPPLE, 3/8" X 8" LG.
3	29289	2.5 FT.	FOAM TAPE	28	38593	1	BRASS STREET ELBOW, 3/8"
4	SRV 91222-D	1	FLYWHEEL	29	22473	1	FLAT WASHER, 1/4"-M6
5	67198-N	1	WASHER, BELLVILLE M20 X 2.2	30	A6357	1	WRAPPER, ENGINE SPARK PLUG
6	67890	1	NUT, M20 X 1.5, FLYWHEEL	31	90954	1	WRAPPER, STARTER SIDE
7	A4456	1	3/8" SPECIAL LOCK WASHER	32	A6489	1	WRAPPER, REAR GEAR CASE
8	56893	21	SCREW, CRIMPTITE #10-24 X .5 LG	33	A6359	1	WRAPPER, CARB. SIDE
9	A6358	1	COVER, TOP FLYWHEEL	34	10-74260	1	ASSEMBLY, WIRE-STARTER (#16)
10	91646	1	DEFLECTOR, EXHAUST PORT	35	90892	1	SUPPORT, OIL FILTER
11	92572	1	ASSEMBLY, IGNITION COIL	36	91159	1	BUSHING, RUBBER
12	92079	2	SCREW, TAPTITE M6-1.0 X 25MM	37	91160	1	WASHER, RUBBER
13	22717A	1	GROMMET, RUBBER	38	91161	1	BOLT, SHOULDER-M6 X 15 LG.
14	73132	1	BOOT, SPARK PLUG	39	49821	2	BOLT, SOCKET HD. CAPSCR.-M8-1.25 X 30 LG
15	61669	1	PLUG, BUTTON 3/4"	40	86999	1	GASKET, OIL FILTER SUPPORT
16	89685	2	GROMMET, RUBBER	41	60108	1	SWITCH, OIL PRESSURE-10 PSI
17	22129	6	LOCK WASHER-M8	42	75281	1	SWITCH, OIL TEMPERATURE
18	22127	1	HEX NUT-1/4"-20	43	70728	2	SCREW, PHILIPS PAN HD. MACH.-M3-.5 X 5 LG
19	57821	2	CAPSCR., HEX HD.-M8-1.25 X 40 LG	44	43182	2	LOCK WASHER-M3
20	59637	2	SCREW, TAPTITE 3/8"-16 X .75 LG	45	70185	1	FILTER, OIL
21	21544	1	MOTOR, STARTER-12VOLT	46	A7629	1	ENGINE, LONG BLOCK-GN410VSRV
22	40976	2	SOCKET HD. CAPSCR., M8-1.25 X 20 LG	47	82774	1	KEY, WOODRUFF 4 X 19 DIA.
23	25034	1	PLUG, BUTTON 1-1/16"	48	C2308	1	COVER, CARB.
24	A8875	1	ASSEMBLY, DIPSTICK & CAP				
25	A7299	1	OIL DRAIN/DIPSTICK TUBE				

Appendix 4 – Exploded Views and Parts Lists

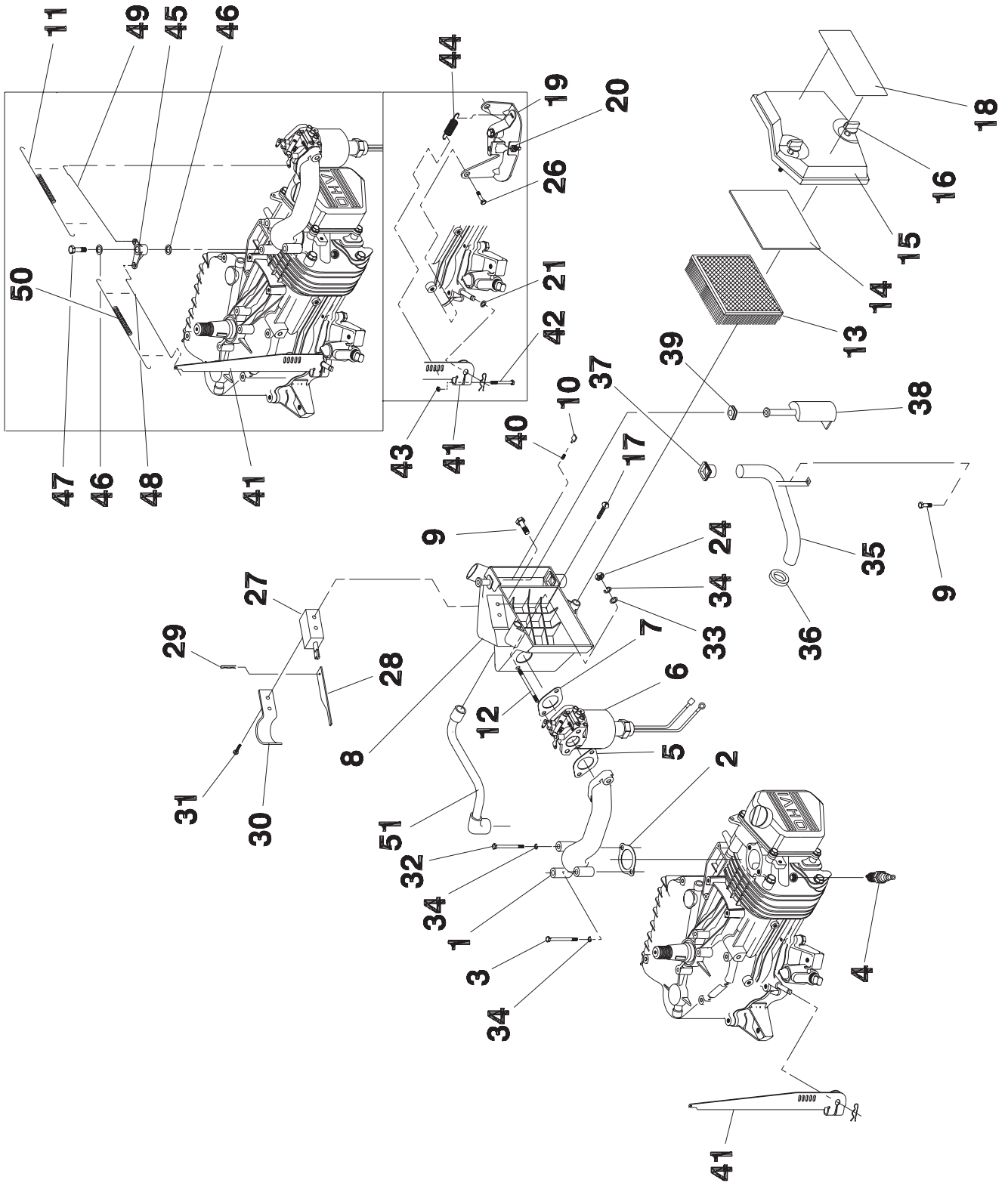
PRIMEPACT 50 Recreational Vehicle Generator GN-410 Engine (Model 02010-0 and 04164-0) – Drawing No. A7894-D



ITEM	PART NO.	QTY.	DESCRIPTION	ITEM	PART NO.	QTY.	DESCRIPTION
1	21533	1	PISTON RING SET	32	A5776	1	PRESSURE RELIEF BALL
3	71978	1	CONNECTING ROD WITH CAP & BOLT	33	A7308	1	GOVERNOR SPOOL
4	71980	1	PISTON PIN	34	78645	1	GOVERNOR RETAINER (C-RING)
5	71983	2	PISTON PIN RETAINER	35	78691	1	COVER, OIL PRESSURE RELIEF
6	21713B	1	CYLINDER HEAD GASKET	36	74908	1	M5-0.8 X 10MM TAPTITE
7	A1442	8	FLANGED HEX HD. CAP-SCREW M8-1.25 X 42	37	A8930	1	GOVERNOR GEAR ASSEMBLY
8	21742	4	M10 1.5 X 105MM HHFL	38	A5771	1	OIL PRESSURE SPRING
9	96699	1	PISTON	39	B2104	1	SPRING WASHER
10	76701	1	CRANKCASE GASKET	40	89280D	1	OIL SUMP ASSEMBLY
11	45756	2	M6-1.0 X 10 TAPTITE (THD. FORMING)	42	78658	1	GOVERNOR ARM "R" PIN
12	80308	2	BREATHER GASKET	43	78659	2	THRUST WASHER
13	80309	1	BREATHER COVER	46	A7628	1	GOVERNOR ARM RC45
14	80338	1	OIL BREATHER SEPARATOR	48	C3396C	1	CRANKCASE SUB ASSEMBLY
15	26925	1	PIPE PLUG-3/8"	49	84430	1	BALANCER
16	83897	2	TAPPET, SOLID	50	86002	1	OUTER GEROTOR
17	72694	2	PIVOT BALL STUD	51	86026	1	INNER GEROTOR
18	72696	2	JAM NUT (ROCKER ARM)	52	88396B	2	PUSH ROD
19	78672	1	SEAL, VALVE STEM	53	90416A	1	CRANKSHAFT ASSEMBLY
20	78694	1	PUSH ROD GUIDE PLATE	54	90747	1	BREATHER VALVE ASSEMBLY
21	83907	2	ROCKER ARM	55	C3150	1	ROCKER COVER GASKET
22	21714	1	CYLINDER HEAD W/VALVE SEATS AND GUIDES	57	92362	1	ROCKER COVER W/FILL
23	86514	2	VALVE SPRING RETAINER	58	79246	4	M6-1.0 X 16MM HEX HEAD. SCREW. AND LOCK WASHER
24	86515	4	VALVE SPRING KEEPER	59	83921	1	BEARING TUBE SHAFT
25	86516	1	EXHAUST VALVE	60	77158	1	OIL SCREEN PICKUP ASSEMBLY
26	86517	1	INTAKE VALVE	63	76329	1	OIL FILL PLUG
27	89673	2	WASHER, VALVE SPRING	64	86254	1	"O" RING 17.8 I.D. X 2.4 THICK
28	91308	2	VALVE SPRING	65	93064	1	OIL FILL CAP ASSEMBLY
29	A9877	1	CAMSHAFT ASSEMBLY				
30	72655	2	CRANKSHAFT 35 I.D. SEAL				
31	76361	1	THRUST WASHER				

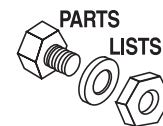
Appendix 4 – Exploded Views and Parts Lists

**PRIMEPACT 50 Recreational Vehicle Generator
Engine Accessories (Model 02010-0) – Drawing No. A8923-A**



Appendix 4 – Exploded Views and Parts Lists

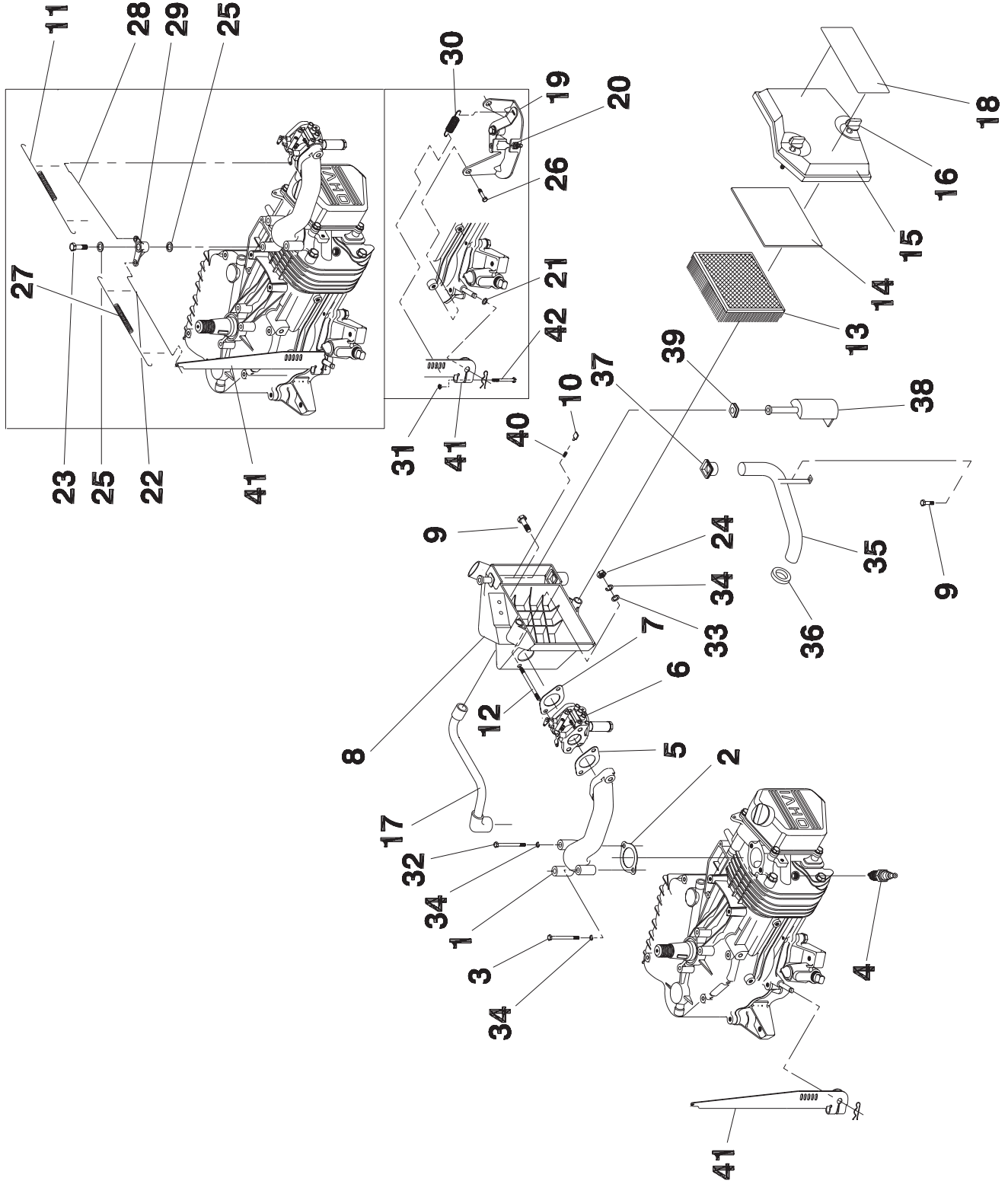
PRIMEPACT 50 Recreational Vehicle Generator Engine Accessories (Model 02010-0) – Drawing No. A8923-A



ITEM	PART NO.	QTY.	DESCRIPTION	ITEM	PART NO.	QTY.	DESCRIPTION
1	A6532	1	MANIFOLD, INTAKE	30	89473	1	ASSEMBLY, CHOKE HEATER
2	91039	1	GASKET, MANIFOLD/HEAD	31	A7094	2	SCREW, PHILLIPS PAN HD. MACH. #4-40 X .25" LG.
3	51753	1	HHCS-M6-1.0 X 40 LG.	32	20753	1	HHCS-M6-1.0 X 60 LG.
4	72347	1	SPARK PLUG, CHAMP	33	22473	2	M6 FLAT WASHER
5	89228	1	GASKET, CARB/MANIFOLD	34	22097	4	M6 LOCK WASHER
6	A6562	1	CARBURETOR	35	A6582	1	TUBE, WINTER INLET
7	90970	1	GASKET, CARB/AIR FILTER	36	A6503	1	GROMMET 1/16"-1-1/2"
8	A6564	1	BASE, AIR FILTER	37	A6569	1	GROMMET, AIR IN/OUT
9	56893	3	CRIMPTITE #10-24 X 1/2" LG.	38	A6565	1	VALVE, WINTER/SUMMER
10	A6566	1	DETENT	39	A6568	1	GROMMET, WINTER/SUMMER VALVE
11	A6780	1	SPRING, A/L BELLCRANK- CARB.	40	A6567	1	SPRING, DETENT
12	96290	2	STUD, CARB. MOUNT 90 LG.	41	90968	1	LEVER, GOVERNOR ARM
13	73111	1	FILTER, AIR	42	83532	1	BOLT, HEX HD. WASHER/LOCK WASHER-M6-1.0 X 30 LG.
14	81646	1	PRE-CLEANER, AIR FILTER	43	86681	1	NUT, GOVERNOR LEVER
15	A6563	1	COVER, AIR FILTER	44	A8222	1	SPRING, GOVERNOR
16	C3633	2	KNOB, AIR CLEANER	45	A6753	1	BELLCRANK, GOV. RODS
17	A7095	2	RHMS-#4-40 X 5/16	46	92586	2	WASHER, FELT
18	C2332	1	DECAL, AIRBOX QP55	47	91161	1	BOLT, SHOULDER, M6 X 15 LG.
19	92164	1	ASSEMBLY, GOV. SPRING ADI BRACKET	48	A6913	1	ROD, LINKAGE GOV. LEVER- BELLCRANK
20	83503	1	NUT, LOCKING M5-0.8	49	A6785	1	ROD, LINKAGE BELLCRANK- CARB.
21	A7029	1	NYLON WASHER, .31 X .26 X .13	50	A6778	1	SPRING, A/L GOV. LEVER- BELLCRANK
24	49813	2	NUT, M6-1.0	51	A6581	1	BREATHER, TUBE
26	83512	2	TAPTITE-M8-1.25 X 16 LG.				
27	A6239	1	ASSEMBLY, CHOKE SOLENOID				
28	A6584	1	LINKAGE, CHOKE				
29	36544	1	PIN, COTTER, 3/32" X 1/2"				

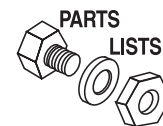
Appendix 4 – Exploded Views and Parts Lists

**PRIMEPACT 50 Recreational Vehicle Generator
Engine Accessories (Model 04164-0) – Drawing No. C3880-**



Appendix 4 – Exploded Views and Parts Lists

PRIMEPACT 50 Recreational Vehicle Generator Engine Accessories (Model 04164-0) – Drawing No. C3880-



ITEM	PART NO.	QTY.	DESCRIPTION	ITEM	PART NO.	QTY.	DESCRIPTION
1	A6532	1	MANIFOLD, INTAKE	23	91161	1	BOLT, SHOULDER, M6 X 15 LG.
2	91039	1	GASKET, MANIFOLD/HEAD	24	49813	2	NUT, M6-1.0
3	51753	1	HHCS-M6-1.0 X 40 LG.	25	92586	2	WASHER, FELT
4	72347	1	SPARK PLUG, CHAMP	26	83512	2	TAPTITE-M8-1.25 X 16 LG.
5	89228	1	GASKET, CARB/MANIFOLD	27	A6778	1	SPRING, A/L GOV. LEVER- BELLCRANK
6	A7336A	1	CARBURETOR, GN 410 L/P	28	A6785	1	ROD, LINKAGE BELLCRANK- CARB.
7	90970	1	GASKET, CARB/AIR FILTER	29	A6753	1	BELLCRANK, GOV. RODS
8	A6564	1	BASE, AIR FILTER	30	A8222	1	SPRING, GOVERNOR
9	56893	3	CRIMPTITE #10-24 X 1/2" LG.	31	86681	1	NUT, GOVERNOR LEVER
10	A6566	1	DETENT	32	20753	1	HHCS-M6-1.0 X 60 LG.
11	A6780	1	SPRING, A/L BELLCRANK- CARB.	33	22473	2	M6 FLAT WASHER
12	96290	2	STUD, CARB. MOUNT 90 LG.	34	22097	4	M6 LOCK WASHER
13	73111	1	FILTER, AIR	35	A6582	1	TUBE, WINTER INLET
14	81646	1	PRE-CLEANER, AIR FILTER	36	A6503	1	GROMMET 1/16"-1-1/2"
15	A6563	1	COVER, AIR FILTER	37	A6569	1	GROMMET, AIR IN/OUT
16	C3633	2	KNOB, AIR CLEANER	38	A6565	1	VALVE, WINTER/SUMMER
17	A6581	1	BREATHER, TUBE	39	A6568	1	GROMMET, WINTER/SUMMER VALVE
18	C2332	1	DECAL, AIRBOX QP55	40	A6567	1	SPRING, DETENT
19	92164	1	ASSEMBLY, GOV. SPRING ADI BRACKET	41	90968	1	LEVER, GOVERNOR ARM
20	83503	1	NUT, LOCKING M5-0.8	42	83532	1	BOLT, HEX HD. WASHER/LOCK WASHER-M6-1.0 X 30 LG.
21	A7029	1	NYLON WASHER, .31 X .26 X .13				
22	A6913	1	ROD, LINKAGE GOV. LEVER- BELLCRANK				