

Automatic Transfer Switch

Owner's Manual

ATS Service Entrance
HS Type Transfer Switch

Models: 005036-0, 100 Amp, 250 Volts
and 004945-1, 200 Amp, 250 Volts



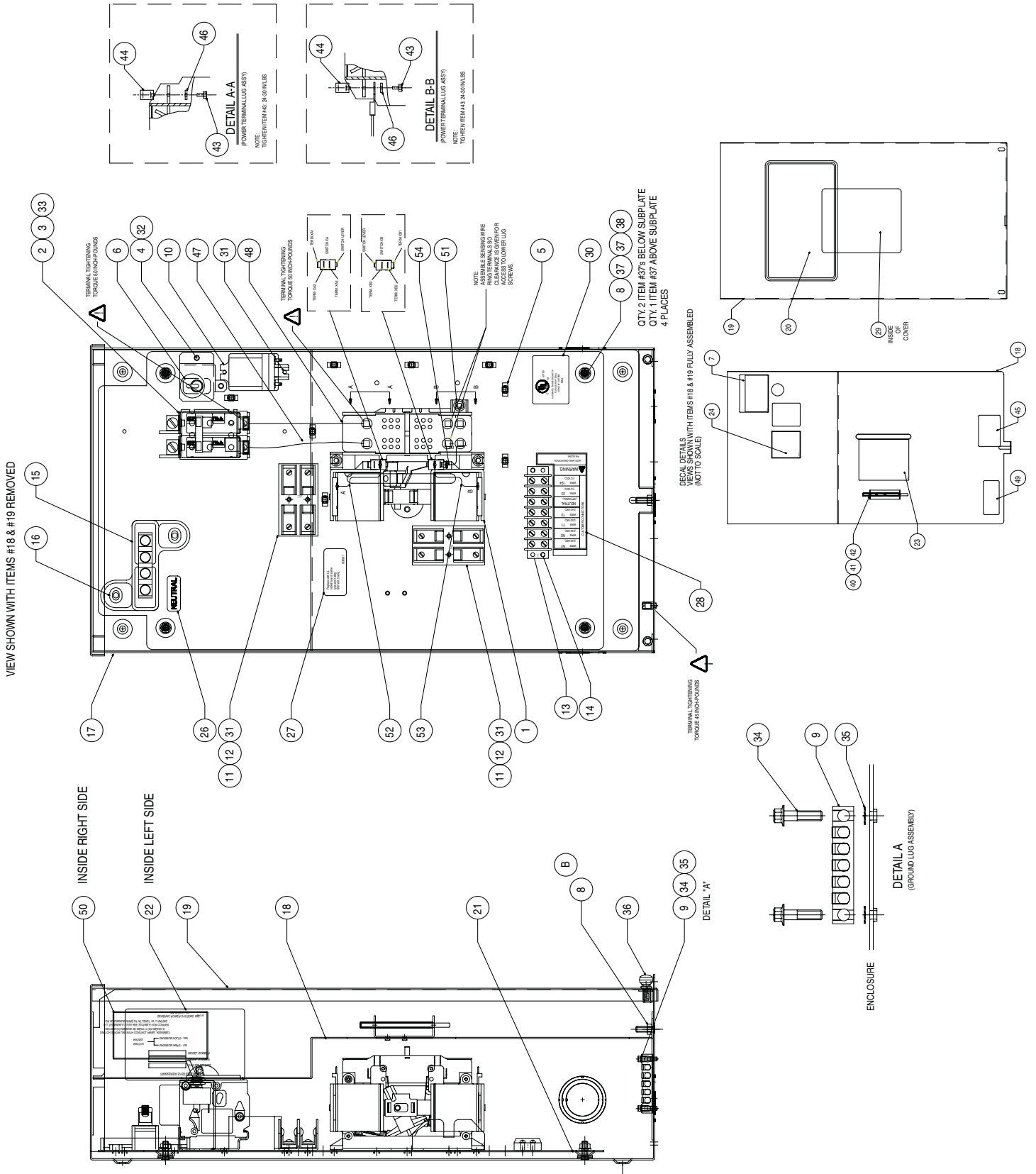
This manual should remain with the unit.



Section 6 – Exploded Views and Parts List

ATS "HS" Type Transfer Switch

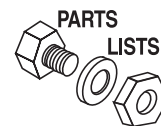
100A Transfer Switch Assembly – Drawing No. 0F0466\$-D



Section 6 – Exploded Views and Parts List

ATS "HS" Type Transfer Switch

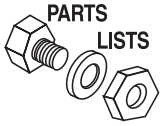
100A Transfer Switch Assembly – Drawing No. 0F0466\$-D



ITEM	PART NO.	QTY.	DESCRIPTION
1	0C2237	1	TRANSFER SW-HSB 100A 2P 250V
2	0E7886H	1	CB 0100A 2P 240V S BQ2 LB
3	0E7890	1	BRKT CB MTG BACK
4	0E9906	1	BRACKET, DISCONNECT SWITCH 100A
5	063378	8	HOLDER, CABLE TIE
6	0D3728	1	SWITCH TOG SPST 15A @ 125V
7	0E9999	1	DECAL SERVICE DISCONNECT SWITCH
8	049813	4	NUT HEX M6 X 1.0 G8 YEL CHR
9	0E6523	1	GROUND BAR (5)4-14 AWG CONN
10 ***	063617	1	RELAY PNL 12VDC DPDT 10A@240VA
11 ***	0D2806	2	FUSEBLOCK 30A 600V 2POS W/SQ
12	073590A	4	FUSE 5A X BUSS
13 ***	047822	1	BLOCK TERM 20A 7 X 6 X 1100V
14	0A1661	2	RIVET POP .156 X .675 AL
15	0C4449	1	ASS'Y-NTRL BL 150-200A
16	090388	2	SCREW HHTT M6-1.0 X 12 ZINC
17	0E1473	1	WELDMENT TRANSFER SWITCH BOX
18	0E9907	1	COVER INSIDE XFER SWITCH BOX
19	0E1477	1	COVER TRANSFER SWITCH BOX
20	0F0668	1	DECALTRANSFER SWITCH
21	0E3070	1	SUBPLT XFER SW HSB
22	0E9734	REF	DECAL SWITCH RATING
23	0E3484	1	DECAL WARN MANUAL OPER HANDLE
24	0E3485	1	DECAL SERVICE DISCONNECT
25	067210A	1	DECAL GROUND LUG (NOT SHOWN)
26	0A9457	1	DECAL NEUTRAL
27	0D3587	1	DECAL FUSE REPLACEMENT
28	0A2595	1	DECAL TERMINAL STRIP
29	0F0776	1	DECAL TEST SEQ. 2P TS HS 3R
30	081221	1	DECAL-UL LIST HSB
31	045764	6	SCREW HHTT M4-0.7 X 8 BP
32	074908	2	SCREW HHTT M5-0.8 X 10 BP
33	066849B	2	SCREW HHTT M5-0.8 X 8 BP
34	0C3992	2	SCREW HHTT M4-0.7 X 16 BP
35	026579	2	WASHER SHAKEPROOF EXT #8 STEEL
36	0E7213	2	SCREW THUMB 1/4-20 X 1/2 W/SHLD
37	022473	8	WASHER FLAT 1/4-M6 ZINC
38	022097	4	WASHER LOCK M6-1/4
39	0E9987	1	WIRE HARNESS HSB (NOT SHOWN)
40	0E6193	1	BRACKET ARM EXTENDER
41	064526	2	SCREW HWHS #6-25 X 3/8 ZNC
42 **	0E6155	1	ARM EXTENDER PIN
43	036933	6	SCREW PPHM #10-32 X 3/8
44	077033	6	LUG SLDLSS 1/0-#14X9/16 AL/CU
45	0C8308	1	DECAL TERMINAL SHOCK HAZARD
46	022152	6	WASHER LOCK #10
47	0912970085	1	WIRE ASSY 2AWG 100A 2-P T/S N1A
48	0912970086	1	WIRE ASSY 2AWG 100A 2-P T/S N2A
49	095282	1	DECAL LIVE-CIRCUIT
50	0F2710	1	DECAL XFER SWITCH DATA SE 100A
51	066849	4	SCREW HHTT M5-0.8 X 16
52	0E6303	1	WIRE – A
53	0E6303A	1	WIRE – B
54	0E6303C	1	WIRE – E1

*** SUPPLIED WITH WIRE HARNESS ITEM #39

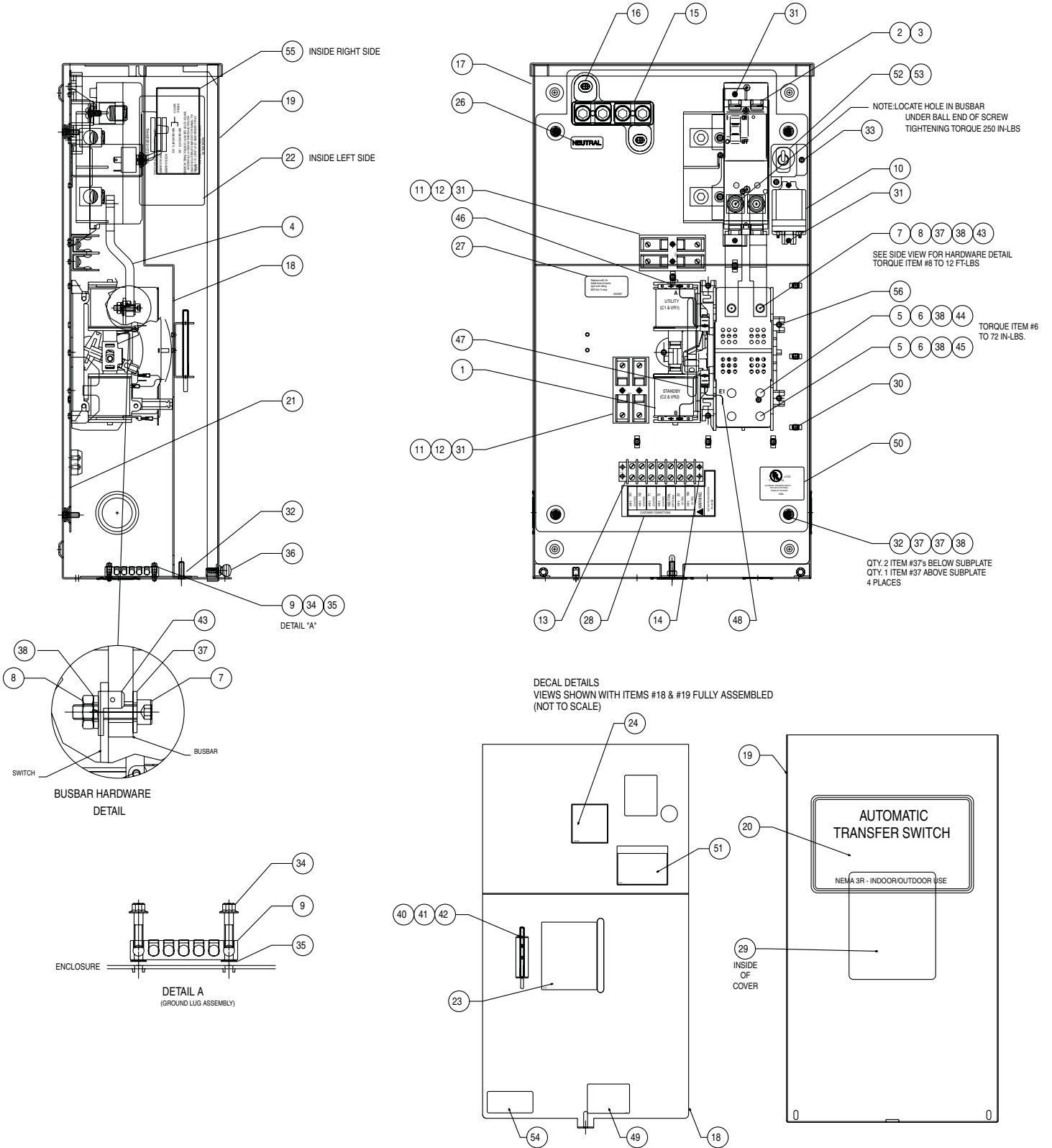
** SUPPLIED WITH TRANSFER SWITCH (ITEM #1)



Section 6 – Exploded Views and Parts List

ATS "HS" Type Transfer Switch

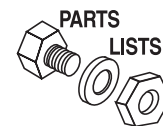
200A Transfer Switch Assembly – Drawing No. 0E9801\$-F



Section 6 – Exploded Views and Parts List

ATS "HS" Type Transfer Switch

200A Transfer Switch Assembly – Drawing No. 0E9801\$-F



ITEM	PART NO.	QTY.	DESCRIPTION
1	0D9618	1	TRANSFER SW-HSB 200A 2P 250V
2	0E3628	1	CIRCUIT BREAKER 0200A 2P 120/240V S QN
3	0E3664	1	BASE QN CIRCUIT BREAKER
4	0E3553	2	BUSBAR 200A HSB XFER SW
5	0E3375	4	LUG SLDLSS 250-#6 AL/CU
6	0F1252	4	SCREW BHSC 1/4-20 X 3/8
7	036656	2	SCREW SHC 1/4-20 X 1 G8.8 NZ
8	022127	2	NUT HEX 1/4-20 STEEL
9	0E6523	1	GROUND BAR (5)4-14 AWG CONN
10	063617	1	RELAY PNL 12VDC DPDT 10A@240VA
11	0D2806	2	FUSEBLOCK 30A 600V 2POS W/SQ
12	073590A	4	FUSE 5A X BUSS
13	047822	1	BLOCK TERM 20A 7 X 6 X 1100V
14	0A1661	2	RIVET POP .156 X .675 AL
15	0C4449A	1	ASS'Y-NTRL BL150-200A
16	090388	2	SCREW HHTT M6-1.0 X 12 ZINC
17	0E1473	1	WELDMENT TRANSFER SWITCH BOX
18	0E9989	1	COVER INSIDE XFER SWITCH BOX
19	0E1477	1	COVER TRANSFER SWITCH BOX
20	0F0668	1	DECALTRANSFER SWITCH
21	0E3070	1	SUBPLT XFER SW HSB
22	0E3477	REF	DECAL SWITCH RATING
23	0E3484	1	DECAL WARN MANUAL OPER HANDLE
24	0E3485	1	DECAL SERVICE DISCONNECT
25	067210A	1	DECAL GROUND LUG (NOT SHOWN)
26	0A9457	1	DECAL NEUTRAL
27	0D3587	1	DECAL FUSE REPLACEMENT
28	0A2595	1	DECAL TERMINAL STRIP
29	0E7109	1	DECAL TEST SEQ.2P TS HS 3R
30	063378	8	HOLDER CABLE TIE
31	045764	8	SCREW HHTT M4-0.7 X 8 BP
32	049813	5	NUT HEX M6 X 1.0 G8 YEL CHR
33	074908	2	SCREW HHTT M5-0.8 X 10 BP
34	0C3992	2	SCREW HHTT M4-0.7 X 16 BP
35	026579	2	WASHER SHAKEPROOF EXT #8 STEEL
36	0E7213	2	SCREW THUMB 1/4-20 X 1/2 W/SHLD
37	022473	14	WASHER FLAT 1/4-M6 ZINC
38	022097	10	WASHER LOCK M6-1/4
39	0E9987	1	WIRE HARNESS HSB (NOT SHOWN)
40	0E6193	1	BRACKET ARM EXTENDER
41	064526	2	SCREW HWHS #6-25 X 3/8
42 *	0E6155	1	ARM EXTENDER PIN
43 *	0E6032	2	90 DEGREE UP SPADE CONNECTOR
44 *	0E6033	2	90 DEGREE DN SPADE CONNECTOR
45 *	0E6034	2	STRAIGHT SPADE CONNECTOR
46	0E6303	1	WIRE A
47	0E6303A	1	WIRE B
48	0E6303B	1	WIRE E1
49	0C8308	1	DECAL TERMINAL SHOCK HAZARD
50	081221	1	DECAL-UL LIST HSB
51	0E9999	1	DECAL-SERVICE DISCONNECT SWITCH
52	0E9988	1	BRACKET SERVICE SWITCH
53	0D3728	1	TOBBLE SWITCH, SERVICE
54	095282	1	DECAL LIVE-CIRCUIT
55	0F2712	1	DECAL XFER SWITCH DATA SE 200A
56	066849	5	SCREW HHTT M5-0.8 X 16

* SUPPLIED WITH TRANSFER SWITCH ITEM #1