

Automatic Transfer Switch

Owner's Manual

ATS "HS" Type

**Models: 004635-3
(200 Amp, 250 Volts)
and 004678-2
(100 Amp, 250 Volts)**

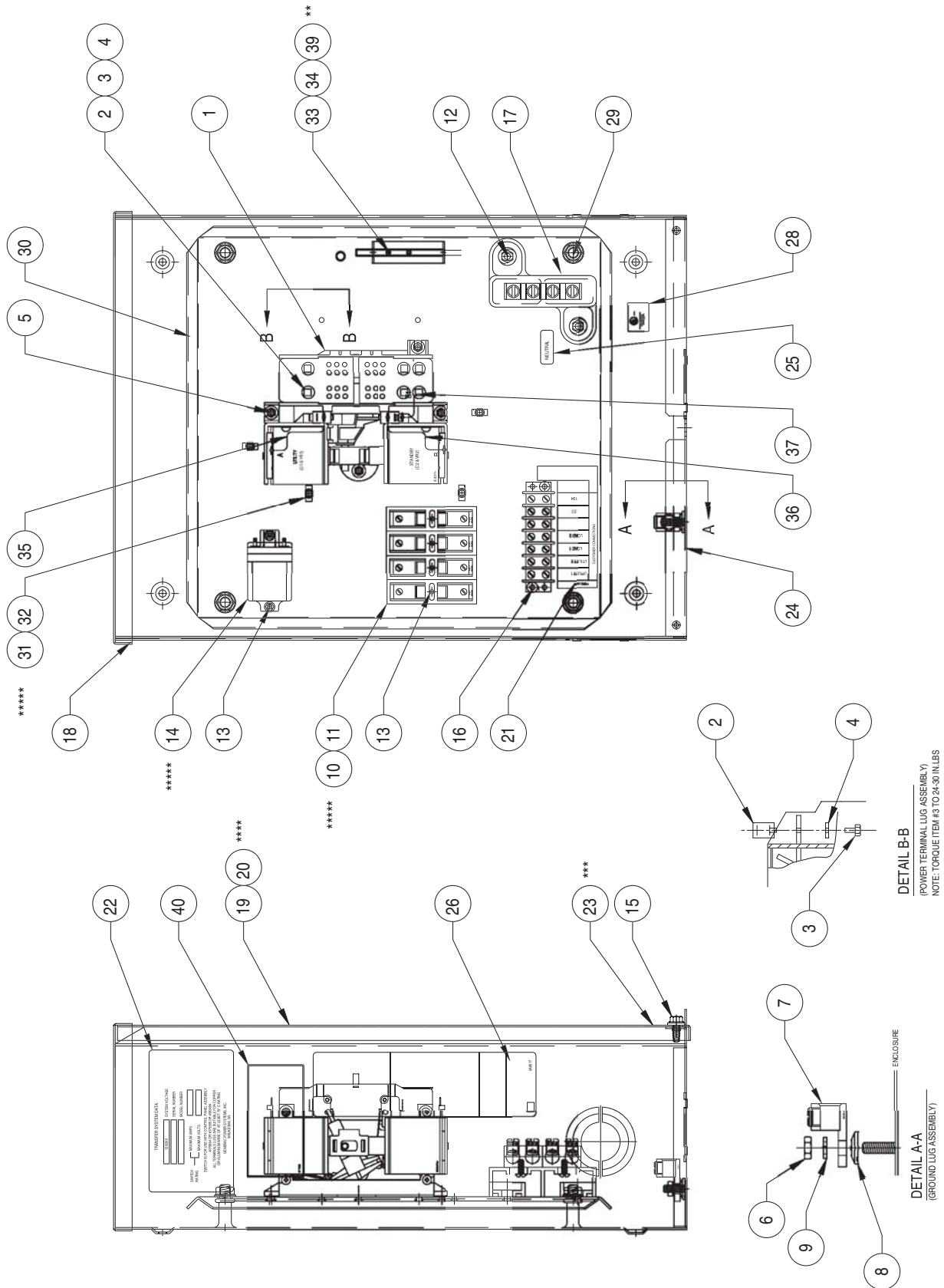


This manual should remain with the unit.

Section 7 – Exploded Views and Parts List

ATS "HS" Type Transfer Switch

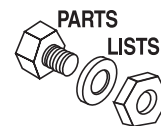
100A Transfer Switch Assembly – Drawing No. 0E8403\$-F



Section 7 – Exploded Views and Parts List

ATS "HS" Type Transfer Switch

100A Transfer Switch Assembly – Drawing No. 0E8403\$-F



ITEM	PART NO.	QTY.	DESCRIPTION
1	0C2237	1	TR SW-HSB 100A 2P 250V
2	077033	6	LUG SLDLSS 1/0-#14X9/16 AL/CU
3	036932	6	SCREW PPHM #10-32 X 1/4
4	022152	6	WASHER LOCK #10
5	074908	4	SCREW HHTT M5-0.8 X 10 BP
6	045771	1	NUT HEX M8-1.25 G8 YEL CHR
7	062684	1	LUG SLDLSS 2/0-#12 X 11/32 CU
8	0C3168	1	WASHER LOCK SPECIAL 5/16
9	022129	1	WASHER LOCK M8-5/16
10	073590A	4	FUSE 5A X BUSS
11	073591	4	FUSE HOLDER
12	090388	2	SCREW HHTT M6-1.0 X 12 ZINC
13	0A1495	6	SCREW HHTT M4-0.7 X 10 BP
14	063617	1	RELAY PNL 12VDC DPDT 10A@240VA
15	0C2454	2	SCREW TH-FRM M6-1 X 16 N WA ZJS
16	0A1661	2	RIVET POP .156 X .675 AL
17	0C4449	1	ASSY NEUTRAL BLOCK 100A
18	0E6057	1	WELDMENT XFER SW BOX HSB
19	0E6056	1	COVER TRANSFER SWITCH BOX HSB
20****	0F0668	1	DECAL TRANSFER SWITCH
21	0A2595	1	DECAL TERMINAL STRIP
22	0E8443	1	DECAL SWITCH RATING
23***	095282	1	DECAL-LIVE CIRCUIT
24	067210A	1	DECAL GROUND LUG
25	0A9457	1	DECAL NEUTRAL
26	0A9517	1	DECAL MANUAL 5A FUSE
27*	077036D	1	DECAL TEST SEQUENCE 3R
28	081221	1	DECAL-UL LIST HSB
29	064101	4	NUT HEX FL WHIZ 3/8-16
30	0E6055	1	SUBPLT TRANSFER SWITCH HSB
31*****	063378	4	HOLDER CABLE TIE
32*****	028739	4	TIE WRAP UL 3.9" X .10" NATL
33	0E6193	1	BRACKET, ARM EXTENDER
34**	0E6155	0	ARM EXTENDER PIN
35	0E6303	1	WIRE A
36	0E6303A	1	WIRE B
37	0E6303C	1	WIRE E1
38	0E6094	1	WIRE HARNESS 100/200A 2P HS (NOT SHOWN)
39	064526	2	SCREW HWHS #6-25 X 3/8 ZNC
40	0F2088	1	DECAL TRANSFER SWITCH DATA 100

* CENTER DECAL ON INSIDE OF THE COVER (ITEM #19)

** SUPPLIED WITH TRANSFER SWITCH ITEM #1.

*** PLACE DECAL ON OUTSIDE OF COVER, LOWER RIGHT CORNER.

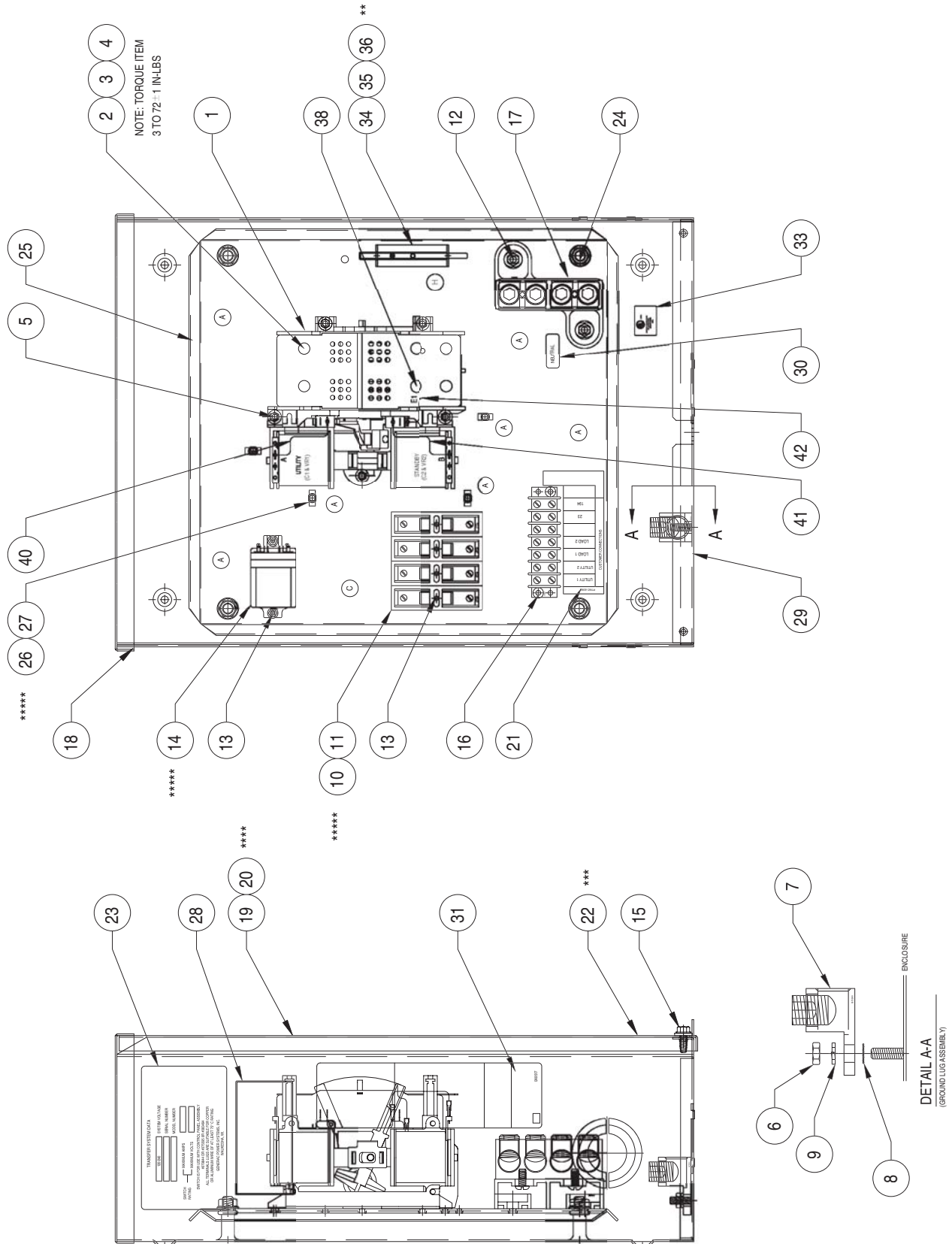
**** NOT SHOWN ON THIS ASSEMBLY, CENTER DECAL ON FRONT OF COVER, 7" FROM TOP OF ENCLOSURE.

***** SUPPLIED WITH HARNESS (P/N 0E6094).

Section 7 – Exploded Views and Parts List

ATS "HS" Type Transfer Switch

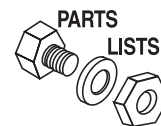
200A Transfer Switch Assembly – Drawing No. 0E5782\$-J



Section 7 – Exploded Views and Parts List

ATS "HS" Type Transfer Switch

200A Transfer Switch Assembly – Drawing No. 0E5782\$-J



ITEM	PART NO.	QTY.	DESCRIPTION
1	0D9618	1	TR SW-HSB 200A 2P 250V
2	0E3375	6	LUG SLDLSS 250-#6 AL/CU
3	0F1252	6	SCREW BHSC 1/4-20 X 3/8
4	022097	6	WASHER LOCK M6-1/4
5	066849	5	SCREW HHTT M5-0.8 X 16 BP
6	045771	1	NUT HEX M8-1.25 G8 YEL CHR
7	057329	1	LUG SLDLSS 350-#6 X 13/32 AL/CU
8	027482	1	WASHER SHAKEPROOF EXT 5/16 STL
9	022129	1	WASHER LOCK M8-5/16
10	073590A	4	FUSE 5A X BUSS
11*****	073591	4	FUSE HOLDER
12	090388	2	SCREW HHTT M6-1.0 X 12 ZINC
13	0A1495	6	SCREW HHTT M4-0.7 X 10 BP
14*****	063617	1	RELAY PNL 12VDC DPDT 10A@240VA
15	0C2454	2	SCREW TH-FRM M6-1 X 16 N WA ZJS
16	0A1661	2	RIVET POP .156 X .675 AL
17	0C4449A	1	ASS'Y-NTRL BL150-200A
18	0E6057	1	WELDMENT XFER SW BOX HSB
19	0E6056	1	COVER TRANSFER SWITCH BOX HSB
20****	0F0668	1	DECAL TRANSFER SWITCH
21	0A2595	1	DECAL TERMINAL STRIP
22***	095282	1	DECAL-LIVE CIRCUIT
23	0E8443	1	DECAL SWITCH RATING
24	064101	4	NUT LOCK FL 3/8-16
25	0E6055	1	SUBPLT TRANSFER SWITCH HSB
26*****	063378	5	HOLDER CABLE TIE
27*****	028739	5	TIE WRAP UL 3.9" X .10" NATL
28	0F2516	1	DECAL TRANSFER SWITCH DATA 200
29	067210A	1	DECAL GROUND LUG
30	0A9457	1	DECAL NEUTRAL
31	0A9517	1	DECAL MANUAL 5A FUSE
32 *	0E6190	1	DECAL TEST SEQUENCE 2P TS 3R
33	081221	1	DECAL-UL LIST HSB
34	0E6193	1	BRACKET ARM EXTENDER
35	064526	2	SCREW HWHS #6-25 X 3/8 ZNC
36 **	0E6155	1	ARM EXTENDER PIN
37	0E6094	1	HARN 100/200A 2P HS
38 **	0E6033	2	90 DEGREE DN SPADE CONNECTOR
40	0E6303	1	WIRE A
41	0E6303A	1	WIRE B
42	0E6303B	1	WIRE-E1

* CENTER DECAL ON INSIDE OF THE COVER (ITEM #19)

** SUPPLIED WITH TRANSFER SWITCH ITEM #1.

*** PLACE DECAL ON OUTSIDE OF COVER, LOWER RIGHT CORNER.

**** NOT SHOWN ON THIS ASSEMBLY, CENTER DECAL ON FRONT OF COVER, 7" FROM TOP OF ENCLOSURE.

***** SUPPLIED WITH HARNESS (P/N 0E6094)