

GENERAC®

POWER SYSTEMS, INC.

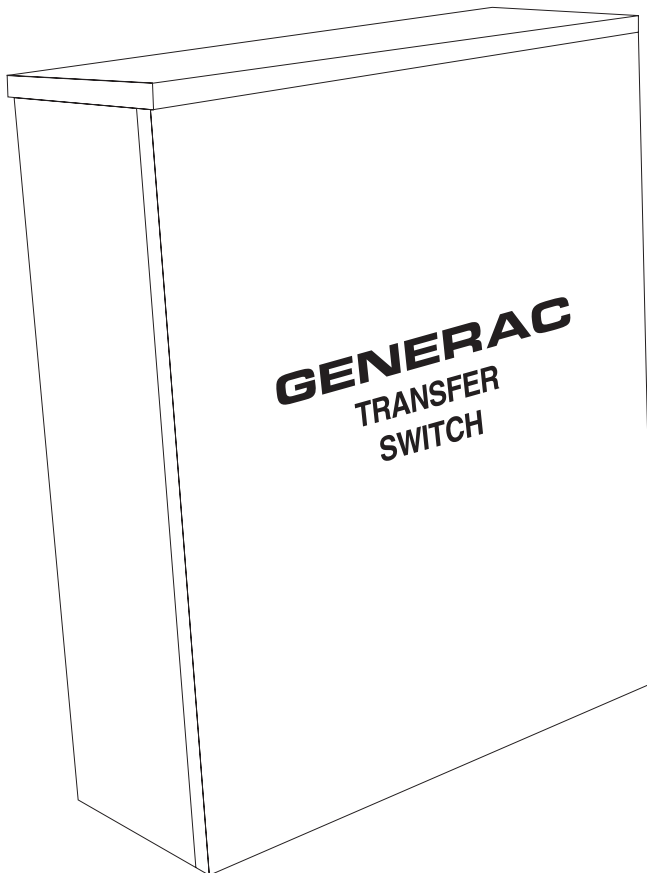
Owner's Manual

GTS "W" Type

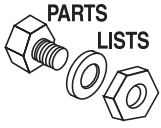
**Automatic
Transfer Switch**

200 Amp, 250 Volts

Model Nos. 004635-1
004635-2



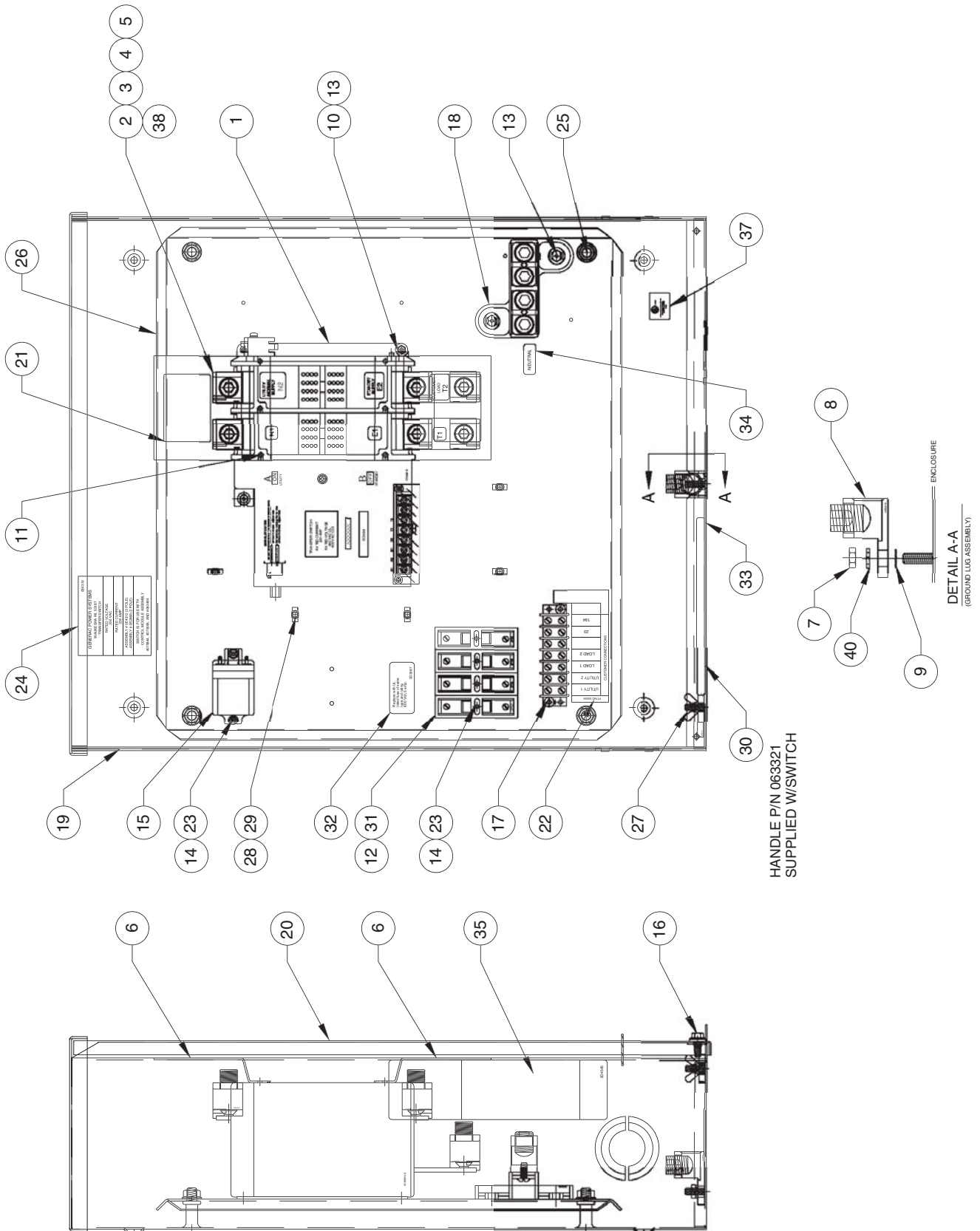
This manual should remain with the unit.



Section 6 – Exploded Views and Parts List

Generac GTS "W" Type Transfer Switch

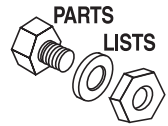
200 A, 2Pole Switch Assembly – Drawing No. 0E28685-D



Section 6 – Exploded Views and Parts List

Generac GTS "W" Type Transfer Switch

200 A, 2Pole Switch Assembly – Drawing No. 0E2868\$-D



ITEM	PART NO.	QTY.	DESCRIPTION
1	0C8884	1	XFER SW-W 200A600V2P
2	0A9949	6	LUG SLDLSS 400-#4X1/4-20 CU7AL
3	0C4896	6	SCREW FHM M8-1.25 X 20MM CR
4	067989	6	NUT LOCK FL M8-1.25 YEL CHR
5	026902	6	SCREW HHTT #8-32 X 1/4 CZ
6	0C7907H	2	COVER LUG 2P 150/200AMP
7	022127	1	NUT HEX 1/4-20 STEEL
8	057329	1	LUG SLDLSS 350-#6X13/32 AL/CU
9	027482	1	WASHER SHAKEPROOF EXT 5/16 STL
10	022097	3	WASHER LOCK M6-1/4
11	0C8275	4	SCREW PPHM DSEMS M4-7 X 10 ZNC
12	073591	4	FUSE HOLDER
13	090388	5	SCREW HHTT M6-1.0 X 12 ZINC
14	0A1495	6	SCREW HHTT M4-0.7 X 10 BP
15	063617	1	RELAY PNL 12VDC DPDT 10A@240VA
16	0C2454	2	SCREW TH-FRM M6-1X16 N WA ZJS
17	0A1661	2	RIVET POP .156 X .675 AL
18	0C4449A	1	ASS'Y-NTRL BL150-200A
19	0E2865	1	WELDMENT, TRANSFER SWITCH BOX
20	0D3718	1	COVER, TRANSFER SWITCH BOX
21	0C8308	2	DECAL TERMINAL SHOCK HAZARD
22	0A2595	1	DECAL TERMINAL STRIP
23	022264	6	WASHER LOCK #8-M4
24	0E4313	1	DECAL, SWITCH RATING
25	064101	4	NUT LOCK FL 3/8-16
26	0E2866	1	SUBPLT 200A TS 3R
27	025870	1	NUT WING 1/4-20
28	063378	5	HOLDER CABLE TIE
29	064761	5	TIE WRAP UL 5.6 X .10 NATL
30	063321	1	HANDLE XFER SWITCH 1-400A
31	073590A	4	FUSE 5A X BUSS
32	0D3587	1	DECAL, FUSE REPLACEMENT
33	067210A	1	DECAL GROUND LUG
34	0A9457	1	DECAL NEUTRAL
35	0D4545	1	DECAL, MANUAL OPERATION
36*	0E4307	1	DECAL, TEST SEQUENCE 2P TS 3R
37	081221	1	DECAL-UL LIST HSB
38**	0E4358	2	DECAL, LUG TORQUE INFO
39***	0E5567	1	DECAL, TRANSFER SWITCH
40	022129	1	WASHER LOCK M8-5/16

* CENTER DECAL ON INSIDE OF THE COVER (ITEM #20)

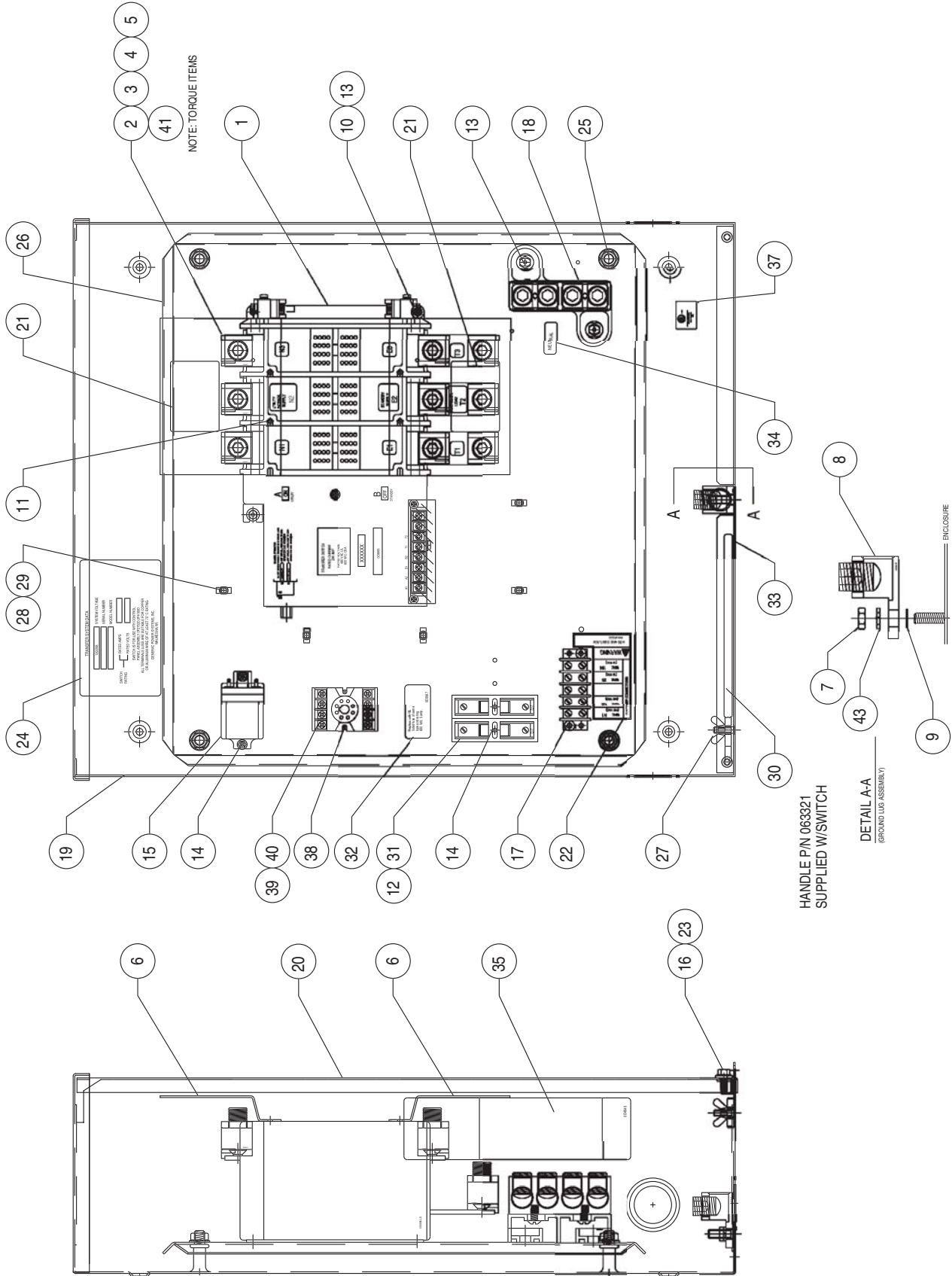
** INSTALL ACROSS E & N TERMINALS

***INSTALL ON FRONT OF THE COVER (ITEM #20)

Section 6 – Exploded Views and Parts List

Generac GTS "W" Type Transfer Switch

200 A, 3-pole Switch Assembly – Drawing No. 0E4312\$-F



HANDLE P/N 063321
SUPPLIED W/ SWITCH

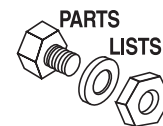
DETAIL A-A
(GROUND LUG ASSEMBLY)

ENCLOSURE

Section 6 – Exploded Views and Parts List

Generac GTS "W" Type Transfer Switch

200 A, 3-pole Switch Assembly – Drawing No. 0E43125-F



ITEM	PART NO.	QTY.	DESCRIPTION
1	0C8885	1	XFER SW-W 200A600V3P
2	0A9949	9	LUG SLDLSS 400-#4X1/4-20 CU7AL
3	0C4896	9	SCREW FHM M8-1.25 X 20MM CR
4	067989	9	NUT LOCK FL M8-1.25 YEL CHR
5	026902	7	SCREW HHTT #8-32 X 1/4 CZ
6	0C7907D	2	COVER LUG 3P 150/200AMP
7	045771	1	NUT HEX M8-1.25 G8 CLEAR ZINC
8	057329	1	LUG SLDLSS 350-#6X13/32 AL/CU
9	027482	1	WASHER SHAKEPROOF EXT 5/16 STL
10	022097	3	WASHER LOCK M6-1/4
11	0C8275	4	SCREW PPHM DSEMS M4-7 X 10 ZNC
12	073591	2	FUSE HOLDER
13	090388	5	SCREW HHTT M6-1.0 X 12 ZINC
14	0A1495	6	SCREW HHTT M4-0.7 X 10 BP
15	063617	1	RELAY PNL 12VDC DPDT 10A@240VA
16	047411	2	SCREW HHC M6-1.0 X 16 G8.8
17	0A1661	2	RIVET POP .156 X .675 AL
18	0C4449A	1	ASS'Y-NTRL BL150-200A
19	0E2865	1	WELDMENT, TRANSFER SWITCH BOX
20	0D3718	1	COVER, TRANSFER SWITCH BOX
21	0C8308	2	DECAL TERMINAL SHOCK HAZARD
22	0C2262	1	DECAL TERMINAL STRIP
23	0F6165	2	WASHER M6 NYLON
24	0F5569	1	DECAL, SWITCH RATING
25	064101	4	NUT LOCK FL 3/8-16
26	0E2866	1	SUBPLT 200A TS 3R
27	087680	1	NUT WING M6-1.0
28	063378	5	HOLDER CABLE TIE
29	064761	5	TIE WRAP UL 5.6 X .10 NATL
30	063321	1	HANDLE XFER SWITCH 1-400A
31	073590A	2	FUSE 5A X BUSS
32	0D3587	1	DECAL, FUSE REPLACEMENT
33	067210A	1	DECAL GROUND LUG
34	0A9457	1	DECAL NEUTRAL
35	0D4545	1	DECAL, MANUAL OPERATION
36*	0E4307	1	DECAL, TEST SEQUENCE 2P TS 3R
37	081221	1	DECAL-UL LIST HSB
38	0A2284	2	SCREW SWAGE 8-32 X 1/2 Z/YC
39	063306	1	3-PHASE POWER MONITR
40	066972	1	SOCKET RELAY OCTAL 8P 300V-10A
41**	0E4358	2	DECAL, LUG TORQUE INFO
42***	0F6521	1	DECAL TRANSFER SWITCH RTS
43	022129	1	WASHER LOCK M8-5/16

* CENTER DECAL ON INSIDE OF THE COVER (ITEM #20)

** INSTALL ACROSS E & N TERMINALS

***INSTALL ON FRONT OF THE COVER (ITEM #20)